



Unidad de Transacciones, S.A.

# Informe Estadístico Septiembre - 2009

Administrador del Mercado Mayorista  
de Electricidad de El Salvador  
Km. 12 1/2 Carretera al Puerto de La Libertad  
Nuevo Cuscatlán, Departamento de La Libertad  
Tel.: (503) 2247-7300 Fax: (503) 2247-7301  
[www.ut.com.sv](http://www.ut.com.sv)



|  | Pág. |
|--|------|
| Indice   | 2    |
| Referencias  | 3    |
| Resumen  | 4    |
| Inyecciones  | 5    |
| Comportamiento de la demanda de energía                    | 5    |
| ♦ Tasa de variación anual (promedio móvil 12 meses)        | 5    |
| ♦ Tasa de variación anual (promedio móvil 6 meses)         | 5    |
| ♦ Tasa de variación anual (promedio móvil 3 meses)         | 5    |
| Inyecciones por recurso                                    | 6    |
| Inyección nacional por participante de mercado             | 6    |
| Contratos de inyección                                     | 6    |
| Composición del mercado                                    | 7    |
| Mercado de Contratos de Retiro por participante de mercado | 7    |
| Mercado Regulador del Sistema por participante de mercado  | 7    |
| Comercio Internacional                                     | 8    |
| ♦ Importaciones por participante de mercado                | 8    |
| ♦ Exportaciones por participante de mercado                | 8    |
| ♦ Comercio Internacional por frontera                      | 8    |
| Evolución de los precios en el MRS                         | 9    |
| ♦ Precios SIS  | 10   |
| ♦ Precios EST  | 11   |
| ♦ Precios MRS  | 12   |
| ♦ Precios promedios  | 13   |
| Otras Estadísticas   | 14   |
| ♦ Energía No Servida, Pérdidas e Interrupciones            | 14   |
| ♦ Generación Obligada                                      | 15   |
| ♦ Demanda Máxima de Potencia                               | 15   |
| ♦ Reserva Fría por Confiabilidad                           | 16   |
| ♦ Reserva Rodante y Reserva Fría en Demanda Máxima         | 17   |
| ♦ Interrupciones del Servicio                              | 18   |
| ♦ Programa Anual de Mantenimientos (PAM)                   | 31   |



### Referencias

- Variación Mensual: Relación entre el mes actual y el mes anterior.
- Variación Anual: Relación entre el mes actual y el mismo mes del año anterior.
- Acumulado Anual: Relación del promedio acumulado del año y el mismo período del año anterior.
- Variación de 3 meses: Relación entre el promedio móvil de 3 meses del período actual y el mismo período del año anterior.
- Variación de 12 meses: Relación entre el promedio móvil de 12 meses del período actual y el mismo período del año anterior.

## Resumen

| <b>Energía Transada</b>               |                                       | <b>GWh</b>       | <b>%</b>               |
|---------------------------------------|---------------------------------------|------------------|------------------------|
|                                       | Hidroeléctrica                        | 121.6            | 25.9%                  |
|                                       | Geotérmica                            | 103.9            | 22.1%                  |
|                                       | Térmica                               | 225.4            | 48.0%                  |
|                                       | Importaciones                         | 16.8             | 3.6%                   |
|                                       | Desvíos                               | 1.7              | 0.4%                   |
| <b>Total inyecciones MME</b>          |                                       | <b>469.4</b>     | <b>100.0%</b>          |
| (-)                                   | Exportaciones                         | 8.2              |                        |
|                                       | Desvíos                               | 0.5              |                        |
|                                       | Pérdidas de transmisión <sup>1/</sup> | 7.8              | 1.7%                   |
|                                       |                                       | <b>452.9</b>     |                        |
| <b>Demanda MME</b>                    |                                       | <b>GWh</b>       | <b>%</b>               |
|                                       | Mercado de Contratos                  | 164.5            | 36%                    |
|                                       | Mercado Regulador del Sistema         | 288.4            | 64%                    |
| <b>Total Demanda en el MME</b>        |                                       | <b>452.9</b>     | <b>100.0%</b>          |
| <b>Energía de Paso</b>                |                                       | <b>Retiro</b>    | <b>Inyección</b>       |
|                                       | Guatemala                             | 0.0              | 0.5                    |
|                                       | Honduras                              | 0.5              | 0.0                    |
| <b>Precios MRS</b>                    |                                       | <b>\$/MWh</b>    |                        |
| <b>Promedio mensual <sup>2/</sup></b> |                                       | <b>\$ 132.77</b> |                        |
| <b>Demanda Máxima de Potencia</b>     |                                       | <b>MW</b>        | <b>Fecha/hora</b>      |
|                                       | Máxima                                | <b>890</b>       | <b>02-Sep-09 14:30</b> |
|                                       | Mínima                                | <b>415</b>       | <b>27-Sep-09 3:30</b>  |

1/ Como porcentaje de la inyección.

2/ Nota: a partir del 21 de abril 2005, los precios de compra en el MRS se han calculado en base al Acuerdo No. 78-E-2005 y sus respectivas modificaciones, emitidas por la Superintendencia General de Electricidad y Telecomunicaciones.

**Inyecciones**

| Rubros   | Septiembre 2009 |                      | Var. %              | Acumulado Anual <sup>2/</sup> |             | Últimos 3 meses <sup>2/</sup> |             | Últimos 12 meses <sup>2/</sup> |            |
|--|-----------------|----------------------|---------------------|-------------------------------|-------------|-------------------------------|-------------|--------------------------------|------------|
|  | GWh             | Var. % <sup>2/</sup> | Anual <sup>2/</sup> | GWh                           | Var. %      | GWh                           | Var. %      | GWh                            | Var. %     |
| Generación nacional transada                     | 450.9           | -1.4                 | -5.9                | 4,042.0                       | -4.3        | 461.8                         | -4.7        | 449.2                          | -3.3       |
| Intercambios Internacionales (+/-) <sup>1/</sup> | 9.8             | 51.0                 | -153.8              | 132.5                         | -552.2      | 5.5                           | -145.3      | 13.0                           | -707.6     |
| Pérdidas de transmisión                          | 7.8             | -2.6                 | -13.3               | 69.6                          | -3.8        | 8.1                           | -12.6       | 7.8                            | -5.8       |
| <b>Demanda Mercado Mayorista</b>                 | <b>452.9</b>    | <b>-0.8</b>          | <b>-0.3</b>         | <b>4,119.8</b>                | <b>-0.1</b> | <b>460.7</b>                  | <b>-0.6</b> | <b>455.9</b>                   | <b>0.4</b> |

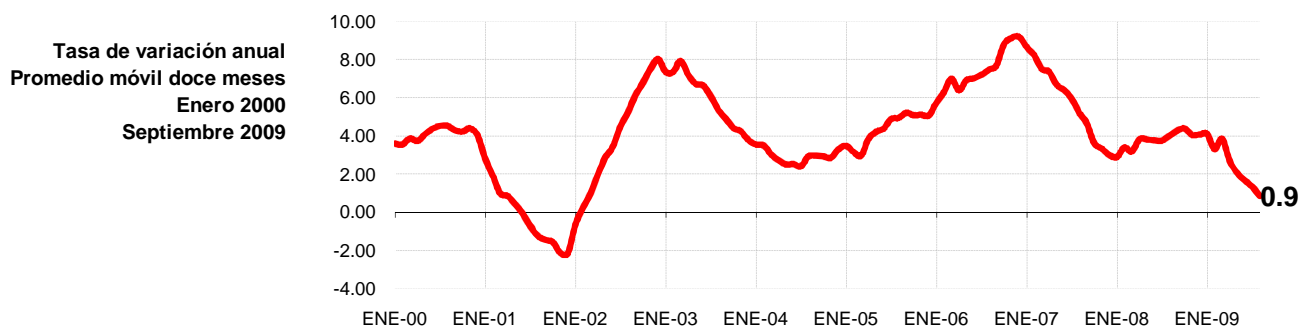
<sup>1/</sup> Signo (+) : Saldo comercial neto a favor de importaciones

Signo (-) : Saldo comercial neto a favor de exportaciones

Incluye desvíos

<sup>2/</sup> Para el detalle de los periodos ver el apartado de Referencias de la Pág. 3.

**Comportamiento de la demanda de energía en el Mercado Mayorista de Electricidad**



## Inyecciones Por Recurso Inyectado

| Participante de mercado | Septiembre 2009 |                      | Var. %              | Acumulado Anual <sup>2/</sup> |        | Últimos 3 meses <sup>2/</sup> |        | Últimos 12 meses <sup>2/</sup> |        |
|-------------------------|-----------------|----------------------|---------------------|-------------------------------|--------|-------------------------------|--------|--------------------------------|--------|
|                         | GWh             | Var. % <sup>2/</sup> | Anual <sup>2/</sup> | GWh                           | Var. % | GWh                           | Var. % | GWh                            | Var. % |
| Hidroeléctrica          | 121.6           | 11.0                 | -56.9               | 1,150.7                       | -20.7  | 132.4                         | -48.6  | 144.4                          | -13.0  |
| Geotérmica              | 103.9           | -19.8                | -5.8                | 1,045.4                       | -1.5   | 121.1                         | 6.4    | 117.1                          | 2.0    |
| Térmica                 | 225.4           | 3.4                  | 160.4               | 1,845.9                       | 7.9    | 208.3                         | 84.2   | 187.6                          | 2.3    |
| <b>Iny. Nacional</b>    | <b>450.9</b>    |                      |                     |                               |        |                               |        |                                |        |
| Importaciones           | 16.8            | -8.6                 | 27,965.1            | 179.1                         | 350.6  | 15.8                          | 907.7  | 18.5                           | 348.4  |
| <b>Total inyectado</b>  | <b>467.7</b>    |                      |                     |                               |        |                               |        |                                |        |

<sup>1/</sup> Incluye pérdidas por transmisión

<sup>2/</sup> Para el detalle de los períodos ver el apartado de Referencias de la Pág. 3.

## Inyección Nacional por Participante de Mercado

| Participante de mercado | Septiembre 2009 |                      | Var. %              | Acumulado Anual <sup>2/</sup> |        | Últimos 3 meses <sup>2/</sup> |        | Últimos 12 meses <sup>2/</sup> |        |
|-------------------------|-----------------|----------------------|---------------------|-------------------------------|--------|-------------------------------|--------|--------------------------------|--------|
|                         | GWh             | Var. % <sup>2/</sup> | Anual <sup>2/</sup> | GWh                           | Var. % | GWh                           | Var. % | GWh                            | Var. % |
| Cel                     | 121.6           | 11.0%                | -56.9%              | 1,150.7                       | -5.6%  | 132.4                         | -48.6% | 144.4                          | -13.0% |
| Nejapa Power            | 51.7            | 8.4%                 | 264.0%              | 379.2                         | -30.6% | 45.5                          | 87.4%  | 36.2                           | -28.7% |
| Duke Energy             | 73.3            | 10.8%                | 120.5%              | 558.9                         | -25.4% | 64.1                          | 30.4%  | 57.3                           | -21.2% |
| LaGeo                   | 103.9           | -19.8%               | -5.8%               | 1,045.4                       | -4.4%  | 121.1                         | 6.4%   | 117.1                          | 2.0%   |
| Cessa                   | 6.7             | 89.0%                | 94.7%               | 62.3                          | 66.8%  | 4.9                           | 110.3% | 7.1                            | 74.1%  |
| Cassa                   | 0.0             | 0.0%                 | 0.0%                | 75.6                          | 7.0%   | 0.0                           | -      | 16.9                           | 9.3%   |
| Textufil                | 17.9            | -6.4%                | 75.5%               | 165.4                         | 43.3%  | 17.1                          | 54.2%  | 17.6                           | 37.3%  |
| Ine, S.A.               | 61.4            | -5%                  | 287%                | 412.9                         | 36.7%  | 61.7                          | 259.1% | 41.2                           | 57.2%  |
| AES Clesa               | 0.0             | -100%                | -100%               | 0.1                           | -5.1%  | 0.0                           | 93.1%  | 0.0                            | -20.1% |
| Borealis                | 4.3             | -37%                 | 1%                  | 52.8                          | -11.3% | 5.8                           | 25.1%  | 5.7                            | -1.8%  |
| Gecsa                   | 6.1             | -5%                  | 77%                 | 48.5                          | 0.8%   | 5.2                           | 70.0%  | 5.1                            | 6.6%   |
| Inmobiliaria Apopa      | 4.0             | 1%                   | 109%                | 35.5                          | -      | 4.0                           | 200.1% | 3.8                            | 185.0% |
| Ing. El Angel           | 0.0             | 0%                   | 0%                  | 43.8                          | -      | -                             | 0.0%   | 10.0                           | -      |
| Ing. La Cabaña          | 0.0             | 0%                   | 0%                  | 11.0                          | -      | -                             | 0.0%   | 2.6                            | -      |
| <b>Total</b>            | <b>450.9</b>    |                      |                     |                               |        |                               |        |                                |        |

<sup>1/</sup> Inyecciones provenientes de la red de distribución

<sup>2/</sup> Para el detalle de los períodos ver el apartado de Referencias de la Pág. 3.

\*/ Variaciones mayores de 2000% no se detallan

## Tipo de Mercado (GWh)

| Mercado      | Ene          | Feb          | Mar          | Abr          | May          | Jun          | Jul          | Ago          | Sep          | Oct        | Nov        | Dic        | Total          |
|--------------|--------------|--------------|--------------|--------------|--------------|--------------|--------------|--------------|--------------|------------|------------|------------|----------------|
| MC           | 164.8        | 152.0        | 169.2        | 160.7        | 165.2        | 167.5        | 171.7        | 167.3        | 164.5        |            |            |            | 1,482.9        |
| MRS          | 300.1        | 276.1        | 307.6        | 292.1        | 296.4        | 286.1        | 301.0        | 289.0        | 288.4        |            |            |            | 2,636.8        |
| <b>Total</b> | <b>464.9</b> | <b>428.2</b> | <b>476.8</b> | <b>452.8</b> | <b>461.5</b> | <b>453.6</b> | <b>472.8</b> | <b>456.4</b> | <b>452.9</b> | <b>0.0</b> | <b>0.0</b> | <b>0.0</b> | <b>4,119.8</b> |

MC: Mercado de Contratos

MRS: Mercado Regulador del Sistema

## Contratos de Inyección (GWh)

| Participante de mercado | Ene          | Feb          | Mar          | Abr          | May          | Jun          | Jul          | Ago          | Sep          | Oct        | Nov        | Dic        | Total          |
|-------------------------|--------------|--------------|--------------|--------------|--------------|--------------|--------------|--------------|--------------|------------|------------|------------|----------------|
| Excelergy               | 6.4          | 4.9          | 5.4          | 4.7          | 5.8          | 13.4         | 18.0         | 12.2         | 13.5         |            |            |            | 84.5           |
| Cenérgica               | 0.0          | 0.0          | 0.0          | 0.0          | 0.0          | 0.0          | 0.0          | 0.0          | 0.0          |            |            |            | 0.0            |
| Origem                  | 0.0          | 0.0          | 0.0          | 0.0          | 0.0          | 7.2          | 18.7         | 17.5         | 3.0          |            |            |            | 46.4           |
| Caess                   | 0.0          | 0.0          | 0.0          | 0.0          | 0.0          | 0.0          | 0.0          | 0.0          | 0.0          |            |            |            | 0.0            |
| Delsur                  | 0.0          | 0.0          | 1.4          | 0.5          | 0.0          | 0.0          | 0.0          | 0.0          | 0.0          |            |            |            | 1.9            |
| AES Clesa               | 0.0          | 0.0          | 0.0          | 0.0          | 0.0          | 0.0          | 0.0          | 0.0          | 0.0          |            |            |            | 0.0            |
| Cel                     | 28.7         | 25.9         | 28.4         | 25.5         | 28.3         | 27.8         | 28.7         | 27.2         | 25.2         |            |            |            | 245.6          |
| Nejapa                  | 34.3         | 52.4         | 57.8         | 56.1         | 58.0         | 59.2         | 51.6         | 44.0         | 47.2         |            |            |            | 460.5          |
| Duke Energy             | 0.0          | 0.0          | 0.0          | 0.0          | 0.0          | 0.0          | 0.0          | 0.0          | 0.0          |            |            |            | 0.0            |
| LaGeo                   | 87.8         | 60.9         | 67.8         | 65.7         | 67.9         | 65.7         | 61.2         | 66.1         | 62.8         |            |            |            | 606.1          |
| Cessa                   | 0.2          | 0.2          | 0.2          | 0.2          | 0.2          | 0.2          | 0.2          | 0.1          | 0.2          |            |            |            | 1.7            |
| Cassa                   | 0.0          | 0.0          | 0.0          | 0.0          | 0.0          | 0.0          | 0.0          | 0.0          | 0.0          |            |            |            | 0.0            |
| Lynx                    | 0.0          | 0.0          | 0.0          | 0.0          | 0.0          | 0.0          | 0.0          | 0.0          | 0.0          |            |            |            | 0.0            |
| Merc-Elec               | 0.2          | 0.1          | 0.5          | 1.1          | 3.0          | 11.7         | 5.8          | 0.8          | 3.8          |            |            |            | 27.0           |
| Textufil                | 0.0          | 0.0          | 0.0          | 0.0          | 0.0          | 6.5          | 11.2         | 11.2         | 12.2         |            |            |            | 41.0           |
| Ine-Com                 | 0.0          | 0.0          | 0.0          | 0.0          | 0.0          | 0.0          | 0.0          | 0.0          | 0.0          |            |            |            | 0.0            |
| Borealis                | 8.1          | 7.8          | 8.2          | 8.0          | 5.2          | 5.7          | 7.5          | 7.7          | 5.1          |            |            |            | 63.3           |
| Gecsa                   | 0.0          | 0.0          | 0.0          | 0.0          | 0.0          | 0.0          | 0.0          | 0.0          | 0.0          |            |            |            | 0.0            |
| CECAM                   | 0.0          | 0.0          | 0.0          | 0.0          | 0.8          | 2.5          | 0.7          | 1.6          | 4.2          |            |            |            | 9.7            |
| C.X. <sup>1/</sup>      | -1.0         | -0.1         | -0.5         | -1.2         | -4.2         | -32.4        | -31.7        | -21.2        | -12.6        |            |            |            | -104.7         |
| <b>Total</b>            | <b>164.8</b> | <b>152.0</b> | <b>169.2</b> | <b>160.7</b> | <b>165.1</b> | <b>167.5</b> | <b>171.7</b> | <b>167.3</b> | <b>164.5</b> | <b>0.0</b> | <b>0.0</b> | <b>0.0</b> | <b>1,482.9</b> |

<sup>1/</sup> CX: Contratos de Exportación

## Retiros

## Mercado de Contratos de Retiro por Participante de Mercado (GWh)

| Participante de Mercado | Ene          | Feb          | Mar          | Abr          | May          | Jun          | Jul          | Ago          | Sep          | Oct        | Nov        | Dic        | Total          |
|-------------------------|--------------|--------------|--------------|--------------|--------------|--------------|--------------|--------------|--------------|------------|------------|------------|----------------|
| CAESS                   | 37.9         | 47.1         | 52.0         | 50.5         | 52.2         | 50.5         | 47.7         | 43.2         | 44.9         |            |            |            | 426.0          |
| DELSUR                  | 66.3         | 41.9         | 47.4         | 45.1         | 43.0         | 42.3         | 45.3         | 45.6         | 41.7         |            |            |            | 418.6          |
| CLESA                   | 13.1         | 16.5         | 18.2         | 17.7         | 18.3         | 17.7         | 16.7         | 15.0         | 15.6         |            |            |            | 148.9          |
| EEO                     | 5.1          | 7.9          | 8.7          | 8.4          | 8.7          | 14.9         | 18.7         | 17.6         | 19.2         |            |            |            | 109.3          |
| DEUSEM                  | 1.0          | 1.6          | 1.7          | 1.7          | 1.7          | 1.7          | 1.5          | 1.3          | 1.4          |            |            |            | 13.6           |
| Edesal                  | 0.0          | 0.0          | 0.4          | 0.4          | 0.5          | 0.5          | 0.5          | 0.5          | 0.5          |            |            |            | 3.1            |
| CEL-COM                 | 0.3          | 0.3          | 0.3          | 0.3          | 0.3          | 0.3          | 0.3          | 0.3          | 0.3          |            |            |            | 2.7            |
| LAGEO-COM               | 0.0          | 0.0          | 0.0          | 0.0          | 0.0          | 0.0          | 0.0          | 0.0          | 0.0          |            |            |            | 0.0            |
| EXCELERGY               | 12.4         | 11.0         | 12.1         | 11.2         | 12.2         | 12.0         | 12.5         | 12.0         | 12.3         |            |            |            | 107.6          |
| ORIGEM                  | 0.0          | 0.0          | 0.0          | 0.0          | 0.0          | 0.0          | 0.0          | 0.0          | 0.0          |            |            |            | 0.0            |
| ANDA                    | 28.4         | 25.6         | 28.1         | 25.2         | 28.1         | 27.5         | 28.4         | 26.9         | 24.9         |            |            |            | 243.0          |
| LYNX                    | 0.0          | 0.0          | 0.0          | 0.0          | 0.0          | 0.0          | 0.0          | 0.0          | 0.0          |            |            |            | 0.0            |
| CESSA                   | 0.2          | 0.2          | 0.2          | 0.2          | 0.2          | 0.2          | 0.2          | 0.1          | 0.2          |            |            |            | 1.7            |
| MERC-ELECT              | 0.0          | 0.0          | 0.0          | 0.0          | 0.0          | 0.0          | 0.0          | 0.0          | 0.0          |            |            |            | 0.0            |
| ABRUZZO                 | 0.0          | 0.0          | 0.0          | 0.0          | 0.0          | 0.0          | 0.0          | 0.0          | 0.0          |            |            |            | 0.0            |
| BOREALIS                | 0.0          | 0.0          | 0.0          | 0.0          | 0.0          | 0.0          | 0.0          | 4.9          | 3.6          |            |            |            | 0.0            |
| OTROS                   | 0.0          | 0.0          | 0.0          | 0.0          | 0.0          | 0.0          | 0.0          | 0.0          | 0.0          |            |            |            | 0.0            |
| <b>Total MC</b>         | <b>164.8</b> | <b>152.0</b> | <b>169.2</b> | <b>160.7</b> | <b>165.2</b> | <b>167.5</b> | <b>171.7</b> | <b>167.3</b> | <b>164.5</b> | <b>0.0</b> | <b>0.0</b> | <b>0.0</b> | <b>1,474.5</b> |

Los valores negativos corresponden a desviaciones de contratos inyectadas al MRS.

## Mercado Regulator del Sistema por Participante de Mercado (GWh)

| Participante de Mercado | Ene          | Feb          | Mar          | Abr          | May          | Jun          | Jul          | Ago          | Sep          | Oct        | Nov        | Dic        | Total          |
|-------------------------|--------------|--------------|--------------|--------------|--------------|--------------|--------------|--------------|--------------|------------|------------|------------|----------------|
| CAESS                   | 144.0        | 122.0        | 147.1        | 127.7        | 132.8        | 135.3        | 145.4        | 141.7        | 141.6        |            |            |            | 1,237.5        |
| DELSUR                  | 35.1         | 53.9         | 47.8         | 56.7         | 60.3         | 57.2         | 60.4         | 50.8         | 54.3         |            |            |            | 476.4          |
| CLESA                   | 59.8         | 49.2         | 54.7         | 53.4         | 52.5         | 50.5         | 53.9         | 53.3         | 50.5         |            |            |            | 477.8          |
| EEO                     | 41.4         | 33.6         | 39.1         | 39.9         | 38.2         | 29.5         | 27.8         | 28.0         | 25.2         |            |            |            | 302.8          |
| DEUSEM                  | 9.4          | 8.1          | 8.8          | 8.7          | 9.0          | 8.3          | 9.1          | 9.2          | 8.7          |            |            |            | 79.5           |
| B&D                     | 0.5          | 0.6          | 0.6          | 0.5          | 0.6          | 2.0          | 2.1          | 2.0          | 2.1          |            |            |            | 11.0           |
| Edesal                  | 7.0          | 6.2          | 6.6          | 1.3          | 0.5          | 0.7          | 0.7          | 0.9          | 0.9          |            |            |            | 25.0           |
| EXCELERGY               | 0.0          | -0.4         | -0.1         | -0.2         | -0.1         | 0.0          | -0.1         | 0.0          | -0.1         |            |            |            | -1.2           |
| CEL-COM                 | 0.0          | 0.0          | 0.0          | 0.0          | 0.0          | 0.0          | 0.0          | 0.0          | 0.0          |            |            |            | 0.0            |
| LAGEO-COM               | 0.0          | 0.0          | 0.0          | 0.0          | 0.0          | 0.0          | 0.0          | 0.0          | 0.0          |            |            |            | 0.0            |
| Cenergica               | 0.0          | 0.0          | 0.0          | 0.0          | 0.0          | 0.0          | 0.0          | 0.0          | 0.0          |            |            |            | 0.0            |
| MER-ELEC                | 0.0          | 0.0          | 0.0          | 0.0          | 0.0          | 0.0          | 0.0          | 0.0          | 0.0          |            |            |            | 0.0            |
| ORIGEM                  | 0.0          | 0.0          | 0.0          | 0.0          | 0.0          | 0.0          | 0.0          | 0.0          | 0.0          |            |            |            | 0.0            |
| LYNX                    | 0.0          | 0.0          | 0.0          | 0.0          | 0.0          | 0.0          | 0.0          | 0.0          | 0.0          |            |            |            | 0.0            |
| Abruzzo                 | 0.0          | 0.0          | 0.0          | 0.0          | 0.0          | 0.0          | 0.0          | 0.0          | 0.0          |            |            |            | 0.3            |
| Edesal-Com              | 0.6          | 0.6          | 0.6          | 0.6          | 0.6          | 0.6          | 0.7          | 0.7          | 0.6          |            |            |            | 5.7            |
| Ine-Com                 | 0.0          | 0.0          | 0.0          | 0.0          | 0.0          | 0.0          | 0.0          | 0.0          | 0.0          |            |            |            | 0.0            |
| Borealis                | 0.0          | 0.0          | 0.0          | 0.0          | 0.0          | 0.0          | 0.0          | 0.0          | 0.0          |            |            |            | 0.0            |
| Gecsa                   | 0.0          | 0.0          | 0.0          | 0.0          | 0.0          | 0.0          | 0.0          | 0.0          | 0.0          |            |            |            | 0.0            |
| ANDA                    | -1.4         | -1.1         | -1.1         | 0.9          | -2.6         | -1.7         | -1.4         | -0.3         | 0.5          |            |            |            | -8.2           |
| INVINTER                | 1.8          | 1.9          | 1.5          | 0.7          | 1.9          | 1.2          | 0.1          | 0.5          | 1.6          |            |            |            | 11.2           |
| CEL                     | 0.3          | 0.3          | 0.3          | 0.3          | 0.2          | 0.1          | 0.1          | 0.3          | 0.4          |            |            |            | 2.5            |
| Nejapa                  | 0.1          | 0.1          | 0.1          | 0.0          | 0.1          | 0.1          | 0.1          | 0.1          | 0.1          |            |            |            | 0.9            |
| LAGEO                   | 0.7          | 0.5          | 0.6          | 0.8          | 0.7          | 0.8          | 0.6          | 0.6          | 0.7          |            |            |            | 5.9            |
| DUKE                    | 0.3          | 0.3          | 0.2          | 0.2          | 0.2          | 0.3          | 0.3          | 0.3          | 0.3          |            |            |            | 2.4            |
| CESSA                   | 0.0          | 0.0          | 0.0          | 0.0          | 0.2          | 0.2          | 0.1          | 0.1          | 0.1          |            |            |            | 0.7            |
| CASSA                   | 0.0          | 0.0          | 0.0          | 0.0          | 0.3          | 0.3          | 0.4          | 0.3          | 0.4          |            |            |            | 1.7            |
| INE                     | 0.0          | 0.0          | 0.0          | 0.0          | 0.0          | 0.0          | 0.0          | 0.0          | 0.0          |            |            |            | 0.1            |
| Consorcio Int.          | 0.3          | 0.3          | 0.5          | 0.4          | 0.6          | 0.6          | 0.7          | 0.6          | 0.6          |            |            |            | 4.6            |
| Textufil                | 0.0          | 0.0          | 0.0          | 0.0          | 0.0          | 0.0          | 0.0          | 0.0          | 0.0          |            |            |            | 0.1            |
| Inm. Apopa              | 0.0          | 0.0          | 0.0          | 0.0          | 0.0          | 0.0          | 0.0          | 0.0          | 0.0          |            |            |            | 0.0            |
| Desvíos                 |              |              |              |              |              |              |              |              |              |            |            |            | 0.0            |
| <b>Total MRS</b>        | <b>300.1</b> | <b>276.1</b> | <b>307.6</b> | <b>292.1</b> | <b>296.4</b> | <b>286.1</b> | <b>301.0</b> | <b>289.0</b> | <b>288.4</b> | <b>0.0</b> | <b>0.0</b> | <b>0.0</b> | <b>2,636.8</b> |

## Comercio Internacional

## Importaciones por Participante de Mercado (GWh)

| Participante de mercado | Ene         | Feb         | Mar         | Abr         | May         | Jun        | Jul         | Ago         | Sep         | Oct        | Nov        | Dic        | Total        |
|-------------------------|-------------|-------------|-------------|-------------|-------------|------------|-------------|-------------|-------------|------------|------------|------------|--------------|
| CLESA                   | 0.0         | 0.0         | 0.0         | 0.0         | 0.0         | 0.0        | 0.0         | 0.0         | 0.0         |            |            |            | 0.0          |
| EXCELERGY               | 2.3         | 5.4         | 6.5         | 1.6         | 4.6         | 0.4        | 1.8         | 2.6         | 3.6         |            |            |            | 28.8         |
| CENERGICA               | 2.4         | 0.0         | 4.1         | 0.2         | 0.7         | 0.0        | 0.8         | 0.2         | 1.0         |            |            |            | 9.3          |
| MERCELEC                | 14.2        | 9.3         | 9.0         | 5.7         | 6.4         | 0.7        | 4.2         | 6.7         | 5.3         |            |            |            | 61.5         |
| ORIGEM                  | 0.6         | 6.7         | 11.2        | 9.6         | 2.3         | 0.8        | 2.9         | 6.5         | 2.4         |            |            |            | 43.0         |
| LYNX                    | 0.0         | 0.0         | 0.0         | 0.0         | 0.0         | 0.0        | 0.0         | 0.0         | 0.0         |            |            |            | 0.0          |
| CECAM                   | 1.3         | 5.3         | 6.5         | 5.9         | 5.0         | 1.4        | 2.4         | 2.4         | 4.3         |            |            |            | 34.4         |
| DELSUR                  | 0.0         | 0.0         | 0.0         | 0.5         | 0.0         | 0.0        | 0.0         | 0.0         | 0.0         |            |            |            | 0.5          |
| CENER                   | 0.0         | 0.0         | 0.0         | 0.0         | 0.0         | 0.0        | 0.0         | 0.0         | 0.3         |            |            |            |              |
| <b>Total</b>            | <b>20.7</b> | <b>26.6</b> | <b>37.3</b> | <b>23.5</b> | <b>18.9</b> | <b>3.3</b> | <b>12.1</b> | <b>18.4</b> | <b>16.8</b> | <b>0.0</b> | <b>0.0</b> | <b>0.0</b> | <b>177.5</b> |

## Exportaciones por Participante de Mercado (GWh)

| Participante de mercado | Ene        | Feb        | Mar        | Abr        | May        | Jun         | Jul        | Ago         | Sep        | Oct        | Nov        | Dic        | Total       |
|-------------------------|------------|------------|------------|------------|------------|-------------|------------|-------------|------------|------------|------------|------------|-------------|
| Excelergy               | 0.0        | 0.0        | 0.0        | 0.0        | 0.0        | 0.5         | 0.4        | 0.0         | 0.6        |            |            |            | 1.8         |
| Cenérgica               | 0.0        | 0.0        | 0.00       | 0.00       | 0.0        | 1.6         | 1.0        | 0.7         | 0.5        |            |            |            | 3.9         |
| Merelec                 | 0.2        | 0.1        | 0.4        | 1.0        | 2.2        | 5.8         | 1.5        | 0.7         | 1.7        |            |            |            | 13.6        |
| Origem                  | 0.0        | 0.0        | 0.0        | 0.0        | 0.0        | 2.0         | 6.4        | 10.0        | 1.9        |            |            |            | 20.4        |
| Lynx                    | 0.0        | 0.0        | 0.0        | 0.0        | 0.0        | 0.0         | 0.0        | 0.0         | 0.0        |            |            |            | 0.0         |
| Abruzzo                 | 0.0        | 0.0        | 0.0        | 0.0        | 0.0        | 0.0         | 0.0        | 0.0         | 0.0        |            |            |            | 0.0         |
| Ine-Com                 | 0.0        | 0.0        | 0.0        | 0.0        | 0.0        | 0.0         | 0.0        | 0.0         | 0.0        |            |            |            | 0.0         |
| Cecam                   | 0.0        | 0.0        | 0.0        | 0.0        | 0.7        | 1.1         | 0.4        | 1.3         | 3.6        |            |            |            | 7.0         |
| <b>Total</b>            | <b>0.2</b> | <b>0.1</b> | <b>0.5</b> | <b>1.1</b> | <b>3.0</b> | <b>11.1</b> | <b>9.7</b> | <b>12.7</b> | <b>8.2</b> | <b>0.0</b> | <b>0.0</b> | <b>0.0</b> | <b>46.6</b> |

## Comercio Internacional por frontera (GWh)

| Meses        | Guatemala   |             | Honduras    |              | Total       |              |
|--------------|-------------|-------------|-------------|--------------|-------------|--------------|
|              | Exportac.   | Importac.   | Exportac.   | Importac.    | Exportac.   | Importac.    |
| ENERO        | 0.00        | 2.32        | 0.24        | 18.29        | 0.2         | 20.6         |
| FEBRERO      | 0.0         | 13.0        | 0.1         | 13.7         | 0.1         | 26.7         |
| MARZO        | 0.0         | 20.9        | 0.5         | 17.8         | 0.5         | 38.7         |
| ABRIL        | 0.0         | 11.4        | 1.1         | 12.1         | 1.1         | 23.5         |
| MAYO         | 0.0         | 3.3         | 3.0         | 15.6         | 3.0         | 18.9         |
| JUNIO        | 2.4         | 0.8         | 8.7         | 2.6          | 11.1        | 3.3          |
| JULIO        | 6.0         | 6.9         | 3.7         | 5.2          | 9.7         | 12.1         |
| AGOSTO       | 10.8        | 8.1         | 1.9         | 10.3         | 12.7        | 18.5         |
| SEPTIEMBRE   | 3.0         | 7.1         | 5.3         | 9.8          | 8.2         | 16.8         |
| OCTUBRE      |             |             |             |              | 0.0         | 0.0          |
| NOVIEMBRE    |             |             |             |              | 0.0         | 0.0          |
| DICIEMBRE    |             |             |             |              | 0.0         | 0.0          |
| <b>Total</b> | <b>22.2</b> | <b>73.9</b> | <b>24.4</b> | <b>105.3</b> | <b>46.6</b> | <b>179.1</b> |



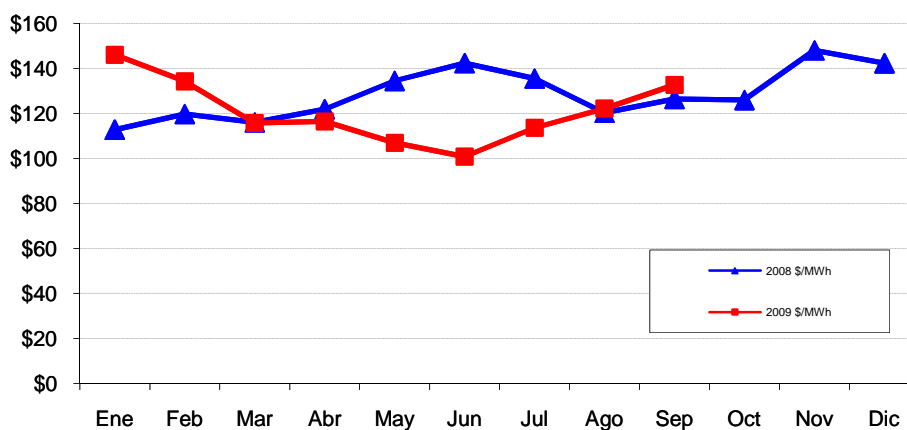
## Evolución de los precios en el MRS

| Mes | Promedio       |                | Variaciones % |        |        |                |
|-----|----------------|----------------|---------------|--------|--------|----------------|
|     | 2008<br>\$/MWh | 2009<br>\$/MWh | Mes           | Anual  | Acum.  | Prom.<br>anual |
| Ene | 112.85         | 146.03         | 2.59          | 29.40  | 2.59   | 131.62         |
| Feb | 119.78         | 134.30         | -8.03         | 12.12  | -5.65  | 132.83         |
| Mar | 116.05         | 115.73         | -13.83        | -0.28  | -18.69 | 132.81         |
| Abr | 121.90         | 116.50         | 0.67          | -4.43  | -18.15 | 132.36         |
| May | 134.53         | 107.00         | -8.16         | -20.46 | -24.83 | 130.06         |
| Jun | 142.42         | 100.79         | -5.80         | -29.23 | -29.19 | 126.59         |
| Jul | 135.54         | 113.60         | 12.71         | -16.19 | -20.19 | 124.77         |
| Ago | 120.34         | 122.13         | 7.51          | 1.49   | -14.19 | 124.92         |
| Sep | 126.52         | 132.77         | 8.71          | 4.94   | -6.72  | 125.44         |
| Oct | 125.98         |                |               |        |        |                |
| Nov | 148.07         |                |               |        |        |                |
| Dic | 142.34         |                |               |        |        |                |

Mensual: Relación mes inmediato anterior  
 Anual: Relación igual mes año anterior  
 Acumulada: Relación respecto a diciembre año anterior  
 Promedio anual: Relación últimos doce meses

**Precio Máximo horario:** \$ 173.80 / MWh

**Precio Mínimo horario:** \$ 82.07 / MWh



## Precios SIS (\$/MWh)

| FECHA     | 0      | 1      | 2      | 3      | 4      | 5      | 6      | 7       | 8       | 9       | 10      | 11      | 12      | 13      | 14      | 15      | 16      | 17      | 18      | 19      | 20      | 21      | 22     | 23     |
|-----------|--------|--------|--------|--------|--------|--------|--------|---------|---------|---------|---------|---------|---------|---------|---------|---------|---------|---------|---------|---------|---------|---------|--------|--------|
| 01-Sep-09 | 69.548 | 69.552 | 69.551 | 69.545 | 69.547 | 69.046 | 69.051 | 73.355  | 76.612  | 96.661  | 97.554  | 97.355  | 109.852 | 110.353 | 98.553  | 98.552  | 92.027  | 85.655  | 82.355  | 82.358  | 82.357  | 72.456  | 68.654 | 69.059 |
| 02-Sep-09 | 64.993 | 64.991 | 64.992 | 64.988 | 64.991 | 64.994 | 64.986 | 73.003  | 74.998  | 96.003  | 97.000  | 97.001  | 110.004 | 110.497 | 97.005  | 96.997  | 91.999  | 83.004  | 81.999  | 81.995  | 82.000  | 72.003  | 64.999 | 65.003 |
| 03-Sep-09 | 65.048 | 65.052 | 65.051 | 65.045 | 65.047 | 65.046 | 69.901 | 75.945  | 81.742  | 89.851  | 93.544  | 96.245  | 110.242 | 110.293 | 97.343  | 96.792  | 88.747  | 79.945  | 81.885  | 91.948  | 81.807  | 68.846  | 66.144 | 65.649 |
| 04-Sep-09 | 65.053 | 65.051 | 65.052 | 65.038 | 65.051 | 65.054 | 67.396 | 72.403  | 79.198  | 84.603  | 92.000  | 98.901  | 110.244 | 110.287 | 97.305  | 96.397  | 90.499  | 85.904  | 83.999  | 86.295  | 81.810  | 68.853  | 65.699 | 65.403 |
| 05-Sep-09 | 65.053 | 65.051 | 65.052 | 65.038 | 65.051 | 65.054 | 67.396 | 72.403  | 79.198  | 84.603  | 92.000  | 98.901  | 110.244 | 110.287 | 97.305  | 96.397  | 90.499  | 85.904  | 83.999  | 86.295  | 81.810  | 68.853  | 65.699 | 65.403 |
| 06-Sep-09 | 65.003 | 65.001 | 65.002 | 64.998 | 65.001 | 65.004 | 64.996 | 73.003  | 74.998  | 96.003  | 97.000  | 97.001  | 110.004 | 110.497 | 92.005  | 91.997  | 91.999  | 83.004  | 81.999  | 81.995  | 82.000  | 72.003  | 64.999 | 65.003 |
| 07-Sep-09 | 65.003 | 65.001 | 65.002 | 64.998 | 65.001 | 65.004 | 64.996 | 73.003  | 74.998  | 96.003  | 97.000  | 97.001  | 110.004 | 110.497 | 90.005  | 89.997  | 89.999  | 83.004  | 81.999  | 81.995  | 82.000  | 72.003  | 64.999 | 65.003 |
| 08-Sep-09 | 63.323 | 63.321 | 63.322 | 63.318 | 59.441 | 64.444 | 66.836 | 69.473  | 73.808  | 84.903  | 94.680  | 94.981  | 110.424 | 110.417 | 91.965  | 91.707  | 88.899  | 83.184  | 89.829  | 89.725  | 82.630  | 69.803  | 64.139 | 64.163 |
| 09-Sep-09 | 63.273 | 63.281 | 63.282 | 63.278 | 62.961 | 64.404 | 66.796 | 69.433  | 70.678  | 74.083  | 83.980  | 96.001  | 98.104  | 110.417 | 110.405 | 91.707  | 80.399  | 83.184  | 87.999  | 93.095  | 82.630  | 69.803  | 64.139 | 64.163 |
| 10-Sep-09 | 63.283 | 63.281 | 63.282 | 63.278 | 62.961 | 64.404 | 66.796 | 69.433  | 70.678  | 74.083  | 83.980  | 97.501  | 98.784  | 110.527 | 110.535 | 92.097  | 80.399  | 83.184  | 87.999  | 93.095  | 82.630  | 69.803  | 64.139 | 64.163 |
| 11-Sep-09 | 63.283 | 63.281 | 63.282 | 63.278 | 62.961 | 64.404 | 66.796 | 69.433  | 70.678  | 74.083  | 83.980  | 97.451  | 98.754  | 110.517 | 110.525 | 92.087  | 80.399  | 83.184  | 87.999  | 93.095  | 82.630  | 69.803  | 64.139 | 64.163 |
| 12-Sep-09 | 61.533 | 61.531 | 61.532 | 61.528 | 61.531 | 59.534 | 56.196 | 68.203  | 70.528  | 75.403  | 85.580  | 98.041  | 99.344  | 110.087 | 110.025 | 95.217  | 91.379  | 89.434  | 90.009  | 93.075  | 82.370  | 66.983  | 57.619 | 63.643 |
| 13-Sep-09 | 62.673 | 62.671 | 62.672 | 62.668 | 62.671 | 69.674 | 69.666 | 75.683  | 75.838  | 75.843  | 96.350  | 98.841  | 98.844  | 110.217 | 110.175 | 95.647  | 95.649  | 95.654  | 96.159  | 96.155  | 95.650  | 96.143  | 63.469 | 65.473 |
| 14-Sep-09 | 68.633 | 68.651 | 68.652 | 68.648 | 68.651 | 75.654 | 75.646 | 94.163  | 94.158  | 94.193  | 94.350  | 98.841  | 98.844  | 110.377 | 110.385 | 98.837  | 98.679  | 98.654  | 98.649  | 98.645  | 98.650  | 74.663  | 69.599 | 68.633 |
| 15-Sep-09 | 64.483 | 64.481 | 64.482 | 64.478 | 64.481 | 72.984 | 72.976 | 73.193  | 73.348  | 73.353  | 81.350  | 92.351  | 92.704  | 110.377 | 110.385 | 92.847  | 92.689  | 92.614  | 94.199  | 94.215  | 92.650  | 64.613  | 64.479 | 64.483 |
| 16-Sep-09 | 64.483 | 64.481 | 64.482 | 64.478 | 64.481 | 68.784 | 72.976 | 73.193  | 80.348  | 80.253  | 80.470  | 110.431 | 110.454 | 94.777  | 94.385  | 92.847  | 88.289  | 88.214  | 92.199  | 92.225  | 92.250  | 64.613  | 64.479 | 64.483 |
| 17-Sep-09 | 64.483 | 64.481 | 64.482 | 64.478 | 64.481 | 68.784 | 72.976 | 73.193  | 80.348  | 80.253  | 80.470  | 110.431 | 110.454 | 94.777  | 94.385  | 92.847  | 88.289  | 88.214  | 92.199  | 92.225  | 92.250  | 44.443  | 64.479 | 64.483 |
| 18-Sep-09 | 64.458 | 64.463 | 64.463 | 64.457 | 64.456 | 66.992 | 88.387 | 99.287  | 109.205 | 117.886 | 129.799 | 129.795 | 129.805 | 129.803 | 129.803 | 129.803 | 124.997 | 117.999 | 106.202 | 101.795 | 94.797  | 84.404  | 64.455 | 64.462 |
| 19-Sep-09 | 75.068 | 75.073 | 75.073 | 75.067 | 75.066 | 88.672 | 99.067 | 110.567 | 120.595 | 129.586 | 132.089 | 132.085 | 132.095 | 132.093 | 132.093 | 132.093 | 132.087 | 128.089 | 122.392 | 120.085 | 120.087 | 105.794 | 93.085 | 75.092 |
| 20-Sep-09 | 75.073 | 82.071 | 89.072 | 89.068 | 89.071 | 89.674 | 90.066 | 90.573  | 92.588  | 92.593  | 92.090  | 92.091  | 92.094  | 120.087 | 132.095 | 132.087 | 132.089 | 132.094 | 132.389 | 132.085 | 131.090 | 130.793 | 90.089 | 75.093 |
| 21-Sep-09 | 75.013 | 75.011 | 75.072 | 85.068 | 85.071 | 85.074 | 91.066 | 99.573  | 120.588 | 128.593 | 130.090 | 132.091 | 132.094 | 132.087 | 132.095 | 132.087 | 132.089 | 128.094 | 120.389 | 120.085 | 120.090 | 118.793 | 75.089 | 75.093 |
| 22-Sep-09 | 75.013 | 75.011 | 75.072 | 85.068 | 85.071 | 85.074 | 91.066 | 99.573  | 110.588 | 120.593 | 125.090 | 130.091 | 132.094 | 132.087 | 132.095 | 132.087 | 128.089 | 128.004 | 127.999 | 127.995 | 120.090 | 110.793 | 75.089 | 75.093 |
| 23-Sep-09 | 75.003 | 75.001 | 75.002 | 74.998 | 75.001 | 75.004 | 89.496 | 101.003 | 108.998 | 120.003 | 130.000 | 130.001 | 132.094 | 132.087 | 132.095 | 132.087 | 132.089 | 129.004 | 128.999 | 128.995 | 125.000 | 110.793 | 74.999 | 75.003 |
| 24-Sep-09 | 75.411 | 75.409 | 75.410 | 75.406 | 75.409 | 75.412 | 75.604 | 101.411 | 118.406 | 127.411 | 132.408 | 132.409 | 132.502 | 132.495 | 132.503 | 132.495 | 132.497 | 129.412 | 129.407 | 129.403 | 129.608 | 115.411 | 75.407 | 75.411 |
| 25-Sep-09 | 75.431 | 75.429 | 75.430 | 75.426 | 75.429 | 80.432 | 80.424 | 92.451  | 110.446 | 120.451 | 128.448 | 132.449 | 132.452 | 132.445 | 132.453 | 132.445 | 132.447 | 128.452 | 128.447 | 128.443 | 128.448 | 115.451 | 75.447 | 75.431 |
| 26-Sep-09 | 75.411 | 75.409 | 75.410 | 75.406 | 75.409 | 75.562 | 90.104 | 100.111 | 115.466 | 125.441 | 132.348 | 132.489 | 132.422 | 132.415 | 129.423 | 128.415 | 128.467 | 128.492 | 130.377 | 130.373 | 130.498 | 120.551 | 90.347 | 75.411 |
| 27-Sep-09 | 75.411 | 75.409 | 75.410 | 75.406 | 75.409 | 75.562 | 75.104 | 110.111 | 120.466 | 128.441 | 128.348 | 128.489 | 128.422 | 128.415 | 128.423 | 128.425 | 128.527 | 128.492 | 132.377 | 132.373 | 132.498 | 125.571 | 75.347 | 75.411 |
| 28-Sep-09 | 75.501 | 75.499 | 75.500 | 75.496 | 75.499 | 75.952 | 89.594 | 99.511  | 110.586 | 123.501 | 132.228 | 131.649 | 131.442 | 131.435 | 128.473 | 128.295 | 128.397 | 128.442 | 129.317 | 129.313 | 129.438 | 120.921 | 86.347 | 75.501 |
| 29-Sep-09 | 75.441 | 75.449 | 75.450 | 75.446 | 75.449 | 75.602 | 90.144 | 102.521 | 113.376 | 120.451 | 125.758 | 130.499 | 132.432 | 132.425 | 132.433 | 132.425 | 129.477 | 129.502 | 129.377 | 129.373 | 128.498 | 122.981 | 96.687 | 75.451 |
| 30-Sep-09 | 75.451 | 75.449 | 75.450 | 75.446 | 75.449 | 75.452 | 90.264 | 102.641 | 113.496 | 123.571 | 128.188 | 131.649 | 132.552 | 132.545 | 132.553 | 132.545 | 131.597 | 129.452 | 129.447 | 129.443 | 129.448 | 125.451 | 95.447 | 75.451 |

|  |    |         |
|--|----|---------|
| Precio mínimo de la serie              | \$ | 44.443  |
| Precio máximo de la serie              | \$ | 132.553 |
| Precio promedio aritmético de la serie | \$ | 92.197  |

Precios EST (\$/MWh)

| FECHA     | 0      | 1      | 2      | 3      | 4      | 5      | 6      | 7      | 8      | 9      | 10     | 11     | 12     | 13     | 14     | 15     | 16     | 17     | 18     | 19     | 20     | 21     | 22     | 23     |
|-----------|--------|--------|--------|--------|--------|--------|--------|--------|--------|--------|--------|--------|--------|--------|--------|--------|--------|--------|--------|--------|--------|--------|--------|--------|
| 01-Sep-09 | 35.759 | 28.751 | 28.238 | 28.475 | 28.540 | 28.103 | 38.513 | 32.029 | 43.264 | 36.221 | 35.037 | 34.763 | 29.507 | 31.067 | 38.315 | 38.797 | 37.913 | 39.523 | 49.905 | 55.977 | 47.381 | 57.660 | 53.733 | 42.068 |
| 02-Sep-09 | 53.825 | 53.618 | 48.645 | 54.090 | 52.561 | 53.243 | 59.596 | 45.226 | 59.264 | 40.864 | 41.654 | 40.562 | 37.647 | 35.182 | 40.403 | 42.877 | 44.378 | 48.651 | 55.138 | 58.901 | 61.028 | 73.403 | 78.698 | 53.359 |
| 03-Sep-09 | 55.172 | 53.082 | 51.192 | 49.003 | 54.854 | 57.638 | 55.939 | 45.150 | 59.537 | 51.611 | 44.364 | 40.704 | 33.853 | 34.275 | 42.603 | 44.595 | 51.447 | 50.055 | 58.827 | 53.100 | 61.955 | 80.431 | 79.373 | 61.874 |
| 04-Sep-09 | 52.932 | 49.192 | 48.977 | 49.761 | 55.043 | 56.638 | 62.619 | 59.807 | 58.545 | 54.119 | 52.177 | 43.614 | 31.282 | 32.757 | 39.081 | 38.159 | 40.753 | 41.145 | 53.507 | 56.250 | 62.078 | 77.367 | 77.834 | 55.532 |
| 05-Sep-09 | 61.407 | 62.516 | 61.828 | 59.829 | 59.173 | 65.000 | 59.603 | 60.338 | 37.394 | 29.776 | 36.171 | 29.020 | 20.425 | 18.773 | 23.270 | 22.953 | 25.577 | 30.062 | 48.780 | 63.099 | 57.497 | 87.706 | 81.030 | 64.776 |
| 06-Sep-09 | 57.209 | 54.494 | 51.817 | 51.095 | 51.151 | 50.966 | 49.208 | 40.671 | 37.909 | 25.143 | 21.156 | 21.590 | 16.737 | 16.756 | 23.241 | 23.382 | 26.770 | 35.258 | 55.127 | 68.699 | 72.030 | 74.182 | 71.034 | 58.060 |
| 07-Sep-09 | 56.913 | 54.851 | 55.039 | 55.136 | 58.890 | 68.497 | 73.862 | 69.228 | 68.979 | 59.810 | 50.886 | 47.264 | 37.648 | 37.823 | 50.514 | 47.231 | 53.767 | 63.587 | 60.338 | 61.260 | 66.365 | 80.921 | 86.824 | 62.877 |
| 08-Sep-09 | 72.258 | 61.061 | 59.885 | 59.394 | 62.093 | 72.961 | 78.146 | 74.682 | 73.211 | 63.941 | 54.807 | 47.995 | 34.860 | 37.290 | 49.556 | 50.672 | 68.554 | 74.866 | 64.645 | 67.418 | 65.375 | 89.079 | 88.524 | 61.187 |
| 09-Sep-09 | 55.165 | 52.642 | 52.580 | 52.521 | 55.023 | 66.482 | 73.123 | 71.561 | 81.582 | 80.997 | 70.073 | 53.861 | 44.882 | 40.754 | 41.748 | 62.099 | 73.915 | 74.456 | 63.607 | 62.458 | 75.527 | 92.629 | 98.190 | 73.475 |
| 10-Sep-09 | 55.980 | 54.473 | 53.572 | 53.081 | 56.496 | 73.722 | 78.984 | 72.299 | 71.575 | 69.850 | 61.681 | 51.135 | 45.424 | 34.375 | 38.648 | 56.234 | 78.818 | 79.842 | 69.408 | 66.413 | 65.591 | 83.230 | 90.590 | 64.220 |
| 11-Sep-09 | 56.744 | 54.224 | 53.176 | 53.189 | 55.134 | 68.590 | 78.950 | 77.632 | 84.785 | 77.370 | 61.065 | 48.492 | 39.859 | 34.834 | 32.463 | 44.250 | 65.573 | 84.718 | 72.556 | 54.918 | 73.576 | 93.547 | 90.920 | 65.560 |
| 12-Sep-09 | 60.389 | 58.482 | 57.035 | 57.063 | 57.099 | 61.268 | 68.862 | 58.873 | 44.472 | 44.038 | 46.931 | 42.716 | 31.775 | 23.165 | 23.698 | 30.695 | 30.597 | 30.635 | 47.240 | 53.827 | 58.983 | 77.570 | 88.926 | 69.451 |
| 13-Sep-09 | 57.987 | 56.792 | 56.322 | 52.909 | 50.461 | 48.766 | 45.896 | 39.460 | 38.898 | 40.823 | 31.236 | 33.701 | 35.964 | 40.291 | 33.936 | 31.361 | 30.537 | 30.517 | 60.416 | 68.162 | 70.317 | 62.764 | 81.024 | 54.967 |
| 14-Sep-09 | 40.470 | 32.264 | 32.527 | 32.055 | 34.131 | 33.236 | 33.173 | 31.166 | 38.834 | 31.558 | 35.055 | 39.342 | 30.526 | 28.337 | 28.554 | 36.463 | 40.300 | 44.350 | 59.404 | 64.225 | 50.735 | 65.724 | 57.157 | 57.724 |
| 15-Sep-09 | 60.453 | 55.638 | 52.613 | 54.538 | 54.886 | 48.656 | 45.405 | 41.657 | 39.738 | 42.411 | 39.285 | 27.625 | 24.425 | 16.911 | 16.917 | 23.175 | 27.422 | 34.845 | 46.498 | 48.097 | 52.001 | 79.953 | 77.929 | 54.133 |
| 16-Sep-09 | 53.492 | 52.766 | 51.618 | 51.149 | 53.080 | 57.127 | 59.999 | 67.367 | 66.440 | 60.305 | 58.508 | 41.964 | 39.237 | 58.201 | 57.437 | 57.929 | 73.862 | 79.418 | 66.864 | 66.424 | 63.289 | 86.299 | 78.537 | 60.315 |
| 17-Sep-09 | 53.914 | 52.839 | 51.784 | 52.294 | 54.042 | 61.301 | 76.041 | 73.790 | 73.843 | 68.898 | 66.704 | 43.800 | 36.750 | 44.258 | 46.038 | 55.921 | 76.361 | 78.074 | 61.439 | 64.887 | 70.518 | 97.723 | 70.257 | 58.210 |
| 18-Sep-09 | 58.159 | 49.936 | 49.621 | 48.042 | 51.873 | 66.475 | 63.848 | 57.794 | 48.815 | 35.006 | 29.711 | 31.202 | 25.314 | 27.644 | 30.467 | 30.152 | 24.452 | 24.508 | 55.574 | 62.873 | 64.919 | 79.929 | 96.829 | 63.116 |
| 19-Sep-09 | 41.540 | 41.173 | 40.457 | 40.287 | 37.632 | 20.880 | 12.398 | 11.293 | 14.776 | 15.276 | 13.271 | 11.226 | 10.292 | 9.849  | 8.497  | 8.737  | 5.440  | 8.250  | 28.757 | 25.304 | 18.485 | 18.807 | 20.672 | 42.628 |
| 20-Sep-09 | 23.432 | 5.502  | 3.316  | 3.361  | 1.564  | 2.523  | 5.018  | 7.925  | 9.738  | 13.026 | 15.331 | 16.499 | 17.489 | 9.364  | 5.533  | 5.062  | 3.278  | 3.388  | 5.824  | 6.174  | 7.592  | 6.441  | 15.328 | 24.373 |
| 21-Sep-09 | 7.356  | 7.170  | 6.998  | 4.639  | 6.765  | 12.493 | 14.224 | 23.436 | 29.875 | 32.937 | 29.687 | 24.974 | 20.667 | 22.411 | 25.300 | 25.497 | 20.613 | 19.949 | 36.110 | 38.303 | 32.440 | 28.961 | 36.812 | 24.739 |
| 22-Sep-09 | 42.777 | 38.250 | 37.717 | 32.469 | 36.109 | 43.497 | 35.403 | 35.498 | 38.096 | 34.851 | 40.207 | 37.506 | 35.553 | 34.760 | 26.520 | 27.179 | 24.308 | 22.624 | 32.560 | 29.711 | 24.962 | 32.627 | 53.713 | 41.610 |
| 23-Sep-09 | 43.173 | 42.301 | 41.954 | 39.298 | 43.997 | 59.745 | 48.453 | 51.132 | 47.778 | 39.946 | 33.898 | 31.309 | 28.287 | 28.754 | 28.725 | 29.348 | 34.862 | 29.950 | 38.129 | 30.542 | 33.394 | 45.385 | 75.507 | 50.742 |
| 24-Sep-09 | 46.418 | 42.520 | 41.627 | 39.898 | 45.266 | 61.920 | 63.749 | 52.912 | 28.887 | 22.116 | 23.136 | 24.570 | 19.929 | 20.248 | 20.546 | 18.397 | 16.848 | 19.101 | 31.432 | 31.171 | 26.722 | 33.641 | 59.038 | 51.973 |
| 25-Sep-09 | 34.718 | 15.398 | 14.028 | 14.948 | 16.659 | 27.315 | 30.000 | 30.158 | 29.848 | 31.420 | 26.340 | 24.436 | 21.167 | 22.346 | 24.406 | 24.446 | 20.238 | 20.935 | 30.177 | 31.917 | 28.479 | 28.392 | 27.584 | 23.633 |
| 26-Sep-09 | 21.943 | 19.200 | 19.366 | 18.380 | 18.873 | 19.031 | 16.732 | 19.116 | 18.324 | 14.076 | 11.556 | 11.981 | 11.039 | 10.616 | 12.404 | 13.765 | 11.158 | 12.639 | 25.703 | 28.377 | 19.266 | 15.130 | 22.695 | 21.011 |
| 27-Sep-09 | 18.033 | 17.045 | 16.472 | 16.370 | 15.619 | 14.551 | 11.728 | 8.223  | 10.826 | 8.099  | 8.482  | 9.020  | 9.657  | 9.222  | 9.238  | 9.300  | 8.829  | 7.362  | 10.472 | 11.265 | 8.859  | 9.577  | 25.822 | 21.925 |
| 28-Sep-09 | 19.095 | 17.440 | 16.095 | 15.680 | 20.722 | 26.057 | 24.095 | 27.501 | 37.941 | 38.195 | 32.472 | 31.721 | 30.824 | 30.525 | 31.211 | 34.288 | 31.608 | 29.698 | 42.953 | 44.128 | 31.826 | 29.049 | 38.089 | 29.557 |
| 29-Sep-09 | 21.580 | 20.741 | 20.240 | 20.053 | 20.429 | 27.545 | 26.399 | 30.595 | 38.517 | 38.430 | 44.273 | 32.467 | 26.072 | 28.903 | 29.969 | 29.606 | 31.581 | 25.264 | 42.960 | 44.431 | 32.162 | 31.295 | 34.134 | 27.626 |
| 30-Sep-09 | 22.577 | 21.568 | 17.883 | 17.034 | 18.396 | 25.582 | 27.021 | 29.564 | 39.728 | 38.101 | 37.802 | 32.596 | 28.104 | 27.067 | 28.764 | 28.579 | 27.213 | 28.938 | 39.351 | 41.113 | 34.274 | 29.667 | 38.803 | 30.852 |

|  |    |        |
|--|----|--------|
| Precio mínimo de la serie              | \$ | 1.564  |
| Precio máximo de la serie              | \$ | 98.190 |
| Precio promedio aritmético de la serie | \$ | 42.334 |

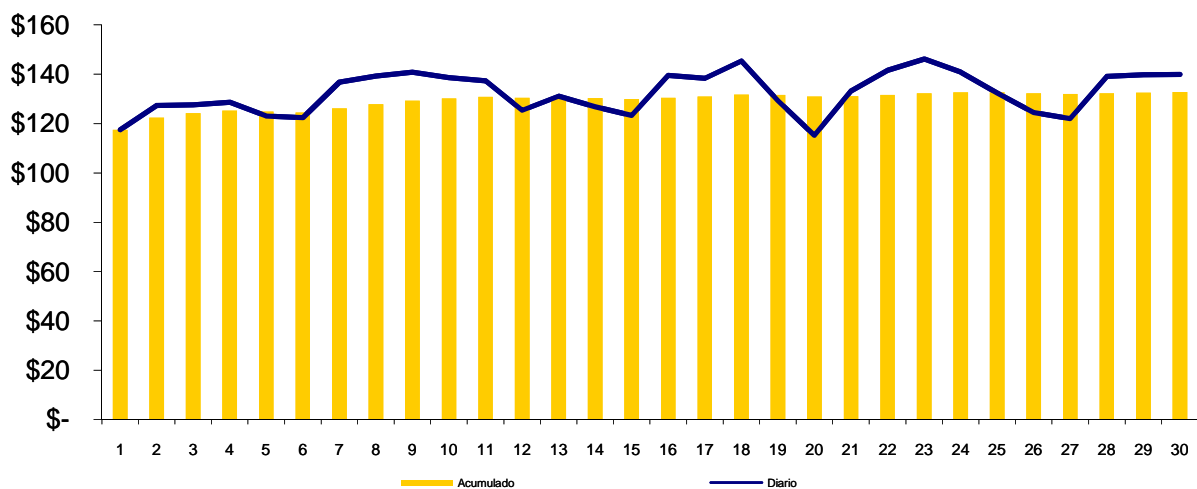
## Precios MRS = SIS+EST (\$/MWh)

| FECHA     | 0       | 1       | 2       | 3       | 4       | 5       | 6       | 7       | 8       | 9       | 10      | 11      | 12      | 13      | 14      | 15      | 16      | 17      | 18      | 19      | 20      | 21      | 22      | 23      |
|-----------|---------|---------|---------|---------|---------|---------|---------|---------|---------|---------|---------|---------|---------|---------|---------|---------|---------|---------|---------|---------|---------|---------|---------|---------|
| 01-Sep-09 | 105.307 | 98.303  | 97.789  | 98.020  | 98.087  | 97.149  | 107.564 | 105.384 | 119.876 | 132.882 | 132.591 | 132.118 | 139.359 | 141.420 | 136.868 | 137.349 | 129.940 | 125.178 | 132.260 | 138.335 | 129.738 | 130.116 | 122.387 | 111.127 |
| 02-Sep-09 | 118.818 | 118.609 | 113.637 | 119.078 | 117.552 | 118.237 | 124.582 | 118.229 | 134.262 | 136.867 | 138.654 | 137.563 | 147.651 | 145.679 | 137.408 | 139.874 | 136.377 | 131.655 | 137.137 | 140.896 | 143.028 | 145.406 | 143.697 | 118.362 |
| 03-Sep-09 | 120.220 | 118.134 | 116.243 | 114.048 | 119.901 | 122.684 | 125.840 | 121.095 | 141.279 | 141.462 | 137.908 | 136.949 | 144.095 | 144.568 | 139.946 | 141.387 | 140.194 | 130.000 | 140.712 | 145.048 | 143.762 | 149.277 | 145.517 | 127.523 |
| 04-Sep-09 | 117.985 | 114.243 | 114.029 | 114.799 | 120.094 | 121.692 | 130.015 | 132.210 | 137.743 | 138.722 | 144.177 | 142.515 | 141.526 | 143.044 | 136.386 | 134.556 | 131.252 | 127.049 | 137.506 | 142.545 | 143.888 | 146.220 | 143.533 | 120.935 |
| 05-Sep-09 | 126.460 | 127.567 | 126.880 | 124.867 | 124.224 | 130.054 | 126.999 | 132.741 | 116.592 | 114.379 | 128.171 | 127.921 | 130.669 | 129.060 | 120.575 | 119.350 | 116.076 | 115.966 | 132.779 | 149.394 | 139.307 | 156.559 | 146.729 | 130.179 |
| 06-Sep-09 | 122.212 | 119.495 | 116.819 | 116.093 | 116.152 | 115.970 | 114.204 | 113.674 | 112.907 | 121.146 | 118.156 | 118.591 | 126.741 | 127.253 | 115.246 | 115.379 | 118.769 | 118.262 | 137.126 | 150.694 | 154.030 | 146.185 | 136.033 | 123.063 |
| 07-Sep-09 | 121.916 | 119.852 | 120.041 | 120.134 | 123.891 | 133.501 | 138.858 | 142.231 | 143.977 | 155.813 | 147.886 | 144.265 | 147.652 | 148.320 | 140.519 | 137.228 | 143.766 | 146.591 | 142.337 | 143.255 | 148.365 | 152.924 | 151.823 | 127.880 |
| 08-Sep-09 | 135.581 | 124.382 | 123.207 | 122.712 | 121.534 | 137.405 | 144.982 | 144.155 | 147.019 | 148.844 | 149.487 | 142.976 | 145.284 | 147.707 | 141.521 | 142.379 | 157.453 | 158.050 | 154.474 | 157.143 | 148.005 | 158.882 | 152.663 | 125.350 |
| 09-Sep-09 | 118.438 | 115.923 | 115.862 | 115.799 | 117.984 | 130.886 | 139.919 | 140.994 | 152.260 | 155.080 | 154.053 | 149.862 | 142.986 | 151.171 | 152.153 | 153.806 | 154.314 | 157.640 | 151.606 | 155.553 | 158.157 | 162.432 | 162.329 | 137.638 |
| 10-Sep-09 | 119.263 | 117.754 | 116.854 | 116.359 | 119.457 | 138.126 | 145.780 | 141.732 | 142.253 | 143.933 | 145.661 | 148.636 | 144.208 | 144.902 | 149.183 | 148.331 | 159.217 | 163.026 | 157.407 | 159.508 | 148.221 | 153.033 | 154.729 | 128.383 |
| 11-Sep-09 | 120.027 | 117.505 | 116.458 | 116.467 | 118.095 | 132.994 | 145.746 | 147.065 | 155.463 | 151.453 | 145.045 | 145.943 | 138.613 | 145.351 | 142.988 | 136.337 | 145.972 | 167.902 | 160.555 | 148.013 | 156.206 | 163.350 | 155.059 | 129.723 |
| 12-Sep-09 | 121.922 | 120.013 | 118.567 | 118.591 | 118.630 | 120.802 | 125.058 | 127.076 | 115.000 | 119.441 | 132.511 | 140.757 | 131.119 | 133.252 | 133.723 | 125.912 | 121.976 | 120.069 | 137.249 | 146.902 | 141.353 | 144.553 | 146.545 | 133.094 |
| 13-Sep-09 | 120.660 | 119.463 | 118.994 | 115.577 | 113.132 | 118.440 | 115.562 | 115.143 | 114.736 | 116.666 | 127.586 | 132.542 | 134.808 | 150.508 | 144.111 | 127.008 | 126.186 | 126.171 | 156.575 | 164.317 | 165.967 | 158.907 | 144.493 | 120.440 |
| 14-Sep-09 | 109.103 | 100.915 | 101.179 | 100.703 | 102.782 | 108.890 | 108.819 | 125.329 | 132.992 | 125.751 | 129.405 | 138.183 | 129.370 | 138.714 | 138.939 | 135.300 | 138.979 | 143.004 | 158.053 | 162.870 | 149.385 | 140.387 | 126.756 | 126.357 |
| 15-Sep-09 | 124.936 | 120.119 | 117.095 | 119.016 | 119.367 | 121.640 | 118.381 | 114.850 | 113.086 | 115.764 | 120.635 | 119.976 | 117.129 | 127.288 | 127.302 | 116.022 | 120.111 | 127.459 | 140.697 | 142.312 | 144.651 | 144.566 | 142.408 | 118.616 |
| 16-Sep-09 | 117.975 | 117.247 | 116.100 | 115.627 | 117.561 | 125.911 | 132.975 | 140.560 | 146.788 | 140.558 | 138.978 | 152.395 | 149.691 | 152.978 | 151.822 | 150.776 | 162.151 | 167.632 | 159.063 | 158.649 | 155.539 | 150.912 | 143.016 | 124.798 |
| 17-Sep-09 | 118.397 | 117.320 | 116.266 | 116.772 | 118.523 | 130.085 | 149.017 | 146.983 | 154.191 | 149.151 | 147.174 | 154.231 | 147.204 | 139.035 | 140.423 | 148.768 | 164.650 | 166.288 | 153.638 | 157.112 | 162.768 | 142.166 | 134.736 | 122.693 |
| 18-Sep-09 | 122.617 | 114.399 | 114.084 | 112.499 | 116.329 | 133.467 | 152.235 | 157.081 | 158.020 | 152.892 | 159.510 | 160.997 | 155.119 | 157.447 | 160.270 | 159.955 | 149.449 | 142.507 | 161.776 | 164.668 | 159.716 | 164.333 | 161.284 | 127.578 |
| 19-Sep-09 | 116.608 | 116.246 | 115.530 | 115.354 | 112.698 | 109.552 | 111.465 | 121.860 | 135.371 | 144.862 | 145.360 | 143.311 | 142.387 | 141.942 | 140.590 | 140.830 | 137.527 | 136.339 | 151.149 | 145.389 | 138.572 | 124.601 | 113.757 | 117.720 |
| 20-Sep-09 | 98.505  | 87.573  | 92.388  | 92.429  | 90.635  | 92.197  | 95.084  | 98.498  | 102.326 | 105.619 | 107.421 | 108.590 | 109.583 | 129.451 | 137.628 | 137.149 | 135.367 | 135.482 | 138.213 | 138.259 | 138.682 | 137.234 | 105.417 | 99.466  |
| 21-Sep-09 | 82.369  | 82.181  | 82.070  | 89.707  | 91.836  | 97.567  | 105.290 | 123.009 | 150.463 | 161.530 | 159.777 | 157.065 | 152.761 | 154.498 | 157.395 | 157.584 | 152.702 | 148.043 | 156.499 | 158.388 | 152.530 | 147.754 | 111.901 | 99.832  |
| 22-Sep-09 | 117.790 | 113.261 | 112.789 | 117.537 | 121.180 | 128.571 | 126.469 | 135.071 | 148.684 | 155.444 | 165.297 | 167.597 | 167.647 | 166.847 | 158.615 | 159.266 | 152.397 | 150.628 | 160.559 | 157.706 | 145.052 | 143.420 | 128.802 | 116.703 |
| 23-Sep-09 | 118.176 | 117.302 | 116.956 | 114.296 | 118.998 | 134.749 | 137.949 | 152.135 | 156.776 | 159.949 | 163.898 | 161.310 | 160.381 | 160.841 | 160.820 | 161.435 | 166.951 | 158.954 | 167.128 | 159.537 | 158.394 | 156.178 | 150.506 | 125.745 |
| 24-Sep-09 | 121.829 | 117.929 | 117.037 | 115.304 | 120.675 | 137.332 | 139.353 | 154.323 | 147.293 | 149.527 | 155.544 | 156.979 | 152.431 | 152.743 | 153.049 | 150.892 | 149.345 | 148.513 | 160.839 | 160.574 | 156.330 | 149.052 | 134.445 | 127.384 |
| 25-Sep-09 | 110.149 | 90.827  | 89.458  | 90.374  | 92.088  | 107.747 | 110.424 | 122.609 | 140.294 | 151.871 | 154.788 | 156.885 | 153.619 | 154.791 | 156.859 | 156.891 | 152.685 | 149.387 | 158.624 | 160.360 | 156.927 | 143.843 | 103.031 | 99.064  |
| 26-Sep-09 | 97.354  | 94.609  | 94.776  | 93.786  | 94.282  | 94.593  | 106.836 | 119.227 | 133.790 | 139.517 | 143.904 | 144.470 | 143.461 | 143.031 | 141.827 | 142.180 | 139.625 | 141.131 | 156.080 | 158.750 | 149.764 | 135.681 | 113.042 | 96.422  |
| 27-Sep-09 | 93.444  | 92.454  | 91.882  | 91.776  | 91.028  | 90.113  | 86.832  | 118.334 | 131.292 | 136.540 | 136.830 | 137.509 | 138.079 | 137.637 | 137.661 | 137.725 | 137.356 | 135.854 | 142.849 | 143.638 | 141.357 | 135.148 | 101.169 | 97.336  |
| 28-Sep-09 | 94.596  | 92.939  | 91.595  | 91.176  | 96.221  | 102.009 | 113.689 | 127.012 | 148.527 | 161.696 | 164.700 | 163.370 | 162.266 | 161.960 | 159.684 | 162.583 | 160.005 | 158.140 | 172.270 | 173.441 | 161.264 | 149.970 | 124.436 | 105.058 |
| 29-Sep-09 | 97.021  | 96.190  | 95.690  | 95.499  | 95.878  | 103.147 | 116.543 | 133.116 | 151.893 | 158.881 | 170.031 | 162.966 | 158.504 | 161.328 | 162.402 | 162.031 | 161.058 | 154.766 | 172.337 | 173.804 | 160.660 | 154.276 | 130.821 | 103.077 |
| 30-Sep-09 | 98.028  | 97.017  | 93.333  | 92.480  | 93.845  | 101.034 | 117.285 | 132.205 | 153.224 | 161.672 | 165.990 | 164.245 | 160.656 | 159.612 | 161.317 | 161.124 | 158.810 | 158.390 | 168.798 | 170.556 | 163.722 | 155.118 | 134.250 | 106.303 |

|  |    |        |
|--|----|--------|
| Precio mínimo de la serie              | \$ | 82.07  |
| Precio máximo de la serie              | \$ | 173.80 |
| Precio promedio aritmético de la serie | \$ | 134.53 |
| Precio promedio ponderado              | \$ | 132.77 |

Precios Promedios (\$/MWh)

| FECHA  | Diario    | Acumulado |
|--------|-----------|-----------|
| 01-Sep | \$ 117.51 | \$ 117.51 |
| 02-Sep | \$ 127.29 | \$ 122.39 |
| 03-Sep | \$ 127.65 | \$ 124.17 |
| 04-Sep | \$ 128.65 | \$ 125.25 |
| 05-Sep | \$ 122.99 | \$ 124.84 |
| 06-Sep | \$ 122.46 | \$ 124.51 |
| 07-Sep | \$ 136.82 | \$ 126.23 |
| 08-Sep | \$ 139.34 | \$ 127.88 |
| 09-Sep | \$ 140.86 | \$ 129.32 |
| 10-Sep | \$ 138.62 | \$ 130.25 |
| 11-Sep | \$ 137.32 | \$ 130.88 |
| 12-Sep | \$ 125.43 | \$ 130.50 |
| 13-Sep | \$ 131.08 | \$ 130.54 |
| 14-Sep | \$ 126.87 | \$ 130.29 |
| 15-Sep | \$ 123.33 | \$ 129.87 |
| 16-Sep | \$ 139.60 | \$ 130.48 |
| 17-Sep | \$ 138.39 | \$ 130.95 |
| 18-Sep | \$ 145.39 | \$ 131.75 |
| 19-Sep | \$ 129.27 | \$ 131.63 |
| 20-Sep | \$ 115.31 | \$ 130.93 |
| 21-Sep | \$ 133.22 | \$ 131.04 |
| 22-Sep | \$ 141.60 | \$ 131.56 |
| 23-Sep | \$ 146.21 | \$ 132.23 |
| 24-Sep | \$ 140.79 | \$ 132.61 |
| 25-Sep | \$ 132.45 | \$ 132.61 |
| 26-Sep | \$ 124.53 | \$ 132.31 |
| 27-Sep | \$ 122.00 | \$ 131.97 |
| 28-Sep | \$ 139.18 | \$ 132.24 |
| 29-Sep | \$ 139.84 | \$ 132.51 |
| 30-Sep | \$ 139.98 | \$ 132.77 |



## Sistema de Transmisión ENS, Pérdidas e interrupciones

| Rubros                        | Septiembre 2009 | % 1/    | Variaciones <sup>2/</sup> |       | Acumulado Anual <sup>2/</sup> |        |
|-------------------------------|-----------------|---------|---------------------------|-------|-------------------------------|--------|
|                               |                 |         | Mensual                   | Anual | Acumulada                     | Var. % |
| Energía no Servida (MWh)      | 587.31          | 0.13%   | 49.02                     | 34.98 | 3,764.13                      | -15.40 |
| Pérdidas de Transmisión (GWh) | 7.8             |         |                           |       |                               |        |
| Interrupciones de Servicio    | 289             | eventos |                           |       |                               |        |

<sup>1/</sup> Energía no Servida como porcentaje de demanda

<sup>2/</sup> Para el detalle de los períodos ver el apartado de Referencias de la Pág. 3.

| Interrupciones         |            |
|------------------------|------------|
| Voltaje                | Eventos    |
| Circuitos de 23 kV     | 8          |
| Circuitos de 34.5 kV   | 21         |
| Circuitos de 46 kV     | 234        |
| Línea de 115 kV        | 25         |
| Línea de Interconexión | 1          |
| <b>Total</b>           | <b>289</b> |

|  |            |
|--|------------|
| Falla en líneas de transmisión                     | 17         |
| Mantenimiento en línea de transmisión              | 8          |
| Falla en circuitos de distribución                 | 169        |
| Mantenimiento líneas de distribución               | 94         |
| Fallas líneas de interconexión                     | 0          |
| Mantenimiento línea de interconexión <sup>1/</sup> | 1          |
| Actuación del EDLI                                 | 0          |
| <b>Total</b>                                       | <b>289</b> |

<sup>1/</sup> Mantenimiento o por solicitud de líneas de interconexión Guatemala y Honduras

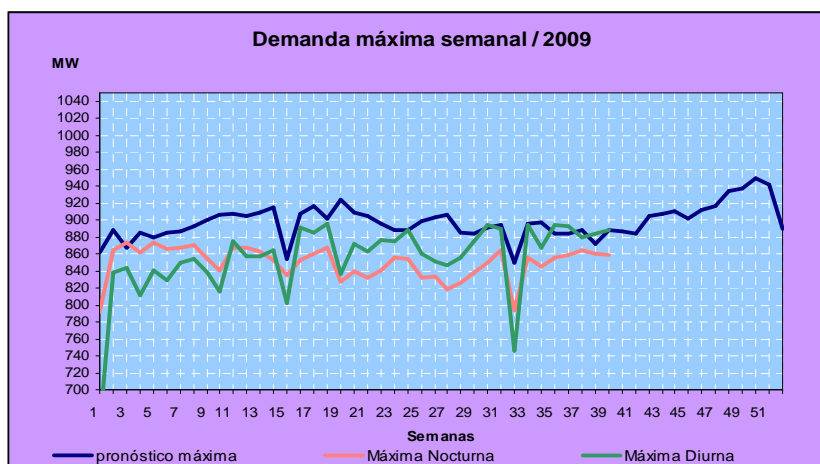
## Otras estadísticas Generación obligada

| Rubros                      | Septiembre 2009  | Acumulado Anual <sup>1/</sup> |        | Últimos tres meses <sup>1/</sup> |        | Últimos 12 meses <sup>1/</sup> |        |
|-----------------------------|------------------|-------------------------------|--------|----------------------------------|--------|--------------------------------|--------|
|                             | MWh              | MWh                           | Var. % | MWh                              | Var. % | MWh                            | Var. % |
| Servicio de CAG             | 11,144.1         | 40,997.6                      | 0.0    | 7,152.7                          |        | 4,670.5                        | 747.4  |
| Sustitución                 | 7,380.6          | 97,658.3                      | 105.0  | 12,816.1                         | 178.9  | 9,198.2                        | 84.7   |
| Calidad de servicio         | -                | -                             | -      | -                                | -      | -                              | 0.0    |
| Estabilización de precios   | 225,356.7        | 2,143,414.2                   | -      | 213,458.0                        | -      | 212,858.1                      | 0.0    |
| Sustitución con Equipos RFC | 1,491.3          | 6,832.5                       | (76.2) | 1,251.9                          | 53.0   | 645.1                          | -82.3  |
| <b>Total</b>                | <b>245,372.7</b> | <b>2,288,902.6</b>            |        |                                  |        |                                |        |

<sup>1/</sup> Para el detalle de los períodos ver el apartado de Referencias de la Pág. 3.

## Demanda Máxima de Potencia

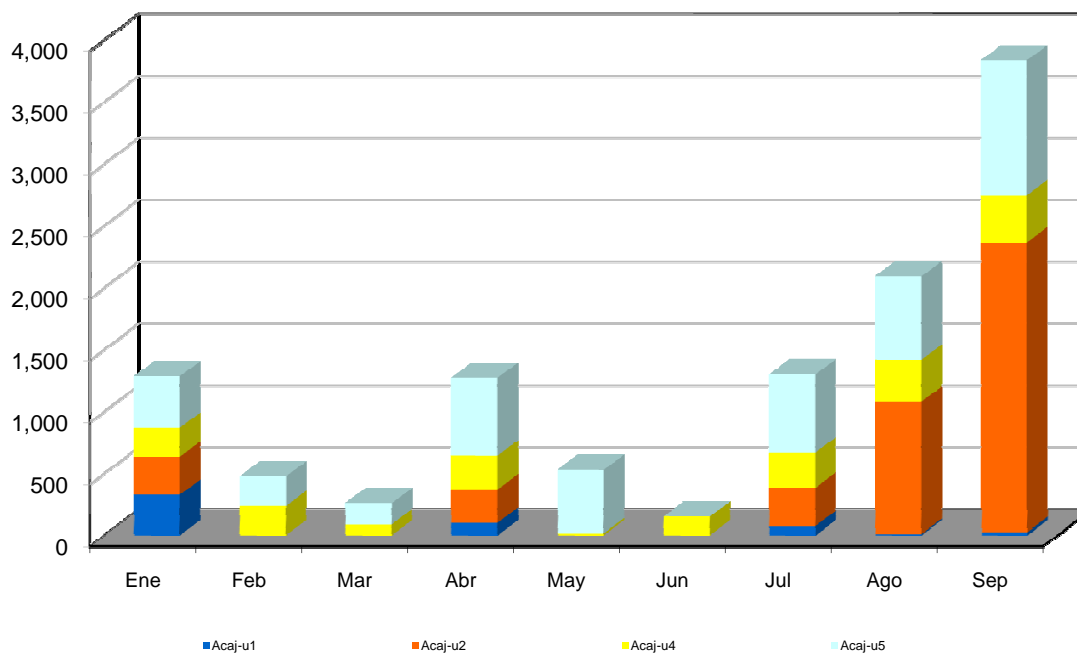
| Demanda | Máxima          | Nocturna        | Mínima         |
|---------|-----------------|-----------------|----------------|
| Ene     | 874             | 844             | 354            |
|         | 28-Ene-09 19:00 | 13-Ene-09 14:30 | 2-Ene-09 3:30  |
| Feb     | 870             | 855             | 396            |
|         | 17-Feb-09 19:00 | 19-Feb-09 14:30 | 8-Feb-09 3:00  |
| Mar     | 876             | 868             | 407            |
|         | 10-Mar-09 15:00 | 10-Mar-09 19:00 | 16-Mar-09 2:30 |
| Abr     | 895             | 868             | 392            |
|         | 28-Abr-09 14:30 | 27-Abr-09 19:00 | 11-Abr-09 3:30 |
| May     | 876             | 840             | 409            |
|         | 27-May-09 0:00  | 13-May-09 0:00  | 2-May-09 0:00  |
| Jun     | 888             | 855             | 411            |
|         | 11-Jun-09 0:00  | 3-Jun-09 0:00   | 1-Jun-09 0:00  |
| Jul     | 895             | 865             | 415            |
|         | 20-Jul-09 15:00 | 28-Jul-09 19:30 | 12-Jul-09 5:30 |
| Ago     | 894             | 856             | 398            |
|         | 14-Ago-09 15:00 | 27-Ago-09 19:00 | 2-Ago-09 4:30  |
| Sep     | 890             | 864             | 415            |
|         | 2-Sep-09 14:30  | 17-Sep-09 19:00 | 27-Sep-09 3:30 |
|         |                 |                 |                |
|         |                 |                 |                |
|         |                 |                 |                |
|         |                 |                 |                |



## Reserva Fría por Confiabilidad

| Mes    | Pi (\$/MWh) | Var.% Mensual | Inyecciones por planta (MWh) |          |         |         |          | Inyección Total (MWh) | % RFC |
|--------|-------------|---------------|------------------------------|----------|---------|---------|----------|-----------------------|-------|
|        |             |               | Acaj-u1                      | Acaj-u2  | Acaj-u4 | Acaj-u5 | Total    |                       |       |
| Ene-08 | 4.71        | ---           | 6,798.4                      | 3,495.2  | 428.4   | 2,713.6 | 13,435.6 | 458,244.4             | 2.93  |
| Feb-08 | 4.47        | -0.1          | 6,645.4                      | 1,775.6  | 439.1   | 1,839.0 | 10,699.2 | 447,347.1             | 2.39  |
| Mar-08 | 3.62        | -0.2          | 3,476.0                      | 2,515.0  | 441.7   | 2,143.3 | 8,576.0  | 464,813.1             | 1.85  |
| Abr-08 | 3.18        | -0.1          | 10,038.4                     | 9,741.0  | 3,211.3 | 465.0   | 23,455.7 | 484,558.2             | 4.84  |
| May-08 | 6.08        | 0.9           | 12,253.8                     | 11,753.2 | 3,593.6 | 0.0     | 27,600.5 | 494,234.7             | 5.58  |
| Jun-08 | 8.68        | 0.4           | 7,657.8                      | 8,149.7  | 1,182.1 | 0.0     | 16,989.7 | 494,234.7             | 3.44  |
| Jul-08 | 4.42        | -0.5          | 3,151.8                      | 3,273.6  | 463.1   | 0.0     | 6,888.5  | 490,747.0             | 1.40  |
| Ago-08 | 1.77        | -0.6          | 0.0                          | 0.0      | 0.0     | 0.0     | 0.0      | 491,542.1             | 0.00  |
| Sep-08 | 0.00        | -1.0          | 0.0                          | 0.0      | 0.0     | 0.0     | 0.0      | 480,342.5             | 0.00  |
| Oct-08 | 0.41        | ---           | 226.1                        | 276.4    | 31.8    | 0.0     | 534.3    | 491,940.4             | 0.11  |
| Nov-08 | 0.05        | -0.9          | 0.0                          | 0.0      | 17.7    | 0.0     | 17.7     | 444,973.5             | 0.00  |
| Dic-08 | 1.60        | 31.0          | 54.2                         | 0.0      | 313.3   | 142.7   | 510.3    | 460,442.6             | 0.11  |
| Ene-09 | 1.52        | -0.1          | 329.3                        | 305.9    | 234.5   | 415.9   | 1,285.6  | 472,520.5             | 0.27  |
| Feb-09 | 1.92        | 0.3           | 0.0                          | 0.0      | 239.6   | 238.0   | 477.5    | 435,086.5             | 0.11  |
| Mar-09 | 2.18        | 0.1           | 0.0                          | 0.0      | 89.2    | 173.0   | 262.3    | 485,378.2             | 0.05  |
| Abr-09 | 2.22        | 1.8           | 102.5                        | 270.1    | 272.1   | 629.0   | 1,273.6  | 461,950.9             | 0.28  |
| May-09 | 2.11        | -5.0          | 0.0                          | 0.0      | 15.9    | 514.5   | 530.4    | 473,374.0             | 0.11  |
| Jun-09 | 2.17        | 2.8           | 0.0                          | 0.0      | 152.4   | 0.0     | 152.4    | 474,451.9             | 0.03  |
| Jul-09 | 2.19        | 0.9           | 76.8                         | 309.2    | 283.8   | 630.5   | 1,300.3  | 491,801.7             | 0.26  |
| Ago-09 | 2.15        | -1.8          | 11.2                         | 1,070.5  | 336.6   | 673.9   | 2,092.2  | 477,722.9             | 0.44  |
| Sep-09 | 1.93        | -10.2         | 26.9                         | 2,338.2  | 381.9   | 1,088.1 | 3,835.0  | 469,415.1             | 0.82  |

## MWh





## Condición de Reserva

Reserva Rodante y Reserva Fría en Demanda Máxima (MW)  
Sep-2009

| Día | Cap. Disponible | Gen. Despachada | Demanda + Perdidas | Intercambio Neto * | Reserva Rodante | Reserva Fria |
|-----|-----------------|-----------------|--------------------|--------------------|-----------------|--------------|
| 1   | 1134            | 817             | 838                | 21                 | 55              | 262          |
| 2   | 1114            | 876             | 890                | 14                 | 38              | 200          |
| 3   | 1079            | 850             | 869                | 19                 | 61              | 168          |
| 4   | 1107            | 844             | 867                | 22                 | 43              | 220          |
| 5   | 983             | 781             | 801                | 20                 | 23              | 179          |
| 6   | 931             | 717             | 750                | 33                 | 70              | 144          |
| 7   | 1098            | 852             | 880                | 28                 | 63              | 183          |
| 8   | 1024            | 835             | 859                | 23                 | 46              | 142          |
| 9   | 1028            | 840             | 873                | 32                 | 116             | 71           |
| 10  | 1030            | 799             | 855                | 57                 | 64              | 167          |
| 11  | 1016            | 793             | 824                | 31                 | 106             | 117          |
| 12  | 978             | 735             | 757                | 23                 | 44              | 200          |
| 13  | 889             | 716             | 735                | 18                 | 39              | 134          |
| 14  | 986             | 792             | 810                | 17                 | 68              | 126          |
| 15  | 1006            | 752             | 755                | 4                  | 40              | 214          |
| 16  | 1037            | 829             | 883                | 54                 | 66              | 142          |
| 17  | 1044            | 780             | 851                | 71                 | 56              | 208          |
| 18  | 1059            | 833             | 854                | 21                 | 74              | 152          |
| 19  | 1000            | 737             | 753                | 16                 | 69              | 194          |
| 20  | 1109            | 717             | 724                | 7                  | 80              | 311          |
| 21  | 1104            | 865             | 864                | -1                 | 60              | 179          |
| 22  | 1080            | 867             | 870                | 3                  | 109             | 103          |
| 23  | 1076            | 864             | 876                | 11                 | 70              | 142          |
| 24  | 1125            | 857             | 848                | -10                | 84              | 184          |
| 25  | 1024            | 811             | 830                | 19                 | 81              | 132          |
| 26  | 1004            | 765             | 757                | -8                 | 46              | 194          |
| 27  | 1059            | 736             | 723                | -13                | 40              | 283          |
| 28  | 1058            | 822             | 854                | 32                 | 42              | 193          |
| 29  | 1082            | 844             | 862                | 18                 | 50              | 188          |
| 30  | 990             | 831             | 861                | 30                 | 61              | 98           |

\* Valor positivo significa Importación

## Interrupciones del servicio

| Entrega           | Fecha Inicio | Hora Inicio | Fecha Final | Hora Final | Duración | Rele     | Motivo  | MW    | KWh       | Responsable |
|-------------------|--------------|-------------|-------------|------------|----------|----------|---|-------|-----------|-------------|
| CLESA-ATEO(3-84)  | 01/09        | 21:36       | 01/09       | 22:02      | 26m      | 51       | FALLA EN LÍNEA / PRUEBA NEG. A LAS 21:37 H.   | 3.38  | 1,464.67  | CLESA       |
| EEO-15SE(4-83)    | 02/09        | 04:10       | 02/09       | 04:11      | 1m       | 51, 51N  | FALLA EN LÍNEA / INDICO 59N.  | 1.26  | 21.00     | EEO         |
| ANDA-SANA(4-85)   | 02/09        | 05:24       | 02/09       | 05:26      | 2m       | 51, 51N  | FALLA EN LÍNEA / INDICO 59N.  | 8.83  | 294.33    | ANDA        |
| ANDA-SANA(4-85)   | 02/09        | 08:57       | 02/09       | 10:43      | 1h 46m   | MANUAL   | SOLICITUD DE PM / TRABAJOS EN SUBESTACION PROPIA.   | 10.00 | 17,666.67 | ANDA        |
| DELSUR-SOYA(4-85) | 02/09        | 22:48       | 03/09       | 01:04      | 2h 16m   | 51, 51NS | FALLA EN LÍNEA / INDICO 59N, 22:50 H. PRUEBA (-) CARGA TRANS. AL 47-4-81.   | 0.29  | 778.17    | DELSUR      |
| CLESA-SONS(4-82)  | 03/09        | 01:07       | 03/09       | 01:12      | 5m       | MANUAL   | SOLICITUD DE DISTRIBUIDOR / RETORNAR CARGA TRANSFERIDA A INT. 13-4-81.  | 1.10  | 91.67     | CLESA       |
| CLESA-ACAJ(4-81)  | 03/09        | 01:07       | 03/09       | 01:12      | 5m       | MANUAL   | SOLICITUD DE DISTRIBUIDOR / NORMALIZAR CARGA DE INT. 41-4-82.   | 5.87  | 489.17    | CLESA       |
| DELSUR-TECO(4-81) | 04/09        | 00:01       | 04/09       | 00:06      | 5m       | 51       | FALLA EN LÍNEA / INDICO 59N, LLUVIA EN LA ZONA, TARDANZA DE CIERRE A SOLICITUD DE DELSUR.   | 3.44  | 286.67    | DELSUR      |
| CAESS-SRAF(4-82)  | 04/09        | 21:51       | 04/09       | 21:52      | 1m       | 51       | FALLA EN LÍNEA /  | 5.42  | 90.33     | CAESS       |
| CAESS-SRAF(4-82)  | 04/09        | 21:53       | 04/09       | 21:55      | 2m       | 51       | FALLA EN LÍNEA / LLUVIA EN LA ZONA.   | 5.40  | 180.00    | CAESS       |
| LAGEO-PEDR(4-81)  | 04/09        | 22:25       | 04/09       | 22:29      | 4m       | MANUAL   | CERO VOLTAJE / POR DISPARO DE LAS LINEAS SMAR-STOM Y NCUS-STOM, QUEDANDO EN CERO VOLTAJE EN STOM Y EPED.  | 8.56  | 570.67    | ETESAL      |
| CAESS-STOM(4-82)  | 04/09        | 22:25       | 04/09       | 22:29      | 4m       | MANUAL   | CERO VOLTAJE / POR DISPARO DE LAS LINEAS SMAR-STOM Y NCUS-STOM, QUEDANDO EN CERO VOLTAJE EN STOM Y EPED. CARGA TRANSFERIDA A SANT A LAS 22:27 H. / Carga reconectada a las 22:27 del 04-09-2009 | 7.80  | 260.00    | ETESAL      |
| DELSUR-STOM(4-81) | 04/09        | 22:25       | 04/09       | 22:29      | 4m       | MANUAL   | CERO VOLTAJE / POR DISPARO DE LAS LINEAS SMAR-STOM Y NCUS-STOM, QUEDANDO EN CERO VOLTAJE EN STOM Y EPED.  | 20.24 | 1,349.33  | ETESAL      |
| DELSUR-PEDR(4-82) | 04/09        | 22:25       | 04/09       | 22:29      | 4m       | MANUAL   | CERO VOLTAJE / POR DISPARO DE LAS LINEAS SMAR-STOM Y NCUS-STOM, QUEDANDO EN CERO VOLTAJE EN STOM Y EPED.  | 3.87  | 258.00    | ETESAL      |
| DELSUR-PEDR(4-83) | 04/09        | 22:25       | 04/09       | 22:29      | 4m       | MANUAL   | CERO VOLTAJE / POR DISPARO DE LAS LINEAS SMAR-STOM Y NCUS-STOM, QUEDANDO EN CERO VOLTAJE EN STOM Y EPED.  | 5.59  | 372.67    | ETESAL      |
| DELSUR-PEDR(4-84) | 04/09        | 22:25       | 04/09       | 22:29      | 4m       | MANUAL   | CERO VOLTAJE / POR DISPARO DE LAS LINEAS SMAR-STOM Y NCUS-STOM, QUEDANDO EN CERO VOLTAJE EN STOM Y EPED.  | 1.84  | 122.67    | ETESAL      |

## Interrupciones del servicio

| Entrega           | Fecha Inicio | Hora Inicio | Fecha Final | Hora Final | Duración | Rele     | Motivo   | MW    | KWh      | Responsable |
|-------------------|--------------|-------------|-------------|------------|----------|----------|--|-------|----------|-------------|
| DELSUR-PEDR(4-83) | 04/09        | 23:20       | 04/09       | 23:22      | 2m       | 51N      | FALLA EN LÍNEA / INDICO 59N.   | 4.30  | 143.33   | DELSUR      |
| CLESA-ACAJ(4-81)  | 05/09        | 13:58       | 05/09       | 14:01      | 3m       | 59N      | FALLA EN LÍNEA / PRUEBA (-) A LAS 13:59 HRS, OPERANDO RELE 51. CLESA DEJA SUB CARA SUCIA FUERA Y REPORTA LLUVIA CON VIENTOS EN ZONA.                         | 4.82  | 241.00   | CLESA       |
| EEO-SMIG(4-84)    | 05/09        | 16:34       | 05/09       | 16:36      | 2m       | MANUAL   | SOLICITUD DE DISTRIBUIDOR / PARA RETORNAR LA CARGA, HACIA EL INT.34-4-83.  | 11.00 | 366.67   | EEO         |
| CLESA-ATEO(3-84)  | 05/09        | 22:01       | 05/09       | 22:03      | 2m       | 51       | FALLA EN LÍNEA / FUERTE TORMENTA EN LA ZONA.   | 2.86  | 95.33    | CLESA       |
| CLESA-ACAJ(4-81)  | 05/09        | 23:40       | 05/09       | 23:42      | 2m       | 51       | FALLA EN LÍNEA / LLUVIA EN LA ZONA.INDICO 59N.   | 4.13  | 137.67   | CLESA       |
| CLESA-ACAJ(3-81)  | 05/09        | 23:40       | 05/09       | 23:43      | 3m       | 51       | FALLA EN LÍNEA / LLUVIA EN LA ZONA.  | 0.85  | 42.50    | CLESA       |
| u03-ACAJ(4-82)    | 05/09        | 23:40       | 05/09       | 23:43      | 3m       | 51NS     | FALLA EN LÍNEA / LLUVIA EN LA ZONA.INDICO 59N.   | 0.47  | 23.50    | u03         |
| CLESA-ACAJ(3-81)  | 06/09        | 00:29       | 06/09       | 00:31      | 2m       | 51       | FALLA EN LÍNEA / FUERTE LLUVIA.  | 0.50  | 16.67    | CLESA       |
| CLESA-ACAJ(4-81)  | 06/09        | 09:40       | 06/09       | 09:42      | 2m       | MANUAL   | MANTENIMIENTO PROGRAMADO / APERTURA PARA HACER MANIOBRAS POR TRABAJOS PROGRAMADOS, TRANSFIRIO PARTE DE LA CARGA AL 44-4-81 DE DELSUR, NO HAY CARGA AFECTADA. | 4.62  | 154.00   | CLESA       |
| LAGEO-PEDR(4-81)  | 06/09        | 14:16       | 06/09       | 14:21      | 5m       | MANUAL   | CERO VOLTAJE / DISPARO DEL TX. 115-46 KV. POR RELE DIFERENCIAL, DEJANDO EN CERO VOLTAJE LA BARRA DE 46 KV.   | 9.25  | 770.83   | ETESAL      |
| DELSUR-PEDR(4-82) | 06/09        | 14:16       | 06/09       | 14:21      | 5m       | MANUAL   | CERO VOLTAJE / DISPARO DEL TX. 115-46 KV. POR RELE DIFERENCIAL, DEJANDO EN CERO VOLTAJE LA BARRA DE 46 KV.   | 4.10  | 341.67   | ETESAL      |
| DELSUR-PEDR(4-83) | 06/09        | 14:16       | 06/09       | 14:21      | 5m       | MANUAL   | CERO VOLTAJE / DISPARO DEL TX. 115-46 KV. POR RELE DIFERENCIAL, DEJANDO EN CERO VOLTAJE LA BARRA DE 46 KV.   | 7.07  | 589.17   | ETESAL      |
| DELSUR-PEDR(4-84) | 06/09        | 14:16       | 06/09       | 14:21      | 5m       | MANUAL   | CERO VOLTAJE / DISPARO DEL TX. 115-46 KV. POR RELE DIFERENCIAL, DEJANDO EN CERO VOLTAJE LA BARRA DE 46 KV.   | 1.63  | 135.83   | ETESAL      |
| CLESA-ACAJ(4-81)  | 06/09        | 16:00       | 06/09       | 16:01      | 1m       | MANUAL   | MANTENIMIENTO PROGRAMADO / PARA NORMALIZAR LA CARGA.   | 3.93  | 65.50    | CLESA       |
| ANDA-SANA(4-85)   | 06/09        | 20:15       | 06/09       | 20:17      | 2m       | 51, 51NS | FALLA EN LÍNEA / INDICO 59N.   | 10.26 | 342.00   | ANDA        |
| EEO-SMIG(4-82)    | 06/09        | 21:30       | 06/09       | 21:48      | 18m      | 59N      | FALLA EN SUBESTACIONES / EXPLOSION DE TP PRINCIPAL DE BARRA A 46 KV.   | 11.49 | 3,447.00 | ETESAL      |
| EEO-SMIG(4-86)    | 06/09        | 21:30       | 06/09       | 21:50      | 20m      | 59N      | FALLA EN SUBESTACIONES / EXPLOSION DE TP PRINCIPAL DE BARRA A 46 KV.   | 9.32  | 3,106.67 | ETESAL      |
| EEO-SMIG(4-84)    | 06/09        | 21:30       | 06/09       | 21:49      | 19m      | 59N      | FALLA EN SUBESTACIONES / EXPLOSION DE TP PRINCIPAL DE BARRA A 46 KV.   | 9.67  | 3,062.17 | ETESAL      |
| EEO-SMIG(4-83)    | 06/09        | 21:30       | 06/09       | 21:49      | 19m      | 59N      | FALLA EN SUBESTACIONES / EXPLOSION DE TP PRINCIPAL DE BARRA A 46 KV.   | 5.96  | 1,887.33 | ETESAL      |

## Interrupciones del servicio

| Entrega           | Fecha Inicio | Hora Inicio | Fecha Final | Hora Final | Duración | Rele    | Motivo   | MW    | KWh       | Responsable |
|-------------------|--------------|-------------|-------------|------------|----------|---------|--|-------|-----------|-------------|
| EEO-SMIG(4-85)    | 06/09        | 21:30       | 06/09       | 21:50      | 20m      | 59N     | FALLA EN SUBESTACIONES / EXPLOSION DE TP PRINCIPAL DE BARRA A 46 KV.   | 3.93  | 1,310.00  | ETESAL      |
| EEO-SMIG(4-81)    | 06/09        | 21:31       | 06/09       | 21:48      | 17m      | 59N     | FALLA EN SUBESTACIONES / EXPLOSION DE TP PRINCIPAL DE BARRA A 46 KV.   | 20.81 | 5,896.17  | ETESAL      |
| CLESA-ATEO(3-85)  | 07/09        | 05:52       | 07/09       | 05:53      | 1m       | 51      | FALLA EN LÍNEA /   | 0.52  | 8.67      | CLESA       |
| CLESA-AHUA(4-81)  | 07/09        | 10:43       | 07/09       | 10:49      | 6m       | 51,50   | FALLA EN LÍNEA / INDICO 59N. RETRASO EN CIERRE POR VERIFICACION DE PERSONAL FUERA LINEA.   | 10.50 | 1,050.00  | CLESA       |
| CLESA-ATEO(3-84)  | 07/09        | 12:28       | 07/09       | 13:55      | 1h 27m   | 51      | FALLA EN LÍNEA / PRUEBA NEGATIVA 12:30 HRS. DEJO FUERA LA CARGA DE LOS LAGARTOS.   | 2.70  | 10,285.00 | CLESA       |
| CLESA-ATEO(4-80)  | 07/09        | 15:16       | 07/09       | 15:23      | 7m       | 51NS    | FALLA EN LÍNEA / INDICO 59N. REPORTARON FUERTE LLUVIA EN LA ZONA. SE LE INFORMO A CLESA, Y SOLICITO PENDIENTE DE CIERRE POR VERIFICACION DE PERSONAL EN LINEA. | 7.20  | 840.00    | CLESA       |
| CLESA-ATEO(3-84)  | 07/09        | 15:31       | 07/09       | 15:33      | 2m       | MANUAL  | SOLICITUD DE DISTRIBUIDOR / PARA RECUPERAR LA CARGA DE SUB- LOS LAGARTOS.  | 1.27  | 42.33     | CLESA       |
| ANDA-SANA(4-85)   | 07/09        | 20:17       | 07/09       | 20:18      | 1m       | 51, 51N | FALLA EN LÍNEA / INDICO 59N.   | 9.86  | 164.33    | ANDA        |
| CLESA-ACAJ(4-81)  | 07/09        | 23:25       | 07/09       | 23:26      | 1m       | 51      | FALLA EN LÍNEA / INDICO 59N  | 4.14  | 69.00     | CLESA       |
| DELSUR-TECO(4-81) | 08/09        | 03:25       | 08/09       | 03:26      | 1m       | 51N     | FALLA EN LÍNEA / INDICO 59N.   | 4.27  | 71.17     | DELSUR      |
| DELSUR-PEDR(4-83) | 08/09        | 04:06       | 08/09       | 04:07      | 1m       | 51N     | FALLA EN LÍNEA / INDICO 59N.   | 4.02  | 67.00     | DELSUR      |
| EEO-15SE(4-83)    | 08/09        | 04:56       | 08/09       | 04:57      | 1m       | 51, 51N | FALLA EN LÍNEA / INDICO 59N.   | 1.36  | 22.67     | EEO         |
| DELSUR-STOM(4-81) | 08/09        | 21:18       | 08/09       | 22:27      | 1h 9m    | 51,51NS | FALLA EN LÍNEA / INDICO 59N. PRUEBA NEGATIVA 21:20 HRS.CARGA TRANSFERIDA HACIA NCUS Y SOYA. / Carga reconectada a las 21:51 del 08-09-2009                     | 22.44 | 12,342.00 | DELSUR      |
| CLESA-ATEO(3-84)  | 08/09        | 22:39       | 09/09       | 01:49      | 3h 10m   | 51      | FALLA EN LÍNEA / PRUEBA NEG. 22:41, 23:20 HRS. ENS CALC.   | 2.34  | 5,650.00  | CLESA       |
| LAGEO-PEDR(4-81)  | 09/09        | 09:30       | 09/09       | 09:31      | 1m       | 51NS    | FALLA EN LÍNEA / INDICO 59N.   | 11.72 | 195.33    | DELSUR      |
| DELSUR-ATEO(4-81) | 09/09        | 17:05       | 09/09       | 17:07      | 2m       | 51NS    | FALLA EN LÍNEA / INDICO TAMBIEN 59N. 17:06 PRUEBA (-) OPERANDO MISMAS PROTECCIONES. DELSUR SECCIONO CIRCUITO.  | 9.63  | 321.00    | DELSUR      |
| DELSUR-SOYA(4-85) | 10/09        | 12:22       | 10/09       | 12:24      | 2m       | 51      | FALLA EN LÍNEA / INDICO 59N. REPORTARON FUERTE LLUVIA EN LA ZONA.  | 2.11  | 70.33     | DELSUR      |
| CLESA-ACAJ(4-81)  | 11/09        | 01:53       | 11/09       | 01:55      | 2m       | MANUAL  | SOLICITUD DE DISTRIBUIDOR / PARA HACER MANIOBRAS PROPIAS EN SUB-METALIO.   | 2.41  | 80.33     | CLESA       |
| ANDA-SANA(4-85)   | 11/09        | 09:59       | 11/09       | 11:15      | 1h 16m   | MANUAL  | SOLICITUD DE PM / TRABAJOS EN INTERRUPTOR PROPIO. CARGA DESCONECTADA PREVIAMENTE.  | 10.26 | 12,996.00 | ANDA        |
| CLESA-ATEO(4-80)  | 11/09        | 13:53       | 11/09       | 13:54      | 1m       | 51      | FALLA EN LÍNEA / INDICO 59N, LUVIA.  | 15.09 | 251.50    | CLESA       |

## Interrupciones del servicio

| Entrega           | Fecha Inicio | Hora Inicio | Fecha Final | Hora Final | Duración | Rele     | Motivo  | MW    | KWh       | Responsable |
|-------------------|--------------|-------------|-------------|------------|----------|----------|---|-------|-----------|-------------|
| d07-ATEO(4-86)    | 11/09        | 14:04       | 11/09       | 14:06      | 2m       | 51NS     | FALLA EN LÍNEA / INDICO 59N, LLUVIA.  | 3.69  | 123.00    | d07         |
| EEO-SMIG(4-84)    | 11/09        | 19:26       | 11/09       | 19:27      | 1m       | 51       | FALLA EN LÍNEA / 59N. LLUVIA FUERTE EN LA ZONA.   | 10.10 | 168.33    | EEO         |
| CLESA-SANA(4-83)  | 11/09        | 20:34       | 11/09       | 20:37      | 3m       | MANUAL   | SOLICITUD DE DISTRIBUIDOR / PARA ABRIR CUCHILLAS TRIPOLARES. DEJO FUERA SUB-SINGUIL.  | 10.73 | 4,516.50  | CLESA       |
| CLESA-SANA(4-83)  | 11/09        | 21:17       | 11/09       | 21:20      | 3m       | MANUAL   | SOLICITUD DE DISTRIBUIDOR / CERRAR CUCHILLAS TRIPOLARES Y RECUPERAR LA CARGA DE SUB-SINGUIL.  | 6.03  | 301.50    | CLESA       |
| ANDA-SANA(4-85)   | 12/09        | 09:58       | 12/09       | 10:25      | 27m      | MANUAL   | SOLICITUD DE PM / CAMBIAR INTERRUPTOR PROPIO. CARGA DESCONECTADA PREVIAMENTE.   | 9.75  | 4,387.50  | ANDA        |
| DELSUR-STOM(4-81) | 12/09        | 12:18       | 12/09       | 12:20      | 2m       | 51, 51NS | FALLA EN LÍNEA / INDICO 59N.  | 19.56 | 652.00    | DELSUR      |
| DELSUR-ATEO(4-81) | 12/09        | 16:59       | 12/09       | 17:00      | 1m       | 51NS     | FALLA EN LÍNEA / INDICO 59N.  | 8.13  | 135.50    | DELSUR      |
| DELSUR-STOM(4-81) | 14/09        | 15:51       | 14/09       | 15:52      | 1m       | 51, 51NS | FALLA EN LÍNEA / INDICO 59N.  | 22.97 | 382.83    | DELSUR      |
| CAESS-SRAF(4-82)  | 14/09        | 18:03       | 14/09       | 18:04      | 1m       | 51       | FALLA EN LÍNEA / LLUVIA EN LA ZONA.   | 7.50  | 125.00    | CAESS       |
| DELSUR-PEDR(4-83) | 15/09        | 07:12       | 15/09       | 07:14      | 2m       | 51NS     | FALLA EN LÍNEA / INDICO 59N.  | 5.80  | 193.33    | DELSUR      |
| DELSUR-SOYA(4-85) | 15/09        | 21:16       | 15/09       | 22:21      | 1h 5m    | 51, 51NS | FALLA EN LÍNEA / INDICO 59N, 21:18 PRUEBA (-) PARTE CARGA RECUP. 21:26 H, ANDA CAFETAL AL CIERRE, ENS CALC.   | 2.58  | 880.00    | DELSUR      |
| DELSUR-SRAF(4-81) | 16/09        | 03:20       | 16/09       | 03:21      | 1m       | 51       | FALLA EN LÍNEA /  | 4.59  | 76.50     | DELSUR      |
| EEO-15SE(4-84)    | 16/09        | 14:29       | 16/09       | 14:30      | 1m       | 51       | FALLA EN LÍNEA / EEO REPORTA LLUVIA EN LA ZONA.   | 8.91  | 148.50    | EEO         |
| DEUSEM-OZAT(4-81) | 16/09        | 19:54       | 16/09       | 19:55      | 1m       | 51       | FALLA EN LÍNEA /  | 13.41 | 223.50    | DEUSEM      |
| DELSUR-TECO(4-82) | 16/09        | 20:14       | 16/09       | 20:15      | 1m       | 59N      | FALLA EN LÍNEA / DESBALANCE DE VOLTAJE.   | 8.19  | 136.50    | DELSUR      |
| DELSUR-ATEO(4-81) | 16/09        | 20:21       | 16/09       | 20:22      | 1m       | 51       | FALLA EN LÍNEA /  | 12.09 | 201.50    | DELSUR      |
| CLESA-ATEO(4-80)  | 16/09        | 20:24       | 16/09       | 20:25      | 1m       | 51       | FALLA EN LÍNEA / LLUVIA CON DESCARGAS ELECTRICAS EN LA ZONA.  | 16.78 | 279.67    | CLESA       |
| DELSUR-SOYA(4-85) | 16/09        | 20:24       | 16/09       | 20:25      | 1m       | 51, 51N  | FALLA EN LÍNEA / LLUVIA EN LA ZONA.   | 2.99  | 49.83     | DELSUR      |
| CLESA-ATEO(4-80)  | 16/09        | 20:26       | 16/09       | 20:27      | 1m       | 51       | FALLA EN LÍNEA / LLUVIA CON DESCARGAS ELECTRICAS EN LA ZONA.  | 11.95 | 199.17    | CLESA       |
| DELSUR-ATEO(4-81) | 16/09        | 20:26       | 16/09       | 22:27      | 2h 1m    | 51       | FALLA EN LÍNEA / LLUVIA EN LA ZONA, PRUEBAS NEG. 20:30, 21:20 H. RECUPERA TODA LA CARGA HASTA LAS 22:37 H. ENS CALC.  | 11.95 | 26,091.00 | DELSUR      |
| DELSUR-SOYA(4-85) | 16/09        | 20:27       | 17/09       | 16:34      | 20h 7m   | 51       | FALLA EN LÍNEA / EN DISPARO SIN CARGA. PRUEBAS NEG. 20:32, 21:39 Y 23:18 H. CARGA TRANSF. AL 46-4-81 A LAS 22:27 H. Y ANDA CAFETAL AL 47-4-81 A LAS 23:20 H. ENS CALC. / Carga reconectada a las 23:20 del 16-09-2009 | 0.00  | 5,592.00  | DELSUR      |

## Interrupciones del servicio

| Entrega           | Fecha Inicio | Hora Inicio | Fecha Final | Hora Final | Duración | Rele   | Motivo   | MW    | KWh       | Responsable |
|-------------------|--------------|-------------|-------------|------------|----------|--------|--|-------|-----------|-------------|
| DELSUR-TECO(4-81) | 16/09        | 20:30       | 16/09       | 20:31      | 1m       | 51N    | FALLA EN LÍNEA / INDICO 59N.   | 7.72  | 128.67    | DELSUR      |
| DELSUR-TECO(4-82) | 16/09        | 20:30       | 16/09       | 20:31      | 1m       | 51N    | FALLA EN LÍNEA / INDICO 59N.   | 7.50  | 125.00    | DELSUR      |
| CLESA-ATEO(4-80)  | 16/09        | 20:31       | 16/09       | 20:36      | 5m       | 51     | FALLA EN LÍNEA / DEJA FUERA SUB-SAN ANDRES.  | 6.49  | 540.83    | CLESA       |
| CLESA-ATEO(3-84)  | 16/09        | 20:33       | 16/09       | 20:34      | 1m       | 51     | FALLA EN LÍNEA / LLUVIA EN LA ZONA.  | 3.54  | 59.00     | CLESA       |
| CLESA-ATEO(4-80)  | 16/09        | 20:44       | 16/09       | 21:08      | 24m      | 51     | FALLA EN LÍNEA / CONTINUA FUERA SUB-SAN ANDRES HASTA LAS 22:58 H. ENS CALC.  | 6.37  | 5,243.00  | CLESA       |
| CLESA-ATEO(3-85)  | 16/09        | 21:02       | 16/09       | 21:03      | 1m       | 51     | FALLA EN LÍNEA / LLUVIA EN LA ZONA.  | 2.84  | 47.33     | CLESA       |
| EEO-SMIG(4-83)    | 16/09        | 21:09       | 16/09       | 21:10      | 1m       | 51     | FALLA EN LÍNEA /   | 5.83  | 97.17     | EEO         |
| EEO-SMIG(4-84)    | 16/09        | 21:24       | 16/09       | 21:25      | 1m       | 51     | FALLA EN LÍNEA / INDICO 59N.   | 8.10  | 135.00    | EEO         |
| EEO-SMIG(4-84)    | 16/09        | 22:06       | 16/09       | 22:07      | 1m       | 51     | FALLA EN LÍNEA / INDICO 59N.   | 7.21  | 120.17    | EEO         |
| CAESS-STOM(4-82)  | 17/09        | 00:20       | 17/09       | 02:11      | 1h 51m   | 51     | FALLA EN LÍNEA / PRUEBA NEG. 00:21 H. CAESS TRANSFIERE LA CARGA A SANT A LAS 00:21 H. / Carga reconectada a las 00:21 del 17-09-2009 | 6.70  | 111.67    | CAESS       |
| EEO-SMIG(4-83)    | 17/09        | 06:55       | 17/09       | 06:57      | 2m       | MANUAL | SOLICITUD DE DISTRIBUIDOR / TOMAR CARGA DE INT. 4-84.  | 2.96  | 98.67     | EEO         |
| EEO-SMIG(4-84)    | 17/09        | 06:55       | 17/09       | 11:06      | 4h 11m   | MANUAL | MANTENIMIENTO PROGRAMADO / TRABAJOS DE EEO, CARGA TRANSFERIDA AL 34-4-83 / Carga reconectada a las 06:57 del 17-09-2009              | 4.89  | 98.67     | EEO         |
| EEO-SMIG(4-83)    | 17/09        | 11:04       | 17/09       | 11:06      | 2m       | MANUAL | SOLICITUD DE DISTRIBUIDOR / RETORNAR CARGA CORRESPONDIENTE A INT. 4-84.  | 11.77 | 392.33    | EEO         |
| DELSUR-SOYA(4-84) | 17/09        | 11:28       | 17/09       | 17:14      | 5h 46m   | 59N    | FALLA EN LÍNEA / DESBLANCE DE VOLTAJE, CARGA RECUP. EN INT. 46-4-81. / Carga reconectada a las 11:31 del 17-09-2009                  | 10.78 | 539.00    | DELSUR      |
| CLESA-OPIC(4-80)  | 17/09        | 17:06       | 17/09       | 17:08      | 2m       | MANUAL | SOLICITUD DE DISTRIBUIDOR / NORMALIZAR UNA CARGA QUE SE ENCONTRABA EN EL 44-4-80. SUB SAN ANDRES.                                    | 3.71  | 123.67    | CLESA       |
| CLESA-SANA(4-83)  | 17/09        | 18:56       | 17/09       | 18:58      | 2m       | 51     | FALLA EN LÍNEA / INDICO 59N. LLUVIA FUERTE EN LA ZONA.   | 10.83 | 361.00    | CLESA       |
| CLESA-ACAJ(4-81)  | 17/09        | 19:02       | 17/09       | 19:04      | 2m       | 51NS   | FALLA EN LÍNEA / INDICO 59N. LLUVIA FUERTE EN LA ZONA.   | 8.80  | 293.33    | CLESA       |
| u03-ACAJ(4-82)    | 17/09        | 19:02       | 17/09       | 19:04      | 2m       | 51     | FALLA EN LÍNEA / INDICO 59N. LLUVIA FUERTE EN LA ZONA.   | 1.51  | 50.33     | u03         |
| CLESA-ACAJ(4-81)  | 17/09        | 20:25       | 17/09       | 20:30      | 5m       | 51     | FALLA EN LÍNEA / INDICO 59N. LLUVIA FUERTE. DEJO FUERA SUB NAVARRETE. ENS CALC.  | 7.26  | 10,925.00 | CLESA       |
| u03-ACAJ(4-82)    | 17/09        | 20:25       | 17/09       | 20:27      | 2m       | 51NS   | FALLA EN LÍNEA / INDICO 59N. LLUVIA FUERTE.  | 0.77  | 25.67     | u03         |
| EEO-SMIG(4-84)    | 17/09        | 21:26       | 17/09       | 21:27      | 1m       | 51NS   | FALLA EN LÍNEA / INDICO 59N. LLUVIA FUERTE.  | 4.96  | 82.67     | EEO         |

## Interrupciones del servicio

| Entrega           | Fecha Inicio | Hora Inicio | Fecha Final | Hora Final | Duración | Rele   | Motivo  | MW    | KWh       | Responsable |
|-------------------|--------------|-------------|-------------|------------|----------|--------|---|-------|-----------|-------------|
| EEO-SMIG(4-84)    | 17/09        | 21:50       | 18/09       | 16:32      | 18h 42m  | 51     | FALLA EN LÍNEA / INDICO 59N. LLUVIA. EEO CAMBIO AISLAMIENTO / Carga reconectada a las 21:58 del 17-09-2009                                  | 4.32  | 576.00    | EEO         |
| EEO-SMIG(4-83)    | 17/09        | 21:57       | 17/09       | 21:58      | 1m       | MANUAL | SOLICITUD DE DISTRIBUIDOR / RECUPERAR LA CARGA DEL INT.34-4-84.   | 3.62  | 60.33     | EEO         |
| DEUSEM-OZAT(4-81) | 17/09        | 22:39       | 17/09       | 22:40      | 1m       | 51     | FALLA EN LÍNEA / FUERTE LLUVIA EN LA ZONA.  | 7.50  | 125.00    | DEUSEM      |
| LAGEO-PEDR(4-81)  | 17/09        | 22:52       | 17/09       | 22:55      | 3m       | 51NS   | FALLA EN LÍNEA / INDICO 59N. LLUVIA FUERTE.   | 9.80  | 490.00    | DELSUR      |
| CLESA-ATEO(3-84)  | 17/09        | 23:50       | 17/09       | 23:52      | 2m       | 51     | FALLA EN LÍNEA / LLUVIA EN LA ZONA.   | 2.02  | 67.33     | CLESA       |
| CLESA-ATEO(4-80)  | 17/09        | 23:55       | 17/09       | 23:57      | 2m       | 51     | FALLA EN LÍNEA / LLUVIA EN LA ZONA  | 1.02  | 34.00     | CLESA       |
| CLESA-ATEO(3-85)  | 17/09        | 23:55       | 18/09       | 00:14      | 19m      | 51     | FALLA EN LÍNEA / LLUVIA EN LA ZONA.   | 2.88  | 912.00    | CLESA       |
| CLESA-ATEO(3-84)  | 18/09        |             | 18/09       | 17:14      | 17h 14m  | 51     | FALLA EN LÍNEA / LLUVIA, CLESA REPORTO CAMBIO DE AISLAMIENTO. ENS CALCULADA.  | 1.48  | 38,890.00 | CLESA       |
| CLESA-ACAJ(4-81)  | 18/09        | 00:57       | 18/09       | 03:58      | 3h 1m    | 51     | FALLA EN LÍNEA / LLUVIA EN LA ZONA.INDICO 59N.PRUEBA NEGATIVAS 00:59,01:24.   | 3.17  | 9,562.83  | CLESA       |
| u03-ACAJ(4-82)    | 18/09        | 01:24       | 18/09       | 01:26      | 2m       | 51NS   | FALLA EN LÍNEA / LLUVIA EN LA ZONA.INDICO 59N.  | 0.60  | 20.00     | u03         |
| ANDA-SANA(4-85)   | 18/09        | 08:05       | 18/09       | 08:27      | 22m      | MANUAL | MANTENIMIENTO PROGRAMADO / TRABAJOS EN INTERRUPTOR PROPIO.  | 10.00 | 3,666.67  | ANDA        |
| CAESS-SRAF(4-82)  | 18/09        | 11:49       | 18/09       | 11:50      | 1m       | 51     | FALLA EN LÍNEA /  | 6.97  | 116.17    | CAESS       |
| ANDA-SANA(4-85)   | 18/09        | 12:37       | 18/09       | 12:54      | 17m      | MANUAL | MANTENIMIENTO PROGRAMADO / TRABAJOS EN INTERRUPTOR PROPIO.  | 10.00 | 2,833.33  | ANDA        |
| CLESA-ATEO(3-85)  | 18/09        | 15:18       | 18/09       | 17:42      | 2h 24m   | MANUAL | SOLICITUD DE DISTRIBUIDOR / REPARAR LINEA PRIMARIA ROTA. ENS CALCULADA.   | 2.67  | 8,890.00  | CLESA       |
| DELSUR-SOYA(4-84) | 18/09        | 17:09       | 19/09       | 01:54      | 8h 45m   | 51     | FALLA EN LÍNEA / DELSUR SOLICITO NO EFECTUAR PRUEBA, CARGA RECUP 46-4-81. / Carga reconectada a las 17:10 del 18-09-2009                    | 6.59  | 109.83    | DELSUR      |
| EEO-SMIG(4-83)    | 18/09        | 18:01       | 18/09       | 18:51      | 50m      | MANUAL | SOLICITUD DE DISTRIBUIDOR / TRANSFERIR CARGA A INT. 4-84, FASE A PUNTO DE CONTACTAR CRUCERO. / Carga reconectada a las 18:04 del 18-09-2009 | 11.66 | 583.00    | EEO         |
| EEO-SMIG(4-84)    | 18/09        | 18:49       | 18/09       | 18:51      | 2m       | MANUAL | SOLICITUD DE DISTRIBUIDOR / NORMALIZAR CARGAS CON INT. 4-83.  | 14.08 | 469.33    | EEO         |
| CLESA-ATEO(3-84)  | 18/09        | 20:28       | 18/09       | 20:32      | 4m       | MANUAL | SOLICITUD DE DISTRIBUIDOR / CERRAR TRAMO HACIA LOS LAGARTOS, RESULTANDO NEGATIVO.   | 1.94  | 129.33    | CLESA       |
| CLESA-AHUA(4-81)  | 18/09        | 22:02       | 18/09       | 22:04      | 2m       | 50, 51 | FALLA EN LÍNEA / INDICO 59N.  | 7.80  | 260.00    | CLESA       |
| CAESS-SOYA(2-81)  | 18/09        | 22:23       | 18/09       | 22:28      | 5m       | 51     | FALLA EN LÍNEA / DISPARO DE LOS TRES ALIMENTADORES, LLUVIA.   | 44.63 | 3,719.17  | CAESS       |

## Interrupciones del servicio

| Entrega           | Fecha Inicio | Hora Inicio | Fecha Final | Hora Final | Duración | Rele      | Motivo  | MW    | KWh       | Responsable |
|-------------------|--------------|-------------|-------------|------------|----------|-----------|---|-------|-----------|-------------|
| DELSUR-ATEO(4-81) | 18/09        | 22:26       | 18/09       | 23:34      | 1h 8m    | 51NS      | FALLA EN LÍNEA / INDICO 59N, 22:29 H. PRUEBA NEGATIVA. CIRCUITO TOMO TODA SU CARGA, AL MOMENTO DEL DISPARO HABIA FUERTE TORMENTA.         | 7.99  | 9,055.33  | DELSUR      |
| CLESA-ACAJ(3-81)  | 18/09        | 23:08       | 18/09       | 23:09      | 1m       | 51        | FALLA EN LÍNEA / LLUVIA.  | 0.81  | 13.50     | CLESA       |
| DELSUR-OPIC(4-82) | 19/09        | 00:51       | 19/09       | 00:53      | 2m       | 51        | FALLA EN LÍNEA / INDICO 59N   | 19.46 | 648.67    | DELSUR      |
| DELSUR-OPIC(4-82) | 19/09        | 02:54       | 19/09       | 02:56      | 2m       | 51        | FALLA EN LÍNEA / INDICO 59N.  | 18.88 | 629.33    | DELSUR      |
| ANDA-SANA(4-85)   | 19/09        | 07:43       | 19/09       | 13:55      | 6h 12m   | MANUAL    | SOLICITUD DE PM / TRABAJOS EN SUS INSTALACIONES.  | 10.00 | 62,000.00 | ANDA        |
| CLESA-ATEO(3-84)  | 19/09        | 11:53       | 19/09       | 11:55      | 2m       | MANUAL    | SOLICITUD DE DISTRIBUIDOR / RECUPERAR TRAMO DE LINEA QUE SE ENCONTRABA FUERA POR SUSTITUCION DE AISLAMIENTO.                              | 2.18  | 72.67     | CLESA       |
| DELSUR-PEDR(4-83) | 19/09        | 13:27       | 19/09       | 13:28      | 1m       | 51NS      | FALLA EN LÍNEA / 59N.   | 12.22 | 203.67    | DELSUR      |
| EEO-SMIG(4-84)    | 19/09        | 19:21       | 19/09       | 19:31      | 10m      | 51        | FALLA EN LÍNEA / INDICO TAMBIEN 59N. PRUEBA (-) A LAS 19:22, OPERANDO MISMAS PROTECCIONES. / Carga reconectada a las 19:25 del 19-09-2009 | 11.09 | 739.33    | EEO         |
| EEO-SMIG(4-83)    | 19/09        | 19:24       | 19/09       | 19:25      | 1m       | MANUAL    | SOLICITUD DE DISTRIBUIDOR / PARA RECUPERAR CARGA DEL INT.34-4-84.   | 9.45  | 157.50    | EEO         |
| EEO-SMIG(4-82)    | 19/09        | 19:28       | 19/09       | 19:30      | 2m       | 51        | FALLA EN LÍNEA / INDICO TAMBIEN 59N. PRUEBA (-) A LAS 19:29 HRS. OPERANDO MISMAS PROTECCIONES. EEO DEJO SUB ANAMOROS FUERA.               | 12.31 | 410.33    | EEO         |
| ANDA-SANA(4-85)   | 20/09        | 01:51       | 20/09       | 01:52      | 1m       | 51, 51NS  | FALLA EN LÍNEA / INDICO 59N. ANDA REPORTA LLUVIA EN LA ZONA.  | 2.85  | 47.50     | ANDA        |
| EEO-SMIG(4-83)    | 20/09        | 02:28       | 20/09       | 02:29      | 1m       | MANUAL    | SOLICITUD DE DISTRIBUIDOR / RETORNAR LA CARGA DE INT. 34-4-84.  | 6.79  | 113.17    | EEO         |
| CAESS-CGRA(4-81)  | 20/09        | 07:58       | 20/09       | 17:37      | 9h 39m   | MANUAL    | MANTENIMIENTO PROGRAMADO / PAMM ETESAL EN AREA DE 46 KV. TODA LA CARGA FUERA.ENS CALC.ETESAL:69,220 KWHCAESS :26,130 KWH                  | 4.16  | 95,350.00 | ETESAL      |
| u03-ACAJ(4-82)    | 20/09        | 11:31       | 20/09       | 11:32      | 1m       | NO INDICO | FALLA EN LÍNEA /  | 0.50  | 8.33      | u03         |
| CLESA-ACAJ(4-81)  | 20/09        | 17:24       | 20/09       | 17:25      | 1m       | MANUAL    | SOLICITUD DE DISTRIBUIDOR / CERRAR UNAS CUCHILLAS TRIPOLARES.   | 3.93  | 65.50     | CLESA       |
| CLESA-AHUA(4-81)  | 22/09        | 03:49       | 22/09       | 03:52      | 3m       | MANUAL    | SOLICITUD DE DISTRIBUIDOR / TOMAR LA CARGA DE INT. 35-4-83.   | 6.04  | 302.00    | CLESA       |
| CLESA-SANA(4-83)  | 22/09        | 03:49       | 22/09       | 17:58      | 14h 9m   | MANUAL    | MANTENIMIENTO PROGRAMADO / TRANSFERIR LA CARGA A INT. 16-4-81 POR TRABAJOS DE CLESA. / Carga reconectada a las 03:52 del 22-09-2009       | 4.75  | 237.50    | CLESA       |
| EEO-SMIG(4-84)    | 22/09        | 06:01       | 22/09       | 06:02      | 1m       | 51        | FALLA EN LÍNEA / INDICO 59N.  | 7.69  | 128.17    | EEO         |



## Interrupciones del servicio

| Entrega           | Fecha Inicio | Hora Inicio | Fecha Final | Hora Final | Duración | Rele   | Motivo  | MW    | KWh       | Responsable |
|-------------------|--------------|-------------|-------------|------------|----------|--------|---|-------|-----------|-------------|
| CAESS-SOYA(2-81)  | 22/09        | 06:36       | 22/09       | 06:37      | 1m       | 51     | FALLA EN LÍNEA / DISPARO DE LOS TRES ALIMENTADORES DE 23KV.   | 48.40 | 806.67    | CAESS       |
| ANDA-SANA(4-85)   | 22/09        | 07:56       | 22/09       | 08:45      | 49m      | MANUAL | MANTENIMIENTO PROGRAMADO / TRABAJOS DE ANDA EN SU RED.  | 10.00 | 8,166.67  | ANDA        |
| CLESA-AHUA(4-81)  | 22/09        | 17:54       | 22/09       | 17:57      | 3m       | MANUAL | SOLICITUD DE DISTRIBUIDOR / PARA NORMALIZAR LA CARGA DE ESTE INTERRUPTOR.   | 20.88 | 1,044.00  | CLESA       |
| DELSUR-SRAF(4-81) | 22/09        | 17:55       | 22/09       | 17:56      | 1m       | 51     | FALLA EN LÍNEA / INDICO TAMBIEN 59N. DELSUR REPORTA LLUVIA EN LA ZONA.  | 5.23  | 87.17     | DELSUR      |
| EEO-15SE(4-84)    | 22/09        | 17:56       | 22/09       | 17:57      | 1m       | 51     | FALLA EN LÍNEA / INDICO TAMBIEN 59N. EEO REPORTA TORMENTA EN LA ZONA.   | 10.58 | 176.33    | EEO         |
| EEO-15SE(4-84)    | 22/09        | 18:11       | 22/09       | 19:17      | 1h 6m    | 51     | FALLA EN LÍNEA / PRUEBA (-) A LAS 18:12 Y 18:22, OPERANDO RELE 59N. SOLO QUEDA SERVIDA CON CARGA DE SUB SAN LORENZO Y SUB STA. ANITA. | 9.50  | 10,450.00 | EEO         |
| EEO-15SE(4-83)    | 22/09        | 18:12       | 22/09       | 18:25      | 13m      | MANUAL | CERO VOLTAJE / CERO VOLTAJE EN BARRA A 46 KV.   | 3.09  | 669.50    | ETESAL      |
| EEO-SMIG(4-85)    | 22/09        | 18:29       | 22/09       | 18:30      | 1m       | 51     | FALLA EN LÍNEA / INDICO TAMBIEN 59N. EEO REPORTA FUERTE LLUVIA EN LA ZONA.  | 6.06  | 101.00    | EEO         |
| DEUSEM-OZAT(4-81) | 22/09        | 19:01       | 22/09       | 19:02      | 1m       | 51     | FALLA EN LÍNEA / INDICO TAMBIEN 59N. EEO REPORTA TORMENTA EN LA ZONA.   | 10.78 | 179.67    | DEUSEM      |
| EEO-15SE(4-83)    | 22/09        | 19:08       | 22/09       | 19:14      | 6m       | MANUAL | SOLICITUD DE DISTRIBUIDOR / PARA TRATAR DE RECUPERAR CARGA DE INT.18-4-84 SIENDO LA PRUEBA(19:10 HRS.) NEGATIVA.                      | 2.61  | 261.00    | EEO         |
| EEO-SMIG(4-86)    | 22/09        | 19:26       | 22/09       | 19:27      | 1m       | MANUAL | SOLICITUD DE DISTRIBUIDOR / PARA RECUPERAR CARGA DE SUB CHAPELTIQUE Y CIUDAD BARRIOS.   | 9.43  | 157.17    | EEO         |
| CLESA-ATEO(4-82)  | 22/09        | 19:29       | 22/09       | 19:30      | 1m       | 51NS   | FALLA EN LÍNEA / INDICO TAMBIEN 59N. CLESA REPORTA FUERTE LLUVIA EN LA ZONA.  | 10.35 | 172.50    | CLESA       |
| CLESA-ATEO(4-80)  | 22/09        | 19:34       | 22/09       | 19:36      | 2m       | 51     | FALLA EN LÍNEA / INDICO TAMBIEN 59N. CLESA REPORTA TORMENTA EN LA ZONA.   | 8.52  | 284.00    | CLESA       |
| CLESA-ATEO(3-84)  | 22/09        | 19:38       | 22/09       | 19:39      | 1m       | 51     | FALLA EN LÍNEA / CLESA REPORTA FUERTE LLUVIA EN LA ZONA.  | 4.15  | 69.17     | CLESA       |
| CLESA-ATEO(4-82)  | 22/09        | 19:41       | 22/09       | 19:42      | 1m       | 51NS   | FALLA EN LÍNEA / INDICO TAMBIEN 59N. CLESA REPORTA FUERTE LLUVIA EN LA ZONA.  | 7.50  | 125.00    | CLESA       |
| CLESA-ATEO(4-82)  | 22/09        | 20:06       | 22/09       | 20:07      | 1m       | 51NS   | FALLA EN LÍNEA / INDICO TAMBIEN 59N. CLESA REPORTA FUERTE LLUVIA EN LA ZONA.  | 8.87  | 147.83    | CLESA       |
| CLESA-ATEO(4-82)  | 22/09        | 20:10       | 22/09       | 20:12      | 2m       | 51NS   | FALLA EN LÍNEA / INDICO TAMBIEN 59N. CLESA REPORTA FUERTE LLUVIA EN LA ZONA.  | 5.78  | 192.67    | CLESA       |

## Interrupciones del servicio

| Entrega           | Fecha Inicio | Hora Inicio | Fecha Final | Hora Final | Duración | Rele      | Motivo   | MW    | KWh      | Responsable |
|-------------------|--------------|-------------|-------------|------------|----------|-----------|--|-------|----------|-------------|
| CLESA-ATEO(4-83)  | 22/09        | 20:10       | 22/09       | 20:12      | 2m       | NO INDICO | FALLA EN LÍNEA / INDICO TAMBIEN 59N. ETESAL REPORTA OPERACION DE RELE 51.  | 0.47  | 15.67    | CLESA       |
| CLESA-ATEO(4-82)  | 22/09        | 20:13       | 22/09       | 20:16      | 3m       | 51NS      | FALLA EN LÍNEA / INDICO TAMBIEN 59N. CLESA REPORTA FUERTE LLUVIA EN LA ZONA.   | 4.88  | 244.00   | CLESA       |
| EEO-SMIG(4-86)    | 22/09        | 20:32       | 22/09       | 20:33      | 1m       | MANUAL    | SOLICITUD DE DISTRIBUIDOR / PARA RECUPERAR CARGA DE SUB CHINAMECA.   | 10.37 | 172.83   | EEO         |
| CLESA-ATEO(4-82)  | 22/09        | 21:02       | 22/09       | 21:17      | 15m      | 51NS      | FALLA EN LÍNEA / INDICO TAMBIEN 59N. CLESA REPORTA FUERTE LLUVIA EN LA ZONA.   | 8.09  | 2,022.50 | CLESA       |
| CLESA-ATEO(4-82)  | 22/09        | 21:25       | 22/09       | 21:27      | 2m       | 51NS      | FALLA EN LÍNEA / INDICO TAMBIEN 59N. CLESA REPORTA FUERTE LLUVIA EN LA ZONA.   | 6.02  | 100.33   | CLESA       |
| CLESA-ATEO(4-83)  | 22/09        | 21:25       | 22/09       | 21:26      | 1m       | NO INDICO | FALLA EN LÍNEA / INDICO TAMBIEN 59N. ETESAL REPORTA OPERACION DE RELE 51.  | 0.52  | 8.67     | CLESA       |
| CLESA-ATEO(4-82)  | 22/09        | 21:29       | 22/09       | 22:15      | 46m      | 51NS      | FALLA EN LÍNEA / INDICO TAMBIEN 59N. CLESA REPORTA FUERTE LLUVIA EN LA ZONA.   | 6.02  | 4,615.33 | CLESA       |
| EEO-SMIG(4-85)    | 22/09        | 21:39       | 22/09       | 21:40      | 1m       | 51NS      | FALLA EN LÍNEA / INDICO TAMBIEN 59N. EEO REPORTA LLUVIA EN LA ZONA.  | 2.16  | 36.00    | EEO         |
| CLESA-OPIC(4-80)  | 22/09        | 23:02       | 22/09       | 23:04      | 2m       | 59N       | FALLA EN LÍNEA / DESBALANCE DE VOLTAJE. CLESA REPORTA LLUVIA EN LA ZONA.   | 5.98  | 199.33   | CLESA       |
| EEO-SMIG(4-84)    | 23/09        | 17:27       | 23/09       | 17:28      | 1m       | 51        | FALLA EN LÍNEA / 59N. LLUVIA FUERTE EN LA ZONA.  | 7.70  | 128.33   | EEO         |
| B&D-SBAR(2-82)    | 23/09        | 18:49       | 23/09       | 18:51      | 2m       | 51        | FALLA EN LÍNEA / FUERTE LLUVIA EN LA ZONA.   | 3.06  | 102.00   | B&D         |
| B&D-SBAR(2-82)    | 23/09        | 18:53       | 23/09       | 18:56      | 3m       | 51        | FALLA EN LÍNEA / FUERTE LLUVIA EN LA ZONA.   | 0.40  | 20.00    | B&D         |
| DELSUR-SOYA(4-85) | 23/09        | 19:22       | 23/09       | 19:23      | 1m       | 51        | FALLA EN LÍNEA / 59N. FUERTE LLUVIA EN LA ZONA.  | 5.30  | 88.33    | DELSUR      |
| DELSUR-PEDR(4-82) | 23/09        | 20:29       | 23/09       | 20:31      | 2m       | 51        | FALLA EN LÍNEA / 59N.LLUVIA FUERTE EN LA ZONA.   | 2.46  | 82.00    | DELSUR      |
| DELSUR-PEDR(4-83) | 23/09        | 20:29       | 23/09       | 20:31      | 2m       | 51        | FALLA EN LÍNEA / 59N.LLUVIA FUERTE EN LA ZONA.   | 5.31  | 177.00   | DELSUR      |
| LAGEO-PEDR(4-81)  | 23/09        | 20:44       | 23/09       | 20:47      | 3m       | 51NS      | FALLA EN LÍNEA / 59N.LLUVIA FUERTE EN LA ZONA.   | 7.11  | 355.50   | DELSUR      |
| DEUSEM-OZAT(4-81) | 23/09        | 23:46       | 24/09       | 03:37      | 3h 51m   | MANUAL    | MANTENIMIENTO PROGRAMADO / POR TRABAJOS EN BARRA DE 46KV POR ETESAL.CARGA TRANSFERIDA HACIA INT.34-4-85 / Carga reconectada a las 23:50 del 23-09-2009 | 6.87  | 458.00   | ETESAL      |

## Interrupciones del servicio

| Entrega           | Fecha Inicio | Hora Inicio | Fecha Final | Hora Final | Duración | Rele   | Motivo   | MW    | KWh      | Responsable |
|-------------------|--------------|-------------|-------------|------------|----------|--------|--|-------|----------|-------------|
| DEUSEM-OZAT(4-82) | 23/09        | 23:46       | 24/09       | 03:37      | 3h 51m   | MANUAL | MANTENIMIENTO PROGRAMADO / POR TRABAJOS EN BARRA DE 46KV POR ETESAL.CARGA TRANSFERIDA HACIA INT.34-4-85 / Carga reconectada a las 23:50 del 23-09-2009                     | 2.72  | 181.33   | ETESAL      |
| EEO-SMIG(4-85)    | 23/09        | 23:49       | 23/09       | 23:50      | 1m       | MANUAL | MANTENIMIENTO PROGRAMADO / POR TRASLADO DE CARGA DESDE INTS.40-4-81 Y 40-4-82. POR TRABAJOS DE ETESAL EN BARRA DE 46KV EN OZATLAN.   | 2.43  | 40.50    | ETESAL      |
| EEO-SMIG(4-85)    | 24/09        | 03:35       | 24/09       | 03:36      | 1m       | MANUAL | SOLICITUD DE DISTRIBUIDOR / RETORNAR LA CARGA HACIA LOS INT.40-4-81 Y 40-4-82.   | 12.09 | 201.50   | ETESAL      |
| DELSUR-PEDR(4-83) | 24/09        | 13:48       | 24/09       | 13:50      | 2m       | 51     | FALLA EN LÍNEA / INDICO 59N  | 7.89  | 263.00   | DELSUR      |
| CLESA-ATEO(3-85)  | 24/09        | 15:14       | 24/09       | 15:15      | 1m       | 51     | FALLA EN LÍNEA /   | 2.95  | 49.17    | CLESA       |
| CLESA-ACAJ(4-81)  | 24/09        | 15:55       | 24/09       | 15:56      | 1m       | 51     | FALLA EN LÍNEA / INDICO 59N.   | 4.83  | 80.50    | CLESA       |
| u03-ACAJ(4-82)    | 24/09        | 15:55       | 24/09       | 15:56      | 1m       | 51NS   | FALLA EN LÍNEA / INDICO 59N.   | 0.74  | 12.33    | u03         |
| CAESS-SRAF(4-82)  | 24/09        | 18:57       | 24/09       | 18:58      | 1m       | 51     | FALLA EN LÍNEA /   | 9.37  | 156.17   | CAESS       |
| EEO-SMIG(4-85)    | 24/09        | 20:50       | 24/09       | 20:51      | 1m       | 51     | FALLA EN LÍNEA / INDICO 59N. LLUVIA.   | 3.24  | 54.00    | EEO         |
| EEO-SMIG(4-86)    | 25/09        | 00:44       | 25/09       | 00:46      | 2m       | MANUAL | SOLICITUD DE DISTRIBUIDOR / RETORNAR PARTE DE CARGA CORRESPONDIENTE A INT. 18-4-84.  | 9.45  | 315.00   | EEO         |
| EEO-15SE(4-84)    | 25/09        | 00:45       | 25/09       | 00:49      | 4m       | MANUAL | SOLICITUD DE DISTRIBUIDOR / NORMALIZAR CARGA QUE ESTABA TRANSFERIDA A INT. 34-4-86, RESULTANDO LA MANIOBRA INFRUCTUOSA, 00:46 Y 00:47 PRUEBAS NEGATIVAS OPERANDO RELE 59N. | 2.22  | 148.00   | EEO         |
| EEO-SMIG(4-86)    | 25/09        | 00:48       | 25/09       | 00:49      | 1m       | MANUAL | SOLICITUD DE DISTRIBUIDOR / TOMAR NUEVAMENTE PARTE DE CARGA CORRESPONDIENTE A INT. 18-4-84.  | 5.90  | 98.33    | EEO         |
| LAGEO-PEDR(4-81)  | 25/09        | 01:48       | 25/09       | 01:51      | 3m       | 51NS   | FALLA EN LÍNEA / INDICO 59N.   | 5.31  | 265.50   | DELSUR      |
| CLESA-AHUA(4-81)  | 25/09        | 08:07       | 25/09       | 08:08      | 1m       | MANUAL | MANTENIMIENTO PROGRAMADO / POR CLESA. NO SE DEJA CARGA AFECTADA.   | 8.09  | 134.83   | CLESA       |
| DELSUR-TECO(4-81) | 25/09        | 19:21       | 25/09       | 19:23      | 2m       | 59N    | FALLA EN LÍNEA / DESBALANCE DE VOLTAJE. DELSUR REPORTA LLUVIA CON DESCARGAS ELECTRICAS EN LA ZONA.   | 8.81  | 293.67   | DELSUR      |
| EEO-15SE(4-84)    | 25/09        | 21:18       | 25/09       | 21:19      | 1m       | MANUAL | FALLA EN LÍNEA / DESBALANCE DE VOLTAJE. APERTURA PARA DISCRIMINAR ALARMA DE 59N. EEO DEJA CARGA DE SUB STA. ANITA FUERA.   | 1.28  | 21.33    | EEO         |
| CAESS-SOYA(2-81)  | 25/09        | 22:02       | 25/09       | 22:04      | 2m       | 51     | FALLA EN LÍNEA / ETESAL REPORTA LLUVIA EN LA ZONA.   | 41.70 | 1,390.00 | CAESS       |
| EEO-15SE(4-84)    | 25/09        | 22:07       | 25/09       | 22:08      | 1m       | MANUAL | SOLICITUD DE DISTRIBUIDOR / PARA RECUPERAR CARGA DE SUB STA. ANITA.  | 0.06  | 1.00     | EEO         |

## Interrupciones del servicio

| Entrega           | Fecha Inicio | Hora Inicio | Fecha Final | Hora Final | Duración | Rele      | Motivo  | MW    | KWh       | Responsable |
|-------------------|--------------|-------------|-------------|------------|----------|-----------|---|-------|-----------|-------------|
| CLESA-AHUA(4-81)  | 25/09        | 22:37       | 25/09       | 22:38      | 1m       | MANUAL    | SOLICITUD DE DISTRIBUIDOR / PARA NORMALIZAR CARGA DE SUB SALCOATITAN.   | 7.10  | 118.33    | CLESA       |
| B&D-SBAR(2-82)    | 26/09        | 08:12       | 26/09       | 08:16      | 4m       | 51        | FALLA EN LÍNEA / HUBO DIFICULTAD EN LA TRANSMISION VIA RADIO POR PARTE DE B&D.  | 3.18  | 212.00    | B&D         |
| DELSUR-SANA(4-84) | 26/09        | 09:26       | 26/09       | 09:27      | 1m       | 51, 51NS  | FALLA EN LÍNEA / INDICO 59N.  | 0.43  | 7.17      | DELSUR      |
| EEO-SMIG(4-84)    | 26/09        | 16:58       | 26/09       | 16:59      | 1m       | 51NS      | FALLA EN LÍNEA / INDICO 59N.  | 7.80  | 130.00    | EEO         |
| EEO-SMIG(4-82)    | 26/09        | 17:04       | 26/09       | 17:05      | 1m       | 51        | FALLA EN LÍNEA / INDICO 59N.  | 9.48  | 158.00    | EEO         |
| CLESA-ATEO(4-82)  | 26/09        | 18:03       | 26/09       | 18:04      | 1m       | MANUAL    | SOLICITUD DE DISTRIBUIDOR / PARA CERRAR POWER FUSE EN SUBESTACION DE LA EMPRESA BON APPETIT.  | 9.06  | 151.00    | CLESA       |
| CLESA-SONS(4-82)  | 27/09        | 02:01       | 27/09       | 02:02      | 1m       | MANUAL    | SOLICITUD DE DISTRIBUIDOR / POR TRABAJO PROGRAMADO EN SUB-SAN JUAN, NO HAY CARGA AFECTADA FUE TRANSFERIDA A 13-3-81 Y 3-82.         | 1.47  | 24.50     | CLESA       |
| CLESA-GUAJ(4-81)  | 27/09        | 08:10       | 27/09       | 16:55      | 8h 45m   | MANUAL    | MANTENIMIENTO PROGRAMADO / TRABAJOS DE CLESA EN SU RED DE 46KV. CARGA FUERA, ENS CALCULADA.   | 2.91  | 29,380.00 | CLESA       |
| EEO-SMIG(4-86)    | 27/09        | 08:17       | 27/09       | 08:18      | 1m       | MANUAL    | SOLICITUD DE DISTRIBUIDOR / DEJAR FUERA LA CARGA DE CHAPELTIQUE Y CIUDAD BARRIOS. POR TRABAJOS PROGRAMADOS.ENS CALC.                | 11.82 | 17,366.33 | EEO         |
| DEUSEM-OZAT(4-81) | 27/09        | 08:32       | 27/09       | 08:33      | 1m       | MANUAL    | MANTENIMIENTO PROGRAMADO / DEJAR FUERA SUB-CALIFORNIA POR TRABAJOS PROGRAMADOS. ENS CALCULADA                                       | 8.10  | 6,190.00  | DEUSEM      |
| CLESA-ACAJ(4-81)  | 27/09        | 10:34       | 27/09       | 10:35      | 1m       | 51        | FALLA EN LÍNEA /  | 4.97  | 82.83     | CLESA       |
| EEO-SMIG(4-86)    | 27/09        | 13:42       | 27/09       | 13:43      | 1m       | MANUAL    | SOLICITUD DE DISTRIBUIDOR / RECUPERAR LA CARGA DE CHAPELTIQUE Y CIUDAD BARRIOS.   | 9.66  | 161.00    | EEO         |
| EEO-SMIG(4-84)    | 27/09        | 15:12       | 27/09       | 15:13      | 1m       | 51        | FALLA EN LÍNEA / INDICO 59N. REPORTARON FUERTE LLUVIA EN LA ZONA.   | 6.77  | 112.83    | EEO         |
| EEO-SMIG(4-84)    | 27/09        | 15:21       | 27/09       | 15:22      | 1m       | 51NS      | FALLA EN LÍNEA / INDICO 59N. REPORTARON FUERTE LLUVIA EN LA ZONA.   | 6.16  | 102.67    | EEO         |
| EEO-SMIG(4-84)    | 27/09        | 15:24       | 27/09       | 19:56      | 4h 32m   | 51        | FALLA EN LÍNEA / INDICO 59N. LLUVIA, CARGA RECUP. EN INT. 4-83. NO ENCONTRARON FALLA / Carga reconectada a las 15:27 del 27-09-2009 | 4.26  | 213.00    | EEO         |
| EEO-SMIG(4-83)    | 27/09        | 15:26       | 27/09       | 15:27      | 1m       | MANUAL    | SOLICITUD DE DISTRIBUIDOR / RECUPERAR CARGA DE INT.34-4-84  | 4.07  | 67.83     | EEO         |
| DEUSEM-OZAT(4-81) | 27/09        | 16:43       | 27/09       | 16:44      | 1m       | MANUAL    | MANTENIMIENTO PROGRAMADO / RECUPERAR SUB-CALIFORNIA.  | 7.90  | 131.67    | DEUSEM      |
| DEUSEM-OZAT(4-81) | 27/09        | 16:45       | 27/09       | 16:47      | 2m       | NO INDICO | FALLA EN LÍNEA /  | 4.98  | 166.00    | DEUSEM      |
| EEO-SMIG(4-85)    | 27/09        | 17:01       | 27/09       | 17:02      | 1m       | 51        | FALLA EN LÍNEA / INDICO 59N.  | 3.07  | 51.17     | EEO         |

## Interrupciones del servicio

| Entrega           | Fecha Inicio | Hora Inicio | Fecha Final | Hora Final | Duración | Rele   | Motivo   | MW    | KWh      | Responsable |
|-------------------|--------------|-------------|-------------|------------|----------|--------|--|-------|----------|-------------|
| EEO-SMIG(4-81)    | 27/09        | 17:03       | 27/09       | 17:45      | 42m      | 51     | FALLA EN LÍNEA / INDICO 59N. 17:04 H PRUEBA (-), EEO RETIRAO RAMAS SOBRE CIRCUITO. ENS CALCULADA   | 13.71 | 2,800.00 | EEO         |
| EEO-SMIG(4-83)    | 27/09        | 17:23       | 27/09       | 17:24      | 1m       | MANUAL | SOLICITUD DE DISTRIBUIDOR / RECUPERAR PARTE DE CARGA DE INT. 4-81 (SUB-SAN MIGUEL).  | 8.88  | 148.00   | EEO         |
| EEO-SMIG(4-83)    | 27/09        | 17:44       | 27/09       | 17:45      | 1m       | MANUAL | SOLICITUD DE DISTRIBUIDOR / RETORNAR CARGA CORRESPONDIENTE A INT. 4-81.  | 19.56 | 326.00   | EEO         |
| CLESA-SONS(4-82)  | 27/09        | 22:16       | 27/09       | 22:18      | 2m       | MANUAL | MANTENIMIENTO PROGRAMADO / NORMALIZAR CARGAS TRANSFERIDAS A INTS. 13-3-81 Y 13-3-82.   | 2.82  | 94.00    | CLESA       |
| EEO-SMIG(4-83)    | 28/09        | 01:57       | 28/09       | 01:59      | 2m       | MANUAL | SOLICITUD DE DISTRIBUIDOR / RETORNAR CARGA CORRESPONDIENTE A INT. 4-84.  | 7.78  | 259.33   | EEO         |
| DELSUR-SANA(4-84) | 28/09        | 16:37       | 28/09       | 16:38      | 1m       | 51     | FALLA EN LÍNEA /   | 0.56  | 9.33     | DELSUR      |
| EEO-SMIG(4-84)    | 28/09        | 17:28       | 28/09       | 17:29      | 1m       | 51NS   | FALLA EN LÍNEA / INDICO TAMBIEN 59N. EEO REPORTA LLUVIA EN LA ZONA.  | 7.93  | 132.17   | EEO         |
| EEO-15SE(4-83)    | 28/09        | 18:33       | 28/09       | 18:34      | 1m       | 51     | FALLA EN LÍNEA / EEO REPORTA FUERTE LLUVIA EN LA ZONA.   | 3.18  | 53.00    | EEO         |
| CAESS-SRAF(4-82)  | 28/09        | 20:33       | 28/09       | 20:34      | 1m       | 51     | FALLA EN LÍNEA / CAESS REPORTA LLUVIA EN LA ZONA.  | 7.61  | 126.83   | CAESS       |
| EEO-15SE(4-84)    | 29/09        | 00:57       | 29/09       | 01:00      | 3m       | MANUAL | SOLICITUD DE DISTRIBUIDOR / PARA RECUPERAR CARGA DE CHAPELTIQUE Y CDAD. BARRIOS CON RESULTADO NEG AL CERRAR A LAS 00:58 POR ACTUACION DE 59N   | 1.57  | 78.50    | EEO         |
| EEO-SMIG(4-86)    | 29/09        | 00:57       | 29/09       | 00:58      | 1m       | MANUAL | SOLICITUD DE DISTRIBUIDOR / PARA NORMALIZAR LA CARGA DEL 18-4-84.  | 9.17  | 152.83   | EEO         |
| EEO-SMIG(4-86)    | 29/09        | 01:01       | 29/09       | 01:02      | 1m       | MANUAL | SOLICITUD DE DISTRIBUIDOR / PARA RECUPERAR LA CARGA DE CHAPELTIQUE Y CDAD. BARRIOS.  | 9.17  | 152.83   | EEO         |
| DELSUR-SRAF(4-81) | 29/09        | 16:19       | 29/09       | 16:20      | 1m       | 51     | FALLA EN LÍNEA /   | 5.85  | 97.50    | DELSUR      |
| DELSUR-PEDR(4-83) | 29/09        | 16:51       | 29/09       | 16:53      | 2m       | 51     | FALLA EN LÍNEA /   | 7.30  | 243.33   | DELSUR      |
| LAGEO-PEDR(4-81)  | 29/09        | 16:52       | 01/09       | 14:24      | 45h 32m  | 51     | FALLA EN LÍNEA / PRUEBAS NEG. 16:53, 16:55 H. PARTE DE LA CARGA TRANSF. A 47-4-83 Y NCUS A LAS 16:57 H., DEJA FUERA SUB-COMALAPA HASTA LAS 17:18 H. ENS CALC. / Carga reconectada a las 17:18 del 29-09-2009 | 7.42  | 1,668.00 | DELSUR      |
| DELSUR-PEDR(4-84) | 29/09        | 16:53       | 29/09       | 16:54      | 1m       | 51     | FALLA EN LÍNEA / INDICO 59N.   | 3.44  | 57.33    | DELSUR      |
| DELSUR-SOYA(4-85) | 29/09        | 17:14       | 29/09       | 17:15      | 1m       | 51     | FALLA EN LÍNEA / INDICO 59N.   | 5.41  | 90.17    | DELSUR      |
| CAESS-SANT(2-81)  | 29/09        | 17:33       | 29/09       | 17:36      | 3m       | MANUAL | CERO VOLTAJE / POR DISPARO DE LAS LINEAS SANT-NEJA Y SANT-TALN.  | 73.70 | 3,685.00 | ETESAL      |
| CLESA-ATEO(4-82)  | 29/09        | 17:39       | 29/09       | 17:40      | 1m       | 51     | FALLA EN LÍNEA /   | 11.05 | 184.17   | CLESA       |

## Interrupciones del servicio

| Entrega           | Fecha Inicio | Hora Inicio | Fecha Final | Hora Final | Duración | Rele   | Motivo   | MW    | KWh      | Responsable |
|-------------------|--------------|-------------|-------------|------------|----------|--------|--|-------|----------|-------------|
| CLESA-ATEO(4-82)  | 29/09        | 17:41       | 29/09       | 17:42      | 1m       | 51     | FALLA EN LÍNEA /   | 11.00 | 183.33   | CLESA       |
| CLESA-ATEO(3-85)  | 29/09        | 17:54       | 29/09       | 17:55      | 1m       | 51     | FALLA EN LÍNEA /   | 2.63  | 43.83    | CLESA       |
| DELSUR-PEDR(4-82) | 30/09        | 12:04       | 30/09       | 13:28      | 1h 24m   | MANUAL | SOLICITUD DE DISTRIBUIDOR / TRABAJOS DE EMERGENCIA, CARGA FUERA. | 3.24  | 4,536.00 | DELSUR      |

## Programa Anual de Mantenimientos

|                         | PLANTA/UNIDAD         | PROGRAMADO | DURACION  | REPROGRAMADO | DURACION  | EJECUTADO | DURACION  | MOTIVO    |           |   |  |
|-------------------------|-----------------------|------------|-----------|--------------|-----------|-----------|-----------|-----------|-----------|---|--|
| CEL                     | <b>GUAJOYO</b>        |            |           |              |           |           |           |           |           |   |  |
|                         | UNIDAD 1              | 08-Jun-09  | 23-Jun-09 | 16 DIAS      |           |           | 08-Jun-09 | 12-Jul-09 | 35 DIAS   | Cambio de empaque de Compuerta de Bocatoma                  |  |
|                         | <b>CERRON GRANDE</b>  |            |           |              |           |           |           |           |           |   |  |
|                         | UNIDAD 1              | 20-Jul-09  | 03-Ago-09 | 15 DIAS      | 29-Jun-09 | 13-Jul-09 | 15 DIAS   | 29-Jun-09 | 13-Jul-09 | 15 DIAS   | Inspección de Rodete y ajuste de álabes del distribuidor         |
|                         | UNIDAD 2              | 25-Jun-09  | 16-Jul-09 | 22 DIAS      | 14-Jul-09 | 04-Ago-09 | 22 DIAS   | 14-Jul-09 | 18-Ago-09 | 36 DIAS   | Mantenimiento mayor  |
|                         | <b>5 DE NOVIEMBRE</b> |            |           |              |           |           |           |           |           |   |  |
|                         | UNIDAD 1              | 23-May-09  | 07-Jun-09 | 16 DIAS      |           |           | 23-May-09 | 08-Jun-09 | 17 DIAS   | Mantenimiento mayor   |  |
|                         | UNIDAD 2              | 11-Abr-09  | 13-Abr-09 | 3 DIAS       | 05-Abr-09 | 08-Abr-09 | 4 DIAS    | 05-Abr-09 | 10-Abr-09 | 6 DIAS  | Sustitución guía de Turbina                                      |
|                         | UNIDAD 3              | 03-May-09  | 17-May-09 | 15 DIAS      |           |           |           | 03-May-09 | 17-May-09 | 15 DIAS   | Mantenimiento mayor  |
|                         | UNIDAD 4              | 20-Abr-09  | 28-Abr-09 | 9 DIAS       |           |           |           | 20-Abr-09 | 29-Abr-09 | 10 DIAS   | Inspección del Generador   |
| <b>15 DE SEPTIEMBRE</b> |                       |            |           |              |           |           |           |           |           |   |  |
| UNIDAD 1                |                       |            |           |              |           |           |           |           |           | Mantenimiento mayor y pendientes de Garantía                |  |
| UNIDAD 2                | 19-Ene-09             | 31-Ene-09  | 13 DIAS   |              |           |           | 19-Ene-09 | 30-Ene-09 | 12 DIAS   | Mantenimiento menor y cambio de sellos de álabes de Turbina |  |
| LA GEO                  | <b>AHUACHAPAN</b>     |            |           |              |           |           |           |           |           |   |  |
|                         | UNIDAD 3              | 05-Jul-09  | 24-Jul-09 | 20 DIAS      | 27-Sep-09 | 01-Nov-09 | 36 DIAS   |           |           |   | Mantenimiento mayor  |
|                         | UNIDAD 2              | 20-Sep-09  | 31-Oct-09 | 42 DIAS      | 25-Oct-09 | 22-Nov-09 | 29 DIAS   |           |           |   | Mantenimiento mayor, revisión anual. Diferido al 2010            |
|                         | <b>BERLIN</b>         |            |           |              |           |           |           |           |           |   |  |
|                         | UNIDAD 3              | 12-Ene-09  | 31-Ene-09 | 20 DIAS      | 01-Feb-09 | 02-Mar-09 | 30 DIAS   | 01-Feb-09 | 15-Abr-09 | 74 DIAS   | Mantenimiento mayor  |
|                         | UNIDAD 2              | 30-Ago-09  | 19-Sep-09 | 21 DIAS      | 05-Sep-09 | 20-Sep-09 | 16 DIAS   | 05-Sep-09 | 19-Sep-09 | 15 DIAS   | Mantenimiento mayor  |
|                         | UNIDAD 4              | 18-Oct-09  | 31-Oct-09 | 14 DIAS      | 05-Sep-09 | 14-Sep-09 | 10 DIAS   | 05-Sep-09 | 22-Sep-09 | 18 DIAS   | Mantenimiento mayor, revisión anual                              |
|                         | <b>ACAJUTLA</b>       |            |           |              |           |           |           |           |           |   |  |
|                         | MOTOR 8               | 01-Feb-09  | 02-Mar-09 | 30 DIAS      | 04-May-09 | 30-May-09 | 27 DIAS   | 04-May-09 | 27-May-09 | 24 DIAS   | Mantenimiento de 48,000 Hrs.                                     |
|                         | MOTOR 9               | 05-Abr-09  | 04-May-09 | 30 DIAS      |           |           |           |           |           |   | Mantenimiento de 48,000 Hrs.                                     |
| MOTOR 7                 | 31-May-09             | 29-Jun-09  | 30 DIAS   |              |           |           |           |           |           | Mantenimiento de 48,000 Hrs.                                |  |
| MOTOR 5                 | 02-Ago-09             | 31-Ago-09  | 30 DIAS   | 04-Oct-09    | 15-Nov-09 | 43 DIAS   |           |           |           | Mantenimiento de 48,000 Hrs.                                |  |
| UNIDAD 2                | 01-Sep-09             | 26-Sep-09  | 26 DIAS   |              |           |           |           |           |           | Mantenimiento de Caldera y Auxiliares.                      |  |
| UNIDAD 4                | 09-Feb-09             | 28-Feb-09  | 20 DIAS   | 08-Jun-09    | 27-Jun-09 | 20 DIAS   |           |           |           | Mantenimiento de Turbina y Sistema de Combustión.           |  |
| MOTOR 1                 | 04-Oct-09             | 02-Nov-09  | 30 DIAS   |              |           |           |           |           |           | Mantenimiento de 60,000 Hrs.                                |  |
| <b>SOYAPANGO</b>        |                       |            |           |              |           |           |           |           |           |   |  |
| MOTOR 1                 | 04-May-09             | 24-May-09  | 21 DIAS   |              |           |           |           |           |           | Mantenimiento de 16,000 Hrs.                                |  |
| MOTOR 2                 |                       |            |           |              |           |           |           |           |           |   |  |
| MOTOR 3                 |                       |            |           |              |           |           |           |           |           |   |  |
| CENERGICA               | <b>NEJAPA POWER</b>   |            |           |              |           |           |           |           |           |   |  |
|                         | MOTORES               |            |           |              |           |           |           |           |           |   | El 75% de las semanas del año, tendran en Mantenimiento un motor |
| CESSA                   | <b>CESSA</b>          |            |           |              |           |           |           |           |           |   |  |
|                         | MOTOR 5               | 09-Mar-09  | 14-Mar-09 | 6 DIAS       | 23-Feb-09 | 03-Mar-09 | 9 DIAS    | 23-Feb-09 | 03-Mar-09 | 9 DIAS  | Mantenimiento del motor  |
|                         | MOTORES               | 06-Jul-09  | 08-Ago-09 | 34 DIAS      | 10-Ago-09 | 10-Sep-09 | 32 DIAS   | 10-Ago-09 | 06-Sep-09 | 28 DIAS   | Mantenimiento en los motores                                     |
| INE                     | <b>TALNIQUE</b>       |            |           |              |           |           |           |           |           |   |  |
|                         | MOTORES               |            |           |              |           |           |           |           |           |   |  |
| TEXTUFIL                | <b>TEXTUFIL</b>       |            |           |              |           |           |           |           |           |   |  |
|                         | MOTOR 5               | 02-Mar-09  | 08-Mar-09 | 7 DIAS       | 08-Abr-09 | 14-Abr-09 | 7 DIAS    | 04-Abr-09 | 08-Abr-09 | 5 DIAS  | Mantenimiento de 7,500 Hrs.                                      |
|                         | MOTOR 4               | 16-Mar-09  | 22-Mar-09 | 7 DIAS       | 06-Jul-09 | 31-Jul-09 | 26 DIAS   |           |           |   | Mantenimiento de 15,000 Hrs.                                     |
|                         | MOTOR 2               | 25-May-09  | 31-May-09 | 7 DIAS       | 08-Jul-09 | 14-Jul-09 | 7 DIAS    |           |           |   | Mantenimiento de 7,500 Hrs.                                      |
|                         | MOTOR 1               | 22-Jun-09  | 29-Jun-09 | 8 DIAS       | 21-Sep-09 | 02-Oct-09 | 12 DIAS   |           |           |   | Mantenimiento de 7,500 Hrs.                                      |
|                         | MOTOR 6               | 01-Sep-09  | 10-Sep-09 | 10 DIAS      | 01-Oct-09 | 10-Oct-09 | 10 DIAS   |           |           |   | Mantenimiento de 15,000 Hrs.                                     |
|                         | MOTOR 7               | 21-Sep-09  | 30-Sep-09 | 10 DIAS      | 13-Oct-09 | 22-Oct-09 | 10 DIAS   |           |           |   | Mantenimiento de 15,000 Hrs.                                     |
| MOTOR 3                 | 12-Oct-09             | 19-Oct-09  | 8 DIAS    | 03-Nov-09    | 09-Nov-09 | 7 DIAS    |           |           |           | Mantenimiento de 7,500 Hrs.                                 |  |



Km. 12 1/2 Carretera al Puerto de la Libertad, Nuevo Cuscatlán,  
Departamento de La Libertad.  
Tel.: (503) 2247-7300 Fax: (503) 2247-7301  
Correo: [mercado@ut.com.sv](mailto:mercado@ut.com.sv)  
[www.ut.com.sv](http://www.ut.com.sv)