



Unidad de Transacciones, S.A.

# Informe Estadístico Julio - 2009

Administrador del Mercado Mayorista  
de Electricidad de El Salvador  
Km. 12 1/2 Carretera al Puerto de La Libertad  
Nuevo Cuscatlán, Departamento de La Libertad  
Tel.: (503) 2247-7300 Fax: (503) 2247-7301  
[www.ut.com.sv](http://www.ut.com.sv)



|  | Pág. |
|--|------|
| Indice   | 2    |
| Referencias  | 3    |
| Resumen  | 4    |
| Inyecciones  | 5    |
| Comportamiento de la demanda de energía                    | 5    |
| ♦ Tasa de variación anual (promedio móvil 12 meses)        | 5    |
| ♦ Tasa de variación anual (promedio móvil 6 meses)         | 5    |
| ♦ Tasa de variación anual (promedio móvil 3 meses)         | 5    |
| Inyecciones por recurso                                    | 6    |
| Inyección nacional por participante de mercado             | 6    |
| Contratos de inyección                                     | 6    |
| Composición del mercado                                    | 7    |
| Mercado de Contratos de Retiro por participante de mercado | 7    |
| Mercado Regulador del Sistema por participante de mercado  | 7    |
| Comercio Internacional                                     | 8    |
| ♦ Importaciones por participante de mercado                | 8    |
| ♦ Exportaciones por participante de mercado                | 8    |
| ♦ Comercio Internacional por frontera                      | 8    |
| Evolución de los precios en el MRS                         | 9    |
| ♦ Precios SIS  | 10   |
| ♦ Precios EST  | 11   |
| ♦ Precios MRS  | 12   |
| ♦ Precios promedios  | 13   |
| Otras Estadísticas   | 14   |
| ♦ Energía No Servida, Pérdidas e Interrupciones            | 14   |
| ♦ Generación Obligada                                      | 15   |
| ♦ Demanda Máxima de Potencia                               | 15   |
| ♦ Reserva Fría por Confiabilidad                           | 16   |
| ♦ Reserva Rodante y Reserva Fría en Demanda Máxima         | 17   |
| ♦ Interrupciones del Servicio                              | 18   |
| ♦ Programa Anual de Mantenimientos (PAM)                   | 28   |



### Referencias

- Variación Mensual: Relación entre el mes actual y el mes anterior.
- Variación Anual: Relación entre el mes actual y el mismo mes del año anterior.
- Acumulado Anual: Relación del promedio acumulado del año y el mismo período del año anterior.
- Variación de 3 meses: Relación entre el promedio móvil de 3 meses del período actual y el mismo período del año anterior.
- Variación de 12 meses: Relación entre el promedio móvil de 12 meses del período actual y el mismo período del año anterior.

## Resumen

| <b>Energía Transada</b>               |                                       | <b>GWh</b>       | <b>%</b>               |
|---------------------------------------|---------------------------------------|------------------|------------------------|
|                                       | Hidroeléctrica                        | 166.0            | 33.8%                  |
|                                       | Geotérmica                            | 129.9            | 26.4%                  |
|                                       | Térmica                               | 181.6            | 36.9%                  |
|                                       | Importaciones                         | 12.1             | 2.5%                   |
|                                       | Desvíos                               | 2.2              | 0.4%                   |
| <b>Total inyecciones MME</b>          |                                       | <b>491.8</b>     | <b>100.0%</b>          |
| (-)                                   | Exportaciones                         | 9.7              |                        |
|                                       | Desvíos                               | 0.6              |                        |
|                                       | Pérdidas de transmisión <sup>1/</sup> | 8.6              | 1.8%                   |
|                                       |                                       | <b>472.8</b>     |                        |
| <b>Demanda MME</b>                    |                                       | <b>GWh</b>       | <b>%</b>               |
|                                       | Mercado de Contratos                  | 171.7            | 36%                    |
|                                       | Mercado Regulador del Sistema         | 301.0            | 64%                    |
| <b>Total Demanda en el MME</b>        |                                       | <b>472.8</b>     | <b>100.0%</b>          |
| <b>Energía de Paso</b>                |                                       | <b>Retiro</b>    | <b>Inyección</b>       |
|                                       | Guatemala                             | 0.5              | 0.5                    |
|                                       | Honduras                              | 0.5              | 0.5                    |
| <b>Precios MRS</b>                    |                                       | <b>\$/MWh</b>    |                        |
| <b>Promedio mensual <sup>2/</sup></b> |                                       | <b>\$ 113.60</b> |                        |
| <b>Demanda Máxima de Potencia</b>     |                                       | <b>MW</b>        | <b>Fecha/hora</b>      |
|                                       | Máxima                                | <b>895</b>       | <b>20-Jul-09 15:00</b> |
|                                       | Mínima                                | <b>415</b>       | <b>12-Jul-09 5:30</b>  |

1/ Como porcentaje de la inyección.

2/ Nota: a partir del 21 de abril 2005, los precios de compra en el MRS se han calculado en base al Acuerdo No. 78-E-2005 y sus respectivas modificaciones, emitidas por la Superintendencia General de Electricidad y Telecomunicaciones.

### Inyecciones

| Rubros   | Julio 2009   |                      | Var. %              | Acumulado Anual <sup>2/</sup> |            | Últimos 3 meses <sup>2/</sup> |             | Últimos 12 meses <sup>2/</sup> |            |
|--|--------------|----------------------|---------------------|-------------------------------|------------|-------------------------------|-------------|--------------------------------|------------|
|  | GWh          | Var. % <sup>2/</sup> | Anual <sup>2/</sup> | GWh                           | Var. %     | GWh                           | Var. %      | GWh                            | Var. %     |
| Generación nacional transada                     | 477.5        | 1.7                  | -1.8                | 3,134.0                       | -3.8       | 466.4                         | -2.8        | 454.1                          | -0.7       |
| Intercambios Internacionales (+/-) <sup>1/</sup> | 3.9          | -130.0               | -151.3              | 118.2                         | 4,143.4    | 3.5                           | -211.2      | 9.1                            | 989.9      |
| Pérdidas de transmisión                          | 8.6          | -3.2                 | -8.0                | 53.8                          | 0.1        | 8.5                           | 6.6         | 8.0                            | -0.9       |
| <b>Demanda Mercado Mayorista</b>                 | <b>472.8</b> | <b>4.2</b>           | <b>0.0</b>          | <b>3,210.5</b>                | <b>0.1</b> | <b>462.6</b>                  | <b>-1.6</b> | <b>456.5</b>                   | <b>1.3</b> |

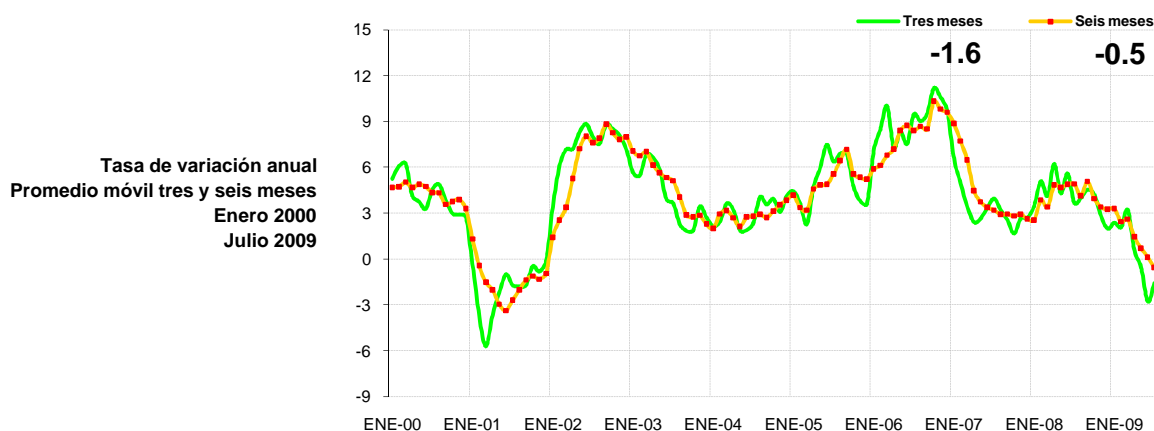
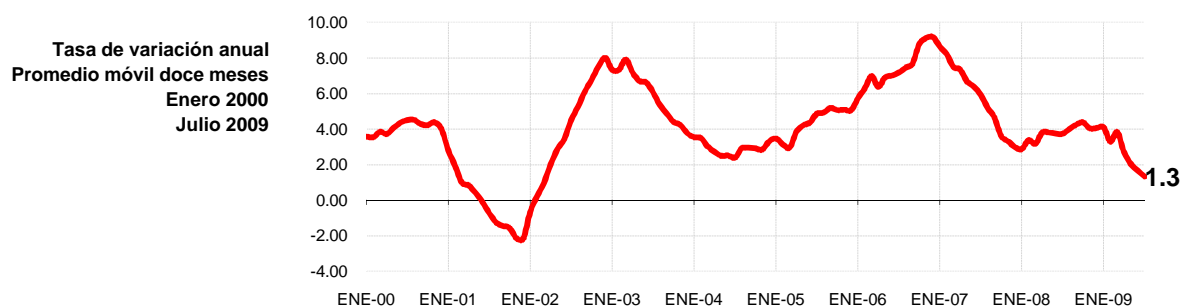
<sup>1/</sup> Signo (+) : Saldo comercial neto a favor de importaciones

Signo (-) : Saldo comercial neto a favor de exportaciones

Incluye desvíos

<sup>2/</sup> Para el detalle de los períodos ver el apartado de Referencias de la Pág. 3.

### Comportamiento de la demanda de energía en el Mercado Mayorista de Electricidad



## Inyecciones Por Recurso Inyectado

| Participante de mercado | Julio 2009   |                      | Var. %              | Acumulado Anual <sup>2/</sup> |        | Últimos 3 meses <sup>2/</sup> |        | Últimos 12 meses <sup>2/</sup> |        |
|-------------------------|--------------|----------------------|---------------------|-------------------------------|--------|-------------------------------|--------|--------------------------------|--------|
|                         | GWh          | Var. % <sup>2/</sup> | Anual <sup>2/</sup> | GWh                           | Var. % | GWh                           | Var. % | GWh                            | Var. % |
| Hidroeléctrica          | 166.0        | -14.2                | -18.9               | 919.6                         | 4.1    | 165.5                         | 8.7    | 172.5                          | 15.7   |
| Geotérmica              | 129.9        | 5.6                  | 10.9                | 811.9                         | -3.0   | 126.5                         | 7.8    | 116.4                          | 2.5    |
| Térmica                 | 181.6        | 18.7                 | 10.6                | 1,402.5                       | -8.7   | 174.3                         | -17.1  | 165.3                          | -15.2  |
| Iny. Nacional           | 477.5        |                      |                     |                               |        |                               |        |                                |        |
| Importaciones           | 12.1         | 260.2                | 316.0               | 143.8                         | 279.0  | 11.4                          | 469.8  | 15.8                           | 263.7  |
| <b>Total inyectado</b>  | <b>489.6</b> |                      |                     |                               |        |                               |        |                                |        |

<sup>1/</sup> Incluye pérdidas por transmisión

<sup>2/</sup> Para el detalle de los períodos ver el apartado de Referencias de la Pág. 3.

## Inyección Nacional por Participante de Mercado

| Participante de mercado | Julio 2009   |                      | Var. %              | Acumulado Anual <sup>2/</sup> |        | Últimos 3 meses <sup>2/</sup> |         | Últimos 12 meses <sup>2/</sup> |        |
|-------------------------|--------------|----------------------|---------------------|-------------------------------|--------|-------------------------------|---------|--------------------------------|--------|
|                         | GWh          | Var. % <sup>2/</sup> | Anual <sup>2/</sup> | GWh                           | Var. % | GWh                           | Var. %  | GWh                            | Var. % |
| Cel                     | 166.0        | -14.2%               | -18.9%              | 919.6                         | 3.6%   | 165.5                         | 8.7%    | 172.5                          | 15.7%  |
| Nejapa Power            | 37.0         | 31.1%                | -10.9%              | 279.8                         | -34.5% | 35.0                          | -45.2%  | 30.5                           | -46.1% |
| Duke Energy             | 52.8         | 24.5%                | -31.5%              | 419.4                         | -27.6% | 53.2                          | -40.9%  | 51.5                           | -33.7% |
| LaGeo                   | 129.9        | 5.6%                 | 10.9%               | 811.9                         | -6.3%  | 126.5                         | 7.8%    | 116.4                          | 2.5%   |
| Cessa                   | 4.5          | 94.5%                | 104.9%              | 52.0                          | 72.5%  | 4.1                           | -13.7%  | 6.6                            | 72.5%  |
| Cassa                   | 0.0          | 0.0%                 | 0.0%                | 75.6                          | 7.4%   | 0.0                           | -       | 16.9                           | 9.3%   |
| Textufile               | 14.4         | 6.1%                 | 0.2%                | 128.4                         | 44.9%  | 15.9                          | 6.7%    | 16.1                           | 20.4%  |
| Ine, S.A.               | 59.3         | 9%                   | 204%                | 287.2                         | 18.5%  | 53.2                          | 113.3%  | 33.4                           | 19.4%  |
| AES Clesa               | 0.0          | 1078%                | 110%                | 0.1                           | -12.2% | 0.0                           | 21.2%   | 0.0                            | -50.0% |
| Borealis                | 6.2          | 47%                  | 9%                  | 41.6                          | -12.4% | 4.7                           | -30.7%  | 5.5                            | -12.6% |
| Gecsa                   | 3.3          | -29%                 | -3%                 | 36.0                          | -3.1%  | 4.5                           | -6.3%   | 4.6                            | -13.3% |
| Inmobiliaria Apopa      | 4.0          | 22%                  | 1178%               | 27.6                          | -      | 3.7                           | 1068.9% | 3.4                            | 986.6% |
| Ing. El Angel           | 0.0          | 0%                   | 0%                  | 43.8                          | -      | -                             | 0.0%    | 10.0                           | -      |
| Ing. La Cabaña          | 0.0          | 0%                   | 0%                  | 11.0                          | -      | -                             | 0.0%    | 2.6                            | -      |
| <b>Total</b>            | <b>477.5</b> |                      |                     |                               |        |                               |         |                                |        |

<sup>1/</sup> Inyecciones provenientes de la red de distribución

<sup>2/</sup> Para el detalle de los períodos ver el apartado de Referencias de la Pág. 3.

\*/ Variaciones mayores de 2000% no se detallan

## Tipo de Mercado (GWh)

| Mercado      | Ene          | Feb          | Mar          | Abr          | May          | Jun          | Jul          | Ago        | Sep        | Oct        | Nov        | Dic        | Total          |
|--------------|--------------|--------------|--------------|--------------|--------------|--------------|--------------|------------|------------|------------|------------|------------|----------------|
| MC           | 164.8        | 152.0        | 169.2        | 160.7        | 165.2        | 167.5        | 171.7        |            |            |            |            |            | 1,151.1        |
| MRS          | 300.1        | 276.1        | 307.6        | 292.1        | 296.4        | 286.1        | 301.0        |            |            |            |            |            | 2,059.4        |
| <b>Total</b> | <b>464.9</b> | <b>428.2</b> | <b>476.8</b> | <b>452.8</b> | <b>461.5</b> | <b>453.6</b> | <b>472.8</b> | <b>0.0</b> | <b>0.0</b> | <b>0.0</b> | <b>0.0</b> | <b>0.0</b> | <b>3,210.5</b> |

MC: Mercado de Contratos

MRS: Mercado Regulador del Sistema

## Contratos de Inyección (GWh)

| Participante de mercado | Ene          | Feb          | Mar          | Abr          | May          | Jun          | Jul          | Ago        | Sep        | Oct        | Nov        | Dic        | Total          |
|-------------------------|--------------|--------------|--------------|--------------|--------------|--------------|--------------|------------|------------|------------|------------|------------|----------------|
| Excelergy               | 6.4          | 4.9          | 5.4          | 4.7          | 5.8          | 13.4         | 18.0         |            |            |            |            |            | 58.8           |
| Cenérgica               | 0.0          | 0.0          | 0.0          | 0.0          | 0.0          | 0.0          | 0.0          |            |            |            |            |            | 0.0            |
| Origem                  | 0.0          | 0.0          | 0.0          | 0.0          | 0.0          | 7.2          | 18.7         |            |            |            |            |            | 25.9           |
| Caess                   | 0.0          | 0.0          | 0.0          | 0.0          | 0.0          | 0.0          | 0.0          |            |            |            |            |            | 0.0            |
| Delsur                  | 0.0          | 0.0          | 1.4          | 0.5          | 0.0          | 0.0          | 0.0          |            |            |            |            |            | 1.9            |
| AES Clesa               | 0.0          | 0.0          | 0.0          | 0.0          | 0.0          | 0.0          | 0.0          |            |            |            |            |            | 0.0            |
| Cel                     | 28.7         | 25.9         | 28.4         | 25.5         | 28.3         | 27.8         | 28.7         |            |            |            |            |            | 193.2          |
| Nejapa                  | 34.3         | 52.4         | 57.8         | 56.1         | 58.0         | 59.2         | 51.6         |            |            |            |            |            | 369.3          |
| Duke Energy             | 0.0          | 0.0          | 0.0          | 0.0          | 0.0          | 0.0          | 0.0          |            |            |            |            |            | 0.0            |
| LaGeo                   | 87.8         | 60.9         | 67.8         | 65.7         | 67.9         | 65.7         | 61.2         |            |            |            |            |            | 477.1          |
| Cessa                   | 0.2          | 0.2          | 0.2          | 0.2          | 0.2          | 0.2          | 0.2          |            |            |            |            |            | 1.4            |
| Cassa                   | 0.0          | 0.0          | 0.0          | 0.0          | 0.0          | 0.0          | 0.0          |            |            |            |            |            | 0.0            |
| Lynx                    | 0.0          | 0.0          | 0.0          | 0.0          | 0.0          | 0.0          | 0.0          |            |            |            |            |            | 0.0            |
| Merc-Elec               | 0.2          | 0.1          | 0.5          | 1.1          | 3.0          | 11.7         | 5.8          |            |            |            |            |            | 22.4           |
| Textufile               | 0.0          | 0.0          | 0.0          | 0.0          | 0.0          | 6.5          | 11.2         |            |            |            |            |            | 17.7           |
| Ine-Com                 | 0.0          | 0.0          | 0.0          | 0.0          | 0.0          | 0.0          | 0.0          |            |            |            |            |            | 0.0            |
| Borealis                | 8.1          | 7.8          | 8.2          | 8.0          | 5.2          | 5.7          | 7.5          |            |            |            |            |            | 50.5           |
| Gecsa                   | 0.0          | 0.0          | 0.0          | 0.0          | 0.0          | 0.0          | 0.0          |            |            |            |            |            | 0.0            |
| CECAM                   | 0.0          | 0.0          | 0.0          | 0.0          | 0.8          | 2.5          | 0.7          |            |            |            |            |            | 4.0            |
| C.X. <sup>1/</sup>      | -1.0         | -0.1         | -0.5         | -1.2         | -4.2         | -32.4        | -31.7        |            |            |            |            |            | -71.0          |
| <b>Total</b>            | <b>164.8</b> | <b>152.0</b> | <b>169.2</b> | <b>160.7</b> | <b>165.1</b> | <b>167.5</b> | <b>171.7</b> | <b>0.0</b> | <b>0.0</b> | <b>0.0</b> | <b>0.0</b> | <b>0.0</b> | <b>1,151.1</b> |

<sup>1/</sup> CX: Contratos de Exportación

## Retiros

## Mercado de Contratos de Retiro por Participante de Mercado (GWh)

| Participante de Mercado | Ene          | Feb          | Mar          | Abr          | May          | Jun          | Jul          | Ago        | Sep        | Oct        | Nov        | Dic        | Total          |
|-------------------------|--------------|--------------|--------------|--------------|--------------|--------------|--------------|------------|------------|------------|------------|------------|----------------|
| CAESS                   | 37.9         | 47.1         | 52.0         | 50.5         | 52.2         | 50.5         | 47.7         |            |            |            |            |            | 337.9          |
| DELSUR                  | 66.3         | 41.9         | 47.4         | 45.1         | 43.0         | 42.3         | 45.3         |            |            |            |            |            | 331.4          |
| CLESA                   | 13.1         | 16.5         | 18.2         | 17.7         | 18.3         | 17.7         | 16.7         |            |            |            |            |            | 118.2          |
| EEO                     | 5.1          | 7.9          | 8.7          | 8.4          | 8.7          | 14.9         | 18.7         |            |            |            |            |            | 72.5           |
| DEUSEM                  | 1.0          | 1.6          | 1.7          | 1.7          | 1.7          | 1.7          | 1.5          |            |            |            |            |            | 11.0           |
| Edesal                  | 0.0          | 0.0          | 0.4          | 0.4          | 0.5          | 0.5          | 0.5          |            |            |            |            |            | 2.2            |
| CEL-COM                 | 0.3          | 0.3          | 0.3          | 0.3          | 0.3          | 0.3          | 0.3          |            |            |            |            |            | 2.1            |
| LAGEO-COM               | 0.0          | 0.0          | 0.0          | 0.0          | 0.0          | 0.0          | 0.0          |            |            |            |            |            | 0.0            |
| EXCELERGY               | 12.4         | 11.0         | 12.1         | 11.2         | 12.2         | 12.0         | 12.5         |            |            |            |            |            | 83.3           |
| ORIGEM                  | 0.0          | 0.0          | 0.0          | 0.0          | 0.0          | 0.0          | 0.0          |            |            |            |            |            | 0.0            |
| ANDA                    | 28.4         | 25.6         | 28.1         | 25.2         | 28.1         | 27.5         | 28.4         |            |            |            |            |            | 191.2          |
| LYNX                    | 0.0          | 0.0          | 0.0          | 0.0          | 0.0          | 0.0          | 0.0          |            |            |            |            |            | 0.0            |
| CESSA                   | 0.2          | 0.2          | 0.2          | 0.2          | 0.2          | 0.2          | 0.2          |            |            |            |            |            | 1.4            |
| MERC-ELECT              | 0.0          | 0.0          | 0.0          | 0.0          | 0.0          | 0.0          | 0.0          |            |            |            |            |            | 0.0            |
| ABRUZZO                 | 0.0          | 0.0          | 0.0          | 0.0          | 0.0          | 0.0          | 0.0          |            |            |            |            |            | 0.0            |
| OTROS                   | 0.0          | 0.0          | 0.0          | 0.0          | 0.0          | 0.0          | 0.0          |            |            |            |            |            | 0.0            |
| <b>Total MC</b>         | <b>164.8</b> | <b>152.0</b> | <b>169.2</b> | <b>160.7</b> | <b>165.2</b> | <b>167.5</b> | <b>171.7</b> | <b>0.0</b> | <b>0.0</b> | <b>0.0</b> | <b>0.0</b> | <b>0.0</b> | <b>1,151.1</b> |

Los valores negativos corresponden a desviaciones de contratos inyectadas al MRS.

## Mercado Regulador del Sistema por Participante de Mercado (GWh)

| Participante de Mercado | Ene          | Feb          | Mar          | Abr          | May          | Jun          | Jul          | Ago        | Sep        | Oct        | Nov        | Dic        | Total          |
|-------------------------|--------------|--------------|--------------|--------------|--------------|--------------|--------------|------------|------------|------------|------------|------------|----------------|
| CAESS                   | 144.0        | 122.0        | 147.1        | 127.7        | 132.8        | 135.3        | 145.4        |            |            |            |            |            | 954.2          |
| DELSUR                  | 35.1         | 53.9         | 47.8         | 56.7         | 60.3         | 57.2         | 60.4         |            |            |            |            |            | 371.3          |
| CLESA                   | 59.8         | 49.2         | 54.7         | 53.4         | 52.5         | 50.5         | 53.9         |            |            |            |            |            | 374.0          |
| EEO                     | 41.4         | 33.6         | 39.1         | 39.9         | 38.2         | 29.5         | 27.8         |            |            |            |            |            | 249.6          |
| DEUSEM                  | 9.4          | 8.1          | 8.8          | 8.7          | 9.0          | 8.3          | 9.1          |            |            |            |            |            | 61.5           |
| B&D                     | 0.5          | 0.6          | 0.6          | 0.5          | 0.6          | 2.0          | 2.1          |            |            |            |            |            | 6.9            |
| Edesal                  | 7.0          | 6.2          | 6.6          | 1.3          | 0.5          | 0.7          | 0.7          |            |            |            |            |            | 23.2           |
| EXCELERFY               | 0.0          | -0.4         | -0.1         | -0.2         | -0.1         | 0.0          | -0.1         |            |            |            |            |            | -1.0           |
| CEL-COM                 | 0.0          | 0.0          | 0.0          | 0.0          | 0.0          | 0.0          | 0.0          |            |            |            |            |            | 0.0            |
| LAGEO-COM               | 0.0          | 0.0          | 0.0          | 0.0          | 0.0          | 0.0          | 0.0          |            |            |            |            |            | 0.0            |
| Cenergica               | 0.0          | 0.0          | 0.0          | 0.0          | 0.0          | 0.0          | 0.0          |            |            |            |            |            | 0.0            |
| MER-ELEC                | 0.0          | 0.0          | 0.0          | 0.0          | 0.0          | 0.0          | 0.0          |            |            |            |            |            | 0.0            |
| ORIGEM                  | 0.0          | 0.0          | 0.0          | 0.0          | 0.0          | 0.0          | 0.0          |            |            |            |            |            | 0.0            |
| LYNX                    | 0.0          | 0.0          | 0.0          | 0.0          | 0.0          | 0.0          | 0.0          |            |            |            |            |            | 0.0            |
| Abruzzo                 | 0.0          | 0.0          | 0.0          | 0.0          | 0.0          | 0.0          | 0.0          |            |            |            |            |            | 0.2            |
| Edesal-Com              | 0.6          | 0.6          | 0.6          | 0.6          | 0.6          | 0.6          | 0.7          |            |            |            |            |            | 4.4            |
| Ine-Com                 | 0.0          | 0.0          | 0.0          | 0.0          | 0.0          | 0.0          | 0.0          |            |            |            |            |            | 0.0            |
| Borealis                | 0.0          | 0.0          | 0.0          | 0.0          | 0.0          | 0.0          | 0.0          |            |            |            |            |            | 0.0            |
| Gecsa                   | 0.0          | 0.0          | 0.0          | 0.0          | 0.0          | 0.0          | 0.0          |            |            |            |            |            | 0.0            |
| ANDA                    | -1.4         | -1.1         | -1.1         | 0.9          | -2.6         | -1.7         | -1.4         |            |            |            |            |            | -8.3           |
| INVINTER                | 1.8          | 1.9          | 1.5          | 0.7          | 1.9          | 1.2          | 0.1          |            |            |            |            |            | 9.2            |
| CEL                     | 0.3          | 0.3          | 0.3          | 0.3          | 0.2          | 0.1          | 0.1          |            |            |            |            |            | 1.7            |
| Nejapa                  | 0.1          | 0.1          | 0.1          | 0.0          | 0.1          | 0.1          | 0.1          |            |            |            |            |            | 0.8            |
| LAGEO                   | 0.7          | 0.5          | 0.6          | 0.8          | 0.7          | 0.8          | 0.6          |            |            |            |            |            | 4.6            |
| DUKE                    | 0.3          | 0.3          | 0.2          | 0.2          | 0.2          | 0.3          | 0.3          |            |            |            |            |            | 1.8            |
| CESSA                   | 0.0          | 0.0          | 0.0          | 0.0          | 0.2          | 0.2          | 0.1          |            |            |            |            |            | 0.5            |
| CASSA                   | 0.0          | 0.0          | 0.0          | 0.0          | 0.3          | 0.3          | 0.4          |            |            |            |            |            | 1.1            |
| INE                     | 0.0          | 0.0          | 0.0          | 0.0          | 0.0          | 0.0          | 0.0          |            |            |            |            |            | 0.1            |
| Consorcio Int.          | 0.3          | 0.3          | 0.5          | 0.4          | 0.6          | 0.6          | 0.7          |            |            |            |            |            | 3.4            |
| Textufile               | 0.0          | 0.0          | 0.0          | 0.0          | 0.0          | 0.0          | 0.0          |            |            |            |            |            | 0.1            |
| Inm. Apopa              | 0.0          | 0.0          | 0.0          | 0.0          | 0.0          | 0.0          | 0.0          |            |            |            |            |            | 0.0            |
| Desvíos                 |              |              |              |              |              |              |              |            |            |            |            |            | 0.0            |
| <b>Total MRS</b>        | <b>300.1</b> | <b>276.1</b> | <b>307.6</b> | <b>292.1</b> | <b>296.4</b> | <b>286.1</b> | <b>301.0</b> | <b>0.0</b> | <b>0.0</b> | <b>0.0</b> | <b>0.0</b> | <b>0.0</b> | <b>2,059.4</b> |

## Comercio Internacional

## Importaciones por Participante de Mercado (GWh)

| Participante de mercado | Ene         | Feb         | Mar         | Abr         | May         | Jun        | Jul         | Ago        | Sep        | Oct        | Nov        | Dic        | Total        |
|-------------------------|-------------|-------------|-------------|-------------|-------------|------------|-------------|------------|------------|------------|------------|------------|--------------|
| CLESA                   | 0.0         | 0.0         | 0.0         | 0.0         | 0.0         | 0.0        | 0.0         |            |            |            |            |            | 0.0          |
| EXCELERGY               | 2.3         | 5.4         | 6.5         | 1.6         | 4.6         | 0.4        | 1.8         |            |            |            |            |            | 22.6         |
| CENERGICA               | 2.4         | 0.0         | 4.1         | 0.2         | 0.7         | 0.0        | 0.8         |            |            |            |            |            | 8.1          |
| MERCELEC                | 14.2        | 9.3         | 9.0         | 5.7         | 6.4         | 0.7        | 4.2         |            |            |            |            |            | 49.5         |
| ORIGEM                  | 0.6         | 6.7         | 11.2        | 9.6         | 2.3         | 0.8        | 2.9         |            |            |            |            |            | 34.0         |
| LYNX                    | 0.0         | 0.0         | 0.0         | 0.0         | 0.0         | 0.0        | 0.0         |            |            |            |            |            | 0.0          |
| CECAM                   | 1.3         | 5.3         | 6.5         | 5.9         | 5.0         | 1.4        | 2.4         |            |            |            |            |            | 27.7         |
| DELSUR                  | 0.0         | 0.0         | 0.0         | 0.5         | 0.0         | 0.0        | 0.0         |            |            |            |            |            | 0.5          |
| <b>Total</b>            | <b>20.7</b> | <b>26.6</b> | <b>37.3</b> | <b>23.5</b> | <b>18.9</b> | <b>3.3</b> | <b>12.1</b> | <b>0.0</b> | <b>0.0</b> | <b>0.0</b> | <b>0.0</b> | <b>0.0</b> | <b>142.5</b> |

## Exportaciones por Participante de Mercado (GWh)

| Participante de mercado | Ene        | Feb        | Mar        | Abr        | May        | Jun         | Jul        | Ago        | Sep        | Oct        | Nov        | Dic        | Total       |
|-------------------------|------------|------------|------------|------------|------------|-------------|------------|------------|------------|------------|------------|------------|-------------|
| Excelergy               | 0.0        | 0.0        | 0.0        | 0.0        | 0.0        | 0.5         | 0.4        |            |            |            |            |            | 1.1         |
| Cenérgica               | 0.0        | 0.0        | 0.00       | 0.00       | 0.0        | 1.6         | 1.0        |            |            |            |            |            | 2.7         |
| Merelec                 | 0.2        | 0.1        | 0.4        | 1.0        | 2.2        | 5.8         | 1.5        |            |            |            |            |            | 11.3        |
| Origem                  | 0.0        | 0.0        | 0.0        | 0.0        | 0.0        | 2.0         | 6.4        |            |            |            |            |            | 8.4         |
| Lynx                    | 0.0        | 0.0        | 0.0        | 0.0        | 0.0        | 0.0         | 0.0        |            |            |            |            |            | 0.0         |
| Abruzzo                 | 0.0        | 0.0        | 0.0        | 0.0        | 0.0        | 0.0         | 0.0        |            |            |            |            |            | 0.0         |
| Ine-Com                 | 0.0        | 0.0        | 0.0        | 0.0        | 0.0        | 0.0         | 0.0        |            |            |            |            |            | 0.0         |
| Cecam                   | 0.0        | 0.0        | 0.0        | 0.0        | 0.7        | 1.1         | 0.4        |            |            |            |            |            | 2.2         |
| <b>Total</b>            | <b>0.2</b> | <b>0.1</b> | <b>0.5</b> | <b>1.1</b> | <b>3.0</b> | <b>11.1</b> | <b>9.7</b> | <b>0.0</b> | <b>0.0</b> | <b>0.0</b> | <b>0.0</b> | <b>0.0</b> | <b>25.6</b> |

## Comercio Internacional por frontera (GWh)

| Meses        | Guatemala  |             | Honduras    |             | Total       |              |
|--------------|------------|-------------|-------------|-------------|-------------|--------------|
|              | Exportac.  | Importac.   | Exportac.   | Importac.   | Exportac.   | Importac.    |
| ENERO        | 0.00       | 2.32        | 0.24        | 18.29       | 0.2         | 20.6         |
| FEBRERO      | 0.0        | 13.0        | 0.1         | 13.7        | 0.1         | 26.7         |
| MARZO        | 0.0        | 20.9        | 0.5         | 17.8        | 0.5         | 38.7         |
| ABRIL        | 0.0        | 11.4        | 1.1         | 12.1        | 1.1         | 23.5         |
| MAYO         | 0.0        | 3.3         | 3.0         | 15.6        | 3.0         | 18.9         |
| JUNIO        | 2.4        | 0.8         | 8.7         | 2.6         | 11.1        | 3.3          |
| JULIO        | 6.0        | 6.9         | 3.7         | 5.2         | 9.7         | 12.1         |
| AGOSTO       |            |             |             |             | 0.0         | 0.0          |
| SEPTIEMBRE   |            |             |             |             | 0.0         | 0.0          |
| OCTUBRE      |            |             |             |             | 0.0         | 0.0          |
| NOVIEMBRE    |            |             |             |             | 0.0         | 0.0          |
| DICIEMBRE    |            |             |             |             | 0.0         | 0.0          |
| <b>Total</b> | <b>8.4</b> | <b>58.6</b> | <b>17.2</b> | <b>85.2</b> | <b>25.6</b> | <b>143.8</b> |

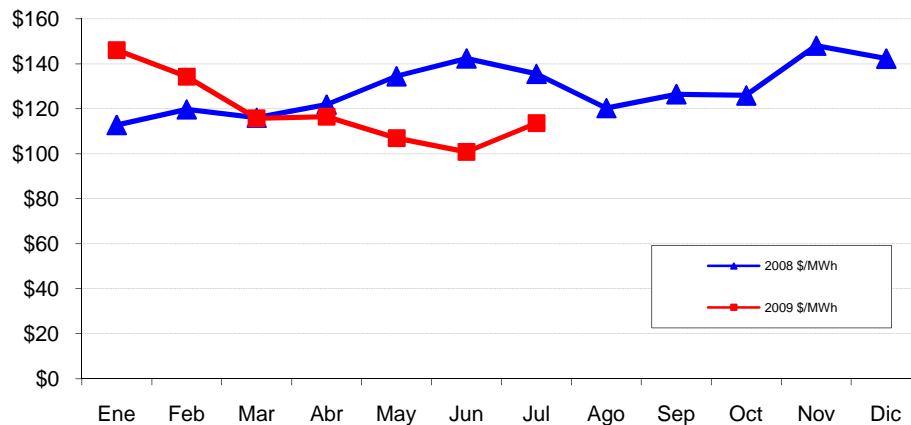


## Evolución de los precios en el MRS

| Mes | Promedio       |                | Variaciones % |        |        | Prom. anual |
|-----|----------------|----------------|---------------|--------|--------|-------------|
|     | 2008<br>\$/MWh | 2009<br>\$/MWh | Mes           | Anual  | Acum.  |             |
| Ene | 112.85         | 146.03         | 2.59          | 29.40  | 2.59   | 131.62      |
| Feb | 119.78         | 134.30         | -8.03         | 12.12  | -5.65  | 132.83      |
| Mar | 116.05         | 115.73         | -13.83        | -0.28  | -18.69 | 132.81      |
| Abr | 121.90         | 116.50         | 0.67          | -4.43  | -18.15 | 132.36      |
| May | 134.53         | 107.00         | -8.16         | -20.46 | -24.83 | 130.06      |
| Jun | 142.42         | 100.79         | -5.80         | -29.23 | -29.19 | 126.59      |
| Jul | 135.54         | 113.60         | 12.71         | -16.19 | -20.19 | 124.77      |
| Ago | 120.34         |                |               |        |        |             |
| Sep | 126.52         |                |               |        |        |             |
| Oct | 125.98         |                |               |        |        |             |
| Nov | 148.07         |                |               |        |        |             |
| Dic | 142.34         |                |               |        |        |             |

Mensual: Relación mes inmediato anterior  
 Anual: Relación igual mes año anterior  
 Acumulada: Relación respecto a diciembre año anterior  
 Promedio anual: Relación últimos doce meses

**Precio Máximo horario:** \$ 164.35 / MWh  
**Precio Mínimo horario:** \$ 68.39 / MWh



## Precios SIS (\$/MWh)

| FECHA     | 0      | 1      | 2      | 3      | 4      | 5      | 6      | 7      | 8      | 9      | 10     | 11     | 12     | 13     | 14     | 15     | 16     | 17     | 18      | 19      | 20      | 21      | 22      | 23     |
|-----------|--------|--------|--------|--------|--------|--------|--------|--------|--------|--------|--------|--------|--------|--------|--------|--------|--------|--------|---------|---------|---------|---------|---------|--------|
| 01-Jul-09 | 69.466 | 69.474 | 69.446 | 69.447 | 69.473 | 78.906 | 90.295 | 91.169 | 91.570 | 91.595 | 91.727 | 91.389 | 91.490 | 91.912 | 91.477 | 91.449 | 91.932 | 91.481 | 99.630  | 110.000 | 110.004 | 99.797  | 95.638  | 69.275 |
| 02-Jul-09 | 69.466 | 69.474 | 69.466 | 69.467 | 69.473 | 78.906 | 90.295 | 91.169 | 91.570 | 91.595 | 91.727 | 91.389 | 91.490 | 91.912 | 91.477 | 91.449 | 91.932 | 91.481 | 99.630  | 110.000 | 110.004 | 99.797  | 95.638  | 69.275 |
| 03-Jul-09 | 69.443 | 69.431 | 68.402 | 68.398 | 69.431 | 69.934 | 92.306 | 92.403 | 92.388 | 92.393 | 92.390 | 92.401 | 92.394 | 92.387 | 92.395 | 92.387 | 92.389 | 92.394 | 99.459  | 110.005 | 110.010 | 99.783  | 97.599  | 69.263 |
| 04-Jul-09 | 69.461 | 69.455 | 69.421 | 69.420 | 69.454 | 69.951 | 92.337 | 92.405 | 92.407 | 92.407 | 92.398 | 92.408 | 92.401 | 92.403 | 92.400 | 92.398 | 92.399 | 92.400 | 99.479  | 110.034 | 110.031 | 99.808  | 98.624  | 69.284 |
| 05-Jul-09 | 69.639 | 69.112 | 69.363 | 69.291 | 68.674 | 69.709 | 91.840 | 91.829 | 90.826 | 91.006 | 91.565 | 91.379 | 91.584 | 91.542 | 91.757 | 91.478 | 91.969 | 91.758 | 98.586  | 110.563 | 110.535 | 98.488  | 96.993  | 68.648 |
| 06-Jul-09 | 69.939 | 69.122 | 69.623 | 69.481 | 68.244 | 70.319 | 91.490 | 91.469 | 89.466 | 89.826 | 90.935 | 90.569 | 90.974 | 90.892 | 91.327 | 90.768 | 91.749 | 91.328 | 97.976  | 110.673 | 110.605 | 99.898  | 96.983  | 68.198 |
| 07-Jul-09 | 69.539 | 69.142 | 69.443 | 69.861 | 67.384 | 69.739 | 92.790 | 92.749 | 92.646 | 92.466 | 92.675 | 92.949 | 92.754 | 92.592 | 92.867 | 92.348 | 92.509 | 92.668 | 99.506  | 110.613 | 110.425 | 99.718  | 96.963  | 67.298 |
| 08-Jul-09 | 69.539 | 69.142 | 69.443 | 69.861 | 67.384 | 69.739 | 92.650 | 92.639 | 91.636 | 91.816 | 92.375 | 92.189 | 92.394 | 92.352 | 92.567 | 92.288 | 92.779 | 92.568 | 99.506  | 110.613 | 110.425 | 99.718  | 96.963  | 67.298 |
| 09-Jul-09 | 69.623 | 69.221 | 69.522 | 69.938 | 69.461 | 69.824 | 92.726 | 92.723 | 92.718 | 92.903 | 92.450 | 92.271 | 92.474 | 92.427 | 92.655 | 92.367 | 92.859 | 92.654 | 99.589  | 110.685 | 110.510 | 99.803  | 97.039  | 69.383 |
| 10-Jul-09 | 69.993 | 69.991 | 69.992 | 69.988 | 69.921 | 69.994 | 92.806 | 92.803 | 92.718 | 92.923 | 92.530 | 92.351 | 92.554 | 92.507 | 92.715 | 92.427 | 92.939 | 92.714 | 99.979  | 110.945 | 110.980 | 99.963  | 98.889  | 69.923 |
| 11-Jul-09 | 69.442 | 69.426 | 68.402 | 68.386 | 69.417 | 69.932 | 92.304 | 92.402 | 92.386 | 92.391 | 92.392 | 92.402 | 92.386 | 92.387 | 92.386 | 92.395 | 92.386 | 92.395 | 99.458  | 109.997 | 109.995 | 99.782  | 97.598  | 69.257 |
| 12-Jul-09 | 69.539 | 69.516 | 68.492 | 68.486 | 69.517 | 70.022 | 92.294 | 92.292 | 92.286 | 92.291 | 92.292 | 92.292 | 92.286 | 92.287 | 92.286 | 92.295 | 92.286 | 92.295 | 99.548  | 110.087 | 110.085 | 99.872  | 97.688  | 69.347 |
| 13-Jul-09 | 69.522 | 69.506 | 68.482 | 68.476 | 69.507 | 70.012 | 92.284 | 92.282 | 92.276 | 92.281 | 92.282 | 92.282 | 92.276 | 92.277 | 92.276 | 92.285 | 92.276 | 92.285 | 99.538  | 110.077 | 110.075 | 88.721  | 86.481  | 64.087 |
| 14-Jul-09 | 68.532 | 68.526 | 68.532 | 68.526 | 68.527 | 78.972 | 92.304 | 92.302 | 92.296 | 92.301 | 92.302 | 92.302 | 92.296 | 92.297 | 92.296 | 92.305 | 92.296 | 92.305 | 92.298  | 109.997 | 109.995 | 96.862  | 66.628  | 68.337 |
| 15-Jul-09 | 68.652 | 68.646 | 68.622 | 68.616 | 68.647 | 78.782 | 92.394 | 92.402 | 92.396 | 92.401 | 92.402 | 92.402 | 92.396 | 92.397 | 92.396 | 92.405 | 92.396 | 92.405 | 92.618  | 110.087 | 110.085 | 97.042  | 67.678  | 68.457 |
| 16-Jul-09 | 68.622 | 68.616 | 68.622 | 68.616 | 68.617 | 79.062 | 88.584 | 88.582 | 90.806 | 92.391 | 92.392 | 92.392 | 89.836 | 92.387 | 92.386 | 92.395 | 87.876 | 87.585 | 92.388  | 110.087 | 110.085 | 95.552  | 66.718  | 68.427 |
| 17-Jul-09 | 69.438 | 69.433 | 68.403 | 68.397 | 69.426 | 69.932 | 92.387 | 92.397 | 92.405 | 92.396 | 92.399 | 92.395 | 92.405 | 92.403 | 92.403 | 92.403 | 92.397 | 92.399 | 92.622  | 109.995 | 109.997 | 99.784  | 97.595  | 69.262 |
| 18-Jul-09 | 69.088 | 69.223 | 69.273 | 69.757 | 67.896 | 69.222 | 92.227 | 92.197 | 93.105 | 92.736 | 92.389 | 92.845 | 92.455 | 92.333 | 92.393 | 92.153 | 91.817 | 92.189 | 99.212  | 110.225 | 110.107 | 98.404  | 97.055  | 67.842 |
| 19-Jul-09 | 70.476 | 70.481 | 70.485 | 70.481 | 70.466 | 70.478 | 94.580 | 94.080 | 94.339 | 94.501 | 94.498 | 94.504 | 94.594 | 94.688 | 94.673 | 94.667 | 86.172 | 85.895 | 100.044 | 110.640 | 110.143 | 93.978  | 94.585  | 70.384 |
| 20-Jul-09 | 71.016 | 71.131 | 71.095 | 71.161 | 70.906 | 70.698 | 94.650 | 93.790 | 93.029 | 92.711 | 92.168 | 92.804 | 92.484 | 92.388 | 92.253 | 92.007 | 91.032 | 92.495 | 99.704  | 109.270 | 109.483 | 100.788 | 94.865  | 69.774 |
| 21-Jul-09 | 69.945 | 69.948 | 69.952 | 69.953 | 69.948 | 69.949 | 92.935 | 92.933 | 92.930 | 92.929 | 92.928 | 92.930 | 92.933 | 92.930 | 92.927 | 92.927 | 92.954 | 92.950 | 101.055 | 111.063 | 111.064 | 101.056 | 94.047  | 69.837 |
| 22-Jul-09 | 69.951 | 69.953 | 69.952 | 69.948 | 69.949 | 69.953 | 94.051 | 94.046 | 94.049 | 94.046 | 94.054 | 94.054 | 94.047 | 94.046 | 94.049 | 94.048 | 92.945 | 92.947 | 101.057 | 110.257 | 110.258 | 101.064 | 94.051  | 69.840 |
| 23-Jul-09 | 69.438 | 69.426 | 69.399 | 69.398 | 69.235 | 69.470 | 93.392 | 93.396 | 93.398 | 93.400 | 93.398 | 93.398 | 93.397 | 93.399 | 93.405 | 93.405 | 93.399 | 93.401 | 101.549 | 110.000 | 110.004 | 100.782 | 98.601  | 69.264 |
| 24-Jul-09 | 69.948 | 69.946 | 69.949 | 69.948 | 69.955 | 69.950 | 94.852 | 94.846 | 94.848 | 94.850 | 94.848 | 94.848 | 94.847 | 94.849 | 94.855 | 94.855 | 94.849 | 94.851 | 101.549 | 110.000 | 110.004 | 100.782 | 98.801  | 69.954 |
| 25-Jul-09 | 69.908 | 69.913 | 69.913 | 69.907 | 69.906 | 70.072 | 94.607 | 94.607 | 94.615 | 94.606 | 94.609 | 94.605 | 94.615 | 94.613 | 94.613 | 94.613 | 94.607 | 94.609 | 101.302 | 110.225 | 110.107 | 101.114 | 100.075 | 70.082 |
| 26-Jul-09 | 69.986 | 69.993 | 69.994 | 69.989 | 69.991 | 69.994 | 94.548 | 94.551 | 94.546 | 94.553 | 94.548 | 94.551 | 94.548 | 94.547 | 94.545 | 94.552 | 94.550 | 94.551 | 101.200 | 110.002 | 109.999 | 100.433 | 98.252  | 69.991 |
| 27-Jul-09 | 69.989 | 69.992 | 69.995 | 69.990 | 69.990 | 69.986 | 94.546 | 94.553 | 94.555 | 94.549 | 94.553 | 94.548 | 94.555 | 94.553 | 94.547 | 94.551 | 94.546 | 94.554 | 101.195 | 109.998 | 110.005 | 100.431 | 98.247  | 69.987 |
| 28-Jul-09 | 69.988 | 69.993 | 69.993 | 69.987 | 69.990 | 69.992 | 94.547 | 94.547 | 94.548 | 94.552 | 94.554 | 94.554 | 94.555 | 94.547 | 94.551 | 94.549 | 94.551 | 94.552 | 101.204 | 109.998 | 110.003 | 100.427 | 98.249  | 69.986 |
| 29-Jul-09 | 69.908 | 69.913 | 69.913 | 69.907 | 69.906 | 70.072 | 91.967 | 91.967 | 91.985 | 91.976 | 91.979 | 91.975 | 91.985 | 91.983 | 91.983 | 91.983 | 91.977 | 91.979 | 101.302 | 110.315 | 110.197 | 101.114 | 91.985  | 70.082 |
| 30-Jul-09 | 63.598 | 63.603 | 63.543 | 63.497 | 63.590 | 63.682 | 87.907 | 82.557 | 94.178 | 94.142 | 94.144 | 94.124 | 94.015 | 93.947 | 93.941 | 93.929 | 93.941 | 94.062 | 101.294 | 110.218 | 110.373 | 100.917 | 84.529  | 63.416 |
| 31-Jul-09 | 62.550 | 62.567 | 62.520 | 62.480 | 62.617 | 62.713 | 87.214 | 70.007 | 94.741 | 94.789 | 95.316 | 95.830 | 95.816 | 95.975 | 95.941 | 95.782 | 92.967 | 93.521 | 100.855 | 108.859 | 108.863 | 99.768  | 83.267  | 62.157 |

|  |    |         |
|--|----|---------|
| Precio mínimo de la serie              | \$ | 62.157  |
| Precio máximo de la serie              | \$ | 111.064 |
| Precio promedio aritmético de la serie | \$ | 87.869  |

## Precios EST (\$/MWh)

| FECHA     | 0      | 1      | 2      | 3      | 4      | 5      | 6      | 7      | 8      | 9      | 10     | 11     | 12     | 13     | 14     | 15     | 16     | 17     | 18     | 19     | 20     | 21     | 22     | 23     |
|-----------|--------|--------|--------|--------|--------|--------|--------|--------|--------|--------|--------|--------|--------|--------|--------|--------|--------|--------|--------|--------|--------|--------|--------|--------|
| 01-Jul-09 | 1.207  | 0.000  | 0.000  | 0.000  | 0.000  | 2.005  | 2.005  | 4.554  | 19.228 | 27.379 | 36.941 | 35.180 | 29.650 | 37.231 | 39.466 | 37.612 | 27.341 | 16.148 | 17.432 | 22.245 | 14.933 | 13.706 | 5.268  | 3.053  |
| 02-Jul-09 | 4.191  | 3.273  | 3.137  | 2.410  | 2.553  | 2.391  | 1.620  | 4.834  | 18.946 | 24.738 | 32.305 | 41.215 | 31.279 | 32.038 | 44.000 | 31.807 | 25.088 | 18.357 | 18.411 | 19.866 | 13.471 | 8.047  | 2.407  | 2.946  |
| 03-Jul-09 | 5.172  | 7.959  | 7.482  | 6.608  | 7.141  | 10.139 | 5.339  | 16.625 | 26.303 | 28.734 | 28.064 | 29.732 | 23.647 | 24.229 | 31.401 | 26.251 | 19.282 | 12.396 | 15.696 | 22.687 | 14.851 | 16.797 | 13.044 | 13.384 |
| 04-Jul-09 | 10.833 | 9.018  | 8.384  | 7.666  | 7.378  | 7.849  | 2.737  | 6.502  | 9.952  | 12.606 | 14.581 | 15.669 | 8.850  | 7.759  | 7.454  | 5.018  | 3.657  | 4.377  | 6.538  | 15.134 | 13.136 | 9.932  | 8.224  | 11.706 |
| 05-Jul-09 | 13.506 | 14.289 | 15.051 | 15.319 | 16.145 | 7.024  | 1.155  | 0.785  | 1.433  | 2.038  | 2.789  | 3.060  | 3.306  | 3.298  | 3.142  | 3.073  | 2.596  | 2.185  | 5.332  | 9.654  | 7.987  | 4.522  | 4.133  | 12.542 |
| 06-Jul-09 | 17.609 | 14.654 | 14.336 | 12.521 | 16.002 | 18.323 | 16.304 | 24.934 | 37.959 | 45.612 | 50.097 | 43.744 | 38.781 | 44.228 | 49.192 | 46.371 | 35.113 | 18.492 | 20.936 | 29.853 | 22.374 | 15.738 | 17.489 | 30.631 |
| 07-Jul-09 | 27.217 | 25.490 | 21.758 | 21.468 | 24.900 | 23.346 | 19.618 | 27.440 | 40.474 | 53.640 | 49.300 | 44.498 | 42.228 | 44.195 | 48.234 | 44.810 | 41.679 | 16.133 | 20.847 | 38.247 | 37.130 | 23.883 | 20.377 | 31.307 |
| 08-Jul-09 | 29.832 | 28.727 | 27.106 | 25.873 | 28.029 | 22.780 | 4.501  | 8.389  | 30.983 | 37.458 | 40.784 | 47.267 | 39.909 | 39.236 | 42.308 | 44.312 | 34.268 | 16.397 | 23.277 | 37.318 | 35.100 | 16.657 | 17.449 | 34.084 |
| 09-Jul-09 | 28.902 | 24.590 | 21.973 | 21.439 | 28.666 | 31.739 | 21.592 | 30.197 | 39.872 | 43.865 | 43.810 | 46.655 | 43.966 | 44.056 | 47.134 | 45.393 | 41.044 | 16.873 | 23.086 | 34.086 | 32.884 | 18.276 | 18.581 | 31.469 |
| 10-Jul-09 | 5.792  | 0.000  | 0.000  | 0.000  | 0.541  | 3.196  | 3.011  | 6.947  | 34.751 | 40.525 | 42.792 | 44.559 | 40.409 | 44.404 | 42.262 | 41.208 | 39.982 | 16.459 | 23.119 | 37.264 | 33.694 | 14.150 | 2.622  | 3.586  |
| 11-Jul-09 | 1.961  | 1.061  | 0.531  | 0.000  | 0.000  | 0.000  | 0.223  | 1.798  | 6.103  | 11.164 | 14.128 | 14.993 | 11.349 | 8.800  | 8.085  | 5.917  | 4.798  | 3.567  | 9.156  | 16.197 | 11.490 | 7.598  | 1.942  | 10.832 |
| 12-Jul-09 | 21.439 | 19.929 | 18.284 | 17.898 | 16.468 | 14.897 | 4.056  | 8.513  | 14.047 | 12.994 | 10.114 | 11.132 | 11.675 | 10.677 | 6.936  | 2.879  | 2.461  | 2.260  | 4.984  | 9.886  | 11.351 | 17.274 | 14.930 | 18.233 |
| 13-Jul-09 | 16.146 | 13.732 | 13.759 | 12.980 | 13.732 | 17.166 | 13.376 | 7.499  | 26.593 | 32.121 | 40.697 | 32.957 | 37.774 | 39.093 | 38.728 | 39.820 | 38.630 | 17.423 | 24.466 | 32.210 | 30.001 | 25.861 | 29.795 | 35.810 |
| 14-Jul-09 | 36.673 | 37.087 | 36.249 | 36.641 | 36.165 | 33.558 | 28.428 | 31.482 | 38.644 | 22.270 | 25.641 | 29.205 | 31.969 | 32.213 | 29.991 | 29.133 | 46.201 | 15.095 | 20.536 | 19.282 | 20.184 | 37.931 | 51.830 | 47.530 |
| 15-Jul-09 | 39.678 | 36.405 | 34.751 | 32.686 | 34.621 | 36.280 | 30.372 | 45.800 | 50.873 | 47.177 | 59.916 | 63.798 | 50.546 | 42.752 | 43.381 | 43.350 | 44.113 | 17.495 | 36.160 | 52.294 | 54.264 | 42.477 | 46.500 | 42.066 |
| 16-Jul-09 | 34.066 | 32.903 | 28.811 | 28.536 | 33.432 | 37.034 | 35.881 | 43.768 | 57.157 | 57.032 | 63.627 | 64.755 | 57.005 | 48.940 | 48.828 | 49.380 | 45.392 | 19.917 | 28.100 | 48.497 | 51.388 | 40.312 | 52.161 | 40.275 |
| 17-Jul-09 | 36.967 | 36.911 | 33.842 | 33.303 | 35.265 | 41.930 | 32.520 | 36.918 | 55.020 | 54.814 | 59.266 | 62.759 | 51.875 | 50.937 | 52.569 | 49.616 | 42.151 | 17.590 | 18.350 | 44.300 | 53.893 | 36.671 | 35.264 | 42.334 |
| 18-Jul-09 | 43.325 | 41.073 | 40.251 | 34.240 | 39.335 | 36.000 | 23.611 | 24.792 | 35.858 | 43.081 | 39.316 | 34.416 | 27.760 | 23.650 | 21.154 | 20.648 | 15.797 | 10.263 | 10.404 | 20.658 | 29.224 | 26.571 | 39.370 | 45.127 |
| 19-Jul-09 | 40.229 | 35.117 | 33.753 | 33.066 | 32.311 | 31.008 | 17.825 | 18.965 | 12.176 | 13.618 | 17.082 | 17.715 | 15.888 | 16.037 | 12.396 | 13.148 | 17.138 | 20.759 | 12.985 | 18.828 | 26.184 | 46.908 | 42.105 | 38.237 |
| 20-Jul-09 | 24.490 | 20.284 | 19.843 | 19.374 | 19.071 | 23.053 | 18.815 | 28.756 | 59.297 | 62.799 | 60.122 | 58.232 | 57.347 | 56.826 | 56.795 | 56.881 | 57.152 | 22.305 | 17.636 | 47.034 | 45.904 | 30.888 | 28.348 | 31.497 |
| 21-Jul-09 | 24.345 | 22.408 | 22.952 | 21.899 | 22.971 | 28.295 | 21.399 | 32.507 | 50.056 | 52.926 | 51.884 | 49.921 | 48.835 | 49.189 | 53.740 | 55.060 | 52.047 | 22.629 | 17.649 | 47.197 | 45.931 | 26.883 | 27.021 | 32.249 |
| 22-Jul-09 | 25.425 | 22.407 | 21.546 | 19.191 | 26.861 | 29.497 | 11.954 | 19.127 | 41.941 | 44.697 | 49.770 | 53.665 | 51.433 | 51.466 | 63.927 | 55.821 | 49.491 | 22.644 | 26.165 | 35.729 | 33.773 | 22.840 | 14.094 | 23.383 |
| 23-Jul-09 | 19.893 | 18.279 | 18.512 | 18.221 | 19.442 | 25.003 | 12.465 | 18.947 | 39.846 | 45.002 | 57.627 | 59.132 | 44.047 | 40.231 | 42.016 | 41.286 | 37.423 | 17.236 | 16.957 | 28.365 | 27.722 | 24.486 | 21.126 | 28.666 |
| 24-Jul-09 | 12.792 | 2.652  | 1.098  | 0.983  | 0.543  | 3.916  | 2.830  | 5.697  | 27.564 | 33.221 | 35.630 | 36.981 | 36.310 | 37.266 | 39.815 | 37.895 | 33.518 | 13.675 | 11.649 | 30.262 | 29.695 | 17.410 | 9.462  | 22.116 |
| 25-Jul-09 | 25.094 | 23.605 | 22.895 | 22.227 | 23.017 | 23.689 | 10.828 | 11.709 | 24.236 | 27.691 | 45.705 | 46.869 | 31.152 | 27.395 | 23.605 | 22.065 | 13.782 | 7.670  | 9.985  | 21.155 | 15.526 | 11.115 | 13.080 | 22.520 |
| 26-Jul-09 | 20.528 | 18.099 | 17.039 | 16.277 | 16.270 | 18.115 | 8.443  | 10.762 | 15.804 | 19.224 | 23.868 | 25.292 | 25.166 | 24.467 | 23.026 | 23.935 | 19.101 | 12.143 | 16.107 | 20.990 | 18.349 | 13.593 | 13.510 | 24.745 |
| 27-Jul-09 | 21.711 | 19.497 | 17.948 | 17.863 | 19.738 | 22.616 | 15.071 | 22.305 | 36.898 | 31.107 | 32.630 | 34.436 | 31.150 | 34.229 | 35.381 | 34.701 | 29.730 | 14.745 | 20.980 | 39.606 | 41.266 | 33.225 | 27.412 | 31.014 |
| 28-Jul-09 | 27.764 | 27.131 | 26.649 | 26.386 | 25.165 | 25.071 | 18.877 | 32.571 | 39.617 | 38.164 | 40.301 | 36.800 | 33.906 | 35.015 | 36.292 | 35.192 | 33.662 | 17.116 | 14.183 | 44.112 | 48.934 | 37.541 | 26.915 | 34.078 |
| 29-Jul-09 | 43.770 | 41.000 | 38.966 | 41.719 | 42.774 | 42.026 | 27.885 | 48.865 | 43.861 | 48.762 | 47.432 | 47.315 | 49.867 | 49.793 | 49.850 | 49.475 | 51.791 | 18.915 | 13.678 | 29.428 | 21.961 | 20.355 | 30.865 | 39.107 |
| 30-Jul-09 | 36.638 | 35.495 | 38.219 | 39.123 | 37.927 | 40.168 | 32.492 | 53.226 | 46.498 | 48.813 | 55.632 | 58.716 | 55.454 | 56.559 | 55.601 | 55.239 | 53.447 | 17.752 | 12.388 | 25.074 | 23.968 | 22.115 | 36.282 | 45.840 |
| 31-Jul-09 | 42.164 | 40.352 | 39.865 | 38.775 | 42.065 | 42.949 | 32.591 | 50.177 | 45.337 | 41.298 | 39.853 | 39.770 | 38.600 | 38.430 | 39.241 | 33.269 | 37.494 | 16.424 | 15.993 | 34.379 | 32.133 | 22.301 | 41.286 | 44.668 |

|  |    |        |
|--|----|--------|
| Precio mínimo de la serie              | \$ | -      |
| Precio máximo de la serie              | \$ | 64.755 |
| Precio promedio aritmético de la serie | \$ | 27.677 |

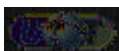
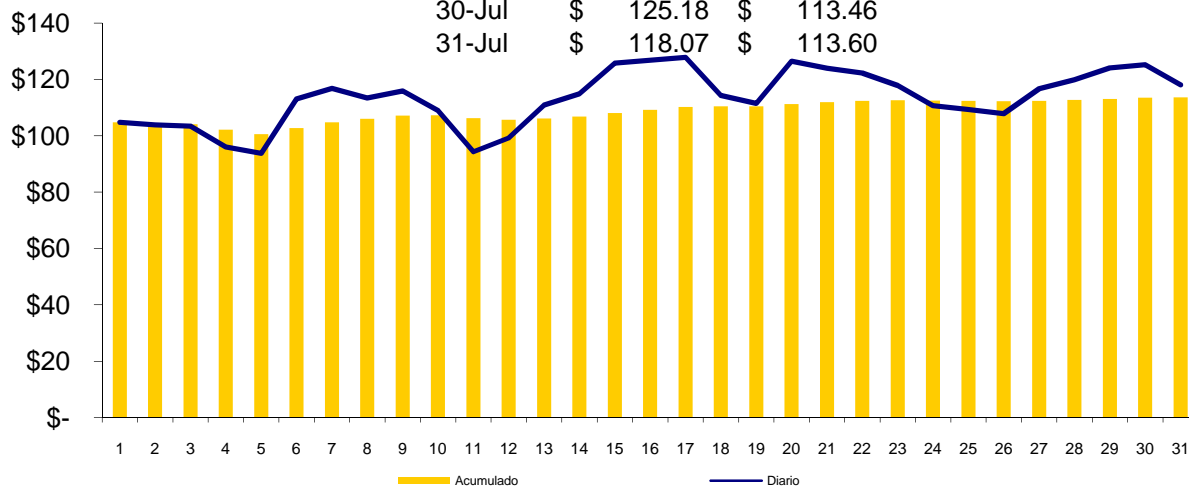
## Precios MRS = SIS+EST (\$/MWh)

| FECHA     | 0       | 1       | 2       | 3       | 4       | 5       | 6       | 7       | 8       | 9       | 10      | 11      | 12      | 13      | 14      | 15      | 16      | 17      | 18      | 19      | 20      | 21      | 22      | 23      |
|-----------|---------|---------|---------|---------|---------|---------|---------|---------|---------|---------|---------|---------|---------|---------|---------|---------|---------|---------|---------|---------|---------|---------|---------|---------|
| 01-Jul-09 | 70.673  | 69.474  | 69.446  | 69.447  | 69.473  | 80.911  | 92.300  | 95.723  | 110.798 | 118.974 | 128.668 | 126.569 | 121.140 | 129.143 | 130.943 | 129.061 | 119.273 | 107.629 | 117.062 | 132.245 | 124.937 | 113.503 | 100.906 | 72.328  |
| 02-Jul-09 | 73.657  | 72.747  | 72.603  | 71.877  | 72.026  | 81.297  | 91.915  | 96.003  | 110.516 | 116.333 | 124.032 | 132.604 | 122.769 | 123.950 | 135.477 | 123.256 | 117.020 | 109.838 | 118.041 | 129.866 | 123.475 | 107.844 | 98.045  | 72.221  |
| 03-Jul-09 | 74.615  | 77.390  | 75.884  | 75.006  | 76.572  | 80.073  | 97.645  | 109.028 | 118.691 | 121.127 | 120.454 | 122.133 | 116.041 | 116.616 | 123.796 | 118.638 | 111.671 | 104.790 | 115.155 | 132.692 | 124.861 | 116.580 | 110.643 | 82.647  |
| 04-Jul-09 | 80.294  | 78.473  | 77.805  | 77.086  | 76.832  | 77.800  | 95.074  | 98.907  | 102.359 | 105.013 | 106.979 | 108.077 | 101.251 | 100.162 | 99.854  | 97.416  | 96.056  | 96.777  | 106.017 | 125.168 | 123.167 | 109.740 | 106.848 | 80.990  |
| 05-Jul-09 | 83.145  | 83.401  | 84.414  | 84.610  | 84.819  | 76.733  | 92.995  | 92.614  | 92.259  | 93.044  | 94.354  | 94.439  | 94.890  | 94.840  | 94.899  | 94.551  | 94.565  | 93.943  | 103.918 | 120.217 | 118.522 | 103.010 | 101.126 | 81.190  |
| 06-Jul-09 | 87.548  | 83.776  | 83.959  | 82.002  | 84.246  | 88.642  | 107.794 | 116.403 | 127.425 | 135.438 | 141.032 | 134.313 | 129.755 | 135.120 | 140.519 | 137.139 | 126.862 | 109.820 | 118.912 | 140.526 | 132.979 | 115.636 | 114.472 | 98.829  |
| 07-Jul-09 | 96.756  | 94.632  | 91.201  | 91.329  | 92.284  | 93.085  | 112.408 | 120.189 | 133.120 | 146.106 | 141.975 | 137.447 | 134.982 | 136.787 | 141.101 | 137.158 | 134.188 | 108.801 | 120.353 | 148.860 | 147.555 | 123.601 | 117.340 | 98.605  |
| 08-Jul-09 | 99.371  | 97.869  | 96.549  | 95.734  | 95.413  | 92.519  | 97.151  | 101.028 | 122.619 | 129.274 | 133.159 | 139.456 | 132.303 | 131.588 | 134.875 | 136.600 | 127.047 | 108.965 | 122.783 | 147.931 | 145.525 | 116.375 | 114.412 | 101.382 |
| 09-Jul-09 | 98.525  | 93.811  | 91.495  | 91.377  | 98.127  | 101.563 | 114.318 | 122.920 | 132.590 | 136.768 | 136.260 | 138.926 | 136.440 | 136.483 | 139.789 | 137.760 | 133.903 | 109.527 | 122.675 | 144.771 | 143.394 | 118.079 | 115.620 | 100.852 |
| 10-Jul-09 | 75.785  | 69.991  | 69.992  | 69.988  | 70.462  | 73.190  | 95.817  | 99.750  | 127.469 | 133.448 | 135.322 | 136.910 | 132.963 | 136.911 | 134.977 | 133.635 | 132.921 | 109.173 | 123.098 | 148.209 | 144.674 | 114.113 | 101.511 | 73.509  |
| 11-Jul-09 | 71.403  | 70.487  | 68.933  | 68.386  | 69.417  | 69.932  | 92.527  | 94.200  | 98.489  | 103.555 | 106.520 | 107.395 | 103.735 | 101.187 | 100.471 | 98.312  | 97.184  | 95.962  | 108.614 | 126.194 | 121.485 | 107.380 | 99.540  | 80.089  |
| 12-Jul-09 | 90.971  | 89.445  | 86.776  | 86.384  | 85.985  | 84.919  | 96.350  | 100.805 | 106.333 | 105.285 | 102.406 | 103.424 | 103.961 | 102.964 | 99.222  | 95.174  | 94.747  | 94.555  | 104.532 | 119.973 | 121.436 | 117.146 | 112.618 | 87.580  |
| 13-Jul-09 | 85.668  | 83.238  | 82.241  | 81.456  | 83.239  | 87.178  | 105.660 | 99.781  | 118.869 | 124.402 | 132.979 | 125.239 | 130.050 | 131.370 | 131.004 | 132.105 | 130.906 | 109.708 | 124.004 | 142.287 | 140.076 | 114.582 | 116.276 | 99.897  |
| 14-Jul-09 | 105.205 | 105.613 | 104.781 | 105.167 | 104.692 | 112.530 | 120.732 | 123.784 | 130.940 | 114.571 | 117.943 | 121.507 | 124.265 | 124.510 | 122.287 | 121.438 | 138.497 | 107.400 | 112.834 | 129.279 | 130.179 | 134.793 | 118.458 | 115.867 |
| 15-Jul-09 | 108.330 | 105.051 | 103.373 | 101.302 | 103.268 | 115.062 | 122.766 | 138.202 | 143.269 | 139.578 | 152.318 | 156.200 | 142.942 | 135.149 | 135.777 | 135.755 | 136.509 | 109.900 | 128.778 | 162.381 | 164.349 | 139.519 | 114.178 | 110.523 |
| 16-Jul-09 | 102.688 | 101.519 | 97.433  | 97.152  | 102.049 | 116.096 | 124.465 | 132.350 | 147.963 | 149.423 | 156.019 | 157.147 | 146.841 | 141.327 | 141.214 | 141.775 | 133.268 | 107.502 | 120.488 | 158.584 | 161.473 | 135.864 | 118.879 | 108.702 |
| 17-Jul-09 | 106.405 | 106.344 | 102.245 | 101.700 | 104.691 | 111.862 | 124.907 | 129.315 | 147.425 | 147.210 | 151.665 | 155.154 | 144.280 | 143.340 | 144.972 | 142.019 | 134.548 | 109.989 | 110.972 | 154.295 | 163.890 | 136.455 | 132.859 | 111.596 |
| 18-Jul-09 | 112.413 | 110.296 | 109.524 | 103.997 | 107.231 | 105.222 | 115.838 | 116.989 | 128.963 | 135.817 | 131.705 | 127.261 | 120.215 | 115.983 | 113.547 | 112.801 | 107.614 | 102.452 | 109.616 | 130.883 | 139.331 | 124.975 | 136.425 | 112.969 |
| 19-Jul-09 | 110.705 | 105.598 | 104.238 | 103.547 | 102.777 | 101.486 | 112.405 | 113.045 | 106.515 | 108.119 | 111.580 | 112.219 | 110.482 | 110.725 | 107.069 | 107.815 | 103.310 | 106.654 | 113.029 | 129.468 | 136.327 | 140.886 | 136.690 | 108.621 |
| 20-Jul-09 | 95.506  | 91.415  | 90.938  | 90.535  | 89.977  | 93.751  | 113.465 | 122.546 | 152.326 | 155.510 | 152.290 | 151.036 | 149.831 | 149.214 | 149.048 | 148.888 | 148.184 | 114.800 | 117.340 | 156.304 | 155.387 | 131.676 | 123.213 | 101.271 |
| 21-Jul-09 | 94.290  | 92.356  | 92.904  | 91.852  | 92.919  | 98.244  | 114.334 | 125.440 | 142.986 | 145.855 | 144.812 | 142.851 | 141.768 | 142.119 | 146.667 | 147.987 | 145.001 | 115.579 | 118.704 | 158.260 | 156.995 | 127.939 | 121.068 | 102.086 |
| 22-Jul-09 | 95.376  | 92.360  | 91.498  | 89.139  | 96.810  | 99.450  | 106.005 | 113.173 | 135.990 | 138.743 | 143.824 | 147.719 | 145.480 | 145.512 | 157.976 | 149.869 | 142.436 | 115.591 | 127.222 | 145.986 | 144.031 | 123.904 | 108.145 | 93.223  |
| 23-Jul-09 | 89.331  | 87.705  | 87.911  | 87.619  | 88.677  | 94.473  | 105.857 | 112.343 | 133.244 | 138.402 | 151.025 | 152.530 | 137.444 | 133.630 | 135.421 | 134.691 | 130.822 | 110.637 | 118.506 | 138.365 | 137.726 | 125.268 | 119.727 | 97.930  |
| 24-Jul-09 | 82.740  | 72.598  | 71.047  | 70.931  | 70.498  | 73.866  | 97.682  | 100.543 | 122.412 | 128.071 | 130.478 | 131.829 | 131.157 | 132.115 | 134.670 | 132.750 | 128.367 | 108.526 | 113.198 | 140.262 | 139.699 | 118.192 | 108.263 | 92.070  |
| 25-Jul-09 | 95.002  | 93.518  | 92.808  | 92.134  | 92.923  | 93.761  | 105.435 | 106.316 | 118.851 | 122.297 | 140.314 | 141.474 | 125.767 | 122.008 | 118.218 | 116.678 | 108.389 | 102.279 | 111.287 | 131.380 | 125.633 | 112.229 | 113.155 | 92.602  |
| 26-Jul-09 | 90.514  | 88.092  | 87.033  | 86.266  | 86.261  | 88.109  | 102.991 | 105.313 | 110.350 | 113.777 | 118.416 | 119.843 | 119.714 | 119.014 | 117.571 | 118.487 | 113.651 | 106.694 | 117.307 | 130.992 | 128.348 | 114.026 | 111.762 | 94.736  |
| 27-Jul-09 | 91.700  | 89.489  | 87.943  | 87.853  | 89.728  | 92.602  | 109.617 | 116.858 | 131.453 | 125.656 | 127.183 | 128.984 | 125.705 | 128.782 | 129.928 | 129.252 | 124.276 | 109.299 | 122.175 | 149.604 | 151.271 | 133.656 | 125.659 | 101.001 |
| 28-Jul-09 | 97.752  | 97.124  | 96.642  | 96.373  | 95.155  | 95.063  | 113.424 | 127.118 | 134.165 | 132.716 | 134.855 | 131.354 | 128.461 | 129.562 | 130.843 | 129.741 | 128.213 | 111.668 | 115.387 | 154.110 | 158.937 | 137.968 | 125.164 | 104.064 |
| 29-Jul-09 | 113.678 | 110.913 | 108.879 | 111.626 | 112.680 | 112.098 | 119.852 | 140.832 | 135.846 | 140.738 | 139.411 | 139.290 | 141.852 | 141.776 | 141.833 | 141.458 | 143.768 | 110.894 | 114.980 | 139.743 | 132.158 | 121.469 | 122.850 | 109.189 |
| 30-Jul-09 | 100.236 | 99.098  | 101.762 | 102.620 | 101.517 | 103.850 | 120.399 | 135.783 | 140.676 | 142.955 | 149.776 | 152.840 | 149.469 | 150.506 | 149.542 | 149.168 | 147.388 | 111.814 | 113.682 | 135.292 | 134.341 | 123.032 | 120.811 | 109.256 |
| 31-Jul-09 | 104.714 | 102.919 | 102.385 | 101.255 | 104.682 | 105.662 | 119.805 | 120.184 | 140.078 | 136.087 | 135.169 | 135.600 | 134.416 | 134.405 | 135.182 | 129.051 | 130.461 | 109.945 | 116.848 | 143.238 | 140.996 | 122.069 | 124.553 | 106.825 |

|  |    |        |
|--|----|--------|
| Precio mínimo de la serie              | \$ | 68.39  |
| Precio máximo de la serie              | \$ | 164.35 |
| Precio promedio aritmético de la serie | \$ | 115.55 |
| Precio promedio ponderado              | \$ | 113.60 |

### Precios Promedios (\$/MWh)

| FECHA  | Diario    | Acumulado |
|--------|-----------|-----------|
| 01-Jul | \$ 104.81 | \$ 104.81 |
| 02-Jul | \$ 103.88 | \$ 104.34 |
| 03-Jul | \$ 103.44 | \$ 104.04 |
| 04-Jul | \$ 96.00  | \$ 102.11 |
| 05-Jul | \$ 93.70  | \$ 100.55 |
| 06-Jul | \$ 113.07 | \$ 102.69 |
| 07-Jul | \$ 116.81 | \$ 104.81 |
| 08-Jul | \$ 113.40 | \$ 105.95 |
| 09-Jul | \$ 115.85 | \$ 107.10 |
| 10-Jul | \$ 108.98 | \$ 107.30 |
| 11-Jul | \$ 94.35  | \$ 106.20 |
| 12-Jul | \$ 99.20  | \$ 105.72 |
| 13-Jul | \$ 110.89 | \$ 106.13 |
| 14-Jul | \$ 114.90 | \$ 106.75 |
| 15-Jul | \$ 125.78 | \$ 108.01 |
| 16-Jul | \$ 126.73 | \$ 109.15 |
| 17-Jul | \$ 127.77 | \$ 110.23 |
| 18-Jul | \$ 114.27 | \$ 110.42 |
| 19-Jul | \$ 111.47 | \$ 110.47 |
| 20-Jul | \$ 126.48 | \$ 111.27 |
| 21-Jul | \$ 123.96 | \$ 111.88 |
| 22-Jul | \$ 122.28 | \$ 112.35 |
| 23-Jul | \$ 117.84 | \$ 112.59 |
| 24-Jul | \$ 110.62 | \$ 112.51 |
| 25-Jul | \$ 109.35 | \$ 112.39 |
| 26-Jul | \$ 107.82 | \$ 112.24 |
| 27-Jul | \$ 116.70 | \$ 112.40 |
| 28-Jul | \$ 119.81 | \$ 112.67 |
| 29-Jul | \$ 124.00 | \$ 113.07 |
| 30-Jul | \$ 125.18 | \$ 113.46 |
| 31-Jul | \$ 118.07 | \$ 113.60 |



## Sistema de Transmisión ENS, Pérdidas e interrupciones

| Rubros                        | Julio 2009 | % 1/    | Variaciones 2/ |        | Acumulado Anual 2/ |        |
|-------------------------------|------------|---------|----------------|--------|--------------------|--------|
|                               |            |         | Mensual        | Anual  | Acumulada          | Var. % |
| Energía no Servida (MWh)      | 783.22     | 0.17%   | 152.51         | 165.03 | 2,782.71           | -21.26 |
| Pérdidas de Transmisión (GWh) | 8.6        |         |                |        |                    |        |
| Interrupciones de Servicio    | 233        | eventos |                |        |                    |        |

<sup>1/</sup> Energía no Servida como porcentaje de demanda

<sup>2/</sup> Para el detalle de los períodos ver el apartado de Referencias de la Pág. 3.

| Interrupciones         |            |
|------------------------|------------|
| Voltaje                | Eventos    |
| Circuitos de 23 kV     | 5          |
| Circuitos de 34.5 kV   | 20         |
| Circuitos de 46 kV     | 187        |
| Línea de 115 kV        | 19         |
| Línea de Interconexión | 2          |
| <b>Total</b>           | <b>233</b> |

|   |            |
|---|------------|
| Falla en líneas de transmisión          | 7          |
| Mantenimiento en línea de transmisión   | 12         |
| Falla en circuitos de distribución      | 145        |
| Mantenimiento líneas de distribución    | 67         |
| Fallas líneas de interconexión          | 0          |
| Mantenimiento línea de interconexión 1/ | 1          |
| Actuación del EDLI                      | 1          |
| <b>Total</b>                            | <b>233</b> |

<sup>1/</sup> Mantenimiento o por solicitud de líneas de interconexión Guatemala y Honduras

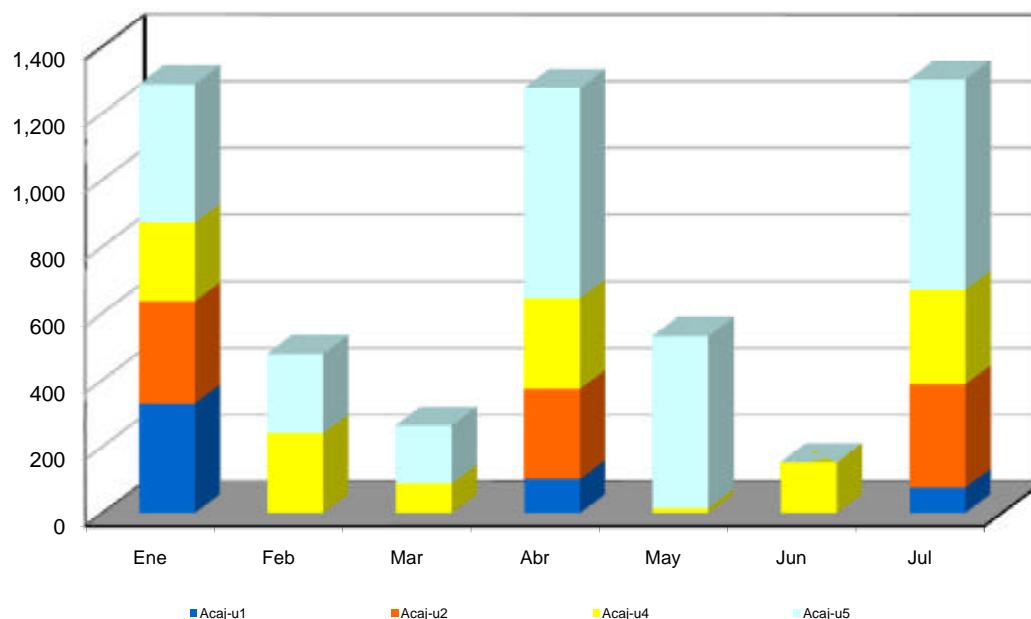




Reserva Fría por Confiabilidad

| Mes    | Pi (\$/MWh) | Var.% Mensual | Inyecciones por planta (MWh) |          |         |         |          | Inyección Total (MWh) | % RFC |
|--------|-------------|---------------|------------------------------|----------|---------|---------|----------|-----------------------|-------|
|        |             |               | Acaj-u1                      | Acaj-u2  | Acaj-u4 | Acaj-u5 | Total    |                       |       |
| Ene-08 | 4.71        | ---           | 6,798.4                      | 3,495.2  | 428.4   | 2,713.6 | 13,435.6 | 458,244.4             | 2.93  |
| Feb-08 | 4.47        | -0.1          | 6,645.4                      | 1,775.6  | 439.1   | 1,839.0 | 10,699.2 | 447,347.1             | 2.39  |
| Mar-08 | 3.62        | -0.2          | 3,476.0                      | 2,515.0  | 441.7   | 2,143.3 | 8,576.0  | 464,813.1             | 1.85  |
| Abr-08 | 3.18        | -0.1          | 10,038.4                     | 9,741.0  | 3,211.3 | 465.0   | 23,455.7 | 484,558.2             | 4.84  |
| May-08 | 6.08        | 0.9           | 12,253.8                     | 11,753.2 | 3,593.6 | 0.0     | 27,600.5 | 494,234.7             | 5.58  |
| Jun-08 | 8.68        | 0.4           | 7,657.8                      | 8,149.7  | 1,182.1 | 0.0     | 16,989.7 | 494,234.7             | 3.44  |
| Jul-08 | 4.42        | -0.5          | 3,151.8                      | 3,273.6  | 463.1   | 0.0     | 6,888.5  | 490,747.0             | 1.40  |
| Ago-08 | 1.77        | -0.6          | 0.0                          | 0.0      | 0.0     | 0.0     | 0.0      | 491,542.1             | 0.00  |
| Sep-08 | 0.00        | -1.0          | 0.0                          | 0.0      | 0.0     | 0.0     | 0.0      | 480,342.5             | 0.00  |
| Oct-08 | 0.41        | ---           | 226.1                        | 276.4    | 31.8    | 0.0     | 534.3    | 491,940.4             | 0.11  |
| Nov-08 | 0.05        | -0.9          | 0.0                          | 0.0      | 17.7    | 0.0     | 17.7     | 444,973.5             | 0.00  |
| Dic-08 | 1.60        | 31.0          | 54.2                         | 0.0      | 313.3   | 142.7   | 510.3    | 460,442.6             | 0.11  |
| Ene-09 | 1.52        | -0.1          | 329.3                        | 305.9    | 234.5   | 415.9   | 1,285.6  | 472,520.5             | 0.27  |
| Feb-09 | 1.92        | 0.3           | 0.0                          | 0.0      | 239.6   | 238.0   | 477.5    | 435,086.5             | 0.11  |
| Mar-09 | 2.18        | 0.1           | 0.0                          | 0.0      | 89.2    | 173.0   | 262.3    | 485,378.2             | 0.05  |
| Abr-09 | 2.22        | 1.8           | 102.5                        | 270.1    | 272.1   | 629.0   | 1,273.6  | 461,950.9             | 0.28  |
| May-09 | 2.11        | -5.0          | 0.0                          | 0.0      | 15.9    | 514.5   | 530.4    | 473,374.0             | 0.11  |
| Jun-09 | 2.17        | 2.8           | 0.0                          | 0.0      | 152.4   | 0.0     | 152.4    | 474,451.9             | 0.03  |
| Jul-09 | 2.19        | 0.9           | 76.8                         | 309.2    | 283.8   | 630.5   | 1,300.3  | 491,801.7             | 0.26  |

MWh





## Condición de Reserva

Reserva Rodante y Reserva Fría en Demanda Máxima (MW)  
Jul-2009

| Día | Cap. Disponible | Gen. Despachada | Demanda + Perdidas | Intercambio Neto * | Reserva Rodante | Reserva Fria |
|-----|-----------------|-----------------|--------------------|--------------------|-----------------|--------------|
| 1   | 1094            | 808             | 804                | -4                 | 54              | 233          |
| 2   | 1096            | 802             | 838                | 36                 | 46              | 248          |
| 3   | 1126            | 803             | 800                | -3                 | 71              | 252          |
| 4   | 1104            | 780             | 769                | -11                | 46              | 278          |
| 5   | 1104            | 748             | 746                | -2                 | 42              | 315          |
| 6   | 1092            | 840             | 856                | 16                 | 57              | 194          |
| 7   | 1072            | 820             | 835                | 15                 | 58              | 194          |
| 8   | 1062            | 802             | 848                | 47                 | 69              | 191          |
| 9   | 1091            | 790             | 847                | 57                 | 43              | 258          |
| 10  | 1084            | 768             | 841                | 74                 | 38              | 279          |
| 11  | 1084            | 758             | 753                | -5                 | 45              | 281          |
| 12  | 1101            | 710             | 712                | 2                  | 45              | 346          |
| 13  | 1090            | 766             | 854                | 87                 | 63              | 260          |
| 14  | 1119            | 806             | 874                | 68                 | 67              | 246          |
| 15  | 1127            | 856             | 874                | 18                 | 33              | 237          |
| 16  | 1080            | 836             | 858                | 22                 | 50              | 194          |
| 17  | 1114            | 849             | 868                | 19                 | 45              | 220          |
| 18  | 1074            | 778             | 781                | 3                  | 37              | 260          |
| 19  | 1028            | 752             | 778                | 25                 | 21              | 255          |
| 20  | 1031            | 826             | 895                | 69                 | 76              | 129          |
| 21  | 1024            | 810             | 872                | 62                 | 64              | 149          |
| 22  | 999             | 806             | 875                | 69                 | 44              | 149          |
| 23  | 1126            | 803             | 872                | 69                 | 61              | 262          |
| 24  | 1149            | 820             | 871                | 51                 | 62              | 267          |
| 25  | 1127            | 780             | 776                | -4                 | 68              | 279          |
| 26  | 1014            | 698             | 733                | 35                 | 46              | 270          |
| 27  | 1112            | 838             | 880                | 42                 | 48              | 226          |
| 28  | 1068            | 848             | 881                | 33                 | 57              | 163          |
| 29  | 976             | 872             | 887                | 15                 | 37              | 68           |
| 30  | 953             | 824             | 858                | 34                 | 50              | 79           |
| 31  | 1094            | 797             | 837                | 40                 | 64              | 232          |

\* Valor positivo significa Importación



## Interrupciones del servicio

| Entrega           | Fecha Inicio | Hora Inicio | Fecha Final | Hora Final | Duración | Rele     | Motivo   | MW    | KWh    | Responsable |
|-------------------|--------------|-------------|-------------|------------|----------|----------|--|-------|--------|-------------|
| EEO-SMIG(4-84)    | 01/07        | 00:26       | 01/07       | 00:27      | 1m       | 51       | FALLA EN LÍNEA / INDICO TAMBIEN 59N. EEO REPORTA LLUVIA EN LA ZONA.  | 6.40  | 106.67 | EEO         |
| CLESA-ATEO(4-82)  | 01/07        | 07:20       | 01/07       | 07:21      | 1m       | 51       | FALLA EN LÍNEA /   | 11.96 | 199.33 | CLESA       |
| LAGEO-PEDR(4-81)  | 01/07        | 07:29       | 01/07       | 07:30      | 1m       | 51NS     | FALLA EN LÍNEA / INDICO TAMBIEN 59N.   | 6.88  | 114.67 | DELSUR      |
| EEO-SMIG(4-84)    | 02/07        | 00:17       | 02/07       | 00:18      | 1m       | 51       | FALLA EN LÍNEA / INDICO 59N.REPORTAN LLUVIA.   | 6.23  | 103.83 | EEO         |
| EEO-SMIG(4-84)    | 02/07        | 00:32       | 02/07       | 00:33      | 1m       | 51       | FALLA EN LÍNEA / INDICO 59N.REPORTAN LLUVIA.   | 6.16  | 102.67 | EEO         |
| EEO-SMIG(4-83)    | 02/07        | 00:32       | 02/07       | 00:33      | 1m       | 51NS     | FALLA EN LÍNEA / INDICO 59N.REPORTAN LLUVIA.   | 4.96  | 82.67  | EEO         |
| EEO-SMIG(4-85)    | 02/07        | 00:40       | 02/07       | 00:41      | 1m       | 51       | FALLA EN LÍNEA / INDICO 59N.REPORTAN LLUVIA.   | 2.32  | 38.67  | EEO         |
| DELSUR-SRAF(4-81) | 02/07        | 04:11       | 02/07       | 04:12      | 1m       | 51       | FALLA EN LÍNEA / LLUVIA FUERTE EN LA ZONA.   | 4.34  | 72.33  | DELSUR      |
| EEO-SMIG(4-84)    | 02/07        | 10:43       | 02/07       | 10:44      | 1m       | MANUAL   | MANTENIMIENTO PROGRAMADO / AISLAR SUB CEMFA POR TRABAJOS PROGRAMADOS. CARGA TRANSFERIDA A NIVEL DE DISTRIBUCION.               | 5.35  | 89.17  | EEO         |
| EEO-SMIG(4-84)    | 02/07        | 16:30       | 02/07       | 16:31      | 1m       | MANUAL   | MANTENIMIENTO PROGRAMADO / RECUPERAR SUB-CEMFA.  | 2.28  | 38.00  | EEO         |
| CAESS-SRAF(4-82)  | 02/07        | 17:40       | 02/07       | 17:41      | 1m       | 51       | FALLA EN LÍNEA / LLUVIA.   | 7.20  | 120.00 | CAESS       |
| ANDA-SANA(4-85)   | 02/07        | 17:55       | 02/07       | 17:56      | 1m       | 51       | FALLA EN LÍNEA / INDICO 59N.   | 8.66  | 144.33 | ANDA        |
| EEO-15SE(4-84)    | 02/07        | 22:45       | 02/07       | 22:46      | 1m       | MANUAL   | SOLICITUD DE DISTRIBUIDOR / MANIOBRAS PROPIAS EN SUS CIRCUITOS.  | 4.76  | 79.33  | EEO         |
| EEO-SMIG(4-84)    | 04/07        | 17:00       | 04/07       | 17:01      | 1m       | 51N      | FALLA EN LÍNEA / INDICO 59N.   | 7.59  | 126.50 | EEO         |
| DELSUR-SOYA(4-85) | 05/07        | 08:23       | 05/07       | 08:25      | 2m       | 51, 51NS | FALLA EN LÍNEA / INDICO TAMBIEN 59N.   | 3.82  | 127.33 | DELSUR      |
| CLESA-AHUA(4-81)  | 05/07        | 21:07       | 05/07       | 21:08      | 1m       | 51       | FALLA EN LÍNEA /   | 12.37 | 206.17 | CLESA       |
| CLESA-SONS(4-82)  | 05/07        | 21:20       | 05/07       | 21:21      | 1m       | 51       | FALLA EN LÍNEA / INDICO 59N.   | 5.91  | 98.50  | CLESA       |
| CLESA-AHUA(4-81)  | 06/07        | 06:48       | 06/07       | 06:49      | 1m       | 50, 51   | FALLA EN LÍNEA / INDICO 59N.   | 7.68  | 128.00 | CLESA       |
| CLESA-ATEO(3-84)  | 06/07        | 18:21       | 06/07       | 18:22      | 1m       | 51       | FALLA EN LÍNEA / CLESA REPORTA LLUVIA EN LA ZONA.  | 3.42  | 57.00  | CLESA       |
| DELSUR-SRAF(4-81) | 06/07        | 18:27       | 06/07       | 18:28      | 1m       | 51       | FALLA EN LÍNEA / DELSUR REPORTA TORMENTA EN LA ZONA.   | 5.64  | 94.00  | DELSUR      |
| EEO-SMIG(4-82)    | 06/07        | 18:54       | 06/07       | 18:55      | 1m       | 51       | FALLA EN LÍNEA / INDICO TAMBIEN 59N. EEO REPORTA TORMENTA EN LA ZONA.  | 13.50 | 225.00 | EEO         |
| EEO-15SE(4-84)    | 06/07        | 19:49       | 06/07       | 19:50      | 1m       | 51, 51NS | FALLA EN LÍNEA / INDICO TAMBIEN 59N. EEO REPORTA FUERTE TORMENTA CON DESCARGAS ELECTRICAS EN LA ZONA.                          | 8.25  | 137.50 | EEO         |
| CLESA-ACAJ(4-81)  | 06/07        | 20:35       | 06/07       | 20:38      | 3m       | 51       | FALLA EN LÍNEA / INDICO TAMBIEN 59N. PRUEBA A LAS 20:36 DISPARANDOSE SEGUNDOS DESPUES. CLESA DECIDE CONSULTAR ANTES DE CIERRE. | 6.36  | 318.00 | CLESA       |

## Interrupciones del servicio

| Entrega           | Fecha Inicio | Hora Inicio | Fecha Final | Hora Final | Duración | Rele     | Motivo   | MW    | KWh       | Responsable |
|-------------------|--------------|-------------|-------------|------------|----------|----------|--|-------|-----------|-------------|
| DELSUR-SOYA(4-85) | 07/07        | 08:15       | 07/07       | 08:16      | 1m       | 51, 51NS | FALLA EN LÍNEA / INDICO 59N.   | 5.16  | 86.00     | DELSUR      |
| CLESA-ATEO(4-83)  | 07/07        | 08:46       | 07/07       | 08:47      | 1m       | 51NS     | FALLA EN LÍNEA / INDICO 59N.   | 1.41  | 23.50     | CLESA       |
| DELSUR-ATEO(4-81) | 08/07        | 05:26       | 08/07       | 05:27      | 1m       | 51N      | FALLA EN LÍNEA / INDICO 59N.   | 7.46  | 124.33    | DELSUR      |
| DELSUR-ATEO(4-81) | 08/07        | 11:17       | 08/07       | 11:19      | 2m       | 51NS     | FALLA EN LÍNEA / INDICO 59N. LLUVIA FUERTE EN LA ZONA.   | 10.83 | 361.00    | DELSUR      |
| CLESA-ATEO(3-84)  | 08/07        | 12:08       | 08/07       | 12:09      | 1m       | 51       | FALLA EN LÍNEA / LLUVIA FUERTE EN LA ZONA.   | 2.70  | 45.00     | CLESA       |
| CLESA-ATEO(3-84)  | 08/07        | 12:10       | 08/07       | 16:53      | 4h 43m   | 51       | FALLA EN LÍNEA / LLUVIA FUERTE EN LA ZONA. CLESA REPARO LINEA ROTA, ENS CALCULADA.   | 2.32  | 13,150.00 | CLESA       |
| EEO-SMIG(4-84)    | 08/07        | 23:06       | 08/07       | 23:07      | 1m       | 51NS     | FALLA EN LÍNEA / INDICO 59N.   | 6.98  | 116.33    | EEO         |
| EEO-SMIG(4-85)    | 09/07        | 05:24       | 09/07       | 05:25      | 1m       | 51NS     | FALLA EN LÍNEA / INDICO 59N.   | 3.17  | 52.83     | EEO         |
| EEO-SMIG(4-83)    | 09/07        | 09:53       | 09/07       | 09:54      | 1m       | 51N      | FALLA EN LÍNEA / INDICO 59N.   | 6.10  | 101.67    | EEO         |
| CLESA-ATEO(3-84)  | 09/07        | 15:23       | 09/07       | 15:25      | 2m       | MANUAL   | SOLICITUD DE DISTRIBUIDOR / PARA AISLAR UN CLIENTE INDUSTRIAL POR FALLA EN SU SUBESTACION.   | 2.84  | 94.67     | CLESA       |
| EEO-SMIG(4-83)    | 09/07        | 15:42       | 09/07       | 15:43      | 1m       | 51       | FALLA EN LÍNEA / INDICO 59N.   | 6.82  | 113.67    | EEO         |
| EEO-SMIG(4-84)    | 09/07        | 16:15       | 09/07       | 16:16      | 1m       | 51NS     | FALLA EN LÍNEA / INDICO TAMBIEN 59N. EEO REPORTA AMENAZA DE LLUVIA EN LA ZONA.   | 7.12  | 118.67    | EEO         |
| DELSUR-SOYA(4-85) | 09/07        | 18:07       | 09/07       | 18:08      | 1m       | 51       | FALLA EN LÍNEA / DELSUR REPORTA FUERTE LLUVIA EN LA ZONA.  | 5.29  | 88.17     | DELSUR      |
| d07-NEJA(2-83)    | 09/07        | 18:20       | 09/07       | 18:23      | 3m       | 50/51    | FALLA EN LÍNEA / EDESAL REPORTA LLUVIA EN LA ZONA Y DECIDIO ESPERAR ANTES DE SOLICITAR CIERRE.   | 1.34  | 67.00     | d07         |
| CLESA-ATEO(3-84)  | 09/07        | 18:55       | 09/07       | 18:56      | 1m       | 51       | FALLA EN LÍNEA / CLESA REPOR TA FUERTE LLUVIA EN LA ZONA.  | 4.01  | 66.83     | CLESA       |
| CLESA-ATEO(4-83)  | 09/07        | 18:55       | 09/07       | 18:57      | 2m       | 51N      | FALLA EN LÍNEA / RELE REPORTADO POR ETESAL, YA QUE EN SCADA NO REGISTRO. INDICO TAMBIEN 59N. CLESA REPORTA FUERTE TORMENTA EN LA ZONA.         | 0.33  | 11.00     | CLESA       |
| CLESA-SANA(4-83)  | 10/07        | 01:17       | 13/07       | 15:47      | 86h 30m  | MANUAL   | SOLICITUD DE DISTRIBUIDOR / POR TRABAJO PROGRAMADO. TODA LA CARGA SE TRANSFIRIO AL INT.16-4-81. / Carga reconectada a las 01:19 del 10-07-2009 | 4.34  | 144.67    | CLESA       |
| CLESA-AHUA(4-81)  | 10/07        | 01:17       | 10/07       | 01:19      | 2m       | MANUAL   | SOLICITUD DE DISTRIBUIDOR / PARA RECIBIR LA CARGA DEL INT. 35-4-83.  | 5.45  | 181.67    | CLESA       |
| CLESA-ACAJ(4-81)  | 10/07        | 03:15       | 10/07       | 03:16      | 1m       | 51       | FALLA EN LÍNEA / INDICO TAMBIEN 59N. CLESA REPORTA LLUVIA EN LA ZONA.  | 3.72  | 62.00     | CLESA       |
| u03-ACAJ(4-82)    | 10/07        | 03:15       | 10/07       | 03:17      | 2m       | 51NS     | FALLA EN LÍNEA / INDICO TAMBIEN 59N.   | 0.17  | 5.67      | u03         |
| CLESA-ACAJ(4-81)  | 10/07        | 03:23       | 10/07       | 03:24      | 1m       | 51       | FALLA EN LÍNEA / INDICO TAMBIEN 59N. CLESA REPORTA LLUVIA EN LA ZONA.  | 3.38  | 56.33     | CLESA       |
| LAGEO-PEDR(4-81)  | 10/07        | 10:40       | 10/07       | 10:41      | 1m       | 51NS     | FALLA EN LÍNEA / INDICO 59N.   | 8.40  | 140.00    | DELSUR      |

## Interrupciones del servicio

| Entrega           | Fecha Inicio | Hora Inicio | Fecha Final | Hora Final | Duración | Rele      | Motivo  | MW    | KWh      | Responsable |
|-------------------|--------------|-------------|-------------|------------|----------|-----------|---|-------|----------|-------------|
| CLESA-ACAJ(4-81)  | 10/07        | 21:20       | 10/07       | 21:21      | 1m       | 51        | FALLA EN LÍNEA / INDICO 59N.  | 4.97  | 82.83    | CLESA       |
| u03-ACAJ(4-82)    | 10/07        | 21:20       | 10/07       | 21:21      | 1m       | 51NS      | FALLA EN LÍNEA / INDICO 59N.  | 1.07  | 17.83    | u03         |
| CLESA-ATEO(3-84)  | 11/07        | 15:32       | 11/07       | 15:34      | 2m       | MANUAL    | SOLICITUD DE DISTRIBUIDOR / PARA CERRAR TRAMO DE LINEA HACIA CLIENTE  | 2.72  | 90.67    | CLESA       |
| CLESA-OPIC(4-80)  | 11/07        | 19:55       | 11/07       | 19:56      | 1m       | NO INDICO | FALLA EN LÍNEA / SE LE INFORMO A ETESAL QUE NO INDICO PROTECCION. FUERTE LLUVIA CON DESCARGA ELECTRICAS.  | 12.71 | 211.83   | CLESA       |
| CLESA-OPIC(4-81)  | 11/07        | 19:55       | 11/07       | 19:57      | 2m       | NO INDICO | FALLA EN LÍNEA / SE LE INFORMO A ETESAL QUE NO INDICO PROTECCION. FUERTE LLUVIA CON DESCARGA ELECTRICAS.  | 0.02  | 0.67     | CLESA       |
| DELSUR-SANA(4-84) | 11/07        | 19:59       | 11/07       | 20:00      | 1m       | 51        | FALLA EN LÍNEA / INDICO 59N.FUERTE LLUVIA CON DESCARGA ELECTRICAS.  | 0.88  | 14.67    | DELSUR      |
| CLESA-OPIC(4-81)  | 11/07        | 19:59       | 11/07       | 20:01      | 2m       | 51        | FALLA EN LÍNEA / INDICO 59N. FUERTE LLUVIA CON DESCARGA ELECTRICAS.   | 0.02  | 0.67     | CLESA       |
| DELSUR-ATEO(4-81) | 11/07        | 20:06       | 11/07       | 20:08      | 2m       | 51        | FALLA EN LÍNEA / INDICO 59N FUERTE LLUVIA CON DESCARGA ELECTRICAS.  | 11.72 | 390.67   | DELSUR      |
| CLESA-ATEO(3-84)  | 11/07        | 20:06       | 11/07       | 20:07      | 1m       | 51        | FALLA EN LÍNEA / FUERTE LLUVIA CON DESCARGA ELECTRICAS.   | 4.26  | 71.00    | CLESA       |
| CAESS-SRAF(4-83)  | 12/07        | 17:13       | 12/07       | 17:15      | 2m       | 51        | FALLA EN LÍNEA / INDICO TAMBIEN 59N. CAESS REPORTA LLUVIA EN LA ZONA.   | 4.48  | 149.33   | CAESS       |
| DELSUR-SOYA(4-85) | 13/07        | 06:02       | 13/07       | 06:03      | 1m       | 51, 51NS  | FALLA EN LÍNEA / INDICO TAMBIEN 59N.  | 3.62  | 60.33    | DELSUR      |
| B&D-SBAR(2-82)    | 13/07        | 13:10       | 13/07       | 13:13      | 3m       | 51        | FALLA EN LÍNEA /  | 3.14  | 157.00   | B&D         |
| CLESA-AHUA(4-81)  | 13/07        | 15:45       | 13/07       | 15:47      | 2m       | MANUAL    | SOLICITUD DE DISTRIBUIDOR / PARA NORMALIZAR LA CARGA DEL INT.35-4-83. QUE SE ENCONTRABA TRANSFERIDA EN ESTE CIRCUITO.   | 18.22 | 607.33   | CLESA       |
| CLESA-ATEO(4-80)  | 14/07        | 15:19       | 14/07       | 16:30      | 1h 11m   | MANUAL    | SOLICITUD DE DISTRIBUIDOR / PARA CORREGIR ARCO ELECTRICO EN CUCHILLAS TRIPOLARES DE CLESA.  | 0.39  | 461.50   | CLESA       |
| CLESA-OPIC(4-80)  | 15/07        | 01:01       | 15/07       | 01:04      | 3m       | manual    | SOLICITUD DE DISTRIBUIDOR / PARA RETORNAR CARGA AL INT.4-80 DE ATEOS.   | 7.96  | 398.00   | CLESA       |
| EEO-SMIG(4-84)    | 15/07        | 06:56       | 15/07       | 06:57      | 1m       | 51        | FALLA EN LÍNEA / 59N.   | 7.61  | 126.83   | EEO         |
| DELSUR-SANA(4-84) | 15/07        | 19:03       | 15/07       | 19:04      | 1m       | 51        | FALLA EN LÍNEA / INDICO TAMBIEN 59N. DELSUR REPORTA FUERTE LLUVIA EN LA ZONA.   | 0.79  | 13.17    | DELSUR      |
| EEO-15SE(4-83)    | 15/07        | 19:14       | 16/07       | 23:12      | 27h 58m  | 51, 51NS  | FALLA EN LÍNEA / INDICO 59N. PRUEBA (-) A LAS 19:15 H. OPERARON MISMAS PROTECCIONES. SE ENCONTRO ENREDADERAS SOBRE LA LINEA. ENS CALC. / Carga reconectada a las 19:41 del 15-07-2009 | 3.30  | 3,108.98 | EEO         |

## Interrupciones del servicio

| Entrega           | Fecha Inicio | Hora Inicio | Fecha Final | Hora Final | Duración | Rele     | Motivo  | MW    | KWh      | Responsable |
|-------------------|--------------|-------------|-------------|------------|----------|----------|---|-------|----------|-------------|
| CLESA-ATEO(3-84)  | 15/07        | 19:16       | 15/07       | 21:50      | 2h 34m   | 51       | FALLA EN LÍNEA / PRUEBA (-) A LAS 19:17 HRS., OPERANDO MISMA PROTECCION. ENS CALC.5760 KWH  | 4.27  | 5,760.11 | CLESA       |
| EEO-15SE(4-84)    | 15/07        | 19:39       | 15/07       | 19:41      | 2m       | MANUAL   | SOLICITUD DE DISTRIBUIDOR / PARA RECUPERAR CARGA DE SUB STGO MARIA (INT.18-4-83).   | 11.79 | 393.00   | EEO         |
| CLESA-ACAJ(4-81)  | 15/07        | 20:04       | 15/07       | 20:05      | 1m       | 51       | FALLA EN LÍNEA / INDICO TAMBIEN 59N. CLESA REPORTA LLUVIA EN LA ZONA.   | 7.75  | 129.17   | CLESA       |
| u03-ACAJ(4-82)    | 15/07        | 20:04       | 15/07       | 20:05      | 1m       | 51NS     | FALLA EN LÍNEA / INDICO TAMBIEN 59N.  | 1.07  | 17.83    | u03         |
| CAESS-SRAF(4-83)  | 16/07        | 05:23       | 16/07       | 05:24      | 1m       | 51       | FALLA EN LÍNEA / INDICO TAMBIEN 59N.  | 3.64  | 60.67    | CAESS       |
| CLESA-ATEO(3-84)  | 16/07        | 07:05       | 16/07       | 07:07      | 2m       | MANUAL   | SOLICITUD DE DISTRIBUIDOR / PARA PROBAR TRAMO DE LINEA.   | 1.97  | 65.67    | CLESA       |
| CLESA-ACAJ(4-81)  | 16/07        | 08:46       | 16/07       | 08:48      | 2m       | MANUAL   | SOLICITUD DE DISTRIBUIDOR /   | 4.14  | 138.00   | CLESA       |
| CLESA-ATEO(3-84)  | 16/07        | 15:26       | 16/07       | 15:30      | 4m       | MANUAL   | SOLICITUD DE DISTRIBUIDOR / PARA CONECTAR CLIENTE INDUSTRIAL.   | 2.67  | 178.00   | CLESA       |
| DELSUR-SOYA(4-85) | 16/07        | 16:41       | 16/07       | 16:42      | 1m       | 51,515NS | FALLA EN LÍNEA / 59N.   | 5.40  | 90.00    | DELSUR      |
| CLESA-ACAJ(4-81)  | 16/07        | 18:16       | 16/07       | 18:18      | 2m       | MANUAL   | SOLICITUD DE DISTRIBUIDOR / MANIOBRAR CUCHILLAS.  | 4.19  | 139.67   | CLESA       |
| B&D-SBAR(2-82)    | 17/07        | 06:11       | 17/07       | 06:13      | 2m       | 51       | FALLA EN LÍNEA /  | 3.13  | 104.33   | B&D         |
| CLESA-ATEO(3-84)  | 17/07        | 10:25       | 17/07       | 11:48      | 1h 23m   | 51       | FALLA EN LÍNEA / 10:26 H. PRUEBA (-), CLESA RETIRO ENREDADERA SOBRE CIRCUITO.   | 2.86  | 3,956.33 | CLESA       |
| DELSUR-PEDR(4-82) | 17/07        | 14:47       | 17/07       | 14:48      | 1m       | 51NS     | FALLA EN LÍNEA / INDICO 59N.  | 3.71  | 61.83    | DELSUR      |
| DELSUR-SANA(4-84) | 17/07        | 17:49       | 17/07       | 18:47      | 58m      | 51N      | FALLA EN LÍNEA / INDICO 59N. PRUEBA NEG. A LAS 17:50 H. CON CIERRE DEJA FUERA LA CARGA.   | 0.61  | 589.67   | DELSUR      |
| DELSUR-SANA(4-84) | 17/07        | 18:49       | 17/07       | 19:50      | 1h 1m    | MANUAL   | SOLICITUD DE DISTRIBUIDOR / PARA RECUPERAR CARGA. 18:50 H. PRUEBA NEG. CON CIERRE DEJA FUERA ANDA LAS MERCEDES. ENS CALC.                 | 0.00  | 610.00   | DELSUR      |
| DELSUR-SOYA(4-84) | 18/07        | 00:51       | 18/07       | 00:52      | 1m       | 51       | FALLA EN LÍNEA /  | 4.58  | 76.33    | DELSUR      |
| DELSUR-SOYA(4-85) | 18/07        | 03:42       | 18/07       | 03:44      | 2m       | 59N      | FALLA EN LÍNEA / ELIMINAR INDICACION DE 59N.  | 3.21  | 107.00   | DELSUR      |
| DELSUR-SOYA(4-84) | 18/07        | 03:42       | 18/07       | 03:44      | 2m       | 59N      | FALLA EN LÍNEA / DESBALANCE DE VOLTAJE.   | 4.10  | 136.67   | DELSUR      |
| EEO-15SE(4-84)    | 18/07        | 07:10       | 18/07       | 07:14      | 4m       | MANUAL   | SOLICITUD DE DISTRIBUIDOR / PARA NORMALIZAR CARGA DEL 18-4-83. LA CARGA ESTABA TRANSFERIDA DESDE EL 15-JUL A LAS 19:41 H.                 | 9.44  | 629.33   | EEO         |
| DELSUR-SANA(4-84) | 18/07        | 19:26       | 18/07       | 19:59      | 33m      | MANUAL   | SOLICITUD DE DISTRIBUIDOR / RECUPERAR CIRCUITO HACIA PLANTA DE BOMBEO LAS MERCEDES. INFORMAN QUE RETIRARON RAMAS DE ARBOL SOBRE CIRCUITO. | 0.89  | 489.50   | DELSUR      |

## Interrupciones del servicio

| Entrega           | Fecha Inicio | Hora Inicio | Fecha Final | Hora Final | Duración | Rele    | Motivo   | MW    | KWh        | Responsable |
|-------------------|--------------|-------------|-------------|------------|----------|---------|--|-------|------------|-------------|
| EEO-SMIG(4-85)    | 19/07        | 06:20       | 19/07       | 17:56      | 11h 36m  | MANUAL  | MANTENIMIENTO PROGRAMADO / PAMM DE ETESAL, CARGA TRANSFERIDA A INT. 40-4-81. / Carga reconectada a las 06:23 del 19-07-2009    | 3.59  | 179.50     | ETESAL      |
| DEUSEM-OZAT(4-81) | 19/07        | 06:22       | 19/07       | 06:23      | 1m       | MANUAL  | SOLICITUD DE DISTRIBUIDOR / RECUPERAR CARGA DE INT. 34-4-85.   | 7.66  | 127.67     | ETESAL      |
| EEO-SMIG(4-81)    | 19/07        | 07:01       | 19/07       | 17:25      | 10h 24m  | MANUAL  | MANTENIMIENTO PROGRAMADO / PAMM. TODA CARGA FUERA. RETRASO POR PARTE DE EEO. ENS EEO=5960, ENS                                 | 12.49 | 166,230.00 | ETESAL      |
| EEO-SMIG(4-82)    | 19/07        | 07:01       | 19/07       | 17:25      | 10h 24m  | MANUAL  | MANTENIMIENTO PROGRAMADO / PAMM. TODA CARGA FUERA. RETRASO POR PARTE DE EEO. ENS EEO=1320, ENS ETESAL=91220.                   | 8.45  | 92,540.00  | ETESAL      |
| EEO-SMIG(4-83)    | 19/07        | 07:01       | 19/07       | 17:25      | 10h 24m  | MANUAL  | MANTENIMIENTO PROGRAMADO / PAMM. TODA CARGA FUERA. RETRASO POR PARTE DE EEO. ENS EEO=1890, ENS ETESAL=38890.                   | 3.33  | 40,780.00  | ETESAL      |
| EEO-SMIG(4-84)    | 19/07        | 07:01       | 19/07       | 17:25      | 10h 24m  | MANUAL  | MANTENIMIENTO PROGRAMADO / PAMM. TODA CARGA FUERA. RETRASO POR PARTE DE EEO. ENS EEO=1400, ENS ETESAL=77730.                   | 7.60  | 79,130.00  | ETESAL      |
| EEO-SMIG(4-86)    | 19/07        | 07:02       | 19/07       | 17:25      | 10h 23m  | MANUAL  | MANTENIMIENTO PROGRAMADO / PAMM. TODA CARGA FUERA. RETRASO POR PARTE DE EEO. ENS EEO=1410, ENS ETESAL=61550.                   | 6.21  | 62,960.00  | ETESAL      |
| DELSUR-SOYA(4-85) | 19/07        | 15:01       | 19/07       | 15:03      | 2m       | 51      | FALLA EN LÍNEA / INDICO 59N. PRUEBA NEGATIVA 15:02 HRS. DEJA AFECTADA LA CARGA DE OLOCUILTA.CARGA RECONECTADA A LAS 15:18 HRS. | 2.44  | 691.33     | DELSUR      |
| DELSUR-PEDR(4-83) | 19/07        | 15:33       | 19/07       | 15:35      | 2m       | 51NS    | FALLA EN LÍNEA / INIDICO 59N.  | 7.19  | 239.67     | DELSUR      |
| DELSUR-PEDR(4-83) | 19/07        | 16:53       | 19/07       | 16:55      | 2m       | 51N     | FALLA EN LÍNEA / INDICO 59N.   | 6.13  | 204.33     | DELSUR      |
| DEUSEM-OZAT(4-81) | 19/07        | 17:54       | 19/07       | 17:55      | 1m       | MANUAL  | SOLICITUD DE DISTRIBUIDOR / PARA NORMALIZAR LA CARGA DEL INT. 34-4-85. POR PAMM EN SMIG.                                       | 13.08 | 218.00     | ETESAL      |
| ANDA-SANA(4-85)   | 21/07        | 10:43       | 21/07       | 10:45      | 2m       | 51, 51N | FALLA EN LÍNEA / INDICO 59N.   | 9.79  | 326.33     | ANDA        |
| EEO-SMIG(4-83)    | 21/07        | 18:21       | 21/07       | 18:22      | 1m       | 51      | FALLA EN LÍNEA / INDICO 59N, LLUVIA.   | 6.06  | 101.00     | EEO         |
| EEO-SMIG(4-84)    | 21/07        | 18:21       | 21/07       | 18:22      | 1m       | 51      | FALLA EN LÍNEA / LLUVIA.   | 9.63  | 160.50     | EEO         |
| EEO-SMIG(4-84)    | 21/07        | 18:36       | 21/07       | 18:38      | 2m       | 51      | FALLA EN LÍNEA / 18:37 H. PRUEBA (-), DISPARO AL MOMENTO QUE EEO TRATO DE RECUPERAR CARGA DE SANTA ROSA.                       | 10.51 | 350.33     | EEO         |
| EEO-SMIG(4-82)    | 21/07        | 21:14       | 21/07       | 21:17      | 3m       | MANUAL  | SOLICITUD DE DISTRIBUIDOR / CERRAR RAMAL HACIA GOTERA Y SANTA ROSA.  | 0.84  | 42.00      | EEO         |
| DEUSEM-OZAT(4-81) | 21/07        | 21:42       | 21/07       | 21:43      | 1m       | 51      | FALLA EN LÍNEA / LLUVIA.   | 9.42  | 157.00     | DEUSEM      |
| DEUSEM-OZAT(4-82) | 21/07        | 21:42       | 21/07       | 21:43      | 1m       | 51      | FALLA EN LÍNEA / LLUVIA.   | 4.05  | 67.50      | DEUSEM      |
| EEO-SMIG(4-83)    | 21/07        | 21:53       | 21/07       | 21:54      | 1m       | MANUAL  | SOLICITUD DE DISTRIBUIDOR / TOMAR PARTE DE CARGA DE INT. 4-84.   | 5.44  | 90.67      | EEO         |

## Interrupciones del servicio

| Entrega           | Fecha Inicio | Hora Inicio | Fecha Final | Hora Final | Duración | Rele     | Motivo   | MW    | KWh       | Responsable |
|-------------------|--------------|-------------|-------------|------------|----------|----------|--|-------|-----------|-------------|
| EEO-SMIG(4-84)    | 21/07        | 21:53       | 21/07       | 21:54      | 1m       | MANUAL   | SOLICITUD DE DISTRIBUIDOR / TRANSFERIR PARTE DE CARGA A INT. 4-83 Y RECUPERAR CARGA DE SANTA ROSA.                           | 8.50  | 141.67    | EEO         |
| EEO-SMIG(4-82)    | 21/07        | 22:46       | 21/07       | 22:47      | 1m       | MANUAL   | SOLICITUD DE DISTRIBUIDOR / RECUPERAR CARGA DE GOTERA.   | 0.66  | 11.00     | EEO         |
| DELSUR-OPIC(4-82) | 22/07        | 06:02       | 22/07       | 06:03      | 1m       | 51       | FALLA EN LÍNEA / INDICO 59N.   | 12.60 | 210.00    | DELSUR      |
| DELSUR-SANA(4-84) | 22/07        | 17:24       | 22/07       | 17:25      | 1m       | 51, 51N  | FALLA EN LÍNEA / INDICO 59N.   | 0.98  | 16.33     | DELSUR      |
| EEO-SMIG(4-83)    | 22/07        | 17:38       | 22/07       | 17:39      | 1m       | MANUAL   | SOLICITUD DE DISTRIBUIDOR / PARA NORMALIZAR CARGAS CON EL INT. 4-84.   | 9.24  | 154.00    | EEO         |
| EEO-SMIG(4-84)    | 22/07        | 17:38       | 22/07       | 17:39      | 1m       | MANUAL   | SOLICITUD DE DISTRIBUIDOR / PARA NORMALIZAR CARGAS CON EL INT. 4-83.   | 6.70  | 111.67    | EEO         |
| CLESA-ATEO(4-82)  | 22/07        | 18:02       | 22/07       | 18:04      | 2m       | 59N      | FALLA EN LÍNEA / ELIMINAR INDICACION DE 59N.   | 7.11  | 237.00    | CLESA       |
| CLESA-ATEO(4-83)  | 22/07        | 18:02       | 22/07       | 18:04      | 2m       | 59N      | FALLA EN LÍNEA / ELIMINAR INDICACION DE 59N.   | 0.33  | 11.00     | CLESA       |
| CLESA-ATEO(4-80)  | 22/07        | 18:02       | 22/07       | 18:36      | 34m      | 59N      | FALLA EN LÍNEA / DESBALANCE DE VOLTAJE. PRUEBA NEG. A LAS 18:03 H. CON CIERRE DEJA FUERA SUB-AMERICAN PARK Y SUB-SAN ANDRES. | 14.66 | 8,307.00  | CLESA       |
| EEO-15SE(4-83)    | 22/07        | 18:02       | 22/07       | 18:03      | 1m       | 51       | FALLA EN LÍNEA / INDICO 59N.   | 2.67  | 44.50     | EEO         |
| EEO-SMIG(4-85)    | 22/07        | 18:42       | 22/07       | 19:23      | 41m      | MANUAL   | FALLA EN SUBESTACIONES / DE EMERGENCIA POR FALLA EN UN FUSIBLE DE UN TP. ENS CALC.   | 5.01  | 4,790.00  | ETESAL      |
| CLESA-SANA(4-83)  | 22/07        | 19:04       | 22/07       | 19:05      | 1m       | 51       | FALLA EN LÍNEA / INDICO 59N  | 11.09 | 184.83    | CLESA       |
| CLESA-AHUA(4-81)  | 22/07        | 19:36       | 22/07       | 19:37      | 1m       | 51       | FALLA EN LÍNEA / INDICO 59N.   | 15.31 | 255.17    | CLESA       |
| CLESA-ATEO(4-80)  | 22/07        | 20:27       | 22/07       | 20:32      | 5m       | MANUAL   | FALLA EN LÍNEA / PARA RECUPERAR LA CARGA DE SUB-AMERICAN PARK. SUB-SAN ANDRES RECUPERADA HASTA LAS 20:36 H. ENS CALC.        | 3.17  | 25,413.00 | CLESA       |
| EEO-15SE(4-84)    | 22/07        | 21:43       | 22/07       | 21:44      | 1m       | 51, 51N  | FALLA EN LÍNEA / INDICO 59N.   | 5.81  | 96.83     | EEO         |
| EEO-15SE(4-84)    | 22/07        | 21:47       | 22/07       | 22:56      | 1h 9m    | 51, 51N  | FALLA EN LÍNEA / INDICO 59N. PRUEBA NEG. A LAS 21:48, 21:49, 21:51 H.  | 5.80  | 6,670.00  | EEO         |
| EEO-SMIG(4-86)    | 22/07        | 21:53       | 22/07       | 21:54      | 1m       | MANUAL   | FALLA EN LÍNEA / PARA TRANSFERIR LAS CARGAS DE SUB-C. BARRIOS, SUB-CHAPELTIQUE Y SUB-CHINAMECA.                              | 7.87  | 131.17    | EEO         |
| EEO-15SE(4-84)    | 22/07        | 23:04       | 22/07       | 23:05      | 1m       | MANUAL   | SOLICITUD DE DISTRIBUIDOR / PARA RECUPERAR CARGA FUERA DE SUB-SANTA ANITA. ENS CALC.   | 0.00  | 3,952.00  | EEO         |
| DELSUR-SOYA(4-85) | 23/07        | 14:48       | 23/07       | 14:49      | 1m       | 51, 51NS | FALLA EN LÍNEA / TAMBIEN OPERO 59N.  | 5.88  | 98.00     | DELSUR      |
| DELSUR-SOYA(4-85) | 23/07        | 14:55       | 23/07       | 15:00      | 5m       | 51,51NS  | FALLA EN LÍNEA / INDICO 59N.   | 5.20  | 433.33    | DELSUR      |
| CLESA-AHUA(4-81)  | 23/07        | 19:32       | 23/07       | 19:33      | 1m       | 50,51    | FALLA EN LÍNEA / INDICO 59N. REPORTARON FUERTE TORMENTA EN LA ZONA.  | 15.83 | 263.83    | CLESA       |

## Interrupciones del servicio

| Entrega           | Fecha Inicio | Hora Inicio | Fecha Final | Hora Final | Duración | Rele    | Motivo   | MW    | KWh       | Responsable |
|-------------------|--------------|-------------|-------------|------------|----------|---------|--|-------|-----------|-------------|
| DELSUR-SANA(4-84) | 24/07        | 06:40       | 24/07       | 06:41      | 1m       | 51,51NS | FALLA EN LÍNEA / INDICO 59N.   | 0.56  | 9.33      | DELSUR      |
| EEO-SMIG(4-86)    | 24/07        | 21:10       | 24/07       | 21:11      | 1m       | MANUAL  | SOLICITUD DE DISTRIBUIDOR / RETORNAR CARGA QUE CORRESPONDE A INT. 18-4-84.   | 16.57 | 276.17    | EEO         |
| EEO-15SE(4-84)    | 24/07        | 21:10       | 24/07       | 21:11      | 1m       | MANUAL  | SOLICITUD DE DISTRIBUIDOR / NORMALIZAR CARGA QUE ESTABA TRANSFERIDA A INT. 34-4-86.                                    | 1.96  | 32.67     | EEO         |
| CLESA-SONS(4-82)  | 25/07        | 13:39       | 25/07       | 13:40      | 1m       | 50/51   | FALLA EN LÍNEA / FUERTE TORMENTA EN LA ZONA.   | 6.56  | 109.33    | CLESA       |
| CLESA-ACAJ(3-81)  | 25/07        | 13:39       | 25/07       | 22:18      | 8h 39m   | 51      | FALLA EN LÍNEA / PRUEBA NEGATIVA A LAS 13:40 HRS. CLESA REPARO LINEA PRIMARIA ROTA POR EL DESVIO A LA NUEVA .ENS CALC. | 5.93  | 5,982.55  | CLESA       |
| CLESA-SONS(4-82)  | 25/07        | 13:47       | 25/07       | 13:48      | 1m       | 50/51   | FALLA EN LÍNEA / INDICO 59N. FUERTE TORMENTA EN LA ZONA.   | 5.93  | 98.83     | CLESA       |
| DELSUR-SOYA(4-85) | 25/07        | 20:30       | 25/07       | 20:31      | 1m       | 51      | FALLA EN LÍNEA / INDICO TAMBIEN 59N. DELSUR REPORTA LLUVIA EN LA ZONA.   | 0.56  | 9.33      | DELSUR      |
| DELSUR-SRAF(4-81) | 26/07        | 22:18       | 26/07       | 22:19      | 1m       | 51      | FALLA EN LÍNEA /   | 3.72  | 62.00     | DELSUR      |
| EEO-15SE(4-83)    | 27/07        | 00:45       | 27/07       | 00:46      | 1m       | 51,51NS | FALLA EN LÍNEA / INDICO 59N.   | 1.33  | 22.17     | EEO         |
| CLESA-SONS(4-82)  | 27/07        | 01:45       | 27/07       | 01:47      | 2m       | 50/51   | FALLA EN LÍNEA /   | 5.33  | 177.67    | CLESA       |
| CLESA-SONS(4-82)  | 27/07        | 02:50       | 27/07       | 02:57      | 7m       | MANUAL  | SOLICITUD DE DISTRIBUIDOR / SUSTITUIR FUSIBLE DE POTENCIA.   | 4.23  | 493.50    | CLESA       |
| CAESS-SRAF(4-82)  | 27/07        | 15:14       | 27/07       | 15:15      | 1m       | 51      | FALLA EN LÍNEA /   | 6.91  | 115.17    | CAESS       |
| CLESA-ATEO(3-84)  | 29/07        | 06:50       | 29/07       | 09:19      | 2h 29m   | 51      | FALLA EN LÍNEA / PRUEBA (-) A LAS 06:51 H. CON CIERRE DEJA FUERA SUB-LOS LAGARTOS.                                     | 2.16  | 5,364.00  | CLESA       |
| CLESA-ATEO(3-84)  | 29/07        | 10:05       | 29/07       | 10:07      | 2m       | MANUAL  | SOLICITUD DE DISTRIBUIDOR / PARA RECUPERAR SUB-LOS LAGARTOS, DEJA FUERA UN CLIENTE INDUSTRIAL. ENS CALC.               | 1.31  | 2,396.00  | CLESA       |
| CLESA-SANA(4-82)  | 29/07        | 13:15       | 29/07       | 13:16      | 1m       | 51, 51N | FALLA EN LÍNEA / INDICO 59N.   | 12.19 | 203.17    | CLESA       |
| CLESA-ATEO(3-84)  | 29/07        | 16:25       | 29/07       | 16:26      | 1m       | MANUAL  | SOLICITUD DE DISTRIBUIDOR / CERRAR CUCHILLAS DE CORTE.   | 2.84  | 47.33     | CLESA       |
| CAESS-SRAF(4-82)  | 29/07        | 17:39       | 29/07       | 17:40      | 1m       | 51      | FALLA EN LÍNEA / LLUVIA FUERTE EN LA ZONA.   | 4.44  | 74.00     | CAESS       |
| EEO-SMIG(4-85)    | 29/07        | 18:47       | 29/07       | 18:48      | 1m       | 51      | FALLA EN LÍNEA / INDICO 59N.   | 5.08  | 84.67     | EEO         |
| DEUSEM-OZAT(4-81) | 29/07        | 19:19       | 29/07       | 19:22      | 3m       | 51      | FALLA EN LÍNEA / LLUVIA FUERTE EN LA ZONA.   | 8.80  | 440.00    | DEUSEM      |
| DEUSEM-OZAT(4-82) | 29/07        | 19:19       | 30/07       | 00:13      | 4h 54m   | 51      | FALLA EN LÍNEA / 59N. LLUVIA FUERTE EN LA ZONA. ENS CALC.  | 6.50  | 13,368.00 | DEUSEM      |
| EEO-SMIG(4-85)    | 29/07        | 19:20       | 29/07       | 19:23      | 3m       | 51      | FALLA EN LÍNEA / INDICO 59N. FUERTE LLUVIA EN LA ZONA.   | 3.65  | 182.50    | EEO         |



## Interrupciones del servicio

| Entrega           | Fecha Inicio | Hora Inicio | Fecha Final | Hora Final | Duración | Rele        | Motivo   | MW    | KWh       | Responsable |
|-------------------|--------------|-------------|-------------|------------|----------|-------------|--|-------|-----------|-------------|
| LAGEO-PEDR(4-81)  | 29/07        | 19:22       | 29/07       | 19:27      | 5m       | CERO VOLTAJ | FALLA EN SUBESTACIONES / DISPARO DE LA TRANSMISION STOM-EPED DEJANDO A CERO VOLTAJE LA SUBESTACION EPED.   | 15.41 | 1,284.17  | ETESAL      |
| DELSUR-PEDR(4-82) | 29/07        | 19:22       | 29/07       | 19:28      | 6m       | CERO VOLTAJ | FALLA EN SUBESTACIONES / DISPARO DE LA TRANSMISION STOM-EPED DEJANDO A CERO VOLTAJE LA SUBESTACION EPED.   | 6.25  | 625.00    | ETESAL      |
| DELSUR-PEDR(4-83) | 29/07        | 19:22       | 29/07       | 19:28      | 6m       | CERO VOLTAJ | FALLA EN SUBESTACIONES / DISPARO DE LA TRANSMISION STOM-EPED DEJANDO A CERO VOLTAJE LA SUBESTACION EPED.   | 8.44  | 844.00    | ETESAL      |
| DELSUR-PEDR(4-84) | 29/07        | 19:22       | 29/07       | 19:28      | 6m       | CERO VOLTAJ | FALLA EN SUBESTACIONES / DISPARO DE LA TRANSMISION STOM-EPED DEJANDO A CERO VOLTAJE LA SUBESTACION EPED.   | 3.19  | 319.00    | ETESAL      |
| DELSUR-SANA(4-84) | 29/07        | 19:31       | 29/07       | 20:32      | 1h 1m    | 51,51NS     | FALLA EN LÍNEA / INDICO 59N. LUVIA   | 0.91  | 925.17    | DELSUR      |
| DELSUR-ATEO(4-81) | 29/07        | 19:50       | 29/07       | 22:50      | 3h 0m    | 51          | FALLA EN LÍNEA / PRUEBA NEGATIVA 20:01 ENS.CALC.   | 12.63 | 47,680.00 | DELSUR      |
| CLESA-ATEO(4-80)  | 29/07        | 19:51       | 30/07       | 22:23      | 26h 32m  | 51          | FALLA EN LÍNEA / PRUEBA (-) 19:53 ENS CALC. / Carga reconectada a las 22:01 del 29-07-2009   | 9.70  | 32,370.00 | CLESA       |
| CLESA-ATEO(3-85)  | 29/07        | 19:52       | 30/07       | 00:09      | 4h 17m   | 51          | FALLA EN LÍNEA / PRUEBA NEGATIVA 19:58 ENS CALC.   | 2.69  | 24,080.00 | CLESA       |
| CLESA-SONS(4-82)  | 29/07        | 20:22       | 29/07       | 20:23      | 1m       | 50/51       | FALLA EN LÍNEA / INDICO 59N. LLUVIA  | 6.40  | 106.67    | CLESA       |
| CLESA-OPIC(4-80)  | 29/07        | 21:57       | 29/07       | 22:01      | 4m       | MANUAL      | SOLICITUD DE DISTRIBUIDOR / PARA RECUPERAR PARTE DE CARGA DEL INT.44-4-80.   | 4.70  | 313.33    | CLESA       |
| CLESA-SONS(4-82)  | 29/07        | 21:58       | 30/07       | 06:54      | 8h 56m   | 50/51       | FALLA EN LÍNEA / INDICO 59N, PRUEBA NEGATIVA 22:04 ENS CALC HASTA LA 23:59.  | 3.80  | 8,210.00  | CLESA       |
| DELSUR-ATEO(4-81) | 29/07        | 22:58       | 29/07       | 23:04      | 6m       | MANUAL      | SOLICITUD DE DISTRIBUIDOR / PARA PROBAR UN TRAMO DE LINEA. Y RECUPERAR LA CARGA.   | 0.84  | 84.00     | DELSUR      |
| DEUSEM-OZAT(4-82) | 30/07        | 00:14       | 30/07       | 05:08      | 4h 54m   | MANUAL      | SOLICITUD DE DISTRIBUIDOR / PARA CERRAR CUCHILLAS Y COMPLETAR CIRCUITO. PRUEBA NEGATIVA A LAS 00:21 HRS.ENS CALC DESDE LAS CERO HASTA EL CIERRE. CAMBIARON AISLADORES. | 0.00  | 9,323.25  | DEUSEM      |
| DEUSEM-OZAT(4-81) | 30/07        | 03:41       | 30/07       | 05:07      | 1h 26m   | MANUAL      | SOLICITUD DE DISTRIBUIDOR / POR EMERGENCIA.CAMBIO AISLAMIENTO, LA LINEA DEL CKTO. 4-82 PASAN CERCA Y POR PRECAUCION SE REQUIERE CERO VOLTAJE                           | 6.54  | 9,374.00  | DEUSEM      |
| CLESA-ACAJ(4-81)  | 30/07        | 05:11       | 30/07       | 05:13      | 2m       | MANUAL      | SOLICITUD DE DISTRIBUIDOR / PARA RECUPERAR PARTE DE CARGA DEL INT.41-4-82. SUBESTACION SAN JUAN.   | 1.78  | 59.33     | CLESA       |
| EEO-15SE(4-84)    | 30/07        | 16:57       | 30/07       | 16:58      | 1m       | 51, 51NS    | FALLA EN LÍNEA / INDICO 59N. LLUVIA.   | 7.84  | 130.67    | EEO         |
| EEO-SMIG(4-83)    | 30/07        | 17:27       | 30/07       | 17:28      | 1m       | 51          | FALLA EN LÍNEA / INDICO 59N. LLUVIA  | 2.78  | 46.33     | EEO         |

## Interrupciones del servicio

| Entrega           | Fecha Inicio | Hora Inicio | Fecha Final | Hora Final | Duración | Rele      | Motivo   | MW    | KWh       | Responsable |
|-------------------|--------------|-------------|-------------|------------|----------|-----------|--|-------|-----------|-------------|
| EEO-SMIG(4-84)    | 30/07        | 17:27       | 30/07       | 17:28      | 1m       | 51        | FALLA EN LÍNEA / INDICO 59N. LLUVIA  | 7.07  | 117.83    | EEO         |
| EEO-SMIG(4-85)    | 30/07        | 17:30       | 30/07       | 17:31      | 1m       | 51NS      | FALLA EN LÍNEA / INDICO 59N. LLUVIA  | 3.95  | 65.83     | EEO         |
| EEO-SMIG(4-85)    | 30/07        | 17:32       | 30/07       | 20:22      | 2h 50m   | 51NS      | FALLA EN LÍNEA / INDICO 59N. 17:33, 17:42 PRUEBAS (-). PARTE CARGA RECUPERADA EN INT. 40-4-81, FUERA EL DELIRIO (2MW) HASTA EL CIERRE. DESLAVE EN ESTRUCTURAS. ENS CALC. | 3.95  | 6,850.00  | EEO         |
| DEUSEM-OZAT(4-81) | 30/07        | 17:51       | 30/07       | 17:53      | 2m       | MANUAL    | SOLICITUD DE DISTRIBUIDOR / RECUPERAR CARGA DE INT. 34-4-85.   | 11.19 | 373.00    | DEUSEM      |
| EEO-SMIG(4-83)    | 30/07        | 18:21       | 30/07       | 18:22      | 1m       | MANUAL    | SOLICITUD DE DISTRIBUIDOR / TOMAR PARTE DE CARGA DE INT. 4-84.   | 3.66  | 61.00     | EEO         |
| EEO-SMIG(4-84)    | 30/07        | 18:21       | 30/07       | 18:22      | 1m       | MANUAL    | SOLICITUD DE DISTRIBUIDOR / TRANSFERIR PARTE DE CARGA A INT. 4-83.   | 9.85  | 164.17    | EEO         |
| DEUSEM-OZAT(4-81) | 30/07        | 18:51       | 30/07       | 20:45      | 1h 54m   | NO INDICO | FALLA EN LÍNEA / 18:52, 18:56 PRUEBAS (-), FUERA CALIFORNIA HASTA LAS 23:52 HRS. ENS CALCULADA.  | 12.13 | 33,340.00 | DEUSEM      |
| DELSUR-PEDR(4-83) | 30/07        | 18:57       | 30/07       | 19:00      | 3m       | 51NS      | FALLA EN LÍNEA / INDICO 59N, DELSUR REALIZO COMPROBACIONES ANTES DE SOLICITAR PRUEBA.  | 8.16  | 408.00    | DELSUR      |
| DEUSEM-OZAT(4-82) | 30/07        | 19:07       | 30/07       | 22:09      | 3h 2m    | MANUAL    | SOLICITUD DE DISTRIBUIDOR / CIRCUITO HABIA PERDIDO TODA SU CARGA PREVIAMENTE. FUSIBLES QUEMADOS SUB-LA CONCORDIA. ENS CALC.  | 0.00  | 21,100.00 | DEUSEM      |
| EEO-15SE(4-83)    | 30/07        | 21:28       | 30/07       | 21:29      | 1m       | MANUAL    | SOLICITUD DE DISTRIBUIDOR / RECUPERAR PARTE DE CARGA DE INT. 40-4-81 (SUB-CALIFORNIA).   | 2.07  | 34.50     | EEO         |
| EEO-15SE(4-83)    | 30/07        | 21:35       | 30/07       | 21:37      | 2m       | NO INDICO | FALLA EN LÍNEA / EEO ABRIO NUEVAMENTE RAMAL HACIA SUB-CALIFORNIA.  | 2.34  | 78.00     | EEO         |
| DEUSEM-OZAT(4-81) | 30/07        | 23:49       | 30/07       | 23:52      | 3m       | MANUAL    | SOLICITUD DE DISTRIBUIDOR / PARA NORMALIZAR CARGA DE SUB CALIFORNIA.   | 6.86  | 343.00    | DEUSEM      |
| CLESA-AHUA(4-81)  | 31/07        | 07:27       | 31/07       | 07:28      | 1m       | 50, 51    | FALLA EN LÍNEA / INDICO 59N.   | 7.50  | 125.00    | CLESA       |
| DELSUR-PEDR(4-82) | 31/07        | 09:19       | 31/07       | 13:11      | 3h 52m   | MANUAL    | MANTENIMIENTO PROGRAMADO / AL MOMENTO DE LA APERTURA NO TENIA CARGA. RECUPERO TODA LA CARGA HASTA LAS 14:11 H. ENS CALC.   | 0.00  | 17,590.00 | DELSUR      |
| CLESA-ATEO(3-84)  | 31/07        | 09:43       | 31/07       | 09:44      | 1m       | 51        | FALLA EN LÍNEA /   | 2.65  | 44.17     | CLESA       |
| DELSUR-ATEO(4-81) | 31/07        | 14:46       | 31/07       | 14:47      | 1m       | 51        | FALLA EN LÍNEA / LLUVIA EN LA ZONA.  | 11.04 | 184.00    | DELSUR      |
| CLESA-ATEO(3-84)  | 31/07        | 14:53       | 31/07       | 15:28      | 35m      | 51        | FALLA EN LÍNEA / LLUVIA EN LA ZONA. 14:54 H. PRUEBA NEG. ENS CALC.   | 1.85  | 1,079.00  | CLESA       |
| DELSUR-SANA(4-84) | 31/07        | 14:59       | 31/07       | 15:38      | 39m      | 51, 51N   | FALLA EN LÍNEA / INDICO 59N. LLUVIA EN LA ZONA. 15:00 H. PRUEBA NEG.   | 0.70  | 455.00    | DELSUR      |
| CLESA-OPIC(4-80)  | 31/07        | 15:22       | 31/07       | 15:23      | 1m       | 59N       | FALLA EN LÍNEA / DESBALANCE DE VOLTAJE.  | 18.65 | 310.83    | CLESA       |

## Interrupciones del servicio

| Entrega           | Fecha Inicio | Hora Inicio | Fecha Final | Hora Final | Duración | Rele   | Motivo  | MW    | KWh    | Responsable |
|-------------------|--------------|-------------|-------------|------------|----------|--------|---|-------|--------|-------------|
| CLESA-OPIC(4-81)  | 31/07        | 15:22       | 31/07       | 15:24      | 2m       | 59N    | FALLA EN LÍNEA / ELIMINAR INDICACION DE 59N.  | 0.02  | 0.67   | CLESA       |
| CLESA-SANA(4-83)  | 31/07        | 15:24       | 31/07       | 15:25      | 1m       | 51     | FALLA EN LÍNEA / INDICO 59N.  | 9.03  | 150.50 | CLESA       |
| CAESS-CGRA(4-81)  | 31/07        | 15:37       | 31/07       | 15:39      | 2m       | 51     | FALLA EN LÍNEA / INDICO 59N, LLUVIA EN LA ZONA.   | 11.25 | 375.00 | CAESS       |
| CLESA-ACAJ(3-81)  | 31/07        | 15:39       | 31/07       | 15:40      | 1m       | 51     | FALLA EN LÍNEA / LLUVIA EN LA ZONA.   | 2.32  | 38.67  | CLESA       |
| DELSUR-SANA(4-84) | 31/07        | 15:46       | 31/07       | 15:48      | 2m       | MANUAL | SOLICITUD DE DISTRIBUIDOR / NO TENIA CARGA EN LA APERTURA. PARA RECUPERAR LA CARGA. ENS CALC. | 0.00  | 117.00 | DELSUR      |
| CLESA-AHUA(4-81)  | 31/07        | 15:53       | 31/07       | 15:56      | 3m       | 51     | FALLA EN LÍNEA / INDICO 59N. CON CIERRE DEJA FUERA SUB-SALCOATITAN.                           | 10.50 | 525.00 | CLESA       |
| CLESA-AHUA(4-81)  | 31/07        | 16:12       | 31/07       | 16:13      | 1m       | 51     | FALLA EN LÍNEA / INDICO TAMBIEN 59N. CLESA REPORTA LLUVIA EN LA ZONA.                         | 7.39  | 123.17 | CLESA       |

## Programa Anual de Mantenimientos

|             | PLANTA/UNIDAD           | PROGRAMADO | DURACION  | REPROGRAMADO | DURACION  | EJECUTADO | DURACION  | MOTIVO    |           |   |  |
|-------------|-------------------------|------------|-----------|--------------|-----------|-----------|-----------|-----------|-----------|---|--|
| CEL         | <b>GUAJOYO</b>          |            |           |              |           |           |           |           |           |   |  |
|             | UNIDAD 1                | 08-Jun-09  | 23-Jun-09 | 16 DIAS      |           |           | 08-Jun-09 | 12-Jul-09 | 35 DIAS   | Cambio de empaque de Compuerta de Bocatoma                  |  |
| CEL         | <b>CERRON GRANDE</b>    |            |           |              |           |           |           |           |           |   |  |
|             | UNIDAD 1                | 20-Jul-09  | 03-Ago-09 | 15 DIAS      | 29-Jun-09 | 13-Jul-09 | 15 DIAS   | 29-Jun-09 | 13-Jul-09 | 15 DIAS   | Inspección de Rodete y ajuste de álabes del distribuidor         |
|             | UNIDAD 2                | 25-Jun-09  | 16-Jul-09 | 22 DIAS      | 14-Jun-09 | 04-Ago-09 | 22 DIAS   |           |           |   | Mantenimiento mayor  |
|             | <b>5 DE NOVIEMBRE</b>   |            |           |              |           |           |           |           |           |   |  |
|             | UNIDAD 1                | 23-May-09  | 07-Jun-09 | 16 DIAS      |           |           |           | 23-May-09 | 08-Jun-09 | 17 DIAS   | Mantenimiento mayor  |
|             | UNIDAD 2                | 11-Abr-09  | 13-Abr-09 | 3 DIAS       | 05-Abr-09 | 08-Abr-09 | 4 DIAS    | 05-Abr-09 | 10-Abr-09 | 6 DIAS  | Sustitución guía de Turbina                                      |
| UNIDAD 3    | 03-May-09               | 17-May-09  | 15 DIAS   |              |           |           | 03-May-09 | 17-May-09 | 15 DIAS   | Mantenimiento mayor   |  |
| UNIDAD 4    | 20-Abr-09               | 28-Abr-09  | 9 DIAS    |              |           |           | 20-Abr-09 | 29-Abr-09 | 10 DIAS   | Inspección del Generador                                    |  |
| CEL         | <b>15 DE SEPTIEMBRE</b> |            |           |              |           |           |           |           |           |   |  |
|             | UNIDAD 1                |            |           |              |           |           |           |           |           |   | Mantenimiento mayor y pendientes de Garantía                     |
| UNIDAD 2    | 19-Ene-09               | 31-Ene-09  | 13 DIAS   |              |           |           | 19-Ene-09 | 30-Ene-09 | 12 DIAS   | Mantenimiento menor y cambio de sellos de álabes de Turbina |  |
| LA GEO      | <b>AHUACHAPAN</b>       |            |           |              |           |           |           |           |           |   |  |
|             | UNIDAD 3                | 05-Jul-09  | 24-Jul-09 | 20 DIAS      |           |           |           |           |           |   | Mantenimiento mayor  |
| UNIDAD 2    | 20-Sep-09               | 31-Oct-09  | 42 DIAS   |              |           |           |           |           |           |   | Mantenimiento mayor, revisión anual                              |
| LA GEO      | <b>BERLIN</b>           |            |           |              |           |           |           |           |           |   |  |
|             | UNIDAD 3                | 12-Ene-09  | 31-Ene-09 | 20 DIAS      | 01-Feb-09 | 02-Mar-09 | 30 DIAS   | 01-Feb-09 | 15-Abr-09 | 74 DIAS   | Mantenimiento mayor  |
|             | UNIDAD 2                | 30-Ago-09  | 19-Sep-09 | 21 DIAS      | 05-Sep-09 | 20-Sep-09 | 16 DIAS   |           |           |   | Mantenimiento mayor  |
| UNIDAD 4    | 18-Oct-09               | 31-Oct-09  | 14 DIAS   | 05-Sep-09    | 14-Sep-09 | 10 DIAS   |           |           |           |   | Mantenimiento mayor, revisión anual                              |
| DUKE ENERGY | <b>ACAJUTLA</b>         |            |           |              |           |           |           |           |           |   |  |
|             | MOTOR 8                 | 01-Feb-09  | 02-Mar-09 | 30 DIAS      | 04-May-09 | 30-May-09 | 27 DIAS   | 04-May-09 | 27-May-09 | 24 DIAS   | Mantenimiento de 48,000 Hrs.                                     |
|             | MOTOR 9                 | 05-Abr-09  | 04-May-09 | 30 DIAS      |           |           |           |           |           |   | Mantenimiento de 48,000 Hrs.                                     |
|             | MOTOR 7                 | 31-May-09  | 29-Jun-09 | 30 DIAS      | 04-Oct-09 | 02-Nov-09 | 30 DIAS   |           |           |   | Mantenimiento de 48,000 Hrs.                                     |
|             | MOTOR 5                 | 02-Ago-09  | 31-Ago-09 | 30 DIAS      |           |           |           |           |           |   | Mantenimiento de 48,000 Hrs.                                     |
|             | UNIDAD 2                | 01-Sep-09  | 26-Sep-09 | 26 DIAS      |           |           |           |           |           |   | Mantenimiento de Caldera y Auxiliares.                           |
|             | UNIDAD 4                | 09-Feb-09  | 28-Feb-09 | 20 DIAS      | 08-Jun-09 | 27-Jun-09 | 20 DIAS   |           |           |   | Mantenimiento de Turbina y Sistema de Combustión.                |
|             | MOTOR 1                 | 04-Oct-09  | 02-Nov-09 | 30 DIAS      |           |           |           |           |           |   | Mantenimiento de 60,000 Hrs.                                     |
| DUKE ENERGY | <b>SOYAPANGO</b>        |            |           |              |           |           |           |           |           |   |  |
|             | MOTOR 1                 | 04-May-09  | 24-May-09 | 21 DIAS      |           |           |           |           |           |   | Mantenimiento de 16,000 Hrs.                                     |
|             | MOTOR 2                 |            |           |              |           |           |           |           |           |   |  |
| MOTOR 3     |                         |            |           |              |           |           |           |           |           |   |  |
| CENERGICA   | <b>NEJAPA POWER</b>     |            |           |              |           |           |           |           |           |   |  |
|             | MOTORES                 |            |           |              |           |           |           |           |           |   | El 75% de las semanas del año, tendran en Mantenimiento un motor |
| CESSA       | <b>CESSA</b>            |            |           |              |           |           |           |           |           |   |  |
|             | MOTOR 5                 | 09-Mar-09  | 14-Mar-09 | 6 DIAS       | 23-Feb-09 | 03-Mar-09 | 9 DIAS    | 23-Feb-09 | 03-Mar-09 | 9 DIAS  | Mantenimiento del motor  |
| MOTORES     | 06-Jul-09               | 08-Ago-09  | 34 DIAS   | 10-Ago-09    | 10-Sep-09 | 32 DIAS   |           |           |           |   | Mantenimiento en los motores                                     |
| INE         | <b>TALNIQUE</b>         |            |           |              |           |           |           |           |           |   |  |
|             | MOTORES                 |            |           |              |           |           |           |           |           |   |  |
| TEXTUFIL    | <b>TEXTUFIL</b>         |            |           |              |           |           |           |           |           |   |  |
|             | MOTOR 5                 | 02-Mar-09  | 08-Mar-09 | 7 DIAS       | 08-Abr-09 | 14-Abr-09 | 7 DIAS    | 04-Abr-09 | 08-Abr-09 | 5 DIAS  | Mantenimiento de 7,500 Hrs.                                      |
|             | MOTOR 4                 | 16-Mar-09  | 22-Mar-09 | 7 DIAS       | 16-Abr-09 | 22-Abr-09 | 7 DIAS    |           |           |   | Mantenimiento de 15,000 Hrs.                                     |
|             | MOTOR 2                 | 25-May-09  | 31-May-09 | 7 DIAS       | 08-Jul-09 | 14-Jul-09 | 7 DIAS    |           |           |   | Mantenimiento de 7,500 Hrs.                                      |
|             | MOTOR 1                 | 22-Jun-09  | 29-Jun-09 | 8 DIAS       | 28-Jul-09 | 04-Ago-09 | 8 DIAS    |           |           |   | Mantenimiento de 7,500 Hrs.                                      |
|             | MOTOR 6                 | 01-Sep-09  | 10-Sep-09 | 10 DIAS      | 01-Oct-09 | 10-Oct-09 | 10 DIAS   |           |           |   | Mantenimiento de 15,000 Hrs.                                     |
|             | MOTOR 7                 | 21-Sep-09  | 30-Sep-09 | 10 DIAS      | 13-Oct-09 | 22-Oct-09 | 10 DIAS   |           |           |   | Mantenimiento de 15,000 Hrs.                                     |
| MOTOR 3     | 12-Oct-09               | 19-Oct-09  | 8 DIAS    | 03-Nov-09    | 09-Nov-09 | 7 DIAS    |           |           |           | Mantenimiento de 7,500 Hrs.                                 |  |



Km. 12 1/2 Carretera al Puerto de la Libertad, Nuevo Cuscatlán,  
Departamento de La Libertad.  
Tel.: (503) 2247-7300 Fax: (503) 2247-7301  
Correo: [mercado@ut.com.sv](mailto:mercado@ut.com.sv)  
[www.ut.com.sv](http://www.ut.com.sv)