

Boletín Estadístico

2013

Enero – Diciembre
EUGLO – DICIGWDLG



Gerencia Conciliación de Transacciones
Unidad de Transacciones, S.A. de C.V.
Administradora del Mercado Mayorista de Electricidad



CONTENIDO

	Pág.
I- Tasa de crecimiento de la demanda de energía	1
II- Inyección neta por planta	2
III- Inyecciones por recurso y por operador	3
IV- Transacciones Internacionales	4
V- Demanda de energía en el Mercado de Contratos	5-6
VI- Demanda de energía en el Mercado Regulador del Sistema	7
VII- Demanda total de energía en el Mercado Mayorista	8
VIII- Evolución de los precios en el MRS	9
IX- Comercializadores	10-11
X- Energía no servida y Pérdidas de transmisión	12
XI- Retiro de energía por nodo en la red de transmisión	13-15
XII- Interrupciones de servicio	16
XIII- Límites de voltaje	17
XIV- Programa de mantenimientos mayores	18
XV- Demanda Máxima Coincidental por Recurso	19
XVI- Curvas típicas de carga	20
Día Laboral	20
Día Sábado	21
Día Domingo	22
Estación seca	23
Estación lluviosa	24
XVII- Déficit de Reserva de Potencia	25
XVIII- Cargos del Sistema	26
XIX- Monto de Servicios Auxiliares	27
Control Automático de Generación	27



I- Tasa de crecimiento de la demanda de energía (%)

Cuadro No.1
(Promedio Móvil 12 M)

Mes/Año	2002	2003	2004	2005	2006	2007	2008	2009	2010	2011	2012	2013
Enero	-0.6	7.3	3.5	3.3	5.7	8.6	2.9	4.1	-0.1	3.1	1.9	2.4
Febrero	0.2	7.3	3.5	3.1	6.3	8.2	3.4	3.3	0.3	2.9	2.1	1.8
Marzo	1.0	8.0	3.0	3.0	7.0	7.5	3.2	3.8	0.2	2.6	2.1	1.4
Abril	2.0	7.2	2.7	3.9	6.4	7.4	3.8	2.7	1.0	2.0	2.1	2.5
Mayo	2.9	6.8	2.4	4.2	6.9	6.7	3.8	2.0	1.9	1.8	1.7	2.8
Junio	3.5	6.7	2.5	4.4	7.0	6.4	3.8	1.7	2.1	2.0	1.5	2.8
Julio	4.5	6.1	2.4	4.9	7.2	5.9	3.7	1.3	2.2	2.1	1.5	2.8
Agosto	5.3	5.4	2.9	4.9	7.5	5.2	4.0	0.9	2.5	2.2	1.5	2.7
Septiembre	6.1	4.9	2.9	5.2	7.7	4.7	4.3	0.4	2.7	2.2	1.6	2.5
Octubre	6.6	4.5	2.9	5.1	8.8	3.6	4.4	0.4	2.6	1.7	2.5	1.9
Noviembre	7.4	4.3	2.8	5.1	9.1	3.3	4.0	0.5	2.8	1.6	2.5	2.0
Diciembre	7.9	3.7	3.3	5.1	9.2	3.0	4.1	0.4	2.5	2.1	2.2	2.0

Gráfico No. 1

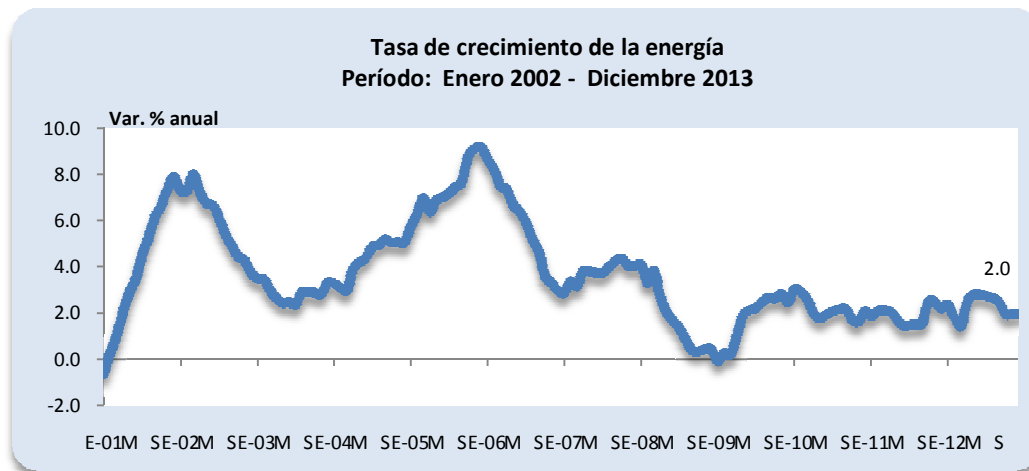
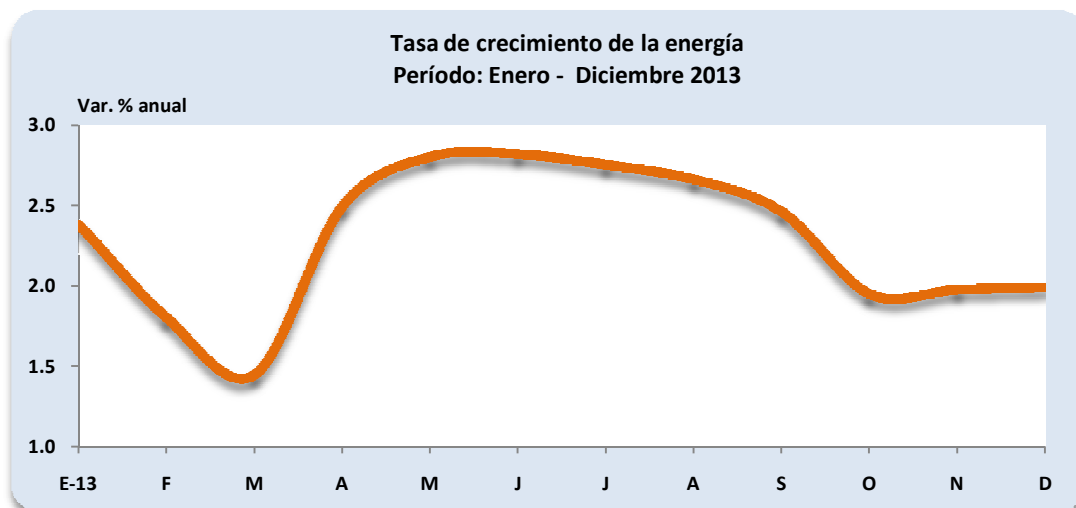


Gráfico No. 2





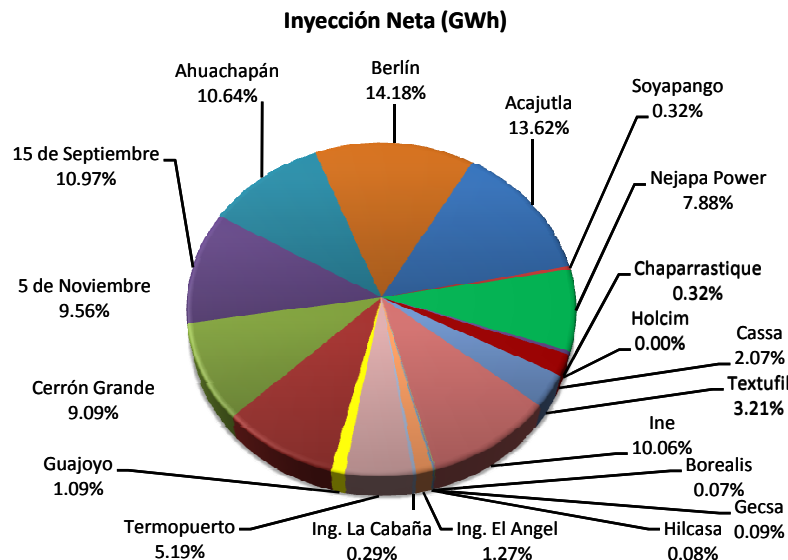
II- Inyección por planta (GWh)

Cuadro No. 2

Generadores	Ene.	Feb.	Mar.	Abr.	May.	Jun.	Jul.	Ago.	Sep.	Oct.	Nov.	Dic.	Total
Hidroeléctrica	111.8	106.6	102.6	125.9	113.3	124.3	158.2	159.0	222.2	249.0	185.5	126.5	1,784.9
Guajoyo	6.7	6.5	8.0	3.6	6.3	5.3	1.8	0.8	0.8	4.2	11.3	8.0	63.2
Cerrón Grande	40.1	38.4	36.4	43.3	32.6	28.3	38.0	44.3	45.6	76.6	61.0	43.7	528.4
5 de Noviembre	38.9	38.3	36.7	48.7	39.9	43.7	53.2	52.8	53.1	54.5	53.0	43.1	555.9
15 de Septiembre	26.1	23.4	21.5	30.4	34.6	47.1	65.2	60.9	122.7	113.7	60.1	31.7	637.4
Geotérmicas	127.3	116.1	126.2	121.5	125.1	113.7	124.2	112.8	123.3	107.8	120.2	124.3	1,442.4
Ahuachapán	56.0	49.7	55.7	53.0	54.3	44.7	53.3	40.9	52.3	54.0	52.0	52.5	618.3
Berlín	71.2	66.4	70.5	68.5	70.8	69.0	70.9	71.9	71.1	53.8	68.2	71.8	824.0
Térmicas	262.9	252.0	277.0	281.6	291.5	255.0	213.5	213.6	101.5	113.0	141.5	181.6	2,584.7
Acajutla	84.6	75.9	83.1	78.7	79.9	72.4	68.5	75.4	37.8	37.6	42.1	55.8	791.8
Soyapango	1.6	2.6	2.4	2.4	3.0	1.8	1.6	0.4	1.0	0.9	0.9	0.1	18.7
Nejapa Power	55.2	59.2	59.8	67.2	62.4	44.1	49.0	38.3	1.9	6.8	4.9	8.9	457.7
Chaparrastique	4.0	3.8	3.6	4.0	0.0					0.0	1.0	2.4	18.7
Holcim													0.0
Cassa	20.5	18.0	19.6	17.9	13.4	11.6	1.8				3.76	13.4	120.1
Textufil	20.1	18.9	19.0	24.9	22.8	18.8	21.5	20.0	4.5	4.4	5.6	6.3	186.8
Ine	58.6	55.7	60.4	56.3	63.2	57.2	55.4	48.3	24.1	27.7	39.0	38.9	584.9
Borealis	0.1	0.0	0.4	0.8	1.7	0.3	0.5	0.0			0.0	0.0	3.9
Gecsa	0.2	0.3	0.7	0.8	1.4	0.6	0.9	0.0	0.0	0.0	0.0	0.1	5.0
Hilcasa	0.1	0.3	0.6	0.7	1.2	0.5	1.0	0.1	0.2	0.0	0.0	0.0	4.8
Ing. El Angel	15.7	15.3	18.2	12.6						0.0	2.0	9.7	73.6
Ing. La Cabaña	2.1	1.9	2.0	2.1	4.4	0.3				0.0	1.5	2.7	17.1
Termopuerto			7.2	13.1	37.9	47.5	13.3	31.1	31.9	35.7	40.7	43.4	301.7
Total	502.0	474.7	505.8	529.0	529.9	493.0	495.9	485.3	447.0	469.8	447.2	432.4	5,812.0

^{1/} Inyecciones provenientes de la red de distribución

Gráfico No. 3



III- Inyecciones por recurso y por operador

Cuadro No. 3

Inyecciones por Recurso (GWh)

Recurso	Ene.	Feb.	Mar.	Abr.	May.	Jun.	Jul.	Ago.	Sep.	Oct.	Nov.	Dic.	Total
Hidroeléctrico	111.8	106.6	102.6	125.9	113.3	124.3	158.2	159.0	222.2	249.0	185.5	126.5	1,784.9
Geotérmico	127.3	116.1	126.2	121.5	125.1	113.7	124.2	112.8	123.3	107.8	120.2	124.3	1,442.4
Térmico	262.9	252.0	277.0	281.6	291.5	255.0	213.5	213.6	101.5	113.0	141.5	181.6	2,584.7
Importaciones	13.4	28.7	11.0	12.5	16.3	7.3	29.1	23.3	51.3	58.1	55.9	66.9	373.9
Total	515.4	503.4	516.9	541.4	546.2	500.3	525.0	508.6	498.3	528.0	503.1	499.3	6,185.9

Cuadro No. 4

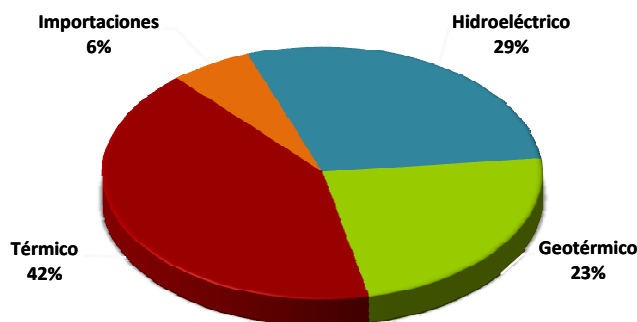
Inyección nacional por Participante de Mercado (GWh)

Participante de Mercado	Ene.	Feb.	Mar.	Abr.	May.	Jun.	Jul.	Ago.	Sep.	Oct.	Nov.	Dic.	Total
Cel	111.8	106.6	102.6	125.9	113.3	124.3	158.2	159.0	222.2	249.0	185.5	126.5	1,784.9
Nejapa Power	55.2	59.2	59.8	67.2	62.4	44.1	49.0	38.3	1.9	6.8	4.9	8.9	457.7
Duke Energy	86.2	78.6	85.5	81.1	82.9	74.2	70.0	75.8	38.8	38.5	43.0	55.9	810.4
LaGeo	127.3	116.1	126.2	121.5	125.1	113.7	124.2	112.8	123.3	107.8	120.2	124.3	1,442.4
Holcim													0.0
Cassa	20.5	18.0	19.6	17.9	13.4	11.6	1.8				3.8	13.4	120.1
Textufil	20.1	18.9	19.0	24.9	22.8	18.8	21.5	20.0	4.5	4.4	5.6	6.3	186.8
Ine, S.A.	58.6	55.7	60.4	56.3	63.2	57.2	55.4	48.3	24.1	27.7	39.0	38.9	584.9
Chaparrastique	4.0	3.8	3.6	4.0	0.0					0.0	1.0	2.4	18.7
Borealis	0.1	0.0	0.4	0.8	1.7	0.3	0.5	0.0			0.0	0.0	3.9
Gecsa	0.2	0.3	0.7	0.8	1.4	0.6	0.9	0.0	0.0	0.0	0.0	0.1	5.0
Inmob.Apopa	0.1	0.3	0.6	0.7	1.2	0.5	1.0	0.1	0.2	0.0	0.0	0.0	4.8
Ing. El Angel	15.7	15.3	18.2	12.6						0.0	2.0	9.7	73.6
Ing. La Cabaña	2.1	1.9	2.0	2.1	4.4	0.3				0.0	1.5	2.7	17.1
Edesal 1/													0.0
Termopuerto			7.2	13.1	37.9	47.5	13.3	31.1	31.9	35.7	40.7	43.4	301.7
Total	502.0	474.7	505.8	529.0	529.9	493.0	495.9	485.3	447.0	469.8	447.2	432.4	5,812.0

^{1/} Inyecciones provenientes de la red de distribución

Gráfico No. 4

Inyección por Recurso (GWh)



IV- Transacciones Internacionales

Cuadro No. 5
Importaciones (GWh)

Participante de mercado	Ene	Feb	Mar	Abr	May	Jun	Jul	Ago	Sep	Oct	Nov	Dic	Total
CENER	0.5	1.4	0.1							0.1		0.6	2.7
COMERCIA							0.0	0.03		1.5	2.9	2.6	7.1
DELSUR	0.1	0.0									0.0	0.0	0.1
DUKE (COM)	0.0	1.1	1.0	1.1	2.8			0.1	4.6	5.4	5.7	11.1	32.9
EDECSA			0.2	0.2	0.1	0.0	1.7	2.0	6.6	6.0	5.5	4.6	26.7
CENERGICA	2.4	0.0			0.9	0.1	0.5		0.8	1.7	2.7	1.5	10.5
ELECTRONOVA	0.1			0.0	0.1	0.0	0.2	0.1	0.7	0.5	1.2	2.0	4.9
ENERSICA	0.3	0.8	0.8	0.4	1.8	0.6	2.9	2.8	7.0	4.1	3.1	6.7	31.2
EXCELERGY	1.0	7.7	0.3	0.1	0.0	0.0			0.0	0.1	0.0	0.0	9.2
INE-COM	6.2	5.6	6.3	6.3	6.2	6.0	6.2	6.2	6.0	6.5	5.9	6.3	73.8
LAGEO									0.5	1.1	0.9	1.5	3.9
MERELEC	2.7	11.0	0.7	2.9	0.2	0.1	1.2	2.7	7.4	8.9	8.1	9.6	55.5
ORIGEM	0.1		1.0	1.0	2.4		10.0	6.2	6.4	3.7	0.4	7.8	38.9
POLIWATT			0.1	0.2	1.4	0.6	4.1	1.9	4.5	3.0	3.5	4.7	24.1
SAN DIEGO	0.1	0.9	0.7	0.2	0.4			0.6	4.1	3.5	6.1	2.4	19.0
AESCLESA										6.1		0.0	6.1
TEXTUFIL											5.9	5.4	11.3
UT1/2/						0.0	2.3	0.7	3.0	6.0	4.1	0.0	16.0
Total	13.4	28.7	11.0	12.5	16.3	7.3	29.1	23.3	51.3	58.1	55.9	66.9	373.9

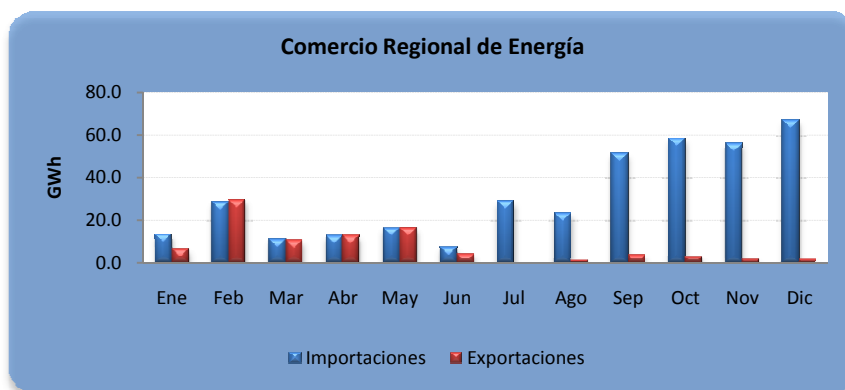
1/ Compras realizadas por disposición transitoria Acuerdo 494-E-2013

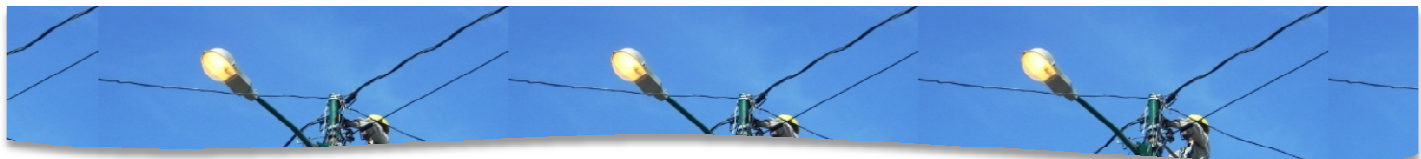
2/ En Junio las compras de la UT fueron de 40.493 MWh; 0.04 GWh

Cuadro No. 6
Exportaciones (GWh)

Participante de mercado	Ene	Feb	Mar	Abr	May	Jun	Jul	Ago	Sep	Oct	Nov	Dic	Total
CENER	0.2			0.0	0.2	0.1				0.0			0.5
DUKE (COM)					0.1								0.1
EDECSA					0.8	0.2	0.0		0.5	0.1	0.8	0.1	2.5
CENERGICA	3.1	3.1	4.2	4.6	5.6	4.0		0.7				0.1	25.4
EXCELERGY	2.0	10.1	3.3	5.9	5.8	0.0	0.0	0.3	3.3	1.9	0.6	0.1	33.1
MERELEC	1.4	16.4	2.8	2.0	3.9	0.0	0.1		0.2	0.7		0.2	27.8
NEPO						0.0							0.1
COMERCIA									0.1	0.2	0.1	0.1	0.5
ORIGEM												0.7	0.7
ENERSICA												0.0	0.0
Total	6.6	29.6	10.4	12.5	16.4	4.3	0.1	1.0	4.1	2.9	1.5	1.4	90.7

Gráfico No. 5





V- Demanda de energía en el Mercado de Contratos (Bilaterales)

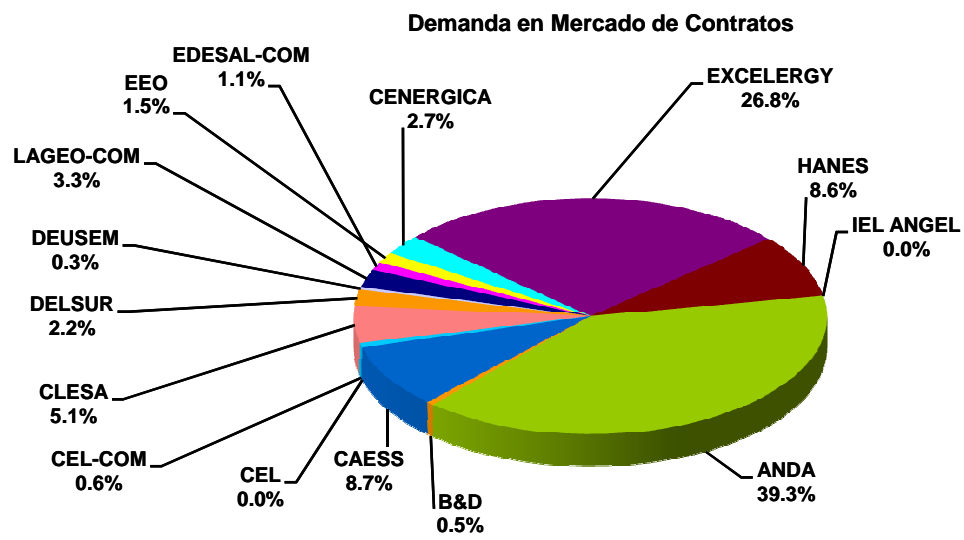
Cuadro No. 7

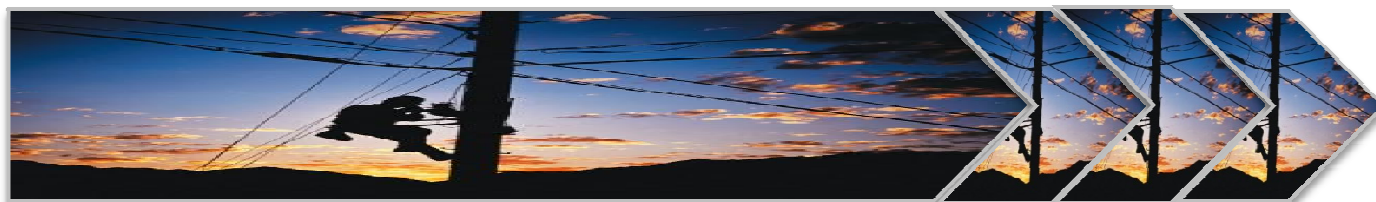
Contratos (GWh)

Participante de Mercado	Ene.	Feb.	Mar.	Abr.	May.	Jun.	Jul.	Ago.	Sep.	Oct.	Nov.	Dic.	Total
ANDA	28.2	25.5	28.2	27.3	28.2	27.3	28.2	28.2	27.3	28.2	27.3	28.2	332.2
B&D	0.4	0.3	0.4	0.4	0.4	0.4	0.4	0.4	0.4	0.4	0.4	0.3	4.3
CAESS	13.8	13.9	4.2	4.1	4.2	4.1	4.2	4.2	4.1	5.3	5.5	5.7	73.4
CEL													0.0
CEL-COM	0.4	0.4	0.4	0.4	0.4	0.4	0.4	0.4	0.4	0.4	0.4	0.4	5.1
CLESA	7.5	6.8	7.5	7.3	5.2	3.2	0.9	0.9	0.9	0.9	0.9	0.9	42.8
DELSUR	1.3	1.5	1.6	1.6	1.6	1.6	1.6	1.6	1.6	1.6	1.6	1.6	18.8
DEUSEM	0.2	0.2	0.2	0.2	0.2	0.2	0.2	0.2	0.2	0.2	0.2	0.2	2.9
EDESAL-DIS	3.4	2.9	1.9	1.3	1.4	1.3	1.4	1.4	1.4	1.4	1.4	1.4	20.7
EDESAL-COM	0.9	0.8	0.3	0.8	0.9	0.8	0.8	0.8	0.8	0.8	0.8	0.8	9.3
EEO	2.0	0.9	1.0	0.9	1.0	0.9	1.0	1.0	0.9	1.0	0.9	1.0	12.6
CENERGICA	3.8	2.4	4.4	3.7	8.7	0.3							23.2
EXCELERGY	12.8	10.7	25.8	25.4	23.4	18.9	18.6	18.6	18.0	18.1	18.0	18.6	226.9
HANES	5.8	6.0	6.4	6.4	6.6	6.6	6.7	6.6	5.7	6.8	5.8	3.5	73.0
IEL ANGEL													0.0
LAGEO													0.0
NEPO													0.0
Total	80.6	72.2	82.4	79.9	82.1	66.1	64.6	64.4	61.7	65.2	63.2	62.7	845.1

1/ CX: Contratos de Exportación

Gráfico No. 6





V- Demanda de energía en el Mercado de Contratos (Libre Concurrencia)

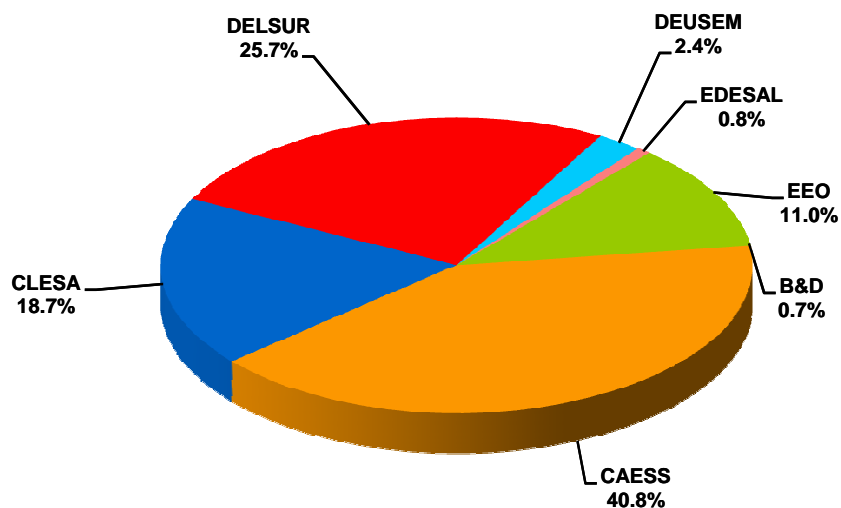
Cuadro No. 8

Contratos (GWh)

Participante de Mercado	Ene.	Feb.	Mar.	Abr.	May.	Jun.	Jul.	Ago.	Sep.	Oct.	Nov.	Dic.	Total
B&D	2.3	2.2	2.1	1.8	2.4	2.2	2.4	2.1	2.3	2.5	2.4	1.8	26.4
CAESS	125.3	119.9	127.0	129.7	132.9	124.7	130.2	131.0	129.6	134.2	138.3	137.4	1,560.2
CLESA	58.6	55.5	60.3	60.3	60.5	55.7	57.3	60.2	59.0	61.8	61.7	62.3	713.3
DELSUR	79.9	76.8	81.2	81.0	79.0	74.2	78.9	81.6	81.7	83.8	92.2	91.8	982.1
DEUSEM	7.8	7.5	8.1	8.0	8.1	7.5	7.9	7.8	7.4	7.6	7.6	7.5	92.8
EDESAL	1.9	1.7	1.6	1.7	2.3	2.2	2.0	2.8	3.3	3.4	3.6	2.9	29.5
EEO	34.7	33.1	36.8	37.0	36.3	33.6	34.8	33.8	32.5	33.3	35.9	37.3	419.1
Total	310.5	296.6	317.1	319.6	321.6	300.1	313.4	319.3	315.8	326.7	341.8	341.0	3,823.4

Gráfico No. 7

Demanda en Mercado de Contratos





VI- Demanda de energía en el Mercado Regulator del Sistema

Cuadro No. 9

MRS (GWh)

Participante de Mercado	Ene.	Feb.	Mar.	Abr.	May.	Jun.	Jul.	Ago.	Sep.	Oct.	Nov.	Dic.	Total
ABRUZZO-COM	0.0	0.0	0.0	0.0	0.0	0.0	0.0	0.0	0.0	0.0	0.0	0.0	0.0
ANDA	-1.4	-2.1	-1.6	-1.8	-3.1	-3.5	-3.0	-3.9	-4.4	-4.4	-3.1	-2.7	-35.1
B&D	0.0	0.0	0.0	0.5	-0.2	-0.1	0.0	0.0	-0.1	-0.1	0.0	0.3	0.3
BOREALIS	0.0	0.0	0.0	0.0	0.0	0.0	0.0	0.0	0.0	0.0	0.0	0.0	0.3
CAESS	53.8	45.7	44.9	55.5	51.6	48.0	52.4	43.3	37.0	41.3	28.2	27.7	529.4
CASSA	0.0	0.0	0.0	0.1	0.0	0.0	0.4	0.4	0.4	0.5	0.4	0.0	2.3
CEL	0.3	0.3	0.3	0.3	0.3	0.3	0.2	0.2	0.1	0.1	0.2	0.4	3.1
CEL-COM	0.0	0.0	0.0	0.0	0.0	0.0	0.0	0.0	0.0	0.0	0.0	0.0	0.0
CENER													0.0
HOLCIM	1.4	1.8	1.9	1.7	1.1	0.8	2.0	3.2	5.4	3.9	2.2	1.4	26.8
CHAP	0.0	0.0	0.1	0.0	0.1	0.1	0.1	0.1	0.2	0.2	0.2	0.0	1.2
CLESA	8.8	7.8	7.5	10.2	11.8	13.4	18.0	12.9	11.4	13.1	10.1	10.5	135.5
DELSUR	45.4	40.4	46.1	50.8	54.9	51.0	52.6	43.9	41.6	48.1	34.6	32.9	542.3
DEUSEM	3.4	2.8	2.8	3.6	3.6	3.4	3.2	3.5	3.0	3.4	3.1	3.7	39.7
DUKE	0.3	0.3	0.3	0.3	0.3	0.3	0.3	0.3	0.4	0.5	0.4	0.3	4.0
DUKE (COM)													0.0
EDECSA													0.0
EDESAL-DIS	-0.9	0.0	0.4	0.1	-0.4	0.4	3.1	1.8	1.0	1.1	0.8	0.5	8.0
EDESAL-COM	0.0	0.0	0.6	0.0	0.0	0.0	0.0	0.0	0.0	0.0	0.0	0.0	0.5
EEO	12.8	11.8	13.1	14.9	14.2	13.7	14.9	15.0	13.0	15.0	10.2	10.7	159.1
CENERGICA													0.0
EXCELERGY	0.0	0.0	0.0	0.0	-0.1	-0.1	0.0	-0.1	-0.1	0.0	0.0	-0.2	-0.6
GECSA	0.0	0.0	0.0	0.0	0.0	0.0	0.0	0.0	0.0	0.0	0.0	0.0	0.4
HANES	-0.4	-0.4	-0.5	-0.4	-0.3	-0.6	-0.4	-0.5	-0.5	-0.4	-0.4	-0.5	-5.2
HILCASA	0.0	0.0	0.0	0.0	0.0	0.0	0.0	0.0	0.0	0.0	0.0	0.0	0.3
IEL ANGEL	0.0	0.0	0.0	0.1	0.2	0.2	0.2	0.2	0.2	0.3	0.2	0.0	1.6
INE	0.0	0.0	0.0	0.0	0.0	0.0	0.0	0.0	0.2	0.2	0.1	0.1	0.5
LAGEO	0.9	0.7	1.1	0.9	0.9	0.8	1.0	1.0	0.9	1.1	1.0	1.0	11.3
MERELEC	0.0	0.0	0.0	0.0	0.0	0.0	0.0	0.0	0.0	0.0	0.0	0.0	0.0
NEPO	0.0		0.0					0.2	0.6		0.0	0.0	0.8
TEXT	0.6	0.5	0.7	0.8	0.8	0.7	0.7	0.7	0.3	0.3	0.3	0.3	6.7
TPTO		0.0	0.1	0.1	0.0	0.0	0.0	0.0	0.0	0.0	0.0	0.0	0.3
Total	125.3	109.7	118.0	137.8	135.8	129.0	145.9	122.2	110.7	124.1	88.6	86.5	1,433.5

Los valores negativos corresponden a las desviaciones de contratos que fueron inyectadas al MRS, superando el valor total de sus retiros.



VII- Demanda total de energía en el Mercado Mayorista

Cuadro No. 10

Demanda Total de Energía (Contratos + MRS) GWh

Participante de Mercado	Ene.	Feb.	Mar.	Abr.	May.	Jun.	Jul.	Ago.	Sep.	Oct.	Nov.	Dic.	Total
ABRUZZO-COM	0.0	0.0	0.0	0.0	0.0	0.0	0.0	0.0	0.0	0.0	0.0	0.0	0.0
ANDA	26.8	23.3	26.6	25.5	25.1	23.8	25.2	24.3	22.9	23.8	24.2	25.5	297.0
B&D	2.7	2.5	2.5	2.7	2.6	2.5	2.7	2.5	2.6	2.7	2.7	2.3	30.9
BOREALIS	0.0	0.0	0.0	0.0	0.0	0.0	0.0	0.0	0.0	0.0	0.0	0.0	0.3
CAESS	192.9	179.5	176.1	189.3	188.7	176.8	186.8	178.5	170.7	180.8	172.1	170.8	2,163.1
CASSA	0.0	0.0	0.0	0.1	0.0	0.0	0.4	0.4	0.4	0.5	0.4	0.0	2.3
CEL	0.3	0.3	0.3	0.3	0.3	0.3	0.2	0.2	0.1	0.1	0.2	0.4	3.1
CEL-COM	0.4	0.4	0.4	0.4	0.4	0.4	0.4	0.4	0.4	0.4	0.4	0.4	5.1
CENER	0.0	0.0	0.0	0.0	0.0	0.0	0.0	0.0	0.0	0.0	0.0	0.0	0.0
HOLCIM	1.4	1.8	1.9	1.7	1.1	0.8	2.0	3.2	5.4	3.9	2.2	1.4	26.8
CHAP	0.0	0.0	0.1	0.0	0.1	0.1	0.1	0.1	0.2	0.2	0.2	0.0	1.2
CLESA	74.8	70.0	75.3	77.8	77.5	72.3	76.3	74.0	71.3	75.8	72.7	73.8	891.6
DELSUR	126.6	118.7	128.9	133.4	135.5	126.7	133.1	127.1	124.8	133.5	128.4	126.4	1,543.3
DEUSEM	11.5	10.5	11.2	11.9	11.9	11.1	11.4	11.5	10.7	11.3	11.0	11.4	135.4
DUKE	0.3	0.3	0.3	0.3	0.3	0.3	0.3	0.3	0.4	0.5	0.4	0.3	4.0
DUKE (COM)	0.0	0.0	0.0	0.0	0.0	0.0	0.0	0.0	0.0	0.0	0.0	0.0	0.0
EDECSA	0.0	0.0	0.0	0.0	0.0	0.0	0.0	0.0	0.0	0.0	0.0	0.0	0.0
EDESAL-DIS	4.5	4.6	4.0	3.1	3.3	3.9	6.5	6.1	5.7	5.9	5.7	4.8	58.1
EDESAL-COM	0.9	0.8	0.9	0.8	0.9	0.8	0.8	0.8	0.8	0.8	0.8	0.8	9.9
EEO	49.5	45.7	50.8	52.8	51.5	48.2	50.7	49.7	46.4	49.3	47.1	49.0	590.8
CENERGICA	3.8	2.4	4.4	3.7	8.7	0.3	0.0	0.6	0.0	0.0	0.0	0.0	23.8
EXCELERGY	12.8	10.7	25.8	25.4	23.3	18.9	18.6	18.5	17.9	18.1	18.0	18.4	226.3
GECSA	0.0	0.0	0.0	0.0	0.0	0.0	0.0	0.0	0.0	0.0	0.0	0.0	0.4
HANES	5.5	5.6	6.0	6.0	6.3	6.1	6.3	6.1	5.2	6.4	5.3	3.0	67.8
HILCASA	0.0	0.0	0.0	0.0	0.0	0.0	0.0	0.0	0.0	0.0	0.0	0.0	0.3
IEL ANGEL	0.0	0.0	0.0	0.1	0.2	0.2	0.2	0.2	0.2	0.3	0.2	0.0	1.6
INE	0.0	0.0	0.0	0.0	0.0	0.0	0.0	0.0	0.2	0.2	0.1	0.1	0.5
LAGEO	0.9	0.7	1.1	0.9	0.9	0.8	1.0	1.0	0.9	1.1	1.0	1.0	11.3
MERELEC	0.0	0.0	0.0	0.0	0.0	0.0	0.0	0.0	0.0	0.0	0.0	0.0	0.0
NEPO	0.0	0.0	0.0	0.0	0.0	0.0	0.0	0.2	0.6	0.0	0.0	0.0	0.8
TEXT	0.6	0.5	0.7	0.8	0.8	0.7	0.7	0.7	0.3	0.3	0.3	0.3	6.7
TPTO	0.0	0.0	0.1	0.1	0.0	0.0	0.0	0.0	0.0	0.0	0.0	0.0	0.3
CX1/	-13.7	-10.8	-17.5	-15.5	-18.0	-6.7	-6.4	-6.8	-3.3	-0.9	-1.2	-1.4	-102.4
Total	502.7	467.8	499.9	521.7	521.5	488.4	517.4	499.7	484.8	515.1	492.3	488.8	6,000.2



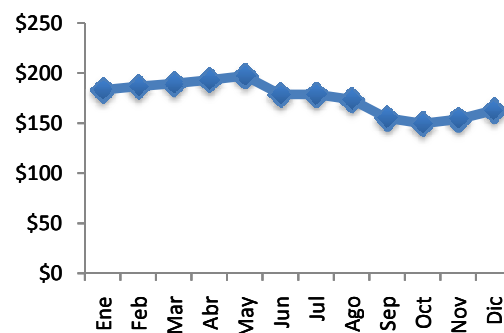
VIII- Evolución de los precios en el MRS

Cuadro No. 11

Mes	Promedio	Variaciones %			
		Mensual	Anual	Acumulada	Prom. Anual
Ene	183.24	3.82	1.01	3.82	191.7
Feb	186.78	1.93	-5.67	5.83	190.8
Mar	189.41	1.41	-10.79	7.32	188.9
Abr	193.04	1.92	-6.52	9.37	187.8
May	197.13	2.12	-3.77	11.69	187.1
Jun	178.71	-9.34	-5.05	1.25	186.3
Jul	178.59	-0.07	-18.34	1.18	183.0
Ago	173.60	-2.79	-3.14	-1.64	182.5
Sep	155.09	-10.67	-11.85	-12.13	180.8
Oct	149.77	-3.42	-14.90	-15.14	178.6
Nov	154.01	2.83	-15.07	-12.74	176.3
Dic	162.77	5.68	-7.78	-7.78	175.2

Gráfico No. 8

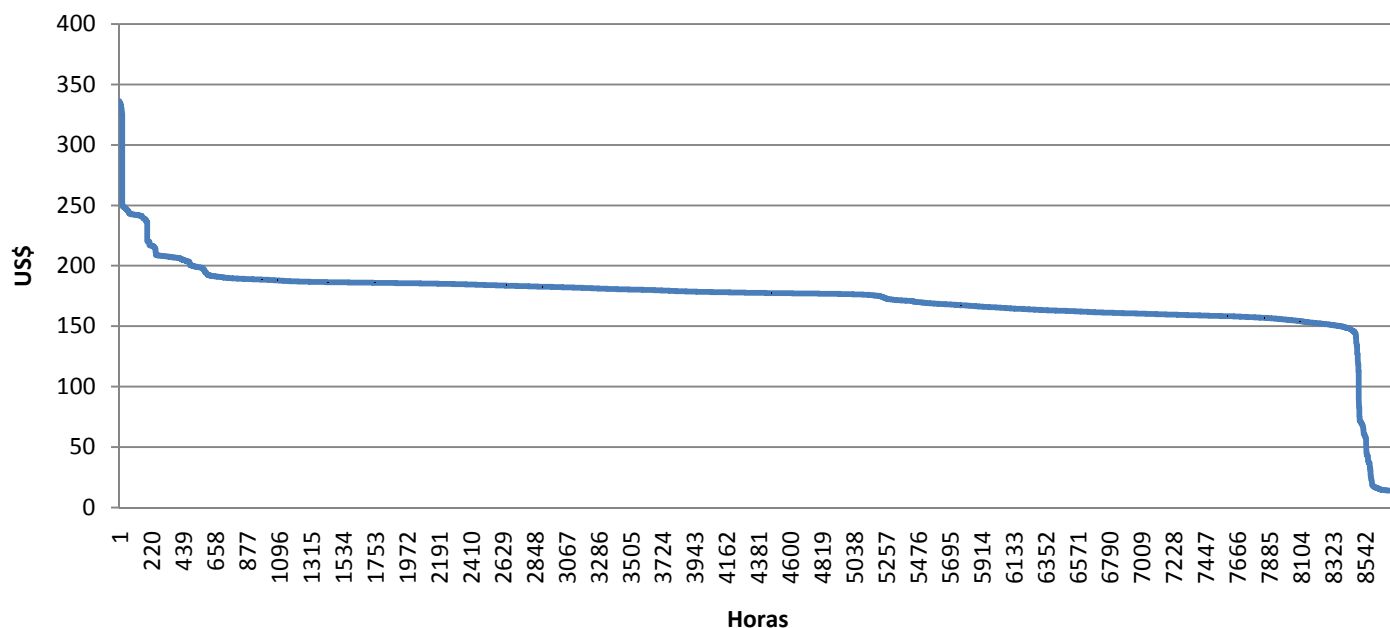
Precios Promedios Mensuales



Nota: a partir del 1 de Agosto de 2011 el precio de la energía ha sido calculado con base a lo establecido en el Reglamento de Operación Basado en Costos de Producción (ROBCP)

Gráfico No. 9

Curva de Duración de Precios MRS Período: Enero - Diciembre 2013



IX- Comercializadores

Cuadro No. 12

Participante de Mercado	Inyecciones (GWh)												Total
	Ene	Feb	Mar	Abr	May	Jun	Jul	Ago	Sep	Oct	Nov	Dic	
BOREALIS	0.1	0.0	0.4	0.8	1.7	0.3	0.5	0.0	0.0	0.0	0.0	0.0	3.9
CENER	0.5	1.4	0.1	0.0	0.0	0.0	0.0	0.0	0.0	0.1	0.0	0.6	2.7
CHAP	4.0	3.8	3.6	4.0	0.0	0.0	0.0	0.0	0.0	0.0	1.0	2.4	18.7
DUKE (COM)	0.0	1.1	1.0	1.1	2.8	0.0	0.0	0.1	4.6	5.4	5.7	11.1	32.9
EDECSA	0.0	0.0	0.2	0.2	0.1	0.0	1.7	2.0	6.6	6.0	5.5	4.6	26.7
CENERGICA	2.4	0.0	0.0	0.0	0.9	0.1	0.5	0.0	0.8	1.7	2.7	1.5	10.5
ELECTRONOVA	0.1	0.0	0.0	0.0	0.1	0.0	0.2	0.1	0.7	0.5	1.2	2.0	4.9
Enersica, S. A. de C.V.	0.3	0.8	0.8	0.4	1.8	0.6	2.9	2.8	7.0	4.1	3.1	6.7	31.2
Excelergy S.A.	1.0	7.7	0.3	0.1	0.0	0.0	0.0	0.0	0.0	0.1	0.0	0.0	9.2
GECSA	0.2	0.3	0.7	0.8	1.4	0.6	0.9	0.0	0.0	0.0	0.0	0.1	5.0
HILCASA	0.1	0.3	0.6	0.7	1.2	0.5	1.0	0.1	0.2	0.0	0.0	0.0	4.8
INE S.A. DE C.V. (COM)	6.2	5.6	6.3	6.3	6.2	6.0	6.2	6.2	6.0	6.5	5.9	6.3	73.8
LA CABAÑA	2.1	1.9	2.0	2.1	4.4	0.3	0.0	0.0	0.0	0.0	1.5	2.7	17.1
MERELEC	2.7	11.0	0.7	2.9	0.2	0.1	1.2	2.7	7.4	8.9	8.1	9.6	55.5
ORIGEM S.A. de C.V.	0.1	0.0	1.0	1.0	2.4	0.0	10.0	6.2	6.4	3.7	0.4	7.8	38.9
Poliwatt El Salvador S.A.	0.0	0.0	0.1	0.2	1.4	0.6	4.1	1.9	4.5	3.0	3.5	4.7	24.1
SAN DIEGO	0.1	0.9	0.7	0.2	0.4	0.0	0.0	0.6	4.1	3.5	6.1	2.4	19.0
TEXT	20.1	18.9	19.0	24.9	22.8	18.8	21.5	20.0	4.5	4.4	11.5	11.7	198.0
COMERCIA	0.0	0.0	0.0	0.0	0.0	0.0	0.01	0.03	0.0	1.5	2.9	2.6	7.07
Total	40.0	53.9	37.3	45.8	48.0	27.8	50.6	42.7	52.6	49.4	59.1	76.8	584.0



IX- Comercializadores

Cuadro No. 13

Participante de Mercado	Retiros (GWh)												Total	
	Ene	Feb	Mar	Abr	May	Jun	Jul	Ago	Sep	Oct	Nov	Dic		
ABRUZZO S.A. DE C.V.	0.0	0.0	0.0	0.0	0.0	0.0	0.0	0.0	0.0	0.0	0.0	0.0	0.0	0.0
BOREALIS	0.0	0.0	0.0	0.0	0.0	0.0	0.0	0.0	0.0	0.0	0.0	0.0	0.0	0.3
CEL - Comercializadora	0.4	0.4	0.4	0.4	0.4	0.4	0.4	0.4	0.4	0.4	0.4	0.4	0.4	5.1
CENER	0.2	0.0	0.0	0.0	0.2	0.1	0.0	0.0	0.0	0.0	0.0	0.0	0.0	0.5
CHAP	0.0	0.0	0.1	0.0	0.1	0.1	0.1	0.1	0.1	0.2	0.2	0.2	0.0	1.2
DUKE (COM)	0.0	0.0	0.0	0.0	0.1	0.0	0.0	0.0	0.0	0.0	0.0	0.0	0.0	0.1
EDECSA	0.0	0.0	0.0	0.0	0.8	0.2	0.0	0.0	0.5	0.1	0.8	0.1	0.1	2.5
EDESAL S.A. de C.V. (COM)	0.9	0.8	0.9	0.8	0.9	0.8	0.8	0.8	0.8	0.8	0.8	0.8	0.8	9.9
CENERGICA	3.1	3.1	4.2	4.6	5.6	4.0	0.0	0.7	0.0	0.0	0.0	0.1	0.1	25.4
Excelergy S.A.	4.8	12.3	15.9	19.4	19.7	12.4	12.2	12.6	17.8	19.1	17.4	17.1	17.1	180.8
GECSA	0.0	0.0	0.0	0.0	0.0	0.0	0.0	0.0	0.0	0.0	0.0	0.0	0.0	0.4
HILCASA	0.0	0.0	0.0	0.0	0.0	0.0	0.0	0.0	0.0	0.0	0.0	0.0	0.0	0.3
MERELEC	1.4	16.4	2.8	2.0	3.9	0.1	0.1	0.0	0.2	0.7	0.0	0.2	0.2	27.8
TEXT	0.6	0.5	0.7	0.8	0.8	0.7	0.7	0.7	0.3	0.3	0.3	0.3	0.3	6.7
COMERCIA	0.0	0.0	0.0	0.0	0.0	0.0	0.0	0.0	0.1	0.2	0.1	0.1	0.1	0.5
ORIGEM	0.0	0.0	0.0	0.0	0.0	0.0	0.0	0.0	0.0	0.0	0.0	0.7	0.7	0.7
ENERSICA	0.0	0.0	0.0	0.0	0.0	0.0	0.0	0.0	0.0	0.0	0.0	0.0	0.0	0.0
Total	11.4	33.7	25.2	28.2	32.6	18.8	14.5	15.4	20.3	22.0	20.0	20.0	20.0	262.1

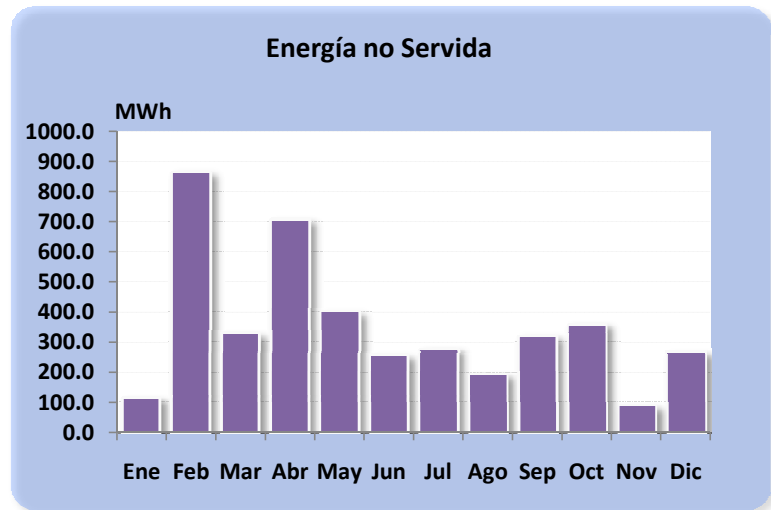


X- Energía no servida y Pérdidas de transmisión

Cuadro No. 14

Gráfico No. 10

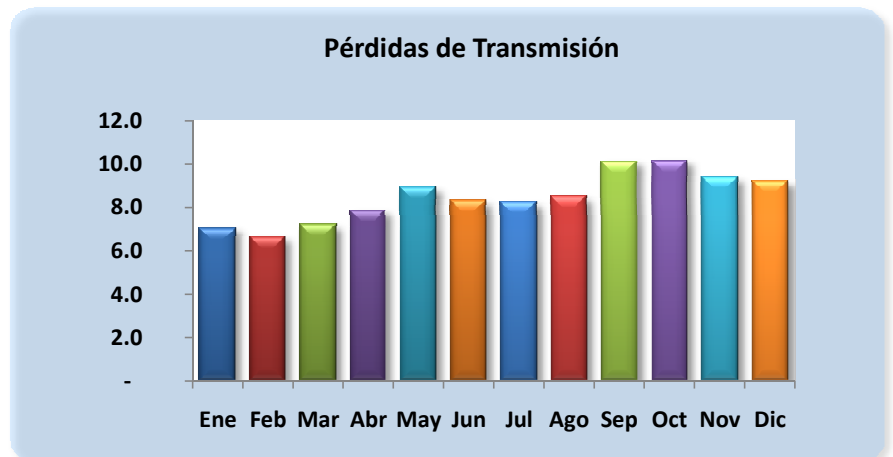
Energía no Servida		
Mes	MWh	% Var. Mensual
Ene	116.8	0.0%
Feb	865.4	640.8%
Mar	330.8	-61.8%
Abr	709.2	114.4%
May	402.4	-43.3%
Jun	257.8	-35.9%
Jul	278.8	8.1%
Ago	194.5	-30.2%
Sep	321.8	65.4%
Oct	361.9	12.5%
Nov	91.6	-74.7%
Dic	267.7	192.3%
Total	4,198.7	



Cuadro No. 15

Gráfico No. 11

Pérdida de Trasmisión		
Mes	GWh	% Var. Mensual
Ene	7.1	0.0%
Feb	6.6	-5.9%
Mar	7.2	8.7%
Abr	7.9	8.9%
May	8.9	13.5%
Jun	8.3	-6.8%
Jul	8.3	-0.9%
Ago	8.5	3.2%
Sep	10.1	18.8%
Oct	10.2	0.4%
Nov	9.4	-7.4%
Dic	9.2	-1.8%





XI- Retiro de energía por nodo en la red de transmisión

Cuadro No. 16

Retiros por nodo (GWh)

Participante de Mercado	Subestaciones	Ene	Feb	Mar	Abr	May	Jun	Jul	Ago	Sep	Oct	Nov	Dic	Total
CAESS	Cerrón Grande	8.9	8.3	8.6	9.2	8.7	8.3	8.6	8.5	7.9	8.4	8.0	8.4	101.9
	Nejapa	33.6	29.6	27.5	28.2	28.1	26.1	26.8	26.2	25.4	25.8	25.2	25.9	328.4
	San Antonio	47.4	43.3	42.7	49.0	49.6	47.8	49.5	43.7	42.5	45.9	43.6	42.6	547.7
	San Bartolo	28.0	27.7	29.3	28.8	29.9	27.9	29.2	27.7	32.6	34.6	31.8	29.7	357.2
	Soyapango	53.8	49.6	45.9	53.3	51.8	47.8	52.0	49.3	40.7	43.3	41.6	41.9	571.0
	San Rafael	9.6	8.7	9.1	9.2	9.4	8.9	9.2	9.1	8.6	9.0	8.5	9.1	108.4
	Santo Tomás	11.5	12.2	13.1	11.7	11.2	10.0	10.0	9.5	8.7	9.3	8.9	8.7	125.0
	Nuevo Cuscatlán ^{3/}								1.5	4.4	4.2	4.5	4.4	4.5
Sub-Total		192.9	179.5	176.1	189.3	188.7	176.8	186.8	178.5	170.7	180.8	172.1	170.8	2,163.1
DELSUR	Ateos	9.1	7.6	7.3	8.7	11.7	10.7	11.1	9.5	11.0	11.0	10.6	10.1	118.4
	Acajutla	0.6	0.4	0.5	0.3	0.8	0.7	0.7	0.8	0.8	0.9	0.8	0.6	7.8
	Borealis	0.0	0.0	0.0	0.0	0.0	0.0	0.0	0.0	0.0	0.0	0.0	0.0	0.0
	Nuevo Cuscatlán	45.7	43.0	44.3	47.4	46.1	39.9	45.7	44.5	44.0	47.2	45.6	45.2	538.5
	Nejapa	0.0	0.7	3.5	3.9	4.0	3.5	3.9	3.7	3.6	3.9	3.6	3.2	37.6
	Opico	16.7	15.7	16.8	17.1	18.1	15.9	17.3	16.6	15.5	18.0	15.9	15.6	199.2
	El Pedregal	14.4	12.9	14.3	15.1	15.0	16.6	16.4	14.9	13.9	14.1	14.1	15.6	177.2
	Santa Ana	1.9	2.2	1.2	0.9	0.6	0.4	0.5	0.5	0.5	0.5	0.4	0.6	10.2
	San Bartolo	0.0	0.0	0.0	0.0	0.0	0.0	0.0	0.0	0.0	0.0	0.0	0.0	0.0
	Soyapango	7.1	7.5	8.5	8.2	6.9	6.6	5.7	5.1	4.7	5.2	6.4	6.7	78.4
	San Rafael	4.7	4.4	4.8	4.6	4.8	4.5	4.6	4.6	4.3	4.7	4.4	4.7	55.1
	Santo Tomás	16.6	15.2	16.5	17.2	17.5	18.2	17.2	17.3	17.1	18.3	15.6	13.8	200.3
	Sicepasa	0.1	0.2	1.6	0.1	0.2	0.1	0.2	0.1	0.1	0.2	1.6	0.2	4.7
	Tecoluca	9.8	8.9	9.8	10.0	9.9	9.5	9.8	9.6	9.3	9.8	9.6	10.0	116.0
Sub-Total		126.6	118.7	128.9	133.4	135.5	126.7	133.1	127.1	124.8	133.5	128.4	126.4	1,543.3
AES CLESA	Acajutla	9.4	8.7	9.2	9.2	9.1	8.2	8.5	8.3	6.7	8.5	8.1	8.8	102.8
	Ahuachapán	8.4	7.4	8.1	8.4	8.1	7.4	7.6	7.5	7.3	7.6	7.6	8.4	93.7
	Ateos	25.2	23.0	24.0	25.2	25.8	24.2	25.6	23.9	23.4	25.0	23.3	21.5	290.0
	Guajoyo	4.1	3.9	4.1	4.4	4.3	4.0	4.1	4.1	3.9	4.1	4.0	4.1	49.1
	Opico	0.1	0.2	0.1	0.1	0.0	0.0	0.0	0.2	0.3	0.3	0.2	0.1	1.7
	Santa Ana	21.6	20.1	21.5	22.2	22.0	20.9	22.3	22.0	20.9	22.0	20.9	21.6	258.0
	Sonsonate	6.0	6.9	8.3	8.4	8.1	7.6	8.0	8.0	8.9	8.3	8.6	9.2	96.3
	Sub-Total		74.8	70.0	75.3	77.8	77.5	72.3	76.3	74.0	71.3	75.8	72.7	73.8
EEO	15 de Septiembre	5.9	5.4	6.3	6.1	6.1	5.7	6.0	5.8	5.8	6.0	5.9	6.3	71.4
	San Miguel	28.5	26.4	29.5	30.7	29.8	28.2	29.8	28.9	26.6	29.2	27.2	31.5	346.5
	La Unión	13.5	12.3	13.4	14.3	13.9	12.9	13.4	13.5	12.7	12.7	12.5	9.6	154.7
	Chaparrastique	1.5	1.5	1.6	1.7	1.7	1.4	1.5	1.5	1.4	1.4	1.5	1.5	18.2
	Sub-Total		49.5	45.7	50.8	52.8	51.5	48.2	50.7	49.7	46.4	49.3	47.1	49.0
DEUSEM	Ozatlán	11.5	10.5	11.2	11.9	11.9	11.1	11.4	11.5	10.7	11.3	11.0	11.4	135.4
	Sub-Total		11.5	10.5	11.2	11.9	11.9	11.1	11.4	11.5	10.7	11.3	11.0	135.4
B&D	San Bartolo	2.7	2.5	2.5	2.7	2.6	2.5	2.7	2.5	2.6	2.7	2.7	2.3	30.9
	Sub-Total		2.7	2.5	2.5	2.7	2.6	2.5	2.7	2.5	2.6	2.7	2.3	30.9
Edesal	Ateos	0.0	0.0	0.0	0.0	0.0	0.0	0.0	0.0	0.0	0.0	0.0	0.0	0.0
	Gecsa	0.0	0.0	0.0	0.0	0.0	0.0	0.0	0.0	0.0	0.0	0.0	0.0	0.0
	El Angel	0.0	0.0	0.0	0.0	0.0	0.0	0.0	0.0	0.0	0.0	0.0	0.0	0.0
	Nejapa	0.9	0.9	0.8	0.6	0.6	0.8	2.2	2.3	2.1	2.1	2.1	2.2	17.7
	Talnique	3.6	3.7	3.2	2.5	2.6	3.1	4.3	3.8	3.5	3.8	3.6	2.6	40.4
	Sub-Total		4.5	4.6	4.0	3.1	3.3	3.9	6.5	6.1	5.7	5.9	5.7	4.8
Excelergy	15 de Septiembre	0.0	0.0	0.0	0.0	0.0	0.0	0.0	0.0	0.0	0.0	0.0	0.0	0.0
	Acajutla	0.0	0.0	0.0	0.0	0.0	0.0	0.0	0.0	0.0	0.0	0.0	0.0	0.0
	Ahuachapán	0.0	0.0	0.0	0.0	0.0	0.0	0.0	0.0	0.0	0.0	0.0	0.0	0.0
	Ateos	0.0	0.0	0.0	0.0	0.0	0.0	0.0	0.0	0.0	0.0	0.0	0.0	0.4
	Cerrón Grande	0.0	0.0	0.4	0.4	0.4	0.4	0.4	0.4	0.5	0.6	0.6	0.6	4.7
	Guajoyo	0.0	0.0	0.0	0.0	0.0	0.0	0.0	0.0	0.0	0.0	0.0	0.0	0.0
	Nuevo Cuscatlán	0.3	0.2	0.3	0.2	0.3	0.2	0.3	0.3	0.3	0.3	0.3	0.3	3.2
	Nejapa	0.0	0.0	1.8	2.0	2.1	1.8	1.7	1.7	2.0	2.3	2.3	2.4	20.1
	Opico	0.0	0.0	0.0	0.0	0.0	0.0	0.0	0.0	0.0	0.0	0.0	0.0	0.0
	Ozatlán	0.0	0.0	0.0	0.0	0.0	0.0	0.0	0.0	0.0	0.0	0.0	0.0	0.0
	El Pedregal	0.0	0.0	0.0	0.0	0.0	0.0	0.0	0.1	0.1	0.1	0.1	0.1	0.5
	Santa Ana	0.0	0.0	0.0	0.0	0.0	0.0	0.0	0.0	0.0	0.0	0.0	0.0	0.1
	San Antonio	1.0	0.9	3.5	3.4	3.5	3.4	3.5	3.6	4.2	4.8	4.6	4.6	41.0
	San Bartolo	0.9	0.7	2.0	2.0	2.0	1.9	2.1	2.2	2.7	3.3	3.2	3.2	26.1
	San Miguel	0.0	0.0	0.0	0.0	0.0	0.0	0.0	0.0	0.0	0.0	0.0	0.0	0.3
	Sonsonate	0.0	0.0	0.0	0.0	0.0	0.0	0.0	0.0	0.0	0.0	0.0	0.0	0.1
	Soyapango	0.3	0.3	3.2	3.1	3.2	3.1	3.2	3.2	3.7	4.3	4.2	4.3	36.3
	San Rafael	0.0	0.0	0.4	0.4	0.4	0.4	0.4	0.4	0.5	0.7	0.7	0.7	5.2
	Santo Tomás	0.2	0.0	0.4	0.4	0.4	0.4	0.4	0.4	0.6	0.8	0.7	0.8	5.5
	Tecoluca	0.0	0.0	0.0	0.0	0.0	0.0	0.0	0.0	0.0	0.0	0.0	0.0	0.1
Talnique	0.0	0.0	0.5	1.4	1.5	0.6	0.0	0.0	0.0	0.0	0.0	0.0	4.0	
Sub-Total		2.9	2.3	12.7	13.6	13.9	12.4	12.2	12.3	14.6	17.2	16.8	17.0	147.7



XI- Retiro de energía por nodo en la red de transmisión

Cuadro No. 16

Participante de Mercado	Subestaciones	Retiros por nodo (GWh)												
		Ene	Feb	Mar	Abr	May	Jun	Jul	Ago	Sep	Oct	Nov	Dic	Total
	Sub-Total	0.3	0.3	0.3	0.3	0.3	0.3	0.3	0.3	0.4	0.5	0.4	0.3	4.0
LaGeo	Ahuachapán	0.9	0.7	0.9	0.9	0.9	0.8	0.9	0.9	0.9	1.0	1.0	1.0	10.8
	Berlín	0.0	0.0	0.2	0.0	0.0	0.0	0.0	0.1	0.0	0.1	0.0	0.0	0.5
	Sub-Total	0.9	0.7	1.1	0.9	0.9	0.8	1.0	1.0	0.9	1.1	1.0	1.0	11.3
Holcim	Ateos	0.0	0.0	0.0	0.0	0.0	0.0	0.0	0.0	0.0	0.0	0.0	0.0	0.0
	Guajoyo	1.4	1.8	1.9	1.7	1.1	0.8	2.0	3.2	5.4	3.9	2.2	1.4	26.8
	Nuevo Cuscatlán	0.0	0.0	0.0	0.0	0.0	0.0	0.0	0.0	0.0	0.0	0.0	0.0	0.0
	Opico	0.0	0.0	0.0	0.0	0.0	0.0	0.0	0.0	0.0	0.0	0.0	0.0	0.0
	El Pedregal	0.0	0.0	0.0	0.0	0.0	0.0	0.0	0.0	0.0	0.0	0.0	0.0	0.0
	Sub-Total	1.4	1.8	1.9	1.7	1.1	0.8	2.0	3.2	5.4	3.9	2.2	1.4	26.8
Cassa	Sonsonate	0.0	0.0	0.0	0.1	0.0	0.0	0.4	0.4	0.4	0.5	0.4	0.0	2.3
	Sub-Total	0.0	0.0	0.0	0.1	0.0	0.0	0.4	0.4	0.4	0.5	0.4	0.0	2.3
INE	Talnique	0.0	0.0	0.0	0.0	0.0	0.0	0.0	0.0	0.2	0.2	0.1	0.1	0.5
	Sub-Total	0.0	0.0	0.0	0.0	0.0	0.0	0.0	0.0	0.2	0.2	0.1	0.1	0.5
El Angel	El angel	0.0	0.0	0.0	0.1	0.2	0.2	0.2	0.2	0.2	0.3	0.2	0.0	1.6
	Sub-Total	0.0	0.0	0.0	0.1	0.2	0.2	0.2	0.2	0.2	0.3	0.2	0.0	1.6
Invinter	Sicepasa	0.0	0.0	0.0	0.0	0.0	0.0	0.0	0.0	0.0	0.0	0.0	0.0	0.0
	Sub-Total	0.0	0.0	0.0	0.0	0.0	0.0	0.0	0.0	0.0	0.0	0.0	0.0	0.0
ANDA	Nejapa	20.2	17.7	20.0	19.1	18.8	17.9	19.1	18.5	17.7	18.1	18.4	19.4	225.0
	Santa Ana	6.6	5.6	6.5	6.3	6.3	5.8	6.1	5.7	5.2	5.6	5.8	6.0	71.7
	San Miguel	0.0	0.0	0.0	0.0	0.0	0.0	0.0	0.0	0.0	0.0	0.0	0.0	0.3
	Sub-Total	26.8	23.3	26.6	25.5	25.1	23.8	25.2	24.3	22.9	23.8	24.2	25.5	297.0
Consorcio	Acajutla	0.0	0.0	0.0	0.0	0.0	0.0	0.0	0.0	0.0	0.0	0.0	0.0	0.0
	Sub-Total	0.0	0.0	0.0	0.0	0.0	0.0	0.0	0.0	0.0	0.0	0.0	0.0	0.0
Ing. El Angel	El Angel	0.0	0.0	0.0	0.0	0.0	0.0	0.0	0.0	0.0	0.0	0.0	0.0	0.0
	Sub-Total	0.0	0.0	0.0	0.0	0.0	0.0	0.0	0.0	0.0	0.0	0.0	0.0	0.0
Hanesbrands	Opico	5.5	5.6	6.0	6.0	6.3	6.1	6.3	6.1	5.2	6.4	5.3	3.0	67.8
	Sub-Total	5.5	5.6	6.0	6.0	6.3	6.1	6.3	6.1	5.2	6.4	5.3	3.0	67.8
Termopuerto	Termopuerto	0.0	0.0	0.1	0.1	0.0	0.0	0.0	0.0	0.0	0.0	0.0	0.0	0.3
	Sub-Total	0.0	0.0	0.1	0.1	0.0	0.0	0.0	0.0	0.0	0.0	0.0	0.0	0.3
Abruzzo Distribuidor	Ateos	0.0	0.0	0.0	0.0	0.0	0.0	0.0	0.0	0.0	0.0	0.0	0.0	0.0
	Sub-Total	0.0	0.0	0.0	0.0	0.0	0.0	0.0	0.0	0.0	0.0	0.0	0.0	0.0
American Park	Ateos	0.0	0.0	0.0	0.0	0.0	0.0	0.0	0.0	0.0	0.0	0.0	0.0	0.0
	Sub-Total	0.0	0.0	0.0	0.0	0.0	0.0	0.0	0.0	0.0	0.0	0.0	0.0	0.0
TOTAL GENERAL		502.7	467.8	499.9	521.7	521.5	488.4	517.4	499.7	484.8	515.1	492.3	488.8	6,000.2

^{2/} Valores corresponden al consumo propio

^{3/} Desde el 22/07/2013 09:00 a.m.

XII- Interrupciones de servicio

Cuadro No. 17

	Ene	Feb	Mar	Abr	May	Jun	Jul	Ago	Sep	Oct	Nov	Dic	Total
Líneas de 230 kV(*)	22	12	20	7	12	8	6	10	6	16	1	12	132
Líneas de 115 kV	17	24	24	37	25	40	33	40	24	37	22	13	336
Circuitos de 46 kV	73	55	85	92	134	162	134	182	121	148	96	85	1,367
Circuitos de 34.5 kV	17	2	5	9	9	18	7	6	11	10	4	1	99
Circuitos de 23 kV	5	6	10	4	6	14	6	11	8	6	4	9	89
TOTALES	134	99	144	149	186	242	186	249	170	217	127	120	2,023

(*) Incluye Interconexión con Guatemala y Honduras, SIEPAC y Refuerzos Internos

Cuadro No. 18

TIPO DE INTERRUPCION	Ene	Feb	Mar	Abr	May	Jun	Jul	Ago	Sep	Oct	Nov	Dic	Total
Mantenimiento en líneas de transmisión a 115 kV	15	20	16	26	18	19	20	20	16	14	14	11	209
Falla en líneas de transmisión a 115 kV	2	4	8	11	7	21	13	20	8	23	8	2	127
Mantenimiento en líneas de transmisión a 230 kV Interna (1)	0	0	2	1	1	0	0	0	0	3	1	5	13
Falla en líneas de transmisión a 230 kV Internas (1)	0	2	0	0	2	1	1	4	1	1	0	0	12
Aperturas por otras causas en L T a 230 kV Internas (3)	9	2	9	0	0	0	4	4	0	0	0	2	30
Mantenimiento en líneas de interconexión (2)	0	2	4	4	5	2	0	0	1	3	0	0	21
Fallas en líneas de interconexión (2)	4	4	4	2	2	1	1	2	2	3	0	2	27
Operación del EDLI (2)	1	0	0	0	0	0	0	0	0	0	0	0	1
Aperturas por otras causas en líneas de interconexión (3)	8	2	1	0	2	4	0	0	2	6	0	3	28
Mantenimientos de circuitos de distribución	35	32	28	45	47	34	33	35	33	19	38	55	434
Fallas en circuitos de distribución	60	31	72	60	102	160	114	164	107	145	66	40	1,121
TOTALES	134	99	144	149	186	242	186	249	170	217	127	120	2,023

(1) Incluye SIEPAC y Refuerzos Internos a 230 kV; (2) Interconexiones con Guatemala y Honduras; (3) Típicamente por Control de Voltaje

También se han observado y se incluyen aquí eventos de aperturas por protección de "sobre voltaje" en Honduras o bien aperturas en Guatemala por oscilaciones en el sistema interconectado de Centroamérica.

Cuadro No. 19

RESPONSABLE	Ene	Feb	Mar	Abr	May	Jun	Jul	Ago	Sep	Oct	Nov	Dic	Total
ANDA	1	4	4	6	5	1	3	5	3	5	1	1	39
B&D	0	2	0	0	0	4	4	2	2	0			14
CAESS	8	2	8	3	12	5	5	13	15	12	6	10	99
CASSA	0	0	0	1	0	0	3	0	2	1			7
HOLCIM	6	1	2	3	7	2	4	1	1	5		1	33
CLESA	19	9	22	23	41	37	28	33	23	42	15	18	310
DELSUR	25	14	28	20	35	55	36	60	43	42	25	25	408
EEO	14	9	21	28	38	59	41	66	39	35	37	20	407
DEUSEM	2	2	7	6	1	3	5	5	0	1	3	1	36
EDESAL	3	0	0	2	2	4	3	3	0	1	2	2	22
ETESAL	34	40	27	46	31	68	46	46	31	53	35	27	484
NEJAPA POWER	0	0	0	0	0	0	0	1	0	0			1
HANES	0	1	4	0	0	0	2	0	0	0	1	3	11
UT	10	2	9	0	0	0	4	4	0	0		2	31
LAGEO	0	0	0	0	0	0	0	0	0	2			2
DUKE ENERGY	0	1	0	0	0	0	0	0	0	0			1
INE	0	0	0	0	1	0	0	0	0	0			1
TERMOPUERTO	0	2	1	4	2	0	1	4	5	2	1	2	24
GUATEMALA	4	1	3	3	3	4	0	0	4	7		2	31
HONDURAS	4	3	1	0	3	0	0	1	1	0		1	14
NICARAGUA	0	0	0	0	0	0	0	0	0	2			2
COSTA RICA	0	0	0	0	0	0	0	2	0	0			2
PANAMA	0	1	0	0	0	0	0	0	0	0			1
EPR	4	5	7	4	5	0	1	3	1	7	1	5	43
TOTALES	134	99	144	149	186	242	186	249	170	217	127	120	2,023



XIII- Límites de voltaje

Enero - Diciembre

Cuadro No. 20

ENTREGAS A 34.5 Kv						
VOLTAJES	SUBESTACION					
	ACAJUTLA			ATEOS		
	DEMANDA			DEMANDA		
	min	med	max	min	med	max
>1.05	0	2	0	0	1	0
<0.95	0	0	0	0	0	0

ENTREGAS A 23 Kv															
VOLTAJES	SUBESTACION														
	NVO. CUSCATLAN			SAN BARTOLO			NEJAPA			SAN ANTONIO			SOYAPANGO		
	DEMANDA			DEMANDA			DEMANDA			DEMANDA			DEMANDA		
	min	med	max	min	med	max	min	med	max	min	med	max	min	med	max
>1.05	328	226	10	0	0	0	0	0	0	0	0	0	70	132	1
<0.95	0	0	0	0	0	0	0	0	0	0	0	0	0	0	0

ENTREGAS A 46 Kv															
VOLTAJES	SUBESTACION														
	SONSONATE			SANTO TOMAS			OPICO			SOYAPANGO			ATEOS		
	DEMANDA			DEMANDA			DEMANDA			DEMANDA			DEMANDA		
	min	med	max	min	med	max	min	med	max	min	med	max	min	med	max
>1.05	0	0	0	0	0	0	0	2	0	114	91	6	0	0	0
<0.95	0	0	0	0	0	0	0	0	0	0	0	0	0	0	0

VOLTAJES	SUBESTACION														
	SAN MIGUEL			TECOLUCA			15 DE SEPT.			S. R. CEDROS			CERRON GRANDE		
	DEMANDA			DEMANDA			DEMANDA			DEMANDA			DEMANDA		
	min	med	max	min	med	max	min	med	max	min	med	max	min	med	max
>1.05	0	0	0	0	0	0	0	0	0	0	0	0	0	39	1
<0.95	0	0	0	0	0	0	0	0	0	0	0	0	0	0	0

VOLTAJES	SUBESTACION														
	GUAJOYO			SANTA ANA			AHUACHAPAN			ACAJUTLA			OZATLAN		
	DEMANDA			DEMANDA			DEMANDA			DEMANDA			DEMANDA		
	min	med	max	min	med	max	min	med	max	min	med	max	min	med	max
>1.05	0	0	0	0	0	0	2	0	0	0	25	2	0	0	0
<0.95	0	1	0	0	0	0	0	0	0	0	0	2	0	0	0

VOLTAJES	SUBESTACION								
	PEDREGAL			LA UNION			TALNIQUE		
	DEMANDA			DEMANDA			DEMANDA		
	min	med	max	min	med	max	min	med	max
>1.05	0	0	0	0	0	0	0	0	0
<0.95	0	0	1	0	0	0	0	0	0

NOTA: LAS MUESTRAS CONTABILIZADAS TIENEN UNA DURACION DE UNA HORA.

XIV- Cuadro de Mantenimientos Programados

SEMANA 20 DE 2013 - SEMANA 19 DE 2014

	PLANTA/UNIDAD	PROGRAMADO	DURACIÓN	REPROGRAMADO	DURACIÓN	EJECUTADO	DURACIÓN	MOTIVO			
CEL	CERRON GRANDE										
	UNIDAD 1	29-jun-13	01-jul-13	3 DIAS			29-jun-13	04-jul-13	6 DIAS	Inspeccion rodete de turbina	
	UNIDAD 2	13-may-13	03-jun-13	22 DIAS			13-may-13	08-jun-13	27 DIAS	Mantenimiento mayor y reparación del alabe #9 (entre alabe y corona del rodete de turbina)	
	5 DE NOVIEMBRE										
	UNIDAD 2	11-ene-14	26-ene-14	16 DIAS	01-feb-14	16-feb-14	16 DIAS			Mantenimiento mayor	
UNIDAD 4	22-feb-14	09-mar-14	16 DIAS						Inspección del generador		
UNIDAD 5	01-feb-14	16-feb-14	16 DIAS	11-ene-14	26-ene-14	16 DIAS			Mantenimiento mayor		
15 DE SEPTIEMBRE											
UNIDAD 1	04-nov-13	31-may-14	209 DIAS	22-nov-13	04-jun-14	195 DIAS	22-nov-13		Mantenimiento mayor- reemplazo de cojinete de empuje del generador-Corrección de fuga de aceite del sistema de control y cambio de bujes de los alabes del rodete		
LAGEO	AHUACHAPAN										
	UNIDAD 2	09-jun-13	07-jul-13	29 DIAS			09-jun-13	05-jul-13	27 DIAS	Mantenimiento mayor	
	UNIDAD 3	04-ago-13	31-ago-13	28 DIAS			04-ago-13	30-ago-13	27 DIAS	Mantenimiento mayor	
	BERLIN										
	UNIDAD 2	14-oct-13	03-nov-13	21 DIAS			14-oct-13	02-nov-13	20 DIAS	Mantenimiento mayor	
UNIDAD 4	14-oct-13	03-nov-13	21 DIAS			14-oct-13	03-nov-13	21 DIAS	Mantenimiento mayor		
BERL	27-oct-13	27-oct-13	9 HORAS			27-oct-13	27-oct-13	1 DIAS	Mantenimiento subestación		
DUKE ENERGY	ACAJUTLA										
	MOTOR 4	13-jul-13	08-ago-13	27 DIAS			13-jul-13	08-ago-13	27 DIAS	Mantenimiento de 72,000 horas	
	MOTOR 5	12-oct-13	07-nov-13	27 DIAS			12-oct-13	07-nov-13	27 DIAS	Mantenimiento de 72,000 horas	
	MOTOR 6	31-ago-13	26-sep-13	27 DIAS			31-ago-13	26-sep-13	27 DIAS	Mantenimiento de 72,000 horas	
	MOTOR 9	18-may-13	21-jun-13	35 DIAS			18-may-13	20-jun-13	34 DIAS	Mantenimiento de 60,000 horas	
	UNIDAD 2	05-oct-13	10-nov-13	37 DIAS			05-oct-13	05-nov-13	32 DIAS	Mantenimiento mayor de 8,000 horas	
	UNIDAD 5	13-ago-13	04-oct-13	53 DIAS			Suspendido por la Planta			Mantenimiento mayor (paso de gases calientes)	
SOYAPANGO											
MOTOR 2	01-jul-13	28-jul-13	28 DIAS			01-jul-13	03-ago-13	34 DIAS	Mantenimiento de 32,000 horas		
CENERGICA	NEJAPA POWER										
	MOTOR 1	03-nov-13	10-nov-13	7.5 DIAS			03-nov-13	12-nov-13	10 DIAS	Mantenimiento intermedio de motor y generador	
	MOTOR 2	29-sep-13	06-oct-13	7.5 DIAS			29-sep-13	07-oct-13	9 DIAS	Mantenimiento intermedio de motor y generador	
	MOTOR 5	08-dic-13	23-dic-13	16 DIAS			08-dic-13	20-dic-13	13 DIAS	Mantenimiento mayor de motor y generador	
	MOTOR 6	17-nov-13	02-dic-13	16 DIAS	24-nov-13	08-dic-13	15 DIAS	24-nov-13	06-dic-13	13 DIAS	Mantenimiento mayor de motor y generador
	MOTOR 7	16-jun-13	23-jun-13	7.5 DIAS			15-jun-13	26-jun-13	12 DIAS	Mantenimiento intermedio de motor y generador	
	MOTOR 8	14-jul-13	29-jul-13	16 DIAS			14-jul-13	29-jul-13	16 DIAS	Mantenimiento mayor de motor y generador	
	MOTOR 9	12-may-13	19-may-13	7.5 DIAS			12-may-13	19-may-13	8.0 DIAS	Mantenimiento intermedio de motor y generador	
	MOTOR 13	26-may-13	10-jun-13	16 DIAS			26-may-13	07-jun-13	13 DIAS	Mantenimiento mayor de motor y generador	
	MOTOR 18	18-ago-13	25-ago-13	7.5 DIAS			18-ago-13	26-ago-13	9.0 DIAS	Mantenimiento intermedio de motor y generador	
	MOTOR 19	15-sep-13	22-sep-13	7.5 DIAS			15-sep-13	24-sep-13	10.0 DIAS	Mantenimiento intermedio de motor y generador	
	MOTOR 21	30-jun-13	07-jul-13	7.5 DIAS			30-jun-13	09-jul-13	10.0 DIAS	Mantenimiento intermedio de motor y generador	
	MOTOR 23	13-oct-13	28-oct-13	16 DIAS			13-oct-13	28-oct-13	16 DIAS	Mantenimiento mayor de motor y generador	
	MOTOR 24	01-sep-13	08-sep-13	7.5 DIAS			01-sep-13	07-sep-13	7.0 DIAS	Mantenimiento intermedio de motor y generador	
	MOTOR 26	04-ago-13	11-ago-13	7.5 DIAS			04-ago-13	11-ago-13	8.0 DIAS	Mantenimiento intermedio de motor y generador	
	NEPO	18-ago-13	18-ago-13	12 HORAS			18-ago-13	18-ago-13	12 HORAS	Mantenimiento cuchillas de subestación y repriete de barras (indisponible 144 MW)	
	NEPO	16-ago-13	18-ago-13	2.5 DIAS			16-ago-13	18-ago-13	2.5 DIAS	Mantenimiento de transformador y reparación de interruptor de potencia (indisponibles 54 MW)	
HILCASA	HILCASA										
	MOTOR 1	28-oct-13	02-nov-13	6 DIAS			Suspendido por la Planta			Mantenimiento de 3,000 horas	
	MOTOR 2	21-oct-13	26-oct-13	6 DIAS			Suspendido por la Planta			Mantenimiento de 3,000 horas	
	MOTOR 3	14-oct-13	19-oct-13	6 DIAS			Suspendido por la Planta			Mantenimiento de 3,000 horas	
MOTOR 4	07-oct-13	12-oct-13	6 DIAS			Suspendido por la Planta			Mantenimiento de 3,000 horas		
INE	TALNIQUE										
	MOTOR 1	22-jun-13	12-jul-13	21 DIAS	13-jul-13	02-ago-13	21 DIAS	13-jul-13	08-ago-13	27 DIAS	Mantenimiento de 48,000 horas
	MOTOR 2	27-jul-13	16-ago-13	21 DIAS	16-nov-13	06-dic-13	21 DIAS	16-nov-13	09-dic-13	24 DIAS	Mantenimiento de 48,000 horas
	MOTOR 3	31-ago-13	20-sep-13	21 DIAS	21-sep-13	11-oct-13	21 DIAS	21-sep-13	16-oct-13	26 DIAS	Mantenimiento de 48,000 horas
	MOTOR 4	12-abr-14	26-abr-14	15 DIAS							Mantenimiento de 36,000 horas
	MOTOR 5	08-mar-14	22-mar-14	15 DIAS							Mantenimiento de 36,000 horas
	MOTOR 9	02-feb-14	16-feb-14	15 DIAS							Mantenimiento de 36,000 horas
	MOTORES 1 a 3	19-ene-14	19-ene-14	9 HORAS							Mantenimiento anual Transformador No. 1 115/13.8 kV
	MOTORES 4 a 9	26-ene-14	26-ene-14	9 HORAS							Mantenimiento anual Transformador No. 2 115/13.8 kV
TEXTUFIL	TEXTUFIL										
	MOTOR 3	31-ago-13	09-sep-13	10 DIAS			31-ago-13	10-sep-13	11 DIAS	Mantenimiento de 30,000 horas	
	MOTOR 4	28-sep-13	07-oct-13	10 DIAS			28-sep-13	08-oct-13	11 DIAS	Mantenimiento de 45,000 horas	
	MOTOR 5	14-sep-13	23-sep-13	10 DIAS	17-sep-13	26-sep-13	10 DIAS	17-sep-13	26-sep-13	10 DIAS	Mantenimiento de 15,000 horas
	MOTOR 6	18-may-13	27-may-13	10 DIAS			18-may-13	25-may-13	8 DIAS	Mantenimiento de 7,500 horas	
MOTOR 7	01-jun-13	12-jun-13	12 DIAS			01-jun-13	08-jun-13	8 DIAS	Mantenimiento de 7,500 horas		
BOREALK	BOREALIS										
	MOTOR 1	18-sep-13	02-oct-13	15 DIAS			Suspendido por la Planta			Mantenimiento 6,000 horas	
	MOTOR 4	23-oct-13	06-nov-13	15 DIAS			Suspendido por la Planta			Mantenimiento 6,000 horas	
MOTOR 8	14-ago-13	28-ago-13	15 DIAS			Suspendido por la Planta			Mantenimiento 6,000 horas		



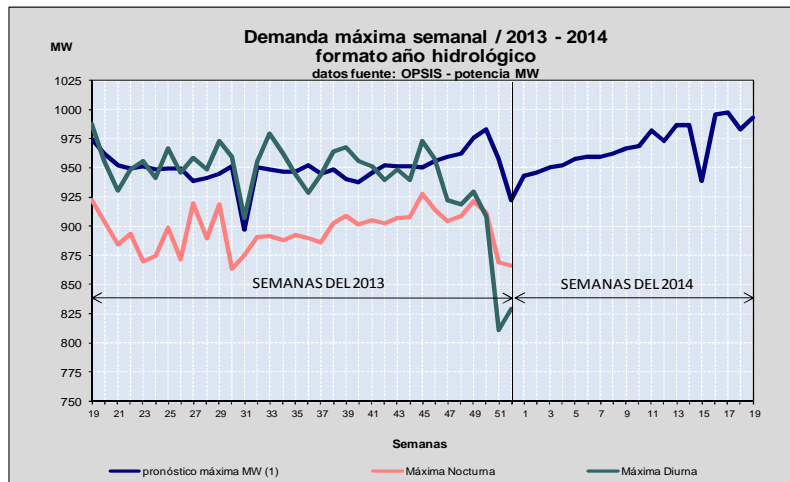
XV- Demanda máxima coincidental por recurso

Cuadro No. 22

Demanda máxima coincidental por recurso												
RECURSO	Ene 10	Feb 27	Mar 12	Abr 16	May 15	Jun 27	Jul 24	Ago 21	Sep 26	Oct 2	Nov 14	Dic 12
DIA DEL MES	15:00 Jueves	14:30 Miércoles	14:30 Martes	14:30 Martes	14:30 Miércoles	15:00 Jueves	14:30 Miércoles	15:00 Miércoles	11:00 Jueves	14:30 Miércoles	14:00 Jueves	11:30 Jueves
GUAJOYO	16	15	15	0	12	13	13	0	16	15	18	18
HOLCIM	0	0	0	0	0	0	0	0	0	0	0	0
CERRON GRANDE	78	146	154	138	64	67	142	145	80	81	158	82
5 DE NOVIEMBRE	68	67	86	83	72	93	87	82	85	81	79	82
15 DE SEPTIEMBRE	152	93	92	127	90	181	183	182	181	179	155	91
AHUACHAPAN	76	74	75	74	75	61	75	52	74	75	73	72
BERLIN	98	98	99	99	97	59	97	90	100	99	94	94
ACAJUTLA	128	140	121	107	146	116	98	126	121	127	127	166
SOYAPANGO	10	14	14	0	14	0	9	0	14	0	0	0
NEJAPA POWER	124	134	132	129	132	138	130	104	14	5	4	61
CASSA	27	27	25	20	21	16	0	0	0	0	9	7
TEXTUFIL	26	33	26	38	32	38	25	33	41	26	39	41
TALNIQUE	86	86	75	76	92	93	63	76	79	62	84	94
GECSA	0	11	10	0	11	0	11	0	0	0	0	0
BOREALIS	0	0	12	0	12	0	0	0	0	0	0	0
HILCASA	0	6	6	0	6	0	6	0	6	0	0	0
TERMOPUERTO	0	0	3	55	55	73	0	70	52	70	69	52
INGENIO EL ANGEL	23	24	19	29	0	0	0	0	0	0	10	5
INGENIO LA CABAÑA	0	0	2	3	7	0	0	0	0	0	3	4
INGENIO CHAPARRASTIQUE	5	5	5	8	0	0	0	0	0	0	0	7
IMPORTACION NETA(*)	25	0	7	19	53	28	37	25	100	148	51	62
EXPORTACION NETA (*)	0	5	0	0	0	0	0	0	0	0	0	0
DEMANDA NACIONAL	943	968	978	1,004	994	975	974	985	964	968	973	937

(*) Nota: El número positivo corresponde a importación, y un número negativo a exportación.

Gráfico No. 12





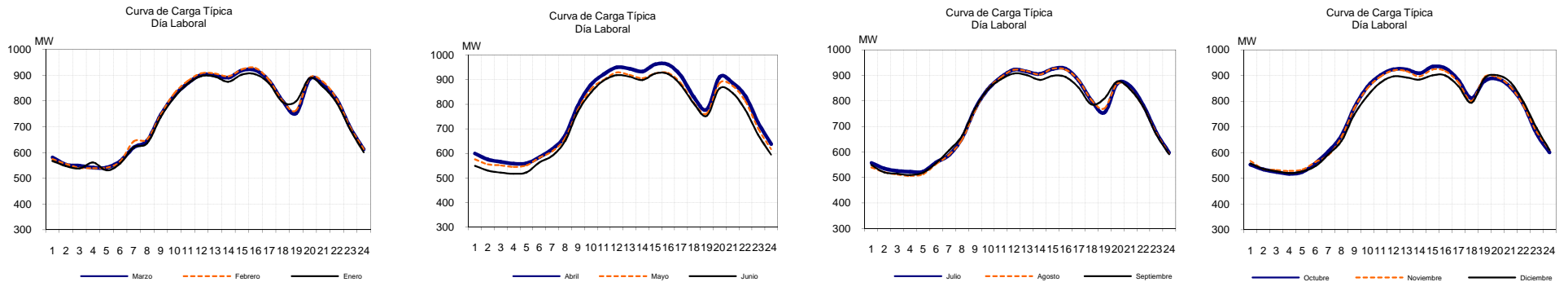
XVI- Curvas típicas de carga

Día Laboral

Cuadro No. 23
Curvas típicas de carga (MW)

HORA	Enero	Febrero	Marzo	Abril	Mayo	Junio	Julio	Agosto	Septiembre	Octubre	Noviembre	Diciembre
1	567	575	581	599	576	549	557	539	548	553	568	558
2	547	555	553	575	555	530	535	521	520	535	537	537
3	538	541	549	566	551	521	525	512	515	525	533	527
4	561	539	542	558	545	517	522	506	509	517	529	520
5	531	541	542	559	551	523	523	513	519	525	535	527
6	557	565	567	585	582	563	559	552	556	559	564	548
7	620	643	620	618	609	590	588	589	607	605	591	594
8	636	652	647	672	662	650	654	647	663	666	661	646
9	738	748	747	795	777	770	769	762	769	776	773	748
10	814	830	821	879	861	847	845	847	846	856	850	820
11	867	878	870	922	899	896	892	892	883	901	895	872
12	897	908	902	950	929	918	922	921	907	924	920	896
13	895	907	899	945	919	912	915	916	901	924	917	892
14	875	896	891	933	906	898	905	903	882	908	896	884
15	903	923	919	962	926	925	925	926	898	934	923	901
16	904	928	919	961	927	923	926	922	894	927	917	900
17	868	881	878	915	885	877	880	881	852	882	873	858
18	796	800	800	829	805	802	801	804	786	812	801	794
19	799	764	753	779	762	753	754	770	809	878	894	889
20	889	890	886	911	886	864	868	868	876	887	892	901
21	854	874	863	887	875	846	857	845	844	855	856	873
22	792	808	805	833	812	777	783	777	777	786	782	796
23	689	697	696	725	700	674	677	674	669	675	682	696
24	601	613	613	638	617	595	597	592	590	601	611	611

Gráfico No. 13



XVI- Curvas típicas de carga

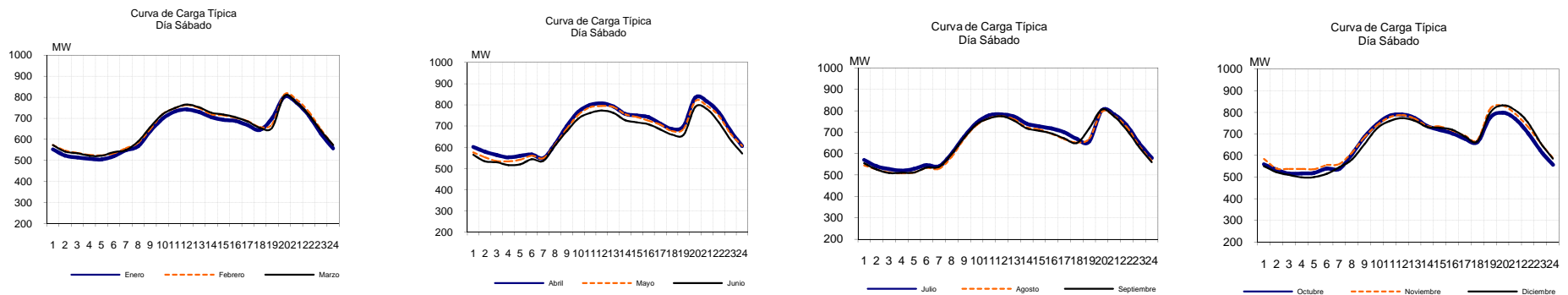
Día Sábado

Cuadro No. 24

Curvas típicas de carga (MW)

HORA	Enero	Febrero	Marzo	Abril	Mayo	Junio	Julio	Agosto	Septiembre	Octubre	Noviembre	Diciembre
1	553	573	572	602	575	564	570	545	555	559	584	550
2	523	547	542	578	553	534	540	526	526	534	540	523
3	514	536	534	563	535	529	527	511	509	517	538	510
4	508	526	522	552	534	516	520	508	510	517	538	499
5	505	524	523	559	541	519	528	512	512	520	537	500
6	521	534	539	566	560	543	546	533	534	540	556	516
7	549	559	549	549	549	536	541	529	538	538	560	546
8	568	584	590	616	612	609	600	584	598	605	613	582
9	640	650	658	699	688	676	679	669	674	686	684	652
10	699	719	719	767	754	736	743	732	736	746	741	726
11	733	747	749	799	788	761	779	765	764	784	777	759
12	742	762	765	807	794	773	783	774	774	790	787	773
13	730	748	752	791	789	761	773	759	753	774	771	761
14	706	719	727	757	755	727	739	723	718	736	736	732
15	692	714	718	749	742	717	727	713	706	718	735	728
16	688	702	705	741	724	708	717	692	694	703	716	719
17	667	687	684	711	707	684	699	667	671	677	692	688
18	645	659	655	685	676	660	669	652	649	663	673	666
19	701	672	655	699	687	660	656	670	717	775	816	798
20	802	812	805	833	817	790	801	794	805	798	831	832
21	773	789	774	815	794	779	782	776	773	770	793	810
22	713	731	716	763	748	718	732	723	710	705	735	754
23	627	647	641	678	665	636	649	635	629	623	658	659
24	557	571	573	606	606	570	579	566	560	557	589	586

Gráfico No. 14





XVI- Curvas típicas de carga

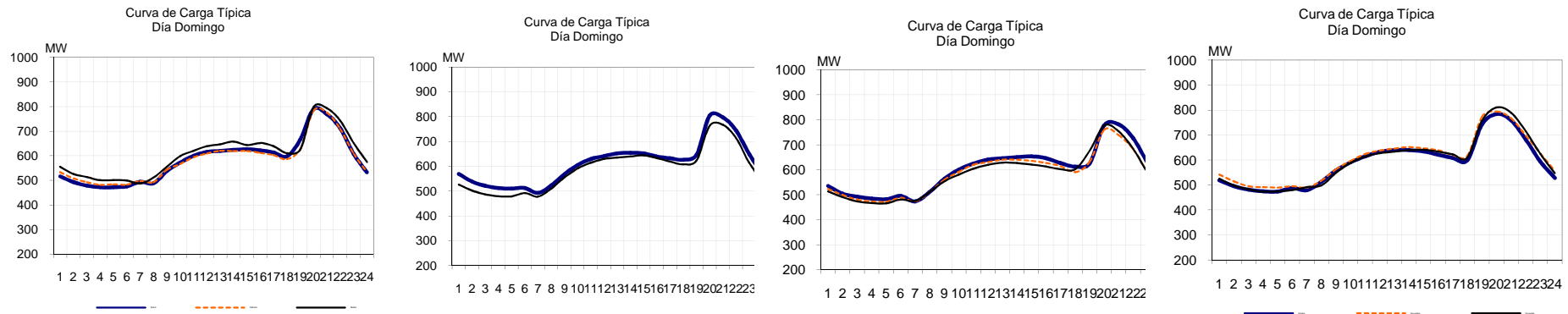
Día Domingo

Cuadro No. 25

Curvas típicas de carga (MW)

HORA	Enero	Febrero	Marzo	Abril	Mayo	Junio	Julio	Agosto	Septiembre	Octubre	Noviembre	Diciembre
1	517	534	555	570	547	526	536	523	514	519	542	526
2	493	508	526	539	519	502	505	500	491	496	515	498
3	479	493	514	522	504	487	493	481	474	482	495	483
4	472	482	501	513	497	480	485	474	467	475	492	474
5	472	484	501	511	497	479	482	472	466	474	490	475
6	476	483	499	513	508	493	496	488	481	489	495	480
7	495	498	487	493	490	478	474	474	476	479	490	492
8	489	493	512	524	523	510	512	511	511	513	518	499
9	539	543	555	568	568	556	564	560	554	559	564	549
10	573	567	598	605	603	592	601	592	581	591	596	588
11	600	594	620	630	630	615	625	620	605	615	624	613
12	616	609	639	641	648	630	641	631	620	633	638	627
13	620	620	647	652	654	635	647	640	629	639	646	634
14	624	619	658	655	654	640	651	640	627	640	652	639
15	626	619	643	652	654	644	654	636	621	634	647	642
16	622	612	652	639	643	633	646	628	613	621	639	634
17	613	603	639	633	634	619	627	615	603	608	621	623
18	598	586	611	626	617	608	613	591	603	599	617	610
19	666	628	626	647	641	623	626	632	676	742	773	756
20	789	784	799	804	791	764	778	760	777	784	794	810
21	768	775	793	797	790	767	782	739	754	760	767	789
22	711	710	742	744	731	714	726	682	684	683	698	715
23	608	608	651	648	631	614	628	592	588	594	626	624
24	533	533	574	572	557	539	553	526	520	528	558	547

Gráfico No. 15





XVI- Curvas típicas de carga estación seca

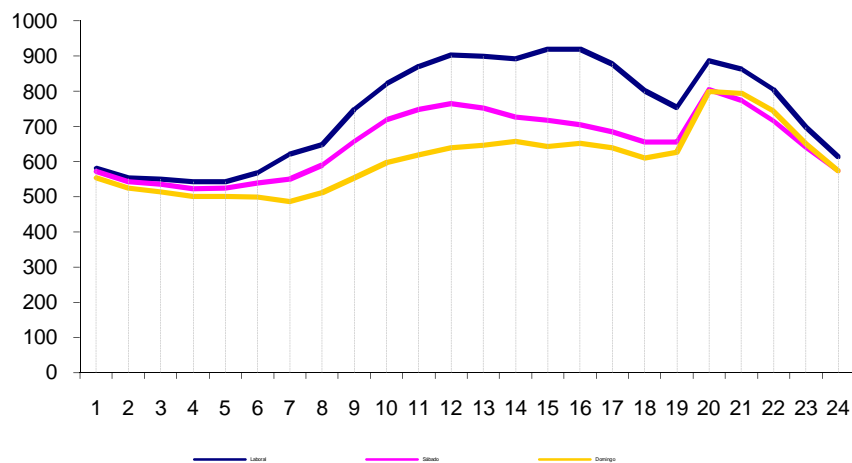
Cuadro No. 26

Hora	Laboral	Sábado	Domingo
1	581	572	555
2	553	542	526
3	549	534	514
4	542	522	501
5	542	523	501
6	567	539	499
7	620	549	487
8	647	590	512
9	747	658	555
10	821	719	598
11	870	749	620
12	902	765	639
13	899	752	647
14	891	727	658
15	919	718	643
16	919	705	652
17	878	684	639
18	800	655	611
19	753	655	626
20	886	805	799
21	863	774	793
22	805	716	742
23	696	641	651
24	613	573	574

Nota: corresponde al mes de Marzo 2013

Gráfico No. 16

Curva de Carga Típica
Estación Seca





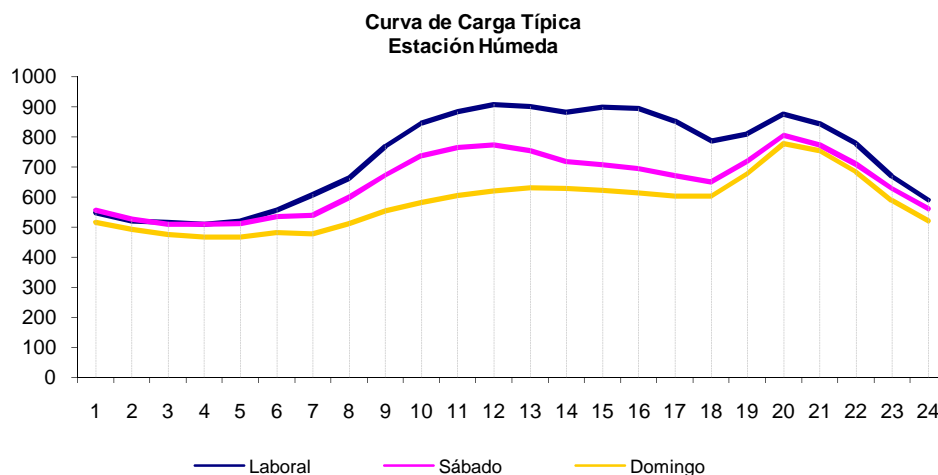
XVI- Curvas típicas de carga estación húmeda

Cuadro No. 27

Hora	Laboral	Sábado	Domingo
1	548	555	514
2	520	526	491
3	515	509	474
4	509	510	467
5	519	512	466
6	556	534	481
7	607	538	476
8	663	598	511
9	769	674	554
10	846	736	581
11	883	764	605
12	907	774	620
13	901	753	629
14	882	718	627
15	898	706	621
16	894	694	613
17	852	671	603
18	786	649	603
19	809	717	676
20	876	805	777
21	844	773	754
22	777	710	684
23	669	629	588
24	590	560	520

Nota: corresponde al período Septiembre-2013

Gráfico No. 17



XVII - Déficit de Reserva de Potencia

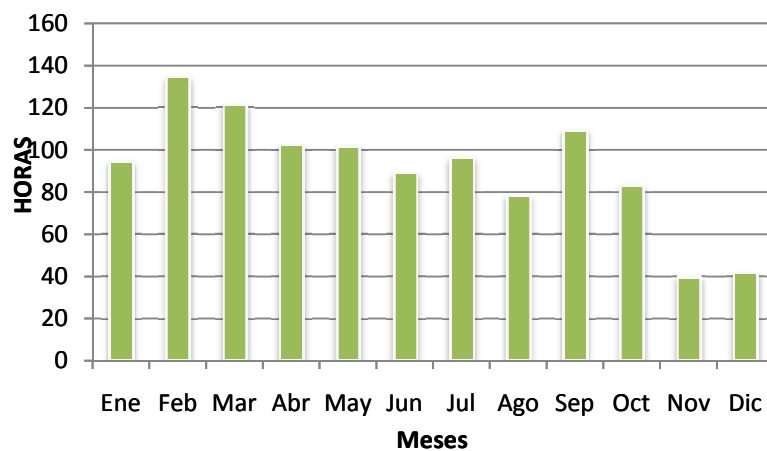
Cuadro No. 28

Mes	Total de horas con deficit de reserva (*)	Promedio de reserva	Margen Reserva Mínima Alcanzada
Ene	94.3	5.5%	3.9%
Feb	134.5	5.5%	3.6%
Mar	121.3	5.4%	4.1%
Abr	102.2	5.6%	3.9%
May	101.8	5.5%	3.7%
Jun	89.2	5.6%	4.5%
Jul	96.3	5.6%	4.5%
Ago	78.3	5.5%	4.0%
Sep	109.2	5.6%	4.1%
Oct	82.8	5.6%	4.1%
Nov	39.7	5.7%	4.5%
Dic	41.5	5.6%	4.2%
TOTAL	1091.1		

NOTA: EL REQUERIMIENTO MINIMO DE RESERVA RODANTE ES EL 7% DE LA DEMANDA
 (*) LAS MUESTRAS QUE HAN SIDO CONTABILIZADAS TIENEN UNA DURACIÓN DE MEDIA HORA
 LA MAYORIA DE LAS VIOLACIONES SON DEBIDAS A DEFICIT DE RESERVA POR ENTRADAS Y SALIDAS DE MAQUINAS.

Gráfico No. 18

Total Horas con Déficit de Reserva Rodante





XVIII- Cargos del Sistema

Cuadro No. 29

Meses	SIGET	UT	CUST	FLDDP/MR	FLEMG	PTRANSIS
Enero	\$278,317.65	\$338,120.81	\$2,835,072.47	\$23,425.41	\$0.00	\$1,209,242.93
Febrero	\$271,812.31	\$330,258.08	\$2,768,805.98	\$21,388.45	\$0.00	\$1,160,962.12
Marzo	\$279,099.80	\$338,828.28	\$2,843,039.74	\$7,654.70	\$0.00	\$1,283,151.29
Abril	\$292,363.19	\$354,702.34	\$2,978,146.78	\$13,355.54	\$0.00	\$1,426,537.32
Mayo	\$294,952.35	\$357,118.00	\$3,004,521.17	\$32,685.18	\$0.00	\$1,643,047.54
Junio^{1/}	\$270,189.23	\$327,156.96	\$2,752,272.57	\$39,656.04	\$0.00	\$1,380,053.49
Julio	\$283,525.17	\$343,622.94	\$2,891,047.14	\$68,259.40	\$0.00	\$1,366,304.41
Agosto	\$274,618.93	\$332,400.46	\$2,800,016.12	\$41,964.95	\$0.00	\$1,374,503.62
Septiembre	\$269,088.59	\$324,559.55	\$2,743,628.73	\$142,599.06	\$0.00	\$1,426,026.74
Octubre	\$285,109.16	\$343,951.80	\$2,906,974.57	-\$46,884.82	\$0.00	\$1,394,453.91
Noviembre	\$271,686.86	\$327,884.39	\$2,770,120.76	-\$53,733.76	\$0.00	\$1,329,505.25
Diciembre	\$269,632.50	\$325,487.35	\$2,749,174.51	\$1,286.47	\$0.00	\$1,384,519.52
TOTAL	\$3,340,395.74	\$4,044,090.97	\$34,042,820.54	\$291,656.62	\$0.00	\$16,378,308.13

^{1/} Enero a Mayo- FLDDP a partir de Junio 2013 : Monto Remanente

^{3/} Valores sin IVA

Cuadro No. 29-A

Meses	REACTIVOS	ACVOLTAJE	COMP_EFI	RFC	CCT	TOTAL
Enero	\$4,175.83	\$4,571.42	\$112,845.93	\$0.00	\$1,277,276.35	\$6,083,048.79
Febrero	\$4,220.86	\$4,571.42	\$115,250.80	\$0.00	\$1,258,887.79	\$5,936,157.81
Marzo	\$3,796.26	\$4,571.42	\$222,921.21	\$0.00	\$945,822.74	\$5,928,885.44
Abril	\$5,854.48	\$4,571.42	\$122,965.47	\$0.00	\$937,962.42	\$6,136,458.96
Mayo	\$5,100.53	\$4,571.42	\$652,037.18	\$0.00	\$937,844.81	\$6,931,878.17
Junio	\$5,332.21	\$4,571.42	\$203,650.77	\$0.00	\$937,690.31	\$5,920,573.00
Julio	\$5,810.42	\$4,571.42	\$432,176.85	\$0.00	\$891,282.02	\$6,286,599.77
Agosto	\$5,278.14	\$4,571.42	\$78,087.50	\$0.00	\$940,157.08	\$5,851,598.22
Septiembre	\$8,960.61	\$4,571.42	\$103,678.54	\$0.00	\$1,278,180.52	\$6,301,293.76
Octubre	\$10,137.30	\$4,571.42	\$309,876.80	\$0.00	\$1,271,649.76	\$6,479,839.90
Noviembre	\$8,941.84	\$4,571.42	\$174,139.00	\$0.00	\$1,274,698.41	\$6,107,814.18
Diciembre	\$6,955.43	\$4,571.42	\$172,541.16	\$0.00	\$1,270,925.54	\$6,185,093.90
TOTAL	\$74,563.92	\$54,857.03	\$2,700,171.21	\$0.00	\$13,222,377.75	\$74,149,241.90

^{1/} Valores calculados según el ROBCP.



XIX -Monto de Servicios Auxiliares

Cuadro No. 30

Meses	Control Automático de Generación
Enero	\$562,908.97
Febrero	\$584,107.83
Marzo	\$658,205.21
Abril	\$807,157.47
Mayo	\$1,108,283.09
Junio	\$1,343,985.26
Julio	\$1,727,189.69
Agosto	\$1,614,877.92
Septiembre	\$1,884,449.67
Octubre	\$1,862,543.80
Noviembre	\$704,385.01
Diciembre	\$574,610.68
TOTAL	\$13,432,704.59



Unidad de Transacciones, S.A.

Km 12 ½ carretera al Puerto de La Libertad, Nuevo Cuscatlán, Departamento de La Libertad, El Salvador, Centroamérica
Tel. 2521-7300
Fax. 2521-7301

Correo: conciliacion@ut.com.sv www.ut.com.sv