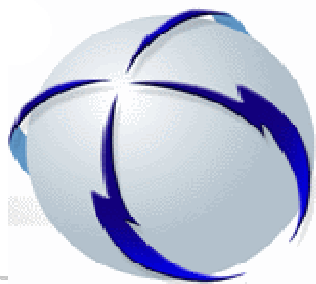


**Unidad de Transacciones, S.A.**



**BOLETÍN ESTADÍSTICO**  
**Enero - Diciembre 2012**



## CONTENIDO

	Pág.
I- Tasa de crecimiento de la demanda de energía	1
II- Inyección neta por planta	2
III- Inyecciones por recurso y por operador	3
IV- Transacciones Internacionales	4
V- Demanda de energía en el Mercado de Contratos	5-6
VI- Demanda de energía en el Mercado Regulador del Sistema	7
VII- Demanda total de energía en el Mercado Mayorista	8
VIII- Evolución de los precios en el MRS	9
IX- Comercializadores	10
X- Energía no servida y Pérdidas de transmisión	11
XI- Retiro de energía por nodo en la red de transmisión	12-13
XII- Interrupciones de servicio	14
XIII- Límites de voltaje	15
XIV- Programa de mantenimientos mayores	16
XV- Demanda máxima coincidental por recurso	17
XVI- Curvas típicas de carga	18
<b>Día Laboral</b>	18
<b>Día Sábado</b>	19
<b>Día Domingo</b>	20
<b>Estación seca</b>	21
<b>Estación lluviosa</b>	22
XVII- Déficit de Reserva de Potencia	23
XVII- Monto de Servicios Auxiliares	24
<b>Reactivos en Banco de Capacitores</b>	24
<b>Control Automático de Generación</b>	24
<b>Arranque en Cero Voltaje</b>	24
<b>Reserva Fría por Confiabilidad</b>	24
XVIII- Cargos por Operación del Sistema	24
<b>CAREN</b>	24
<b>CARTRA</b>	24
<b>CUST</b>	24
XIV- Cargos del Sistema	25

I- Tasa de crecimiento de la demanda de energía (%)

Cuadro No.1  
(Promedio Móvil 12 M)

Mes/Año	2001	2002	2003	2004	2005	2006	2007	2008	2009	2010	2011	2012
Enero	2.9	-0.6	7.3	3.5	3.3	5.7	8.6	2.9	4.1	-0.1	3.1	1.9
Febrero	2.0	0.2	7.3	3.5	3.1	6.3	8.2	3.4	3.3	0.3	2.9	2.1
Marzo	1.0	1.0	8.0	3.0	3.0	7.0	7.5	3.2	3.8	0.2	2.6	2.1
Abril	0.9	2.0	7.2	2.7	3.9	6.4	7.4	3.8	2.7	1.0	2.0	2.1
Mayo	0.5	2.9	6.8	2.4	4.2	6.9	6.7	3.8	2.0	1.9	1.8	1.7
Junio	0.0	3.5	6.7	2.5	4.4	7.0	6.4	3.8	1.7	2.1	2.0	1.5
Julio	-0.7	4.5	6.1	2.4	4.9	7.2	5.9	3.7	1.3	2.2	2.1	1.5
Agosto	-1.2	5.3	5.4	2.9	4.9	7.5	5.2	4.0	0.9	2.5	2.2	1.5
Septiembre	-1.4	6.1	4.9	2.9	5.2	7.7	4.7	4.3	0.4	2.7	2.2	1.6
Octubre	-1.5	6.6	4.5	2.9	5.1	8.8	3.6	4.4	0.4	2.6	1.7	2.5
Noviembre	-2.0	7.4	4.3	2.8	5.1	9.1	3.3	4.0	0.5	2.8	1.6	2.5
Diciembre	-2.0	7.9	3.7	3.3	5.1	9.2	3.0	4.1	0.4	2.5	2.1	2.2

Gráfico No. 1

Tasa de crecimiento de la energía  
Período: Enero 2001 - Diciembre 2012

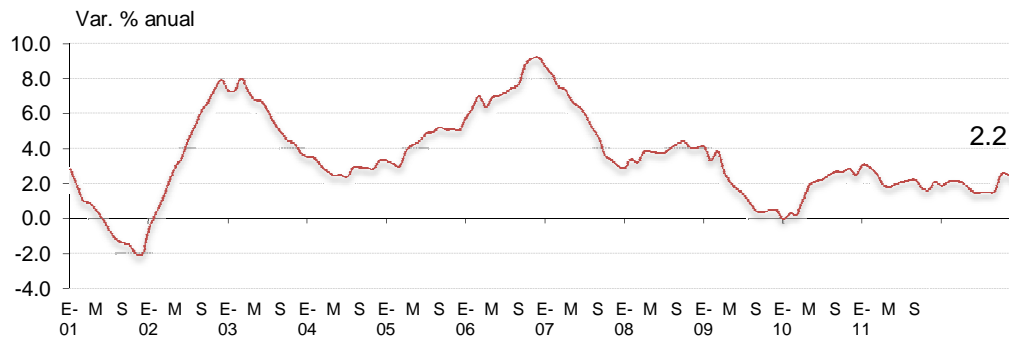
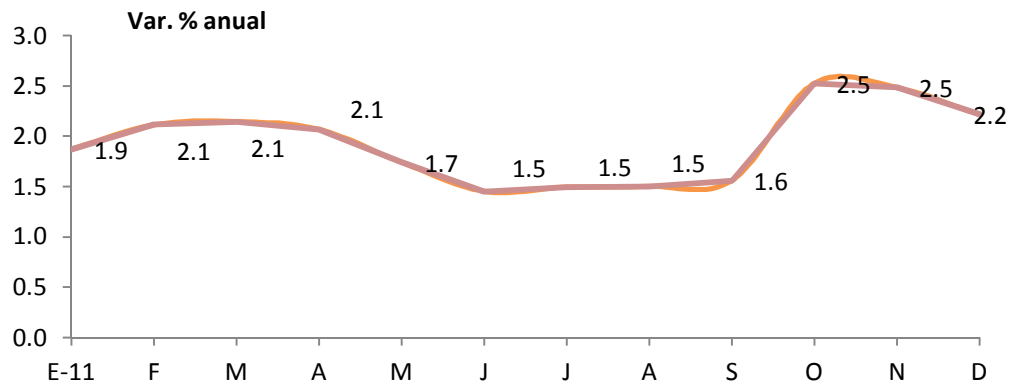


Gráfico No. 2

Tasa de crecimiento de la energía  
Período: Enero - Diciembre 2012



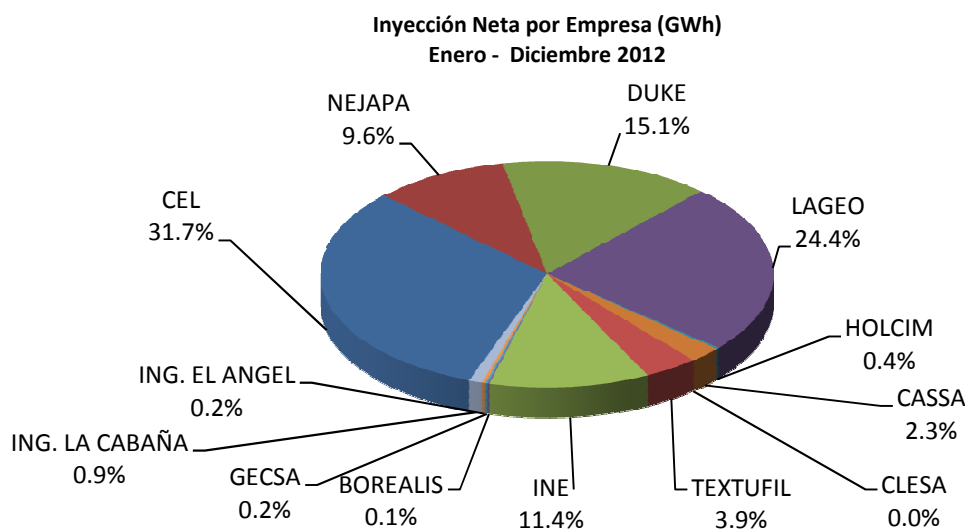
## II- Inyección por planta (GWh)

Cuadro No. 2

Generadores	Ene.	Feb.	Mar.	Abr.	May.	Jun.	Jul.	Ago.	Sep.	Oct.	Nov.	Dic.	Total
<b>Hidroeléctrica</b>	<b>137.9</b>	<b>119.3</b>	<b>121.5</b>	<b>125.8</b>	<b>162.0</b>	<b>170.6</b>	<b>105.3</b>	<b>173.3</b>	<b>245.3</b>	<b>254.9</b>	<b>125.3</b>	<b>100.7</b>	<b>1,841.9</b>
Guajoyo	9.3	9.9	9.8	8.0	6.7	5.9	3.0	3.2	2.9	3.4	7.4	6.0	75.5
Cerrón Grande	49.4	41.7	41.9	40.8	42.7	35.6	25.4	34.2	74.3	89.4	41.4	35.8	49.4
5 de Noviembre	47.8	41.4	43.5	46.1	55.8	53.9	36.8	45.5	53.3	52.4	42.7	34.7	553.8
15 de Septiembre	31.5	26.3	26.4	30.9	56.8	75.2	40.2	90.4	114.7	109.7	33.8	24.3	659.9
<b>Geotérmicas</b>	<b>126.1</b>	<b>114.1</b>	<b>124.6</b>	<b>120.3</b>	<b>120.1</b>	<b>111.0</b>	<b>123.4</b>	<b>124.2</b>	<b>106.5</b>	<b>106.3</b>	<b>115.4</b>	<b>128.2</b>	<b>1,420.4</b>
Ahuachapán	56.4	51.7	56.1	54.0	54.1	47.9	53.2	51.3	51.8	52.2	53.8	57.0	639.5
Berlín	69.7	62.5	68.5	66.3	66.0	63.1	70.2	73.0	54.7	54.1	61.6	71.2	781.0
<b>Térmicas</b>	<b>198.7</b>	<b>243.5</b>	<b>270.8</b>	<b>225.2</b>	<b>225.1</b>	<b>201.6</b>	<b>255.7</b>	<b>191.8</b>	<b>140.6</b>	<b>156.6</b>	<b>226.0</b>	<b>236.3</b>	<b>2,571.9</b>
Acajutla	82.1	74.0	73.6	69.5	66.8	57.6	77.1	75.6	53.9	55.7	77.8	77.3	841.0
Soyapango	5.2	5.8	6.2	4.3	1.9	0.4	2.4	0.9	3.2	3.6	0.6	0.4	35.0
Nejapa Power	12.1	48.6	65.5	47.7	53.6	62.0	84.9	39.8	25.7	34.4	47.5	39.1	560.9
AES Clesa <sup>1/</sup>	0.0	0.0	0.0	0.0	0.0	0.0	0.0	0.0	0.0	0.0	0.0	0.0	0.1
Holcim	0.8	1.0	1.9	1.3	3.1	2.7	1.4					0.0	12.3
Cassa	20.7	19.5	20.8	20.2	15.4						14.96	20.6	132.1
Textufil	13.7	19.8	21.1	16.9	18.5	17.4	20.7	21.3	14.2	15.4	23.3	22.1	224.4
Ine	52.0	60.5	60.9	54.5	61.4	58.5	59.1	52.2	42.1	47.1	52.8	60.6	661.7
Borealis	0.2	0.4	0.8	0.3	1.0	1.2	3.7	0.4	0.2	0.1	0.1	0.0	8.3
Gecsa	0.2	0.8	1.5	0.4	0.7	0.8	3.7	0.7	0.2	0.1	0.1	0.0	9.2
Inm. Apopa	1.9	2.2	1.7	0.9	1.6	0.9	2.7	1.0	1.0	0.2	0.1	0.1	14.2
Ing. El Angel	6.9	8.4	14.1	6.1							6.2	13.3	55.0
Ing. La Cabaña	2.9	2.6	2.7	3.0	1.1						2.6	2.7	17.6
Edesal <sup>1/</sup>	0.0	0.0											0.0
<b>Total</b>	<b>462.8</b>	<b>476.9</b>	<b>516.9</b>	<b>471.3</b>	<b>507.2</b>	<b>483.1</b>	<b>484.5</b>	<b>489.3</b>	<b>492.4</b>	<b>517.9</b>	<b>466.7</b>	<b>465.2</b>	<b>5,834.3</b>

<sup>1/</sup> Inyecciones provenientes de la red de distribución

Gráfico No. 3



## III- Inyecciones por recurso y por operador

Cuadro No. 3

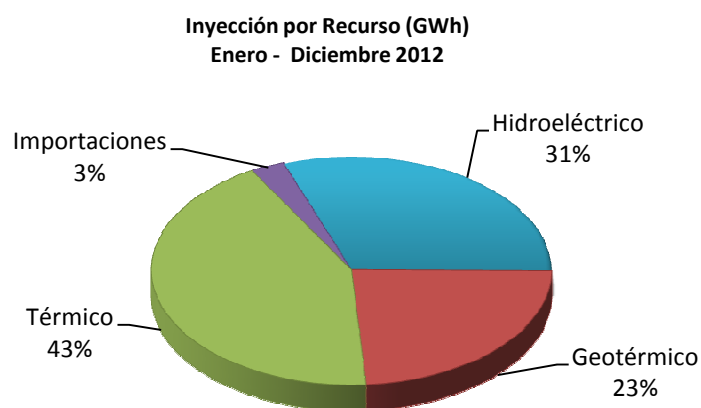
Inyecciones por Recurso (GWh)													
Recurso	Ene.	Feb.	Mar.	Abr.	May.	Jun.	Jul.	Ago.	Sep.	Oct.	Nov.	Dic.	Total
Hidroeléctrico	137.9	119.3	121.5	125.8	162.0	170.6	105.3	173.3	245.3	254.9	125.3	100.7	1,841.9
Geotérmico	126.1	114.1	124.6	120.3	120.1	111.0	123.4	124.2	106.5	106.3	115.4	128.2	1,420.4
Térmico	198.7	243.5	270.8	225.2	225.1	201.6	255.7	191.8	140.6	156.6	226.0	236.3	2,571.9
Importaciones	26.7	9.5	10.3	11.1	7.9	8.2	25.9	10.4	8.9	7.4	17.9	19.2	163.4
<b>Total</b>	<b>489.5</b>	<b>486.4</b>	<b>527.2</b>	<b>482.4</b>	<b>515.2</b>	<b>491.3</b>	<b>510.4</b>	<b>499.7</b>	<b>501.3</b>	<b>525.3</b>	<b>484.6</b>	<b>484.4</b>	<b>5,997.7</b>

Cuadro No. 4

Inyección nacional por Participante de Mercado (GWh)													
Participante de Mercado	Ene.	Feb.	Mar.	Abr.	May.	Jun.	Jul.	Ago.	Sep.	Oct.	Nov.	Dic.	Total
Cel	137.9	119.3	121.5	125.8	162.0	170.6	105.3	173.3	245.3	254.9	125.3	100.7	1,841.9
Nejapa Power	12.1	48.6	65.5	47.7	53.6	62.0	84.9	39.8	25.7	34.4	47.5	39.1	560.9
Duke Energy	87.3	79.8	79.7	73.8	68.8	58.0	79.5	76.5	57.1	59.3	78.4	77.6	876.0
LaGeo	126.1	114.1	124.6	120.3	120.1	111.0	123.4	124.2	106.5	106.3	115.4	128.2	1,420.4
Holcim	0.8	1.0	1.9	1.3	3.1	2.7	1.45					0.0	12.3
Cassa	20.7	19.5	20.8	20.2	15.4						15.0	20.6	132.1
Textufil	13.7	19.8	21.1	16.9	18.5	17.4	20.7	21.3	14.2	15.4	23.3	22.1	224.4
Ine, S.A.	52.0	60.5	60.9	54.5	61.4	58.5	59.1	52.2	42.1	47.1	52.8	60.6	661.7
AES Clesa 1/	0.0	0.0	0.0	0.0	0.0	0.0	0.0	0.0	0.0	0.0	0.0	0.0	0.1
Borealis	0.2	0.4	0.8	0.3	1.0	1.2	3.7	0.4	0.2	0.1	0.1	0.0	8.3
Gecsa	0.2	0.8	1.5	0.4	0.7	0.8	3.7	0.7	0.2	0.1	0.1	0.0	9.2
Inmob.Apopa	1.9	2.2	1.7	0.9	1.6	0.9	2.7	1.0	1.0	0.2	0.1	0.1	14.2
Ing. El Angel	6.9	8.4	14.1	6.1							6.2	13.3	55.0
Ing. La Cabaña	2.9	2.6	2.7	3.0	1.1						2.6	2.7	17.6
Edesal 1/	0.0	0.0											0.0
<b>Total</b>	<b>462.8</b>	<b>476.9</b>	<b>516.9</b>	<b>471.3</b>	<b>507.2</b>	<b>483.1</b>	<b>484.5</b>	<b>489.3</b>	<b>492.4</b>	<b>517.9</b>	<b>466.7</b>	<b>465.2</b>	<b>5,834.3</b>

<sup>1/</sup> Inyecciones provenientes de la red de distribución

Gráfico No. 4



## IV- Transacciones Internacionales

Cuadro No. 5

Importaciones (GWh)													
Participante de Mercado	Ene.	Feb.	Mar.	Abr.	May.	Jun.	Jul.	Ago.	Sep.	Oct.	Nov.	Dic.	Total
CECAM	2.7	1.3	1.6	2.0	1.1	0.6	3.0	0.4	0.1	0.3	2.5	1.9	17.5
CENER	0.7	0.1	0.0				0.7	0.0	0.3	0.1			1.8
CLESA							0.2	0.10					0.3
DELSUR	0.0	0.0	0.0	0.0	0.0	0.0	0.1	1.3	1.1	0.5	0.1	0.0	3.2
DUKE-COM	7.4	1.3	1.8	2.8	0.5	1.4	8.5	0.6	0.1				24.4
CENERGICA	1.0	0.0	0.1		0.0	0.1	1.3	0.8	0.3		1.7	2.9	8.2
ENERSICA												0.2	0.2
EXCELERGY	1.6		0.0	0.2	0.0		0.7	0.2			0.6	3.4	6.8
INE-COM	6.0	5.7	6.1	6.0	6.2	6.0	6.2	6.1	6.0	6.2	6.0	6.2	72.7
MERELEC	6.8	1.0	0.4	0.1	0.1	0.0	5.2	0.9	1.1	0.4	6.0	4.6	26.67
ORIGEM	0.6										0.9	0.1	1.56
SAN DIEGO												0.0209	0.0209
<b>Total</b>	<b>26.7</b>	<b>9.5</b>	<b>10.3</b>	<b>11.1</b>	<b>7.9</b>	<b>8.2</b>	<b>25.9</b>	<b>10.4</b>	<b>8.9</b>	<b>7.4</b>	<b>17.9</b>	<b>19.2</b>	<b>163.4</b>

Cuadro No. 6

Exportaciones (GWh)													
Participante de Mercado	Ene.	Feb.	Mar.	Abr.	May.	Jun.	Jul.	Ago.	Sep.	Oct.	Nov.	Dic.	Total
CECAM	0.4	1.9	0.3	2.3	1.4	1.2	0.2	0.6	3.0	2.0	0.0	0.1	13.3
CENERGICA	0.3	2.0	0.9	2.7	2.2	2.0		2.3	3.2	4.4	0.0		20.1
EXCELERGY	2.0	3.2	10.9	2.1	0.7	0.1	1.1	0.1	1.4	1.9	0.0	0.0	23.4
INE-COM									1.5	2.6			4.1
MERELEC	0.6	1.4	1.8	5.6	3.0	0.3	0.1	0.3	1.7	2.2			17.1
<b>Total</b>	<b>3.4</b>	<b>8.5</b>	<b>13.9</b>	<b>12.7</b>	<b>7.3</b>	<b>3.7</b>	<b>1.3</b>	<b>3.3</b>	<b>10.7</b>	<b>13.2</b>	<b>0.1</b>	<b>0.1</b>	<b>78.0</b>

Cuadro No. 7

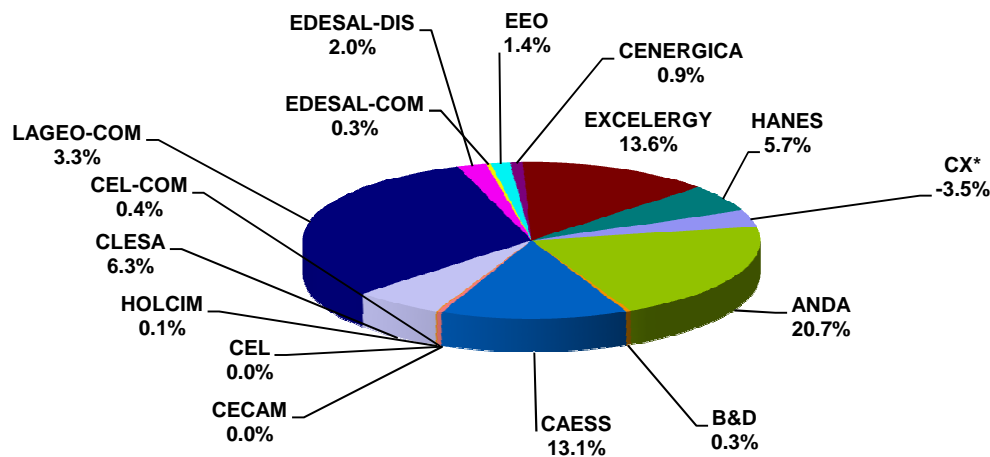
Transacciones por país						
Mes	Guatemala		Honduras		Total	
	Expor	Impor.	Expor	Impor.	Expor	Impor.
Ene	0.0	20.39	3.34	6.35	3.4	26.7
Feb	0.0	8.48	8.52	1.04	8.5	9.5
Mar	0.0	9.46	13.90	0.80	13.9	10.3
Abr	0.1	10.0	12.6	1.1	12.7	11.1
May	0.0	7.1	7.3	0.8	7.3	7.9
Jun	0.0	8.2	3.7	0.0	3.7	8.2
Jul	0.3	25.2	1.0	0.7	1.3	25.9
Ago	0.1	10.0	3.2	0.4	3.3	10.4
Sep	0.0	8.8	10.7	0.1	10.7	8.9
Oct	0.0	6.8	13.2	0.7	13.2	7.4
Nov	0.0	6.3	0.1	11.6	0.1	17.9
Dic	0.0	6.4	0.1	12.8	0.1	19.2
<b>Total</b>	<b>0.6</b>	<b>127.1</b>	<b>77.5</b>	<b>36.4</b>	<b>78.0</b>	<b>163.4</b>

## V- Demanda de energía en el Mercado de Contratos (Bilaterales)

Cuadro No. 8

Participante de Mercado	Contratos (GWh)												Total
	Ene.	Feb.	Mar.	Abr.	May.	Jun.	Jul.	Ago.	Sep.	Oct.	Nov.	Dic.	
ANDA	22.8	22.8	20.9	27.1	28.2	27.3			27.3	28.2	27.3	28.2	260.0
B&D									0.8	1.2	1.2	0.8	4.0
CAESS	18.8	15.5	14.1	12.2	12.6	12.2	12.6	9.9	12.1	14.9	14.4	15.8	165.2
CECAM					0.0						0.0		0.0
CEL													0.0
CEL-COM	0.3	0.3	0.3	0.3	0.3	0.4	0.4	0.4	0.4	0.4	0.4	0.4	4.5
HOLCIM	0.2	0.2	0.2	0.2	0.2	0.2	0.1						1.1
CLESA	6.7	6.3	6.7	6.5	6.7	6.5	6.7	6.7	6.4	6.6	6.4	6.6	78.9
DELSUR	33.6	31.4	33.6	32.5	33.6	32.2	33.6	34.2	32.6	34.1	33.2	34.3	398.8
EDESAL-DIS	1.1	1.1	1.1	1.1	1.1	1.1	1.1	2.7	3.7	3.9	3.8	3.9	25.5
EDESAL-COM								0.6	0.8	0.9	0.8	0.9	4.0
EEO	1.9	1.5	1.4	1.3	1.4	1.3	1.4	1.4	1.3	1.4	1.3	1.4	17.1
CENERGICA		2.3	0.8	0.7	1.6	1.5		2.1	0.6	1.5			11.1
EXCELERGY	12.2	11.4	23.0	11.8	12.2	11.8	12.2	20.0	16.5	12.5	13.5	14.1	171.3
HANES	5.6	6.2	6.4	6.4	6.2	6.3	6.6	6.2	5.4	6.5	5.7	4.0	71.6
CX*	-0.5	-2.6	-11.9	-1.0	-1.9	-1.7	-0.2	-9.4	-4.9	-2.4	-1.4	-6.1	-44.0
<b>Total</b>	<b>102.7</b>	<b>96.3</b>	<b>96.7</b>	<b>99.0</b>	<b>102.2</b>	<b>99.0</b>	<b>74.5</b>	<b>74.9</b>	<b>103.2</b>	<b>109.6</b>	<b>106.7</b>	<b>104.3</b>	<b>1,169.1</b>

Gráfico No. 5

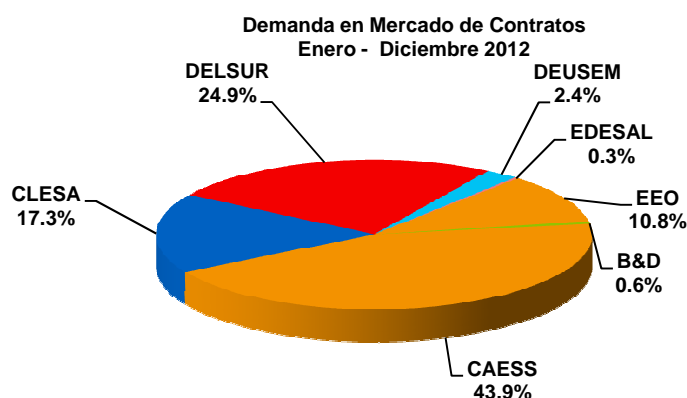
Demanda en Mercado de Contratos  
Enero - Diciembre 2012

## V- Demanda de energía en el Mercado de Contratos (Libre Concurrencia)

Cuadro No. 9

Participante de Mercado	Contratos (GWh)												Total
	Ene.	Feb.	Mar.	Abr.	May.	Jun.	Jul.	Ago.	Sep.	Oct.	Nov.	Dic.	
<b>B&amp;D</b>	1.4	1.6	1.7	0.8	1.3	1.5	1.6	1.5	1.6	1.7	1.6	1.2	<b>17.4</b>
<b>CAESS</b>	107.8	110.9	121.1	109.9	120.1	114.8	117.1	115.9	111.7	116.8	112.1	111.0	<b>1,369.3</b>
<b>CLESA</b>	42.3	45.1	48.7	45.7	47.5	43.8	44.6	44.4	42.3	44.6	44.4	45.6	<b>538.9</b>
<b>DELSUR</b>	63.0	64.1	65.9	65.3	67.0	63.5	66.5	65.3	63.8	65.7	63.0	62.6	<b>775.8</b>
<b>DEUSEM</b>	6.1	6.2	6.6	6.5	6.7	6.1	6.4	6.4	6.1	6.3	6.0	5.9	<b>75.4</b>
<b>EDESAL</b>	0.5	0.7	0.7	0.2	0.8	0.7	0.8	0.8	0.7	0.8	0.8	0.8	<b>8.2</b>
<b>EEO</b>	26.5	28.1	30.8	30.2	29.6	27.3	27.8	28.1	26.6	27.6	26.6	27.7	<b>336.9</b>
<b>Total</b>	<b>247.6</b>	<b>256.6</b>	<b>275.4</b>	<b>258.6</b>	<b>273.0</b>	<b>257.9</b>	<b>264.8</b>	<b>262.4</b>	<b>252.8</b>	<b>263.6</b>	<b>254.3</b>	<b>254.8</b>	<b>3,121.9</b>

Gráfico No. 6





## VI- Demanda de energía en el Mercado Regulador del Sistema

Cuadro No. 10

Participante de Mercado	MRS (GWh)												Total	
	Ene.	Feb.	Mar.	Abr.	May.	Jun.	Jul.	Ago.	Sep.	Oct.	Nov.	Dic.		
ABRUZZO-DIS	0.3													<b>0.3</b>
ABRUZZO-COM	0.1	0.0	0.0	0.0	0.0	0.0	0.0	0.0	0.0	0.0	0.0	0.0	0.0	<b>0.1</b>
AMPARK	3.5													<b>3.5</b>
ANDA	4.1	2.0	5.5	-3.5	-4.1	-3.2	25.0	24.9	-3.9	-2.1	-1.4	-1.5		<b>41.8</b>
B&D	0.6	0.5	0.6	1.3	1.3	0.9	1.0	0.9	0.3	-0.2	0.0	0.2		<b>7.2</b>
BOREALIS	0.0	0.0	0.0	0.0	0.0	0.0	0.0	0.0	0.0	0.0	0.0	0.0		<b>0.3</b>
CAESS	61.4	59.9	67.2	59.8	67.0	63.8	70.2	68.4	67.2	66.2	58.2	62.3		<b>771.6</b>
CASSA				0.0	0.1	0.4	0.4	0.4	0.4	0.5	0.1	0.0		<b>2.2</b>
CEL	0.3	0.3	0.3	0.3	0.2	0.2	0.3	0.3	0.1	0.1	0.3	0.4		<b>3.0</b>
CEL-COM	0.0	0.0	0.0	0.0	0.0	0.0	0.0	0.0	0.0	0.0	0.0	0.0		<b>0.0</b>
HOLCIM	1.8	1.9	0.4	0.7	0.7	1.4	1.5	3.0	4.0	2.9	1.9	1.6		<b>21.7</b>
CHAP	0.0	0.1	0.0	0.1	0.1	0.1	0.1	0.1	0.1	0.1	0.3	0.0		<b>1.0</b>
CLESA	25.4	21.2	22.3	19.4	19.4	20.6	21.5	21.3	22.6	24.3	22.2	20.6		<b>260.7</b>
CONS	0.7	0.7	0.7											<b>2.1</b>
DELSUR	9.6	14.6	18.2	10.0	17.9	16.4	16.2	9.8	12.3	14.1	14.6	15.5		<b>169.2</b>
DEUSEM	4.6	4.4	4.8	4.4	4.5	4.5	5.1	4.6	4.2	4.5	4.6	5.2		<b>55.4</b>
DUKE	0.2	0.1	0.2	0.1	0.2	0.3	0.3	0.3	0.3	0.4	0.3	0.3		<b>2.9</b>
EDESAL-DIS	0.6	0.4	0.3	2.3	3.1	3.2	2.5	0.6	0.3	0.3	-0.2	-1.1		<b>12.2</b>
EDESAL-COM	0.8	0.7	0.8	0.7	0.8	0.8	0.9	0.2	0.0	0.0	0.0	0.0		<b>5.6</b>
EEO	19.0	16.6	19.1	15.5	18.0	17.9	20.4	18.3	18.1	18.5	18.1	18.9		<b>218.2</b>
EL ANGEL	0.0	0.0												<b>0.0</b>
EXCELERGY	-0.3	0.0	0.0	-0.5	-0.1	0.0	0.1	-0.3	0.2	1.2	-0.1	0.0		<b>0.1</b>
GECSA	0.1	0.0	0.0	0.0	0.0	0.0	0.0	0.0	0.0	0.0	0.0	0.0		<b>0.5</b>
HANES	-0.3	-0.5	-0.9	-0.6	-0.8	-0.8	-0.9	-0.7	-0.6	-0.5	-0.5	-0.4		<b>-7.4</b>
HILCASA	0.0	0.0	0.0	0.0	0.0	0.0	0.0	0.0	0.0	0.0	0.0	0.0		<b>0.3</b>
IEL ANGEL		0.0	0.0	0.2	0.0						0.1	0.0		<b>0.3</b>
INE	0.0			0.0				0.0	0.1	0.0	0.0	0.0		<b>0.1</b>
LAGEO	0.8	0.8	0.9	0.9	1.0	0.7	1.0	0.7	0.9	0.8	0.8	0.9		<b>10.3</b>
MERELEC	0.0	0.0	0.0	0.0	0.0	0.0	0.0	0.0	0.0	0.0	0.0	0.0		<b>0.0</b>
NEPO	0.4	0.1	0.0	0.1	0.2	0.1	0.0	0.2	0.3	0.3	0.1	0.2		<b>2.0</b>
TEXT	0.4	0.5	0.6	0.5	0.5	0.5	0.6	0.7	0.5	0.5	0.7	0.7		<b>6.8</b>
<b>Total</b>	<b>134.2</b>	<b>124.4</b>	<b>141.0</b>	<b>111.8</b>	<b>130.0</b>	<b>127.7</b>	<b>166.2</b>	<b>153.7</b>	<b>127.3</b>	<b>131.9</b>	<b>120.1</b>	<b>123.7</b>	<b>1,592.0</b>	

Todos los valores negativos corresponden a las desviaciones de contratos que fueron inyectadas al MRS, superando el valor total de sus retiros.

## VII- Demanda total de energía en el Mercado Mayorista

Cuadro No. 11

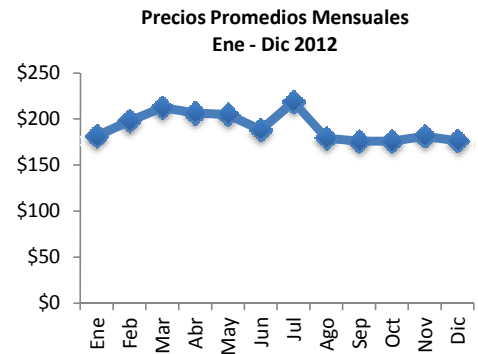
Participante de Mercado	Demanda Total de Energía (Contratos + MRS) GWh												
	Ene.	Feb.	Mar.	Abr.	May.	Jun.	Jul.	Ago.	Sep.	Oct.	Nov.	Dic.	Total
ABRUZZO-DIS	0.3												0.3
ABRUZZO-COM	0.1	0.0	0.0	0.0	0.0	0.0	0.0	0.0	0.0	0.0	0.0	0.0	0.1
AMPARK	3.5												3.5
ANDA	26.9	24.8	26.4	23.5	24.1	24.1	25.0	24.9	23.4	26.1	25.9	26.7	301.8
B&D	2.0	2.0	2.3	2.1	2.6	2.4	2.6	2.4	2.6	2.7	2.7	2.2	28.6
BOREALIS	0.0	0.0	0.0	0.0	0.0	0.0	0.0	0.0	0.0	0.0	0.0	0.0	0.3
CAESS	188.1	186.3	202.5	181.9	199.7	190.8	199.9	194.2	191.0	197.9	184.7	189.1	2,306.1
CASSA				0.0	0.1	0.4	0.4	0.4	0.4	0.5	0.1	0.0	2.2
CECAM													0.0
CEL	0.3	0.3	0.3	0.3	0.2	0.2	0.3	0.3	0.1	0.1	0.3	0.4	3.0
CEL-COM	0.3	0.3	0.3	0.3	0.3	0.4	0.4	0.4	0.4	0.4	0.4	0.4	4.5
HOLCIM	2.0	2.0	0.6	0.9	0.9	1.5	1.5	3.0	4.0	2.9	1.9	1.6	22.7
CHAP	0.0	0.1	0.0	0.1	0.1	0.1	0.1	0.1	0.1	0.1	0.3	0.0	1.0
CLESA	74.4	72.5	77.7	71.6	73.6	70.9	72.8	72.4	71.4	75.5	73.0	72.8	878.5
CONS	0.7	0.7	0.7										2.1
DELSUR	106.3	110.1	117.6	107.9	118.5	112.1	116.3	109.4	108.8	113.9	110.8	112.4	1,343.8
DEUSEM	10.7	10.6	11.4	10.9	11.2	10.6	11.5	11.0	10.3	10.8	10.6	11.1	130.8
DUKE	0.2	0.1	0.2	0.1	0.2	0.3	0.3	0.3	0.3	0.4	0.3	0.3	2.9
EDESAL-DIS	2.3	2.1	2.1	3.6	5.0	5.0	4.3	4.1	4.7	5.0	4.3	3.5	46.0
EDESAL-COM	0.8	0.7	0.8	0.7	0.8	0.8	0.9	0.9	0.8	0.9	0.8	0.9	9.6
EEO	47.4	46.2	51.2	47.0	49.0	46.5	49.7	47.7	46.1	47.4	46.0	48.0	572.2
EL ANGEL	0.0	0.0											0.0
CENERGICA													0.0
EXCELERGY	11.3	11.1	11.9	11.0	11.8	11.5	12.2	12.4	12.5	12.7	12.0	8.0	138.4
GECSA	0.1	0.0	0.0	0.0	0.0	0.0	0.0	0.0	0.0	0.0	0.0	0.0	0.5
HANES	5.4	5.8	5.5	5.8	5.4	5.5	5.8	5.6	4.8	6.0	5.2	3.6	64.2
HILCASA	0.0	0.0	0.0	0.0	0.0	0.0	0.0	0.0	0.0	0.0	0.0	0.0	0.3
IEL ANGEL		0.0	0.0	0.2	0.0						0.1	0.0	0.3
INE	0.0			0.0				0.0	0.1	0.0	0.0	0.0	0.1
INE-COM													0.0
LAGEO	0.8	0.8	0.9	0.9	1.0	0.7	1.0	0.7	0.9	0.8	0.8	0.9	10.3
MERELEC	0.0	0.0	0.0	0.0	0.0	0.0	0.0	0.0	0.0	0.0	0.0	0.0	0.0
NEPO	0.4	0.1	0.0	0.1	0.2	0.1	0.0	0.2	0.3	0.3	0.1	0.2	2.0
TEXT	0.4	0.5	0.6	0.5	0.5	0.5	0.6	0.7	0.5	0.5	0.7	0.7	6.8
<b>Total</b>	<b>484.6</b>	<b>477.3</b>	<b>513.1</b>	<b>469.4</b>	<b>505.2</b>	<b>484.5</b>	<b>505.6</b>	<b>491.1</b>	<b>483.4</b>	<b>505.0</b>	<b>481.1</b>	<b>482.8</b>	<b>5,883.1</b>

VIII- Evolución de los precios en el MRS

Cuadro No. 12

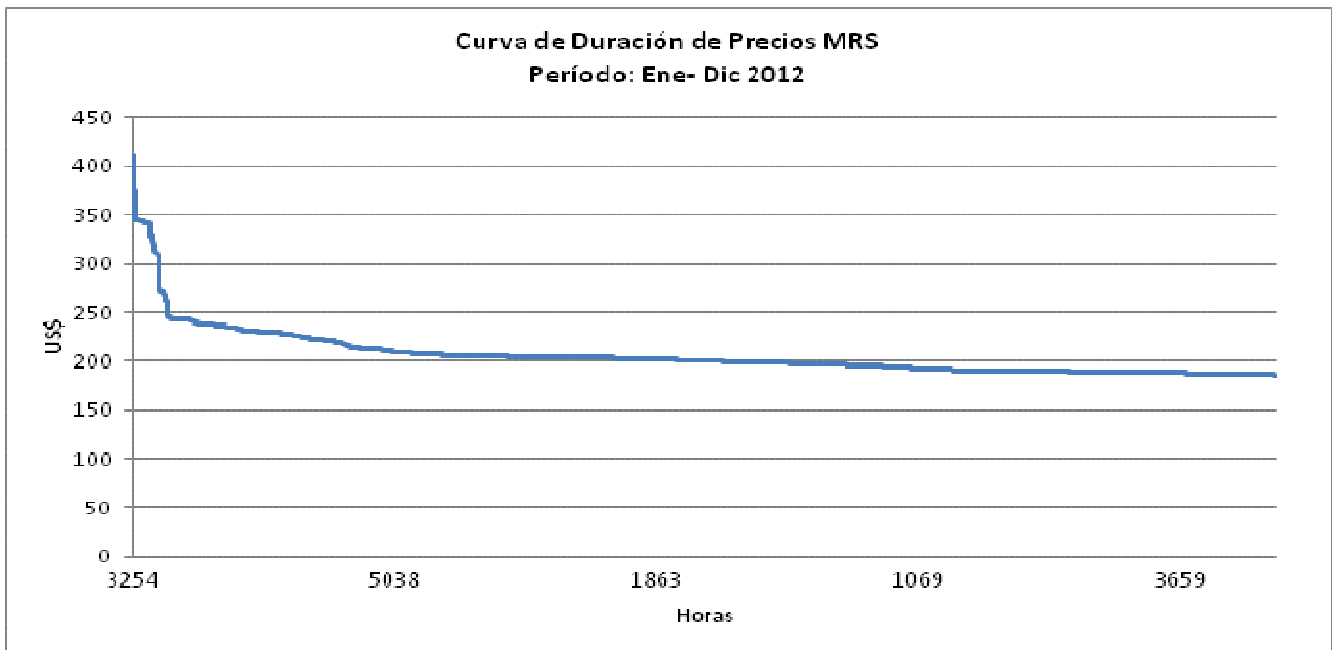
Mes	Promedio	Variaciones %			
		Mensual	Anual	Acumulada	Prom. Anual
Ene	181.41	-0.41	26.39	-0.41	169.4
Feb	198.01	9.15	24.01	8.70	172.6
Mar	212.32	7.23	38.53	16.56	177.5
Abr	206.50	-2.74	22.12	13.36	180.6
May	204.86	-0.80	9.74	12.46	182.1
Jun	188.22	-8.12	-0.17	3.33	182.1
Jul	218.70	16.19	35.86	20.06	186.9
Ago	179.23	-18.05	7.90	-1.61	188.0
Sep	175.94	-1.84	11.24	-3.42	189.5
Oct	175.99	0.03	22.83	-3.39	192.2
Nov	181.34	3.04	-1.11	-0.45	192.1
Dic	176.50	-2.67	-3.11	-3.11	191.6

Gráfico No. 7



Nota: a partir del 1 de Agosto de 2011 el precio de la energía ha sido calculado con base a lo establecido en el Reglamento de Operación Basado en Costos de Producción (ROBCP)

Gráfico No. 8



## IX- Comercializadores

Cuadro No. 13 - A

Participante de Mercado	Inyecciones (GWh)												Total
	Ene	Feb	Mar	Abr	May	Jun	Jul	Ago	Sep	Oct	Nov	Dic	
BOREALIS	0.2	0.4	0.8	0.3	1.0	1.2	3.7	0.4	0.2	0.1	0.1	0.0	8.3
CECAM	2.7	1.3	1.6	2.0	1.1	0.6	3.0	0.4	0.1	0.3	2.5	1.9	17.5
CENER	0.7	0.1	0.0				0.7	0.0	0.3	0.1			1.8
CHAP	3.7	3.0	3.4	2.6	0.8					0.0	1.9	4.0	19.4
DUKE (COM)	7.4	1.3	1.8	2.8	0.5	1.4	8.5	0.6	0.1				24.4
EL ANGEL	6.9	3.8											10.7
EL PASO	1.0	0.0	0.1		0.0	0.1	1.3	0.8	0.3		1.7	2.9	8.2
ENERSICA												0.2	0.2
EXCELERGY	1.6		0.0	0.2	0.0		0.7	0.2			0.6	3.4	6.8
GECSA	0.2	0.8	1.5	0.4	0.7	0.8	3.7	0.7	0.2	0.1	0.1	0.0	9.2
HILCASA	1.9	2.2	1.7	0.9	1.6	0.9	2.7	1.0	1.0	0.2	0.1	0.1	14.2
INE (COM)	6.0	5.7	6.1	6.0	6.2	6.0	6.2	6.1	6.0	6.2	6.0	6.2	72.7
LA CABAÑA	2.9	2.6	2.7	3.0	1.1						2.6	2.7	17.6
MERELEC	6.8	1.0	0.4	0.1	0.1	0.0	5.2	0.9	1.1	0.4	6.0	4.6	26.7
ORIGEM	0.6										0.9	0.1	1.6
SAN DIEGO												0.0	0.0
TEXT	13.7	19.8	21.1	16.9	18.5	17.4	20.7	21.3	14.2	15.4	23.3	22.1	224.4
<b>Total</b>	<b>56.2</b>	<b>42.1</b>	<b>41.5</b>	<b>35.2</b>	<b>31.6</b>	<b>28.5</b>	<b>56.3</b>	<b>32.3</b>	<b>23.3</b>	<b>22.8</b>	<b>45.8</b>	<b>48.1</b>	<b>463.8</b>

## IX- Comercializadores

Cuadro No. 13 - B

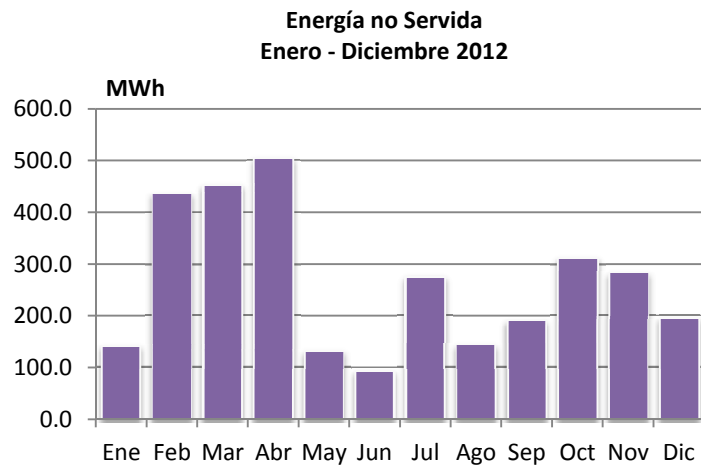
Participante de Mercado	Retiros (GWh)												Total
	Ene	Feb	Mar	Abr	May	Jun	Jul	Ago	Sep	Oct	Nov	Dic	
ABRUZZO	0.1	0.0	0.0	0.0	0.0	0.0	0.0	0.0	0.0	0.0	0.0	0.0	0.1
AMPARK	3.5												3.5
BOREALIS	0.0	0.0	0.0	0.0	0.0	0.0	0.0	0.0	0.0	0.0	0.0	0.0	0.3
CECAM	0.4	1.9	0.3	2.3	1.4	1.2	0.2	0.6	3.0	2.0	0.0	0.1	13.3
CEL (COM)	0.3	0.3	0.3	0.3	0.3	0.4	0.4	0.4	0.4	0.4	0.4	0.4	4.5
CHAP	0.0	0.1	0.0	0.1	0.1	0.1	0.1	0.1	0.1	0.1	0.3	0.0	1.0
EDESAL (COM)	0.8	0.7	0.8	0.7	0.8	0.8	0.9	0.9	0.8	0.9	0.8	0.9	9.6
EL ANGEL	0.0	0.0											0.0
EL PASO	0.3	2.0	0.9	2.7	2.2	2.0		2.3	3.2	4.4	0.0		20.1
EXCELERGY	13.4	14.3	22.7	13.1	12.6	11.6	13.2	12.5	13.8	14.6	12.0	8.0	161.9
GECSA	0.1	0.0	0.0	0.0	0.0	0.0	0.0	0.0	0.0	0.0	0.0	0.0	0.5
HILCASA	0.0	0.0	0.0	0.0	0.0	0.0	0.0	0.0	0.0	0.0	0.0	0.0	0.3
INE (COM)									1.5	2.6			4.1
MERELEC	0.6	1.4	1.9	5.6	3.0	0.3	0.1	0.3	1.7	2.2	0.0	0.0	17.2
TEXT	0.4	0.5	0.6	0.5	0.5	0.5	0.6	0.7	0.5	0.5	0.7	0.7	6.8
<b>Total</b>	<b>19.9</b>	<b>21.4</b>	<b>27.6</b>	<b>25.3</b>	<b>20.9</b>	<b>17.1</b>	<b>15.5</b>	<b>17.8</b>	<b>25.0</b>	<b>27.9</b>	<b>14.4</b>	<b>10.1</b>	<b>243.1</b>

X- Energía no servida y Pérdidas de transmisión

Cuadro No. 14

Energía no Servida		
Mes	MWh	% Var. Mensual
Ene	141.6	0.0%
Feb	436.1	208.0%
Mar	452.7	3.8%
Abr	504.8	11.5%
May	132.4	-73.8%
Jun	93.2	-29.6%
Jul	275.2	195.3%
Ago	143.5	-47.9%
Sep	190.4	32.7%
Oct	312.3	64.0%
Nov	282.8	-9.5%
Dic	195.9	-30.7%
<b>Total</b>	<b>3,160.8</b>	

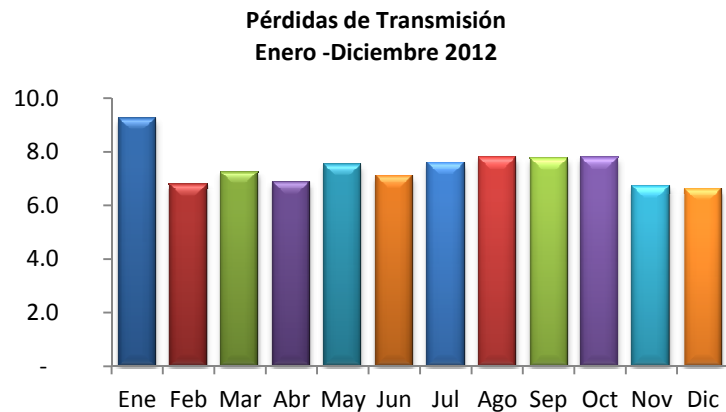
Gráfico No. 9



Cuadro No. 15

Pérdida de Trasmisión		
Mes	GWh	% Var. Mensual
Ene	9.2	0.0%
Feb	6.8	-26.8%
Mar	7.3	7.2%
Abr	6.9	-5.2%
May	7.5	9.7%
Jun	7.1	-6.2%
Jul	7.6	7.4%
Ago	7.8	2.5%
Sep	7.7	-0.6%
Oct	7.8	0.6%
Nov	6.7	-13.9%
Dic	6.6	-1.0%

Gráfico No. 10





## XI- Retiro de energía por nodo en la red de transmisión

Cuadro No. 16

Participante de Mercado	Subestaciones	Retiros por nodo (GWh)												Total		
		Ene	Feb	Mar	Abr	May	Jun	Jul	Ago	Sep	Oct	Nov	Dic			
Origem	Cerrón Grande	0.0	0.0	0.0	0.0	0.0	0.0	0.0	0.0	0.0	0.0	0.0	0.0	0.0	0.0	0.0
	Nuevo Cuscatlán	0.0	0.0	0.0	0.0	0.0	0.0	0.0	0.0	0.0	0.0	0.0	0.0	0.0	0.0	0.0
	Nejapa	0.0	0.0	0.0	0.0	0.0	0.0	0.0	0.0	0.0	0.0	0.0	0.0	0.0	0.0	0.0
	Pedregal	0.0	0.0	0.0	0.0	0.0	0.0	0.0	0.0	0.0	0.0	0.0	0.0	0.0	0.0	0.0
	San Antonio	0.0	0.0	0.0	0.0	0.0	0.0	0.0	0.0	0.0	0.0	0.0	0.0	0.0	0.0	0.0
	San Bartolo	0.0	0.0	0.0	0.0	0.0	0.0	0.0	0.0	0.0	0.0	0.0	0.0	0.0	0.0	0.0
	Soyapango	0.0	0.0	0.0	0.0	0.0	0.0	0.0	0.0	0.0	0.0	0.0	0.0	0.0	0.0	0.0
	San Rafael	0.0	0.0	0.0	0.0	0.0	0.0	0.0	0.0	0.0	0.0	0.0	0.0	0.0	0.0	0.0
	Santo Tomás	0.0	0.0	0.0	0.0	0.0	0.0	0.0	0.0	0.0	0.0	0.0	0.0	0.0	0.0	0.0
	Tecoluca	0.0	0.0	0.0	0.0	0.0	0.0	0.0	0.0	0.0	0.0	0.0	0.0	0.0	0.0	0.0
	<b>Sub-Total</b>	<b>0.0</b>	<b>0.0</b>	<b>0.0</b>	<b>0.0</b>	<b>0.0</b>	<b>0.0</b>	<b>0.0</b>	<b>0.0</b>	<b>0.0</b>	<b>0.0</b>	<b>0.0</b>	<b>0.0</b>	<b>0.0</b>	<b>0.0</b>	<b>0.0</b>
LYNX	Nuevo Cuscatlán	0.0	0.0	0.0	0.0	0.0	0.0	0.0	0.0	0.0	0.0	0.0	0.0	0.0	0.0	0.0
	Nejapa	0.0	0.0	0.0	0.0	0.0	0.0	0.0	0.0	0.0	0.0	0.0	0.0	0.0	0.0	0.0
	San Bartolo	0.0	0.0	0.0	0.0	0.0	0.0	0.0	0.0	0.0	0.0	0.0	0.0	0.0	0.0	0.0
	Soyapango	0.0	0.0	0.0	0.0	0.0	0.0	0.0	0.0	0.0	0.0	0.0	0.0	0.0	0.0	0.0
	<b>Sub-Total</b>	<b>0.0</b>	<b>0.0</b>	<b>0.0</b>	<b>0.0</b>	<b>0.0</b>	<b>0.0</b>	<b>0.0</b>	<b>0.0</b>	<b>0.0</b>	<b>0.0</b>	<b>0.0</b>	<b>0.0</b>	<b>0.0</b>	<b>0.0</b>	<b>0.0</b>
Textufil	Soyapango	0.0	0.0	0.0	0.0	0.0	0.0	0.0	0.0	0.0	0.0	0.0	0.0	0.0	0.0	0.2
	Soyapango	0.4	0.5	0.6	0.5	0.5	0.5	0.6	0.6	0.5	0.5	0.7	0.7	0.7	0.6	6.6
	<b>Sub-Total</b>	<b>0.4</b>	<b>0.5</b>	<b>0.6</b>	<b>0.5</b>	<b>0.5</b>	<b>0.5</b>	<b>0.6</b>	<b>0.7</b>	<b>0.5</b>	<b>0.5</b>	<b>0.7</b>	<b>0.7</b>	<b>0.7</b>	<b>0.7</b>	<b>6.8</b>
Abruzzo	Nuevo Cuscatlán	0.1	0.0	0.0	0.0	0.0	0.0	0.0	0.0	0.0	0.0	0.0	0.0	0.0	0.0	0.1
	Nejapa	0.0	0.0	0.0	0.0	0.0	0.0	0.0	0.0	0.0	0.0	0.0	0.0	0.0	0.0	0.0
	El Pedregal	0.0	0.0	0.0	0.0	0.0	0.0	0.0	0.0	0.0	0.0	0.0	0.0	0.0	0.0	0.0
	Santa Ana	0.0	0.0	0.0	0.0	0.0	0.0	0.0	0.0	0.0	0.0	0.0	0.0	0.0	0.0	0.0
	San Antonio	0.0	0.0	0.0	0.0	0.0	0.0	0.0	0.0	0.0	0.0	0.0	0.0	0.0	0.0	0.0
	<b>Sub-Total</b>	<b>0.1</b>	<b>0.0</b>	<b>0.0</b>	<b>0.0</b>	<b>0.0</b>	<b>0.0</b>	<b>0.0</b>	<b>0.0</b>	<b>0.0</b>	<b>0.0</b>	<b>0.0</b>	<b>0.0</b>	<b>0.0</b>	<b>0.0</b>	<b>0.1</b>
Edesal-Com	Ateos	0.0	0.0	0.0	0.0	0.0	0.0	0.0	0.0	0.0	0.0	0.0	0.0	0.0	0.0	0.1
	Santa Ana	0.6	0.6	0.6	0.6	0.6	0.6	0.6	0.7	0.7	0.7	0.7	0.7	0.7	0.7	7.8
	San Miguel	0.1	0.1	0.1	0.1	0.1	0.1	0.1	0.1	0.1	0.1	0.1	0.1	0.1	0.1	1.3
	San Bartolo	0.0	0.0	0.0	0.0	0.0	0.0	0.0	0.0	0.0	0.0	0.0	0.0	0.0	0.0	0.4
	Nejapa	0.0	0.0	0.0	0.0	0.0	0.0	0.0	0.0	0.0	0.0	0.0	0.0	0.0	0.0	0.0
	<b>Sub-Total</b>	<b>0.8</b>	<b>0.7</b>	<b>0.8</b>	<b>0.7</b>	<b>0.8</b>	<b>0.8</b>	<b>0.9</b>	<b>0.9</b>	<b>0.8</b>	<b>0.9</b>	<b>0.8</b>	<b>0.9</b>	<b>0.8</b>	<b>0.9</b>	<b>9.6</b>
Borealis	Borealis	0.0	0.0	0.0	0.0	0.0	0.0	0.0	0.0	0.0	0.0	0.0	0.0	0.0	0.0	0.3
	Opico	0.0	0.0	0.0	0.0	0.0	0.0	0.0	0.0	0.0	0.0	0.0	0.0	0.0	0.0	0.0
	<b>Sub-Total</b>	<b>0.0</b>	<b>0.0</b>	<b>0.0</b>	<b>0.0</b>	<b>0.0</b>	<b>0.0</b>	<b>0.0</b>	<b>0.0</b>	<b>0.0</b>	<b>0.0</b>	<b>0.0</b>	<b>0.0</b>	<b>0.0</b>	<b>0.0</b>	<b>0.3</b>
Gecsa	Gecsa	0.1	0.0	0.0	0.0	0.0	0.0	0.0	0.0	0.0	0.0	0.0	0.0	0.0	0.0	0.5
	<b>Sub-Total</b>	<b>0.1</b>	<b>0.0</b>	<b>0.0</b>	<b>0.0</b>	<b>0.0</b>	<b>0.0</b>	<b>0.0</b>	<b>0.0</b>	<b>0.0</b>	<b>0.0</b>	<b>0.0</b>	<b>0.0</b>	<b>0.0</b>	<b>0.0</b>	<b>0.5</b>
Hilcasa	Hilcasa	0.0	0.0	0.0	0.0	0.0	0.0	0.0	0.0	0.0	0.0	0.0	0.0	0.0	0.0	0.3
	<b>Sub-Total</b>	<b>0.0</b>	<b>0.0</b>	<b>0.0</b>	<b>0.0</b>	<b>0.0</b>	<b>0.0</b>	<b>0.0</b>	<b>0.0</b>	<b>0.0</b>	<b>0.0</b>	<b>0.0</b>	<b>0.0</b>	<b>0.0</b>	<b>0.0</b>	<b>0.3</b>
Chap	Chaparrastique	0.0	0.1	0.0	0.1	0.1	0.1	0.1	0.1	0.1	0.1	0.1	0.1	0.3	0.0	1.0
	<b>Sub-Total</b>	<b>0.0</b>	<b>0.1</b>	<b>0.0</b>	<b>0.1</b>	<b>0.1</b>	<b>0.1</b>	<b>0.1</b>	<b>0.1</b>	<b>0.1</b>	<b>0.1</b>	<b>0.1</b>	<b>0.1</b>	<b>0.3</b>	<b>0.0</b>	<b>1.0</b>
Cel	15 de Septiembre	0.2	0.2	0.2	0.1	0.1	0.1	0.1	0.1	0.1	0.0	0.0	0.1	0.2	1.3	
	5 de Noviembre	0.0	0.0	0.0	0.0	0.0	0.0	0.0	0.1	0.1	0.0	0.0	0.1	0.1	0.4	
	Cerrón Grande	0.1	0.1	0.1	0.1	0.1	0.1	0.1	0.1	0.1	0.1	0.0	0.1	0.1	1.1	
	Guajoyo	0.0	0.0	0.0	0.0	0.0	0.0	0.0	0.0	0.0	0.0	0.0	0.0	0.0	0.2	
	<b>Sub-Total</b>	<b>0.3</b>	<b>0.3</b>	<b>0.3</b>	<b>0.3</b>	<b>0.2</b>	<b>0.2</b>	<b>0.3</b>	<b>0.3</b>	<b>0.3</b>	<b>0.1</b>	<b>0.1</b>	<b>0.3</b>	<b>0.4</b>	<b>3.0</b>	
Nejapa	Nejapa	0.4	0.1	0.0	0.1	0.2	0.1	0.0	0.2	0.3	0.3	0.3	0.1	0.2	2.0	
	<b>Sub-Total</b>	<b>0.4</b>	<b>0.1</b>	<b>0.0</b>	<b>0.1</b>	<b>0.2</b>	<b>0.1</b>	<b>0.0</b>	<b>0.2</b>	<b>0.3</b>	<b>0.3</b>	<b>0.3</b>	<b>0.1</b>	<b>0.2</b>	<b>2.0</b>	
Duke	Acajutla	0.1	0.1	0.2	0.1	0.1	0.2	0.2	0.2	0.3	0.3	0.2	0.2	0.2	2.2	
	Soyapango	0.0	0.0	0.0	0.0	0.1	0.1	0.1	0.1	0.1	0.0	0.1	0.1	0.1	0.7	
	<b>Sub-Total</b>	<b>0.2</b>	<b>0.1</b>	<b>0.2</b>	<b>0.1</b>	<b>0.2</b>	<b>0.3</b>	<b>0.3</b>	<b>0.3</b>	<b>0.3</b>	<b>0.4</b>	<b>0.3</b>	<b>0.3</b>	<b>0.3</b>	<b>2.9</b>	
LaGeo	Ahuachapán	0.8	0.8	0.9	0.9	0.9	0.9	0.7	0.9	0.7	0.7	0.8	0.8	0.9	9.8	
	Berlín	0.0	0.0	0.0	0.0	0.1	0.0	0.1	0.0	0.1	0.0	0.0	0.0	0.0	0.5	
	<b>Sub-Total</b>	<b>0.8</b>	<b>0.8</b>	<b>0.9</b>	<b>0.9</b>	<b>1.0</b>	<b>0.7</b>	<b>1.0</b>	<b>0.7</b>	<b>0.9</b>	<b>0.8</b>	<b>0.8</b>	<b>0.8</b>	<b>0.9</b>	<b>10.3</b>	
Holcim	Ateos	0.0	0.0	0.0	0.0	0.0	0.0	0.0	0.0	0.0	0.0	0.0	0.0	0.0	0.1	
	Guajoyo	1.9	1.9	0.5	0.8	0.7	1.4	1.4	3.0	4.0	2.9	1.9	1.6	1.6	21.9	
	Nuevo Cuscatlán	0.1	0.1	0.1	0.1	0.1	0.1	0.1	0.0	0.0	0.0	0.0	0.0	0.0	0.4	
	Opico	0.0	0.0	0.0	0.0	0.0	0.0	0.0	0.0	0.0	0.0	0.0	0.0	0.0	0.1	
	El Pedregal	0.0	0.0	0.0	0.0	0.0	0.0	0.0	0.0	0.0	0.0	0.0	0.0	0.0	0.3	
	<b>Sub-Total</b>	<b>2.0</b>	<b>2.0</b>	<b>0.6</b>	<b>0.9</b>	<b>0.9</b>	<b>1.5</b>	<b>1.5</b>	<b>3.0</b>	<b>4.0</b>	<b>2.9</b>	<b>1.9</b>	<b>1.6</b>	<b>1.6</b>	<b>22.7</b>	
Cassa	Sonsonate	0.0	0.0	0.0	0.0	0.1	0.4	0.4	0.4	0.4	0.5	0.1	0.0	0.0	2.2	
	<b>Sub-Total</b>	<b>0.0</b>	<b>0.0</b>	<b>0.0</b>	<b>0.0</b>	<b>0.1</b>	<b>0.4</b>	<b>0.4</b>	<b>0.4</b>	<b>0.4</b>	<b>0.5</b>	<b>0.1</b>	<b>0.0</b>	<b>0.0</b>	<b>2.2</b>	
INE	Talnique	0.0	0.0	0.0	0.0	0.0	0.0	0.0	0.0	0.0	0.1	0.0	0.0	0.0	0.1	
	<b>Sub-Total</b>	<b>0.0</b>	<b>0.0</b>	<b>0.0</b>	<b>0.0</b>	<b>0.0</b>	<b>0.0</b>	<b>0.0</b>	<b>0.0</b>	<b>0.0</b>	<b>0.1</b>	<b>0.0</b>	<b>0.0</b>	<b>0.0</b>	<b>0.1</b>	
El Angel	El angel	0.0	0.0	0.0	0.2	0.0	0.0	0.0	0.0	0.0	0.0	0.0	0.1	0.0	0.3	
	<b>Sub-Total</b>	<b>0.0</b>	<b>0.0</b>	<b>0.0</b>	<b>0.2</b>	<b>0.0</b>	<b>0.0</b>	<b>0.0</b>	<b>0.0</b>	<b>0.0</b>	<b>0.0</b>	<b>0.0</b>	<b>0.1</b>	<b>0.0</b>	<b>0.3</b>	
Invinter	Sicepasa	0.0	0.0	0.0	0.0	0.0	0.0	0.0	0.0	0.0	0.0	0.0	0.0	0.0	0.0	
	<b>Sub-Total</b>	<b>0.0</b>	<b>0.0</b>	<b>0.0</b>	<b>0.0</b>	<b>0.0</b>	<b>0.0</b>	<b>0.0</b>	<b>0.0</b>	<b>0.0</b>	<b>0.0</b>	<b>0.0</b>	<b>0.0</b>	<b>0.0</b>	<b>0.0</b>	
ANDA	Nejapa	20.1	18.4	19.8	17.8	18.1	18.0	18.7	19.0	18.0	19.8	19.5	20.0	22.3	227.3	
	Santa Ana	6.7	6.3	6.6	5.7	5.9	6.0	6.3	5.8	5.3	6.3	6.4	6.7	7.4	74.1	
	San Miguel	0.0	0.0	0.0	0.0	0.0	0.0	0.0	0.0	0.0	0.0	0.0	0.0	0.0	0.4	
	<b>Sub-Total</b>	<b>26.9</b>	<b>24.8</b>	<b>26.4</b>	<b>23.5</b>	<b>24.1</b>	<b>24.1</b>	<b>25.0</b>	<b>24.9</b>	<b>23.4</b>	<b>26.1</b>	<b>25.9</b>	<b>26.7</b>	<b>30.8</b>	<b>301.8</b>	
Consorcio	Acajutla	0.7	0.7	0.7	0.0	0.0	0.0	0.0	0.0	0.0	0.0	0.0	0.0	0.0	2.1	
	<b>Sub-Total</b>	<b>0.7</b>	<b>0.7</b>	<b>0.7</b>	<b>0.0</b>	<b>0.0</b>	<b>0.0</b>	<b>0.0</b>	<b>0.0</b>	<b>0.0</b>	<b>0.0</b>	<b>0.0</b>	<b>0.0</b>	<b>0.0</b>	<b>2.1</b>	
Ing. El Angel	El Angel	0.0	0.0	0.0	0.0	0.0	0.0	0.0	0.0	0.0	0.0	0.0	0.0	0.0	0.0	
	<b>Sub-Total</b>	<b>0.0</b>	<b>0.0</b>	<b>0.0</b>	<b>0.0</b>	<b>0.0</b>	<b>0.0</b>	<b>0.0</b>	<b>0.0</b>	<b>0.0</b>	<b>0.0</b>	<b>0.0</b>	<b>0.0</b>	<b>0.0</b>	<b>0.0</b>	
Hanesbrands	Opico	5.4	5.8	5.5	5.8	5.4	5.5	5.8	5.6	4.8	6.0	5.2	3.6	3.6	64.2	
	<b>Sub-Total</b>	<b>5.4</b>	<b>5.8</b>	<b>5.5</b>	<b>5.8</b>	<b>5.4</b>	<b>5.5</b>	<b>5.8</b>	<b>5.6</b>	<b>4.8</b>	<b>6.</b>					



## XII- Interrupciones de servicio

Cuadro No. 17

Número de circuitos interrumpidos por nivel de voltaje													
Voltaje	Ene.	Feb.	Mar.	Abr.	May.	Jun.	Jul.	Ago.	Sep.	Oct.	Nov.	Dic.	Total
Circuitos de 23 kV	7	3	6	16	5	11	7	13	16	12	13	16	125
Circuitos de 34.5 kV	14	7	0	5	22	11	19	11	19	6	10	7	131
Circuitos de 46 kV	72	78	103	124	193	125	146	165	182	123	66	80	1,457
Líneas de 115 kV	15	9	14	17	21	15	16	24	41	31	17	8	228
Línea de interconexión	27	17	28	28	13	12	37	65	21	17	33	44	342
<b>Total</b>	<b>135</b>	<b>114</b>	<b>151</b>	<b>190</b>	<b>254</b>	<b>174</b>	<b>225</b>	<b>278</b>	<b>279</b>	<b>189</b>	<b>139</b>	<b>155</b>	<b>2,283</b>

Cuadro No. 18

Número de interrupciones por motivo													
Voltaje	Ene.	Feb.	Mar.	Abr.	May.	Jun.	Jul.	Ago.	Sep.	Oct.	Nov.	Dic.	Total
Falla en líneas de transmisión	14	2	4	4	11	6	17	15	20	10	3	6	112
Mantenimiento en líneas de transmisión	1	7	15	18	13	10	15	18	26	27	22	29	201
Falla en circuitos de distribución	57	49	73	97	175	113	149	164	165	103	62	59	1,266
Mantenimiento de líneas de distribución	36	39	36	48	45	34	23	25	52	38	27	44	447
Fallas en líneas de Interconexión(*)	9	10	10	14	7	7	11	42	14	10	20	12	166
Mantenimientos o por solicitud de las Líneas de Interconexión (*)	9	4	5	7	3	2	10	12	2	1	5	4	64
Actuación de EDLI	6	3	8	2	0	2	0	2	0	0	0	1	24
Operación del ECS con Disparo Transferido a Guatemala	3	0	0	0	0	0	0	0	0	0	0	0	3
<b>Total</b>	<b>132</b>	<b>114</b>	<b>151</b>	<b>190</b>	<b>254</b>	<b>174</b>	<b>225</b>	<b>278</b>	<b>279</b>	<b>189</b>	<b>139</b>	<b>155</b>	<b>2,283</b>

(\*) NOTA: Interconexiones con Guatemala y Honduras

Cuadro No. 19

Interrupciones de circuitos por responsable													
Responsable	Ene.	Feb.	Mar.	Abr.	May.	Jun.	Jul.	Ago.	Sep.	Oct.	Nov.	Dic.	Total
ABRUZZO	1												1
ANDA	1		8	9	4	7	3	4	2	3		1	42
B&D						2	1	2	2	2	2		11
CAESS	4	4	7	7	14	5	14	21	11	9	3	4	103
CASSA						2	1		2	1			6
HOLCIM	9	1		1	9	1	2	5		2		1	31
CLESA	34	26	18	22	48	30	58	35	43	35	17	15	381
DELSUR	10	17	28	38	68	24	41	62	39	24	24	34	409
EEO	11	27	22	39	54	60	25	44		41	16	18	357
EOR							3	4	93				100
DEUSEM		3		3	1	2	7	2	4	2	1		25
EDESAL	2		2	3	6	3	8	7	4	1	7	1	44
ETESAL	38	17	31	32	38	25	28	30	49	50	39	35	412
NEJAPA				3									3
HANES	1	2	3			1		2	2	1	1	3	16
ING. EL ANGEL					1				1	1	1		4
UT	1		6	2	2		11	8	6	6	7	24	73
LAGEO									2				2
GUATEMALA	2		6	3	1	2	8	36	12	4	12	11	97
HONDURAS	8	4	3	4	7	8	3	4	1	1	3	2	48
NICARAGUA	2		2	1									5
COSTA RICA	2												2
PANAMA	1		2	13			3	2	3				24
EPR	8	13	13	10	1	2	9	10	3	6	6	6	87
GECSA													
<b>Total</b>	<b>135</b>	<b>114</b>	<b>151</b>	<b>190</b>	<b>254</b>	<b>174</b>	<b>225</b>	<b>278</b>	<b>279</b>	<b>189</b>	<b>139</b>	<b>155</b>	<b>2,283</b>

XIII- Límites de voltaje

Cuadro No. 20

ENTREGAS A 34.5 Kv																	
VOLTAJES	SUBESTACION																
	ACAJUTLA						ATEOS										
	DEMANDA						DEMANDA										
	max	med	min	max	med	min	max	med	min	max	med	min	max	med	min	max	med
>1.05	0	0	0	0	0	0	0	0	0	0	0	0	0	0	0	0	0
<0.95	0	0	0	0	0	0	0	0	0	0	0	0	0	0	0	0	0

ENTREGAS A 23 Kv																	
VOLTAJES	SUBESTACION																
	NVO. CUSCATLAN			SAN BARTOLO			NEJAPA			SAN ANTONIO			SOYAPANGO				
	DEMANDA			DEMANDA			DEMANDA			DEMANDA			DEMANDA				
	max	med	min	max	med	min	max	med	min	max	med	min	max	med	min	max	med
>1.05	8	121	251	0	0	0	0	0	0	0	0	0	0	0	34	80	0
<0.95	0	0	0	0	0	0	0	0	0	0	0	0	0	0	0	0	0

ENTREGAS A 46 Kv																	
VOLTAJES	SUBESTACION																
	SONSONATE			SANTO TOMAS			OPICO			SOYAPANGO			ATEOS				
	DEMANDA			DEMANDA			DEMANDA			DEMANDA			DEMANDA				
	max	med	min	max	med	min	max	med	min	max	med	min	max	med	min	max	med
>1.05	0	0	0	0	0	0	0	0	0	0	20	83	0	0	0	0	0
<0.95	0	0	0	0	0	0	0	0	0	0	0	0	0	0	0	0	0

VOLTAJES	SUBESTACION																
	SAN MIGUEL			TECOLUCA			15 DE SEPT.			S. R. CEDROS			CERRON GRANDE				
	DEMANDA			DEMANDA			DEMANDA			DEMANDA			DEMANDA				
	max	med	min	max	med	min	max	med	min	max	med	min	max	med	min	max	med
>1.05	0	0	0	0	0	0	0	0	0	0	0	0	0	0	1	0	0
<0.95	0	0	0	0	0	0	0	0	0	0	0	0	0	0	0	0	0

VOLTAJES	SUBESTACION																
	GUAJOYO			SANTA ANA			AHUACHAPAN			ACAJUTLA			OZATLAN				
	DEMANDA			DEMANDA			DEMANDA			DEMANDA			DEMANDA				
	max	med	min	max	med	min	max	med	min	max	med	min	max	med	min	max	med
>1.05	0	0	0	0	0	0	1	0	0	0	0	0	0	0	0	0	0
<0.95	0	0	0	0	0	0	0	0	0	0	0	0	0	0	0	0	0

VOLTAJES	SUBESTACION					
	PEDREGAL			LA UNION		
	DEMANDA			DEMANDA		
	max	med	min	max	med	min
>1.05	0	0	0	0	0	0
<0.95	0	0	0	0	0	0

NOTA: LAS MUESTRAS CONTABILIZADAS TIENEN UNA DURACION DE UNA HORA.

# CUADRO DE MANTENIMIENTOS PROGRAMADOS

SEMANA 20 DE 2012 - SEMANA 19 DE 2013

	PLANTA/UNIDAD	PROGRAMADO	DURACIÓN	REPROGRAMADO	DURACIÓN	EJECUTADO	DURACIÓN	MOTIVO			
CEL	<b>GUAJOYO</b>										
	UNIDAD 1	12-may-13	02-jun-13	22 DIAS	13-abr-13	04-may-13	22 DIAS	Mantenimiento mayor			
	<b>CERRON GRANDE</b>										
	UNIDAD 1	14-may-12	03-jun-12	21 DIAS			14-may-12	03-jun-12	21 DIAS	Mantenimiento mayor	
	UNIDAD 2	08-jun-12	29-jun-12	22 DIAS	09-jul-12	30-jul-12	22 DIAS	09-jul-12	20-jul-12	12 DIAS	Reemplazo de transformador elevador de Unidad
	<b>5 DE NOVIEMBRE</b>										
	UNIDAD 1	03-feb-13	22-feb-13	20 DIAS	31-ene-13	16-feb-13	17 DIAS			Mantenimiento mayor	
	UNIDAD 3	10-ene-13	26-ene-13	17 DIAS						Mantenimiento mayor	
	UNIDAD 4	01-abr-13	10-abr-13	10 DIAS						Mantenimiento mayor	
	<b>15 DE SEPTIEMBRE</b>										
UNIDAD 1	28-oct-12	14-may-13	199 DIAS	18-feb-13	27-feb-13	10 DIAS			Mantenimiento mayor - Reemplazo de cojinete de empuje del generador - Corrección de fuga de aceite del sistema de control y cambio de bujes de los		
UNIDAD 2	03-mar-13	23-mar-13	21 DIAS						Mantenimiento mayor - Reemplazo de cojinete de empuje del generador - Corrección de fuga de aceite del sistema de control y cambio de bujes de los		
LAGEO	<b>AHUACHAPAN</b>										
	UNIDAD 1	17-jun-12	14-jul-12	28 DIAS			17-jun-12	05-jul-12	19 DIAS	Mantenimiento mayor	
	UNIDAD 2	12-ago-12	26-ago-12	15 DIAS			12-ago-12	21-ago-12	10 DIAS	Mantenimiento mayor	
	<b>BERLIN</b>										
	UNIDAD 1	10-sep-12	30-sep-12	21 DIAS			10-sep-12	24-sep-12	15 DIAS	Mantenimiento mayor	
	UNIDAD 3	30-jul-12	28-ago-12	30 DIAS	14-oct-12	07-nov-12	25 DIAS	14-oct-12	09-nov-12	27 DIAS	Mantenimiento mayor
	UNIDAD 4	10-sep-12	30-sep-12	21 DIAS			10-sep-12	30-sep-12	21 DIAS	Mantenimiento mayor	
	DUKE ENERGY	<b>ACAJUTLA</b>									
		MOTOR 1	14-jul-12	04-ago-12	22 DIAS			14-jul-12	05-ago-12	23 DIAS	Mantenimiento de 72,000 horas
		MOTOR 3	25-ago-12	16-sep-12	23 DIAS			25-ago-12	17-sep-12	24 DIAS	Mantenimiento de 72,000 horas
MOTOR 7		05-oct-12	08-nov-12	35 DIAS			05-oct-12	08-nov-12	35 DIAS	Mantenimiento de 60,000 horas	
MOTOR 8		07-may-12	10-jun-12		35 DIAS		06-jun-12	11-jul-12	36 DIAS	Mantenimiento de 60,000 horas	
UNIDAD 1		07-jul-12	05-ago-12		30 DIAS		07-jul-12	05-ago-12	30 DIAS	Mantenimiento de 8,000 horas ó 2 años	
<b>SOYAPANGO</b>											
MOTOR 3		07-ago-12	31-ago-12	25 DIAS			07-ago-12	31-ago-12	25 DIAS	Mantenimiento de 24,000 horas	
<b>NEJAPA POWER</b>											
MOTOR 1		15-oct-12	11-nov-12	28 DIAS	05-nov-12	02-dic-12	28 DIAS	05-nov-12	30-nov-12	26 DIAS	Mantenimiento mayor de motor y generador
MOTOR 2	18-jun-12	01-jul-12	14 DIAS							Mantenimiento mayor de motor y generador	
MOTOR 5	23-ago-12	29-ago-12	7 DIAS	03-dic-12	09-dic-12	7 DIAS	03-dic-12	09-dic-12	7 DIAS	Mantenimiento intermedio de motor y generador	
MOTOR 6	06-ago-12	02-sep-12	28 DIAS				06-ago-12	31-ago-12	26 DIAS	Mantenimiento intermedio de motor y generador	
MOTOR 11	14-may-12	27-may-12	14 DIAS	18-jun-12	01-jul-12	14 DIAS	18-jun-12	29-jun-12	12 DIAS	Mantenimiento mayor de motor y generador	
MOTOR 12	24-sep-12	07-oct-12	14 DIAS	10-sep-12	23-sep-12	14 DIAS	10-sep-12	23-sep-12	14 DIAS	Mantenimiento mayor de motor y generador	
MOTOR 14	04-jun-12	10-jun-12	7 DIAS				04-jun-12	07-jun-12	4 DIAS	Mantenimiento intermedio de motor y generador	
MOTOR 23	10-sep-12	16-sep-12	7 DIAS	24-sep-12	30-sep-12	7 DIAS	24-sep-12	29-sep-12	6 DIAS	Mantenimiento intermedio de motor y generador	
MOTOR 25	09-jul-12	22-jul-12		14 DIAS			09-jul-12	22-jul-12	14 DIAS	Mantenimiento mayor de motor y generador	
INE	<b>TALNIQUE</b>										
	MOTOR 4	07-jul-12	21-jul-12	15 DIAS	11-ago-12	25-ago-12	15 DIAS	11-ago-12	26-ago-12	16 DIAS	Mantenimiento de 24,000 horas
	MOTOR 5	20-oct-12	03-nov-12	15 DIAS	07-jul-12	21-jul-12	15 DIAS	07-jul-12	22-jul-12	16 DIAS	Mantenimiento de 24,000 horas
	MOTOR 6	24-nov-12	08-dic-12	15 DIAS	05-ene-13	19-ene-13	15 DIAS				Mantenimiento de 24,000 horas
	MOTOR 7	11-ago-12	25-ago-12	15 DIAS	22-ene-13	05-feb-13	15 DIAS				Mantenimiento de 24,000 horas
	MOTOR 8	15-sep-12	29-sep-12	15 DIAS	24-nov-12	08-dic-12	15 DIAS	24-nov-12	08-dic-12	15 DIAS	Mantenimiento de 24,000 horas
	MOTOR 9	02-jun-12	16-jun-12	15 DIAS	15-sep-12	29-sep-12	15 DIAS	15-sep-12	30-sep-12	16 DIAS	Mantenimiento de 24,000 horas
	<b>TEXTUFIL</b>										
	MOTOR 1	01-oct-12	08-oct-12	8 DIAS				01-oct-12	06-oct-12	6 DIAS	Mantenimiento de 7,500 horas
	MOTOR 2	17-sep-12	24-sep-12	8 DIAS	11-oct-12	18-oct-12	8 DIAS	11-oct-12	17-oct-12	7 DIAS	Mantenimiento de 7,500 horas
MOTOR 3	02-jun-12	11-jun-12	10 DIAS				02-jun-12	08-jun-12	7 DIAS	Mantenimiento de 30,000 horas	
MOTOR 4	22-oct-12	31-oct-12	10 DIAS				22-oct-12	30-oct-12	9 DIAS	Mantenimiento de 7,500 horas	
MOTOR 5	23-jul-12	01-ago-12	10 DIAS							Mantenimiento de 15,000 horas	
MOTOR 6	13-jul-12	22-jul-12		10 DIAS			13-jul-12	19-jul-12	7 DIAS	Mantenimiento de 7,500 horas	
	11-ago-12	13-ago-12		3 DIAS						Mantenimiento de 3,750 horas	
MOTOR 7	14-may-12	23-may-12	10 DIAS	18-jun-12	27-jun-12	10 DIAS				Mantenimiento de 7,500 horas	
	21-ago-12	23-ago-12		3 DIAS						Mantenimiento de 3,750 horas	
GECSA	<b>GECSA</b>										
	MOTORES 1 a 3	30-jul-12	13-ago-12	15 DIAS	01-sep-12	15-sep-12	15 DIAS	01-sep-12	08-sep-12	8 DIAS	Cambio de empaquetadura en el transformador de potencia
BOREALIS	<b>BOREALIS</b>										
	MOTOR 1	10-oct-12	24-oct-12	15 DIAS						Mantenimiento de 6,000 horas	
	MOTOR 3	11-jul-12	25-jul-12	15 DIAS	10-oct-12	24-oct-12	15 DIAS	10-oct-12	25-oct-12	16 DIAS	Mantenimiento de 6,000 horas
	MOTOR 8	15-ago-12	29-ago-12				15 DIAS			Mantenimiento de 6,000 horas	

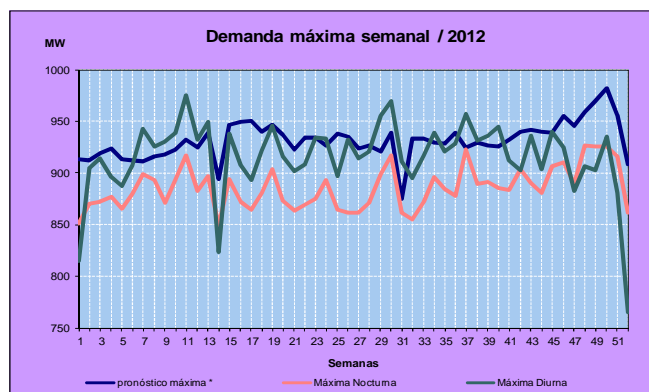
XV- Demanda máxima coincidental por recurso

Cuadro No. 22

Demanda máxima coincidental por recurso												
RECURSO	Ene	Feb	Mar	Abr	May	Jun	Jul	Ago	Sep	Oct	Nov	Dic
DIA DEL MES	14:30	14:30	15:00	15:00	11:30	11:30	11:30	14:00	14:00	13:30	11:30	11:30
	Martes	Martes	Miércoles	Miércoles	Lunes	Viernes	Viernes	Miércoles	Miércoles	Miércoles	Martes	Martes
GUAJOYO	16	18	15	15	12	0	13	11	16	0	18	17
HOLCIM	7	1	6	6	9	10	0	0	0	0	0	0
CERRON GRANDE	80	155	145	142	136	135	71	149	168	163	160	84
5 DE NOVIEMBRE	93	75	68	60	85	84	83	66	78	90	83	71
15 DE SEPTIEMBRE	84	78	132	129	180	141	122	182	182	182	140	127
AHUACHAPAN	76	75	77	75	73	72	74	72	73	73	74	76
BERLIN	97	94	95	95	92	92	100	97	66	97	59	100
ACAJUTLA	99	120	97	107	90	124	155	118	108	131	111	88
SOYAPANGO	15	9	9	9	9	5	10	0	10	10	10	10
NEJAPA POWER	133	132	121	125	128	134	133	119	106	111	119	139
CASSA	27	29	26	27	21	0	0	0	0	0	10	22
TEXTUFIL	24	34	33	26	34	27	24	40	37	37	38	39
TALNIQUE	98	89	93	92	79	87	77	76	93	80	86	97
GECSA	11	0	10	11	0	11	11	0	0	0	0	0
BOREALIS	0	0	12	8	0	12	12	0	0	0	0	0
HILCASA	6	0	6	6	6	6	6	0	6	0	0	0
INGENIO EL ANGEL	10	10	21	5	0	0	0	0	0	0	0	18
INGENIO LA CABAÑA	4	3	4	5	0	0	0	0	0	0	4	4
INGENIO CHAPARRASTIQUE	4	5	5	4	0	0	0	0	0	0	1	4
IMPORTACION NETA(*)	29	17	1	0	0	1	78	8	14	0	27	46
EXPORTACION NETA (*)	0	0	0	9	9	0	0	0	0	30	0	0
<b>DEMANDA NACIONAL</b>	<b>914</b>	<b>943</b>	<b>975</b>	<b>938</b>	<b>945</b>	<b>941</b>	<b>969</b>	<b>938</b>	<b>957</b>	<b>944</b>	<b>940</b>	<b>942</b>

(\*) Nota: El número positivo corresponde a importación, y un número negativo a exportación.

Gráfico No. 11



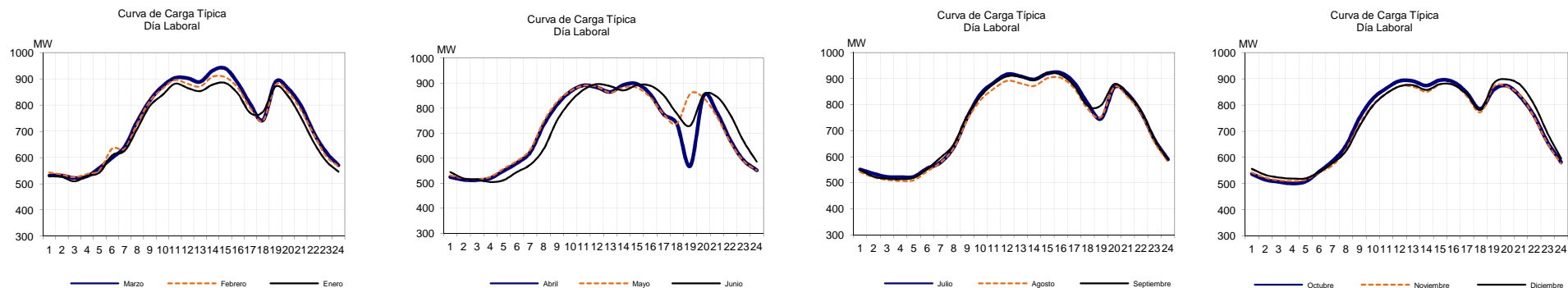
XVI- Curvas típicas de carga

Día Laboral

Cuadro No. 23  
Curvas típicas de carga (MW)

HORA	Enero	Febrero	Marzo	Abril	Mayo	Junio	Julio	Agosto	Septiembre	Octubre	Noviembre	Diciembre
1	529	543	532	525	531	544	551	541	548	537	542	556
2	526	535	532	514	518	519	535	521	523	515	523	533
3	509	525	522	513	515	514	523	511	515	507	513	523
4	529	537	529	520	525	505	522	507	513	501	510	519
5	543	552	561	550	558	512	523	510	519	508	515	520
6	608	634	600	581	589	545	555	544	553	545	543	544
7	626	634	642	624	634	574	578	578	596	586	570	578
8	711	730	740	733	746	636	637	634	648	644	631	624
9	797	815	818	813	825	750	751	742	758	750	728	719
10	839	862	872	866	868	825	841	818	832	824	802	798
11	882	895	904	891	890	874	885	862	881	863	845	844
12	865	881	903	883	886	896	917	892	909	892	872	872
13	853	871	889	865	862	888	909	882	907	891	870	876
14	878	908	932	893	883	871	897	872	894	874	851	858
15	885	906	940	897	882	892	920	902	922	895	879	880
16	844	865	884	856	844	890	922	903	914	888	878	877
17	769	787	804	776	776	852	884	863	872	846	833	840
18	775	741	743	737	738	778	805	784	795	785	773	782
19	871	878	889	569	857	730	746	753	797	858	871	884
20	834	849	863	848	841	851	867	868	879	873	870	898
21	754	782	800	783	767	846	840	830	839	830	834	875
22	660	691	699	673	665	775	770	767	775	759	753	801
23	588	606	622	592	589	669	665	656	667	658	652	691
24	546	566	571	552	551	586	590	582	588	582	576	595

Gráfico No. 12



XVI- Curvas típicas de carga

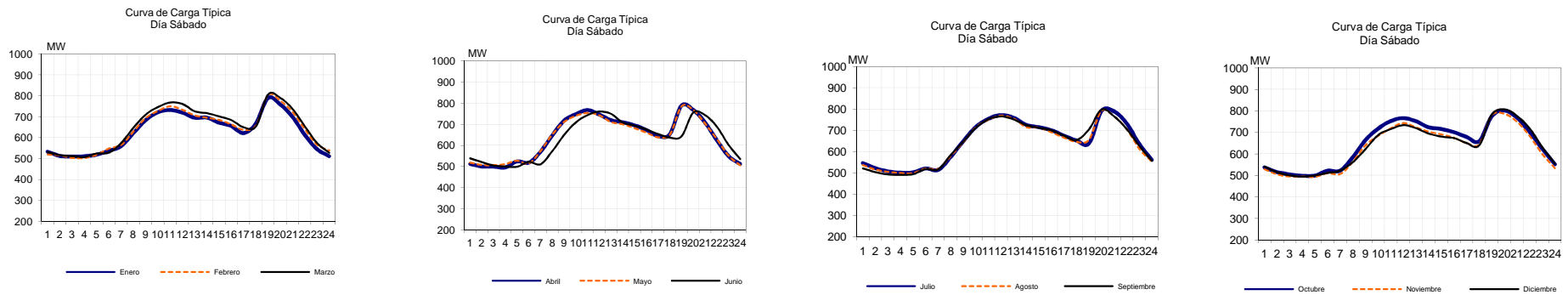
Día Sábado

Cuadro No. 24

Curvas típicas de carga (MW)

HORA	Enero	Febrero	Marzo	Abril	Mayo	Junio	Julio	Agosto	Septiembre	Octubre	Noviembre	Diciembre
1	533	521	532	512	519	539	547	537	522	537	528	541
2	513	516	517	500	508	521	523	516	505	515	504	515
3	510	504	513	499	507	505	508	506	494	504	494	500
4	511	503	508	496	512	500	502	500	492	498	495	495
5	519	519	525	524	528	499	503	500	495	499	493	500
6	538	549	529	518	515	522	522	521	519	522	510	512
7	560	566	575	570	574	511	515	520	518	522	506	523
8	621	629	647	648	652	573	576	580	585	585	564	562
9	684	693	710	717	711	649	650	645	648	664	640	623
10	721	727	746	748	740	708	717	715	713	718	683	688
11	732	750	768	767	754	743	755	750	753	753	719	716
12	720	733	761	746	743	760	772	769	766	767	743	734
13	695	707	726	719	711	749	760	755	752	752	723	720
14	696	696	717	709	700	708	726	715	725	724	703	695
15	672	685	702	695	682	694	715	713	713	716	690	681
16	656	664	684	673	661	675	701	691	701	701	675	674
17	622	638	650	644	639	654	676	666	676	679	650	651
18	667	657	653	652	651	637	653	646	655	659	644	640
19	790	804	806	788	785	643	640	656	705	776	779	783
20	760	776	790	768	768	755	792	792	798	802	786	808
21	700	722	737	709	704	743	789	765	766	768	749	777
22	614	641	655	626	631	689	732	707	707	701	683	719
23	546	567	575	550	552	603	636	614	628	623	599	632
24	512	540	528	512	506	535	562	554	558	551	533	555

Gráfico No. 13



XVI- Curvas típicas de carga

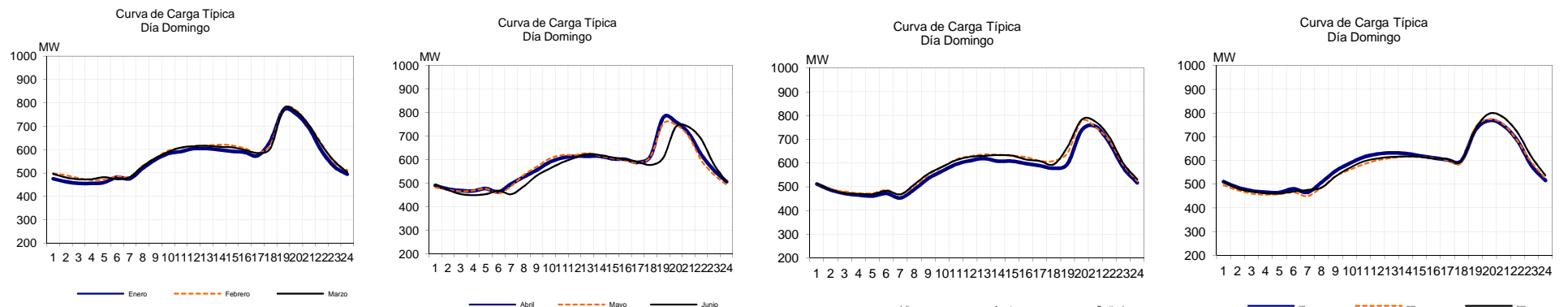
Día Domingo

Cuadro No. 25

Curvas típicas de carga (MW)

HORA	Enero	Febrero	Marzo	Abril	Mayo	Junio	Julio	Agosto	Septiembre	Octubre	Noviembre	Diciembre
1	475	499	497	491	482	495	512	511	512	510	496	513
2	462	491	481	476	473	472	487	489	488	486	475	481
3	455	478	474	469	466	454	472	479	473	472	461	468
4	455	470	474	468	469	450	465	472	470	466	456	461
5	459	472	483	478	477	454	461	472	469	465	458	460
6	482	486	474	464	457	469	472	486	483	480	466	469
7	476	484	483	498	488	454	453	466	468	465	450	475
8	519	531	529	528	536	488	489	504	510	507	487	485
9	556	564	564	556	570	532	535	550	555	555	534	532
10	583	596	591	589	604	562	566	583	584	587	560	568
11	591	608	609	608	620	588	595	615	612	614	584	595
12	604	616	615	615	620	608	610	629	626	627	601	608
13	604	617	617	615	628	624	619	636	630	632	611	614
14	599	622	612	615	616	620	608	635	633	629	616	616
15	593	618	610	604	606	610	608	630	631	620	615	615
16	588	606	599	602	597	601	598	625	615	611	611	608
17	574	586	586	589	587	591	589	609	608	602	601	605
18	638	623	607	616	614	578	578	609	594	599	591	596
19	768	775	775	779	753	608	597	644	669	728	740	733
20	752	769	764	760	748	740	737	777	782	769	774	797
21	692	705	706	712	700	739	755	751	774	747	753	781
22	594	624	620	622	598	688	685	693	708	683	684	718
23	526	543	550	556	537	581	581	591	598	578	593	615
24	494	512	504	507	494	506	517	523	531	515	525	537

Gráfico No. 14



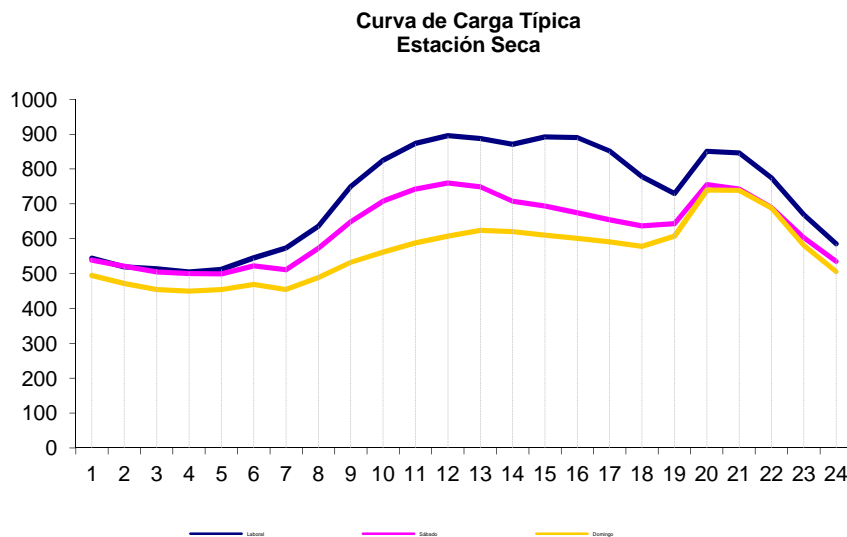
XVI- Curvas típicas de carga estación seca

Cuadro No. 26

Hora	Laboral	Sábado	Domingo
1	544	539	495
2	519	521	472
3	514	505	454
4	505	500	450
5	512	499	454
6	545	522	469
7	574	511	454
8	636	573	488
9	750	649	532
10	825	708	562
11	874	743	588
12	896	760	608
13	888	749	624
14	871	708	620
15	892	694	610
16	890	675	601
17	852	654	591
18	778	637	578
19	730	643	608
20	851	755	740
21	846	743	739
22	775	689	688
23	669	603	581
24	586	535	506

Nota: corresponde al mes de Junio 2012

Gráfico No. 15





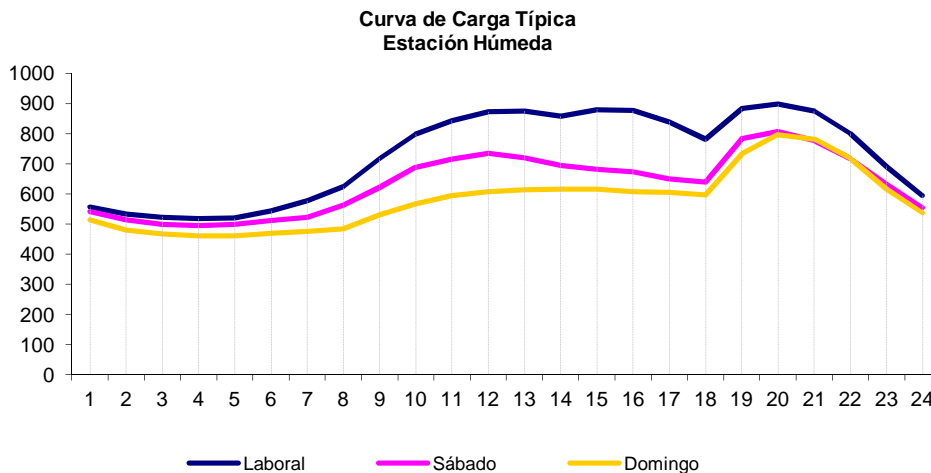
XVI- Curvas típicas de carga estación húmeda

Cuadro No. 27

Hora	Laboral	Sábado	Domingo
1	556	541	513
2	533	515	481
3	523	500	468
4	519	495	461
5	520	500	460
6	544	512	469
7	578	523	475
8	624	562	485
9	719	623	532
10	798	688	568
11	844	716	595
12	872	734	608
13	876	720	614
14	858	695	616
15	880	681	615
16	877	674	608
17	840	651	605
18	782	640	596
19	884	783	733
20	898	808	797
21	875	777	781
22	801	719	718
23	691	632	615
24	595	555	537

Nota: corresponde al período diciembre-2012

Gráfico No. 16



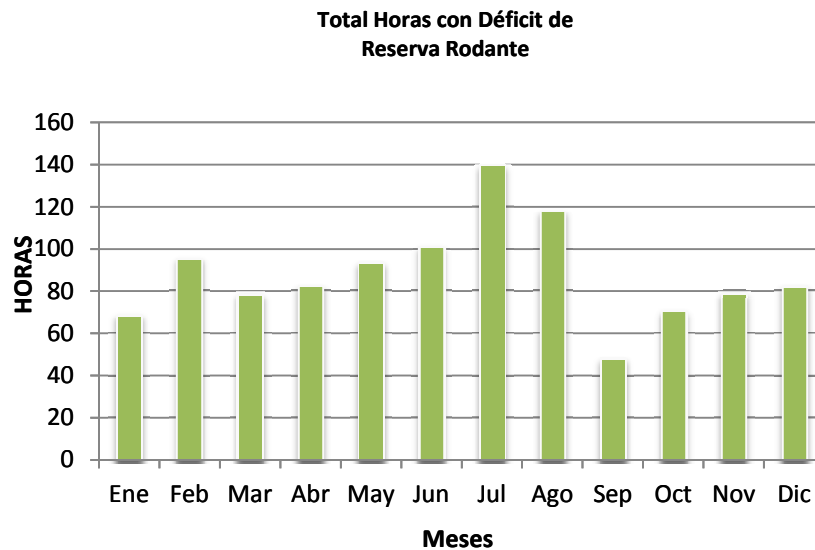
## XVII - Déficit de Reserva de Potencia

Cuadro No. 28

Mes	Total de horas con deficit de reserva (*)	Promedio de reserva	Margen Reserva Mínima Alcanzada
Ene	68.5	5.4%	3.4%
Feb	95.5	5.4%	3.9%
Mar	78.3	5.4%	4.2%
Abr	82.3	5.5%	3.8%
May	93.2	5.5%	4.0%
Jun	101	5.5%	4.0%
Jul	139.5	5.5%	3.6%
Ago	117.7	5.5%	3.8%
Sep	47.8	5.4%	4.1%
Oct	70.2	5.6%	4.6%
Nov	78.7	5.6%	3.9%
Dic	82.2	5.5%	4.1%
<b>TOTAL</b>	<b>1054.9</b>		

NOTA: EL REQUERIMIENTO MINIMO DE RESERVA RODANTE ES EL 7% DE LA DEMANDA  
 (\*) LAS MUESTRAS QUE HAN SIDO CONTABILIZADAS TIENEN UNA DURACIÓN DE MEDIA HORA  
 LA MAYORIA DE LAS VIOLACIONES SON DEBIDAS A DEFICIT DE RESERVA POR ENTRADAS  
 Y SALIDAS DE MAQUINAS.

Gráfico No. 17



## XVIII - Monto de Servicios Auxiliares

Cuadro No. 29

Meses	Reactivo en Bancos	Control Automático de Generación	Arranque en cero voltaje	Reserva Fría por confiabilidad	Total
<b>Enero</b>	\$10,291.13	\$1,169,000.61	\$4,571.42	\$0.00	\$1,183,863.15
<b>Febrero</b>	\$6,136.53	\$1,025,220.73	\$4,571.42	\$0.00	\$1,035,928.67
<b>Marzo</b>	\$4,046.76	\$997,080.84	\$4,571.42	\$0.00	\$1,005,699.02
<b>Abril</b>	\$3,345.18	\$1,281,682.05	\$4,571.42	\$0.00	\$1,289,598.64
<b>Mayo</b>	\$3,584.54	\$1,367,058.44	\$4,571.42	\$0.00	\$1,375,214.39
<b>Junio</b>	\$3,134.45	\$1,511,728.02	\$4,571.41	\$0.00	\$1,519,433.89
<b>Julio</b>	\$3,873.50	\$1,072,556.31	\$4,571.42	\$0.00	\$1,081,001.23
<b>Agosto</b>	\$2,430.18	\$1,097,125.49	\$4,571.42	\$0.00	\$1,104,127.09
<b>Septiembre</b>	\$6,109.30	\$1,796,264.08	\$4,571.42	\$0.00	\$1,806,944.80
<b>Octubre</b>	\$6,023.54	\$1,539,853.73	\$4,571.42	\$0.00	\$1,550,448.68
<b>Noviembre</b>	\$2,754.74	\$508,722.76	\$4,571.42	\$0.00	\$516,048.92
<b>Diciembre</b>	\$2,435.58	\$558,431.71	\$4,571.42	\$0.00	\$565,438.70
<b>TOTAL</b>	<b>\$54,165.42</b>	<b>\$13,924,724.76</b>	<b>\$54,857.00</b>	<b>\$0.00</b>	<b>\$14,033,747.18</b>

## XVIII- Cargos por Operación del Sistema

Cuadro No. 30

Meses	CAREN <sup>1/</sup>	CARTRA	CUST <sup>2/</sup>	TOTAL
<b>Enero</b>	\$305,656.29	\$16,087.17	\$2,434,271.18	\$2,756,014.64
<b>Febrero</b>	\$305,656.29	\$16,087.17	\$2,415,279.77	\$2,737,023.23
<b>Marzo</b>	\$305,656.29	\$16,087.17	\$2,642,871.27	\$2,964,614.73
<b>Abril</b>	\$305,656.29	\$16,087.17	\$2,414,754.62	\$2,736,498.08
<b>Mayo</b>	\$305,656.29	\$16,087.17	\$2,569,568.66	\$2,891,312.12
<b>Junio</b>	\$305,656.29	\$16,087.17	\$2,446,720.09	\$2,768,463.55
<b>Julio</b>	\$305,656.29	\$16,087.17	\$2,541,826.27	\$2,863,569.73
<b>Agosto</b>	\$305,656.29	\$16,087.17	\$2,488,491.78	\$2,810,235.24
<b>Septiembre</b>	\$305,656.29	\$16,087.17	\$2,496,413.72	\$2,818,157.18
<b>Octubre</b>	\$305,656.29	\$16,087.17	\$2,616,143.32	\$2,937,886.78
<b>Noviembre</b>	\$305,656.29	\$16,087.17	\$2,422,976.71	\$2,744,720.17
<b>Diciembre</b>	\$305,656.29	\$16,087.17	\$2,432,200.13	\$2,753,943.59
<b>TOTAL</b>	<b>\$3,667,875.48</b>	<b>\$193,046.04</b>	<b>\$29,921,517.52</b>	<b>\$33,782,439.04</b>

<sup>1/</sup> Valores sin IVA<sup>2/</sup> Información proporcionada por la Empresa Transmisora de El Salvador, S.A. de C.V.

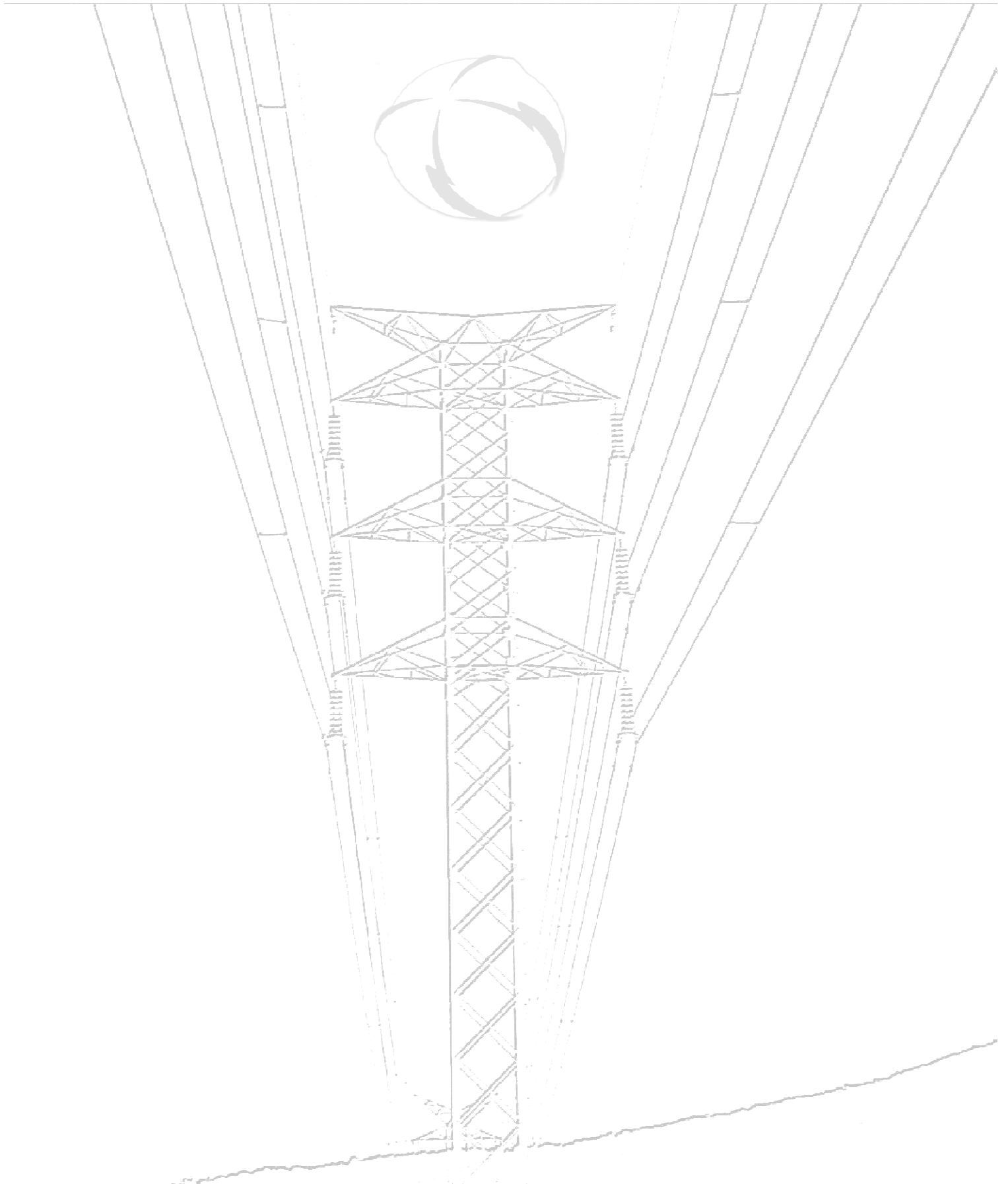
## XIV - Cargos del Sistema (sistema de costos)

Cuadro No. 31

Meses	SIGET	UT	CUST	FLDDP	FLEMG	PTRANSMIS
<b>Enero</b>	\$266,357.92	\$152,828.13	\$2,434,271.18	\$650,444.62	\$0.00	\$1,565,754.61
<b>Febrero</b>	\$264,279.88	\$152,828.14	\$2,415,279.74	\$445,483.71	\$0.00	\$1,268,373.17
<b>Marzo</b>	\$286,500.19	\$152,828.17	\$2,642,211.35	\$3,162.19	\$0.00	\$1,463,472.34
<b>Abril</b>	\$261,908.16	\$152,828.15	\$2,415,414.56	\$77,611.92	\$0.00	\$1,342,661.94
<b>Mayo</b>	\$278,623.39	\$152,828.03	\$2,569,568.66	\$68,163.25	\$0.00	\$1,454,708.45
<b>Junio</b>	\$265,302.69	\$152,828.15	\$2,446,720.12	\$65,425.09	\$0.00	\$1,259,593.24
<b>Julio</b>	\$275,615.23	\$152,828.13	\$2,541,826.25	\$72,985.11	\$0.00	\$1,574,496.77
<b>Agosto</b>	\$269,832.07	\$152,828.16	\$2,488,491.79	\$136,442.88	\$0.00	\$1,305,637.99
<b>Septiembre</b>	\$270,691.07	\$152,828.17	\$2,496,413.78	\$30,137.48	\$0.00	\$1,263,118.69
<b>Octubre</b>	\$283,673.58	\$152,828.11	\$2,616,143.33	\$518.20	\$0.00	\$1,258,230.83
<b>Noviembre</b>	\$262,728.14	\$152,828.17	\$2,422,976.75	\$19,246.93	\$0.00	\$1,145,198.28
<b>Diciembre</b>	\$263,728.25	\$152,828.16	\$2,432,200.13	\$26,558.49	\$0.00	\$1,096,544.61
<b>TOTAL</b>	<b>\$3,249,240.57</b>	<b>\$1,833,937.67</b>	<b>\$29,921,517.65</b>	<b>\$1,596,179.87</b>	<b>\$0.00</b>	<b>\$15,997,790.93</b>

Meses	REACTIVOS	ACVOLTAJE	COMP_EFI	RFC	CCT	TOTAL
<b>Enero</b>	\$10,291.13	\$4,571.42	\$171,657.14	\$0.00	\$1,227,035.19	\$6,483,211.34
<b>Febrero</b>	\$6,136.53	\$4,571.42	\$51,397.44	\$0.00	\$1,222,163.29	\$5,830,513.29
<b>Marzo</b>	\$4,046.76	\$4,571.42	\$107,971.63	\$0.00	\$739,358.10	\$5,404,122.14
<b>Abril</b>	\$3,345.18	\$4,571.42	\$116,443.73	\$0.00	\$752,360.27	\$5,127,145.33
<b>Mayo</b>	\$3,584.54	\$4,571.42	\$378,986.80	\$0.00	\$744,820.34	\$5,655,854.88
<b>Junio</b>	\$3,134.45	\$4,571.41	\$129,105.10	\$0.00	\$732,377.67	\$5,059,057.93
<b>Julio</b>	\$3,873.50	\$4,571.42	\$730,661.74	\$0.00	\$739,750.21	\$6,096,608.35
<b>Agosto</b>	\$2,430.18	\$4,571.42	\$241,564.89	\$0.00	\$740,331.80	\$5,342,131.18
<b>Septiembre</b>	\$6,109.30	\$4,571.42	\$234,279.96	\$0.00	\$744,071.36	\$5,202,221.22
<b>Octubre</b>	\$6,023.54	\$4,571.42	\$821,334.43	\$0.00	\$737,700.83	\$5,881,024.27
<b>Noviembre</b>	\$2,754.74	\$4,571.42	\$244,818.91	\$0.00	\$743,127.14	\$4,998,250.48
<b>Diciembre</b>	\$2,435.58	\$4,571.42	\$117,089.23	\$0.00	\$1,272,378.95	\$5,368,334.83
<b>TOTAL</b>	<b>\$54,165.42</b>	<b>\$54,857.00</b>	<b>\$3,345,310.98</b>	<b>\$0.00</b>	<b>\$10,395,475.15</b>	<b>\$66,448,475.24</b>

<sup>1/</sup> Valores calculados según el ROBCP.



Administradora del Mercado Mayorista de Energía Eléctrica de El Salvador  
Km 12 ½ carretera al Puerto de La Libertad, Nuevo Cuscatlán, Departamento de La Libertad, El Salvador, Centroamérica  
Tel. 2521-7300  
Fax. 2521-7301

Correo: [mercado@ut.com.sv](mailto:mercado@ut.com.sv) [mail@ut.com.sv](mailto:mail@ut.com.sv) [www.ut.com.sv](http://www.ut.com.sv)